

Welcome to our latest edition

WHAT'S INSIDE

We've reached double figures! This is the tenth edition of Edwinstowe Village News. When the Parish Council launched the magazine, it was a leap of faith. We didn't know whether it would be a success, or whether we could attract the adverts to support it and make it viable. In fact it's proved to be a resounding success.

Not only do we try to keep you up to date with what's happening in the village, but it's an opportunity for community groups, clubs and schools to promote themselves and for businesses to advertise themselves.

Sadly, as you'll see from the tribute inside, Alan who designed and printed the first nine issues sadly passed away recently. He is greatly missed. We are grateful his friend and business partner, Craig Mariner (who many will know runs the barber's shop) and has taken up the task of printing this and our thanks to him. Inside this issue you will find news about the Christmas Lights event date, information about the recent Parish Poll and the petition to bring the Robin Hood railway line to Edwinstowe.

Thanks also to the editorial team who have produced the first ten issues, Cllr. John Peck, Cllr. Josie Cocking, Robin Woodhead and Alice Dunn. We look forward to producing the next ten!

Edwinstowe Christmas

Edwinstowe Parish Council
Working to make a difference

Meet Santa
Balloon Modellers
Stilt Walkers
Punch & Judy

Fairground Ride
Candy Floss
Games
Craft Stalls

Live Music & Magician
Brass Band
Dutch Organ
Fire Engine

Plus: Library open for children's activities
live music and mince pies

New This Year

Activities & Festive Fun in the
BARGAIN BOOZE courtyard
& **CHURCH FARM WORKSHOPS**
(behind the village hall)

Thursday 27th November 4:30pm - 7pm

A.W. LYMN

The Family Funeral Service

OLLERTON

Manvers House, Sherwood Drive NG22 9PP

01623 860 045



David Summers
Dip. F.D., M.B.I.F.D.

The Ollerton office of A W Lymn The Family Funeral Service was opened in April 2011, under the management of David Summers.

David became a Funeral Director later in life, and is reputed to have become the oldest person ever to gain a Diploma in Funeral Directing from the National Association of Funeral Directors.

His age does not hold him back though, and when not at work he is committed to improving his local area.

His kettle is always on, so please feel free to pop in if you have any queries or questions.

MANSFIELD

Standard House
16 Chesterfield Road South
01623 622 116

MANSFIELD WOODHOUSE

The Old Farm
2 Welbeck Road
01623 623 765

SHIREBROOK

Shirebrook Funeral Service
32-34 Patchwork Row
01623 742 813

SUTTON-IN-ASHFIELD

Station House,
82 Station Rd
01623 980 080

www.lymn.co.uk

"Our family serving your family"



THANK YOU

The Forestry Commission are continually striving to improve the woodlands local to you, but we can always do with an extra hand now and again. To maintain the busy woodlands for both people and wildlife, our Rangers work with a great team of volunteers scrub clearing, removing invasive plants and burning off the

brush. Volunteering is a great way to gain new skills, get out and about in the great outdoors, be more physically active or just meet new people.

Whether you might be interested in practical conservation, building and maintaining bike trails or carrying out wildlife surveys we have a whole range of opportunities at

www.forestry.gov.uk/england-volunteer
WHY NOT LOOK US UP AND SEE WHAT WE DO

Members of the Evergreen Club would like to thank residents of Lynds Close for their patience and understanding while they were temporarily meeting at their centre during the closure of the Abbey Road Centre, which was having a new kitchen fitted.

The Evergreen Club are now back home at the Abbey Road Centre, and if you would like some company, pop along and you will receive a warm & friendly welcome. Please ring 825808 for more information.

New information boards for Edwinstowe Village Trail

FROM LEFT --

CELIA BROOKS (CHAIR OF EDWINSTOWE PARISH COUNCIL)

PATRICK CANDLER (SHERWOOD FOREST TRUST)

MARGARET WOODHEAD (EDWINSTOWE HISTORICAL SOCIETY)

COUN JOHN PECK (LOCAL MEMBER, NOTTINGHAMSHIRE COUNTY COUNCIL)

VISITORS to Edwinstowe can find their way around the village more easily now – and learn more about its history – thanks to a major revamp of seven information boards. The seven boards that make up the Edwinstowe Village Trail have been re-vamped by the Parish Council with funding from Nottinghamshire County Council's Supporting Local Communities Fund.

The Edwinstowe Historical Society provided the photographs and helped with the wording. Information was also supplied by Sherwood Forest Trust. The trail delves into the history of the village and encourages people to visit the nearby Sherwood Forest Country Park to explore the surrounding local area.

As well as the trail, new banners have been designed to go on the lampposts along the High Street. The banners represent Edwinstowe past and present with a modern take on medieval colours and design. "The new boards were installed in time for this year's Robin Hood Festival which was held in Sherwood Forest," said Coun John Peck, local County Councillor for the area.

"The Festival attracts visitors from around the world so the new boards will have been a real boom for people new to the area."

Celia Brooks, Chairman of Edwinstowe Parish Council, said: "We are absolutely delighted with the new boards. They are very informative and we hope that people will take note of them and be drawn on to the next one and so on, thereby learning more about our village."



Bring the Robin Hood Line to Edwinstowe- sign the petition!



Edwinstowe Parish Council has launched a petition calling on the County Council to do everything possible to extend the Robin Hood Line to Edwinstowe and Ollerton. You will find the petition sheets in businesses on the High Street. Please sign

up if you support the campaign. Also, you might consider helping the campaign by collecting signatures from friends, family and neighbours. Please call in the Parish Office, or ring 824243, or email edwinstowe.pc@btconnect.com

Edwinstowe's County Councillor, John Peck proposed the petition at the October Parish Council meeting and got support from all the councillors present.

Local M.P., Mark Spencer and his opponent at next year's general election, Leonie Mathers, have both publically stated their support for the extension of the line. The Parish Council believes the opening up of the line to Edwinstowe and Ollerton would be of great economic benefit to the area. John says: "a petition will help to keep the pressure on. Let's turn the dream into a reality. We have a working railway line, which wouldn't need much upgrading and Edwinstowe station is still in surprisingly good condition. I know finance is difficult at the moment, but if we don't push for it now with Thoresby Colliery closing, we might lose the opportunity."

Sport England Award for St Marys CE Primary School:

Congratulations to St Marys CE Primary School who have recently been awarded the Sainsburys School Games Silver award for the 2014/2015 academic year. The report, carried out by The Sport Industry Research Centre at Sheffield Hallam University, confirmed that St Marys "clearly embeds the schools games programme and values the impact that sport and competition can have on pupils in the school". St Marys' met or exceeded the required criteria in all areas to achieve the Silver School Games Mark – narrowly missing out on the gold award and being one of only a few primary schools ever to achieve the Silver award.

All pupils in school are provided with two hours of timetabled PE & sports per week lead by a full time sports coach who oversees the PE & Sports curriculum. The school takes part in a wide variety of activities that include: football, netball, hockey, rugby, rounders, table tennis, cricket, orienteering, athletics, cross-country, boccia, dodgeball, gymnastics, dance and swimming – for some of these the school takes part in festivals and competes with other schools from within the local area. Furthermore, 52% of their pupils are engaged in extra-curricular sporting activity on an average week and the school offers talented young sports people specific support to help them develop their sporting potential. They are also committed to introducing their pupils to other sporting experiences such as yoga, T'ai Chi, golf, Taekwondo, archery, baseball, and hopefully in the future... climbing!

The Head teacher Mrs. Monks quoted "It's the schools constant involvement and focus on PE and sport, underpinned by high-quality teaching which increases participation levels and leads to healthier pupils who are more engaged across the whole curriculum. St Mary's will continue to build on their existing practices, continue to provide new and different activities to encourage those pupils who are not currently engaged in competitive sport and provide an appropriate pathway for all pupils to achieve their full potential".

If you would like to find out more about what St Mary's has to offer your child, please take a look at their website at: www.st-maryscofe.notts.sch.uk

BEND ON EAST LANE - new warning signs

In a previous magazine, we informed readers the Parish Council had their request for a one way system for the bottom end of East Lane turned down by the Highways Department. However, Edwinstowe's County Councillor, John Peck, has managed to get Highways to put up warning signs at each end of the bend, warning about oncoming traffic in the middle of the road. Local residents always take great care negotiating the bend as parked vehicles often make the bend hazardous. However, the new warning signs may help to alert visitors who may not know the dangers of that particular road.

Peter Borrowdale

P&A Masonry Services

3 Croft Farm Close,
Everton, Doncaster,
South Yorkshire, DN10 5DJ

MEMORIAL SPECIALISTS

Tel 01777 949029 . Mobile 07890589147
E-mail: peterborrowdale@yahoo.co.uk

A family business for over 110 years
Memorials-Lettering-Renovations

A true community spirit was celebrated at Edwinstowe Parish Church on Sunday 31st August when the new Standard of The Edwinstowe sub-branch of The Royal British Legion was dedicated.

The picture shows the new Standard ready to be presented to Rev'd Holliday for it to be dedicated.

Local resident and member Dot Mellors set out to raise the £700 required to purchase the new Standard, this was raised in a very short time by donations from individuals as well as local councillors. Many people have also supported the branch by attending a coffee morning as well as making cakes and items to sell at the coffee morning and providing cakes for the refreshments following the dedication.

Curate Louise Holliday led the service which was attended by the Chairman of the County Council, Councillor Pauline Allan, The Chairman of Newark and Sherwood District Council, Councillor Rita Crowe. Members of both the Royal British Legion Nottinghamshire County office and from Warsop, Meden Vale and District Branch took part in the service to support their Edwinstowe colleagues.

The thanks of all branch members, go to all who have supported in any way towards this project and to those who attended the wonderful service. Edwinstowe Sub is hoping to return to full branch status by the end of this year and would welcome any new members, you do not have to be ex-service to join.

FOR FURTHER DETAILS CONTACT PHIL JONES ON 01623 824787

NEW STANDARD OF THE ROYAL BRITISH LEGION

is Dedicated at Edwinstowe Parish Church



The picture shows the furled new Standard ready to be presented to Rev'd Holliday for it to be dedicated.

LANGMEAD

HEATING

ADVICE

DESIGN

INSTALLATION

MAINTENANCE

Langmead Heating is a local business that specialises in gas central heating. We supply, install, service and repair a wide variety of boilers and heating systems (not just combination boilers). We have done a vast amount of work locally, with a vast amount of satisfied customers. We have experience in fault finding on heating systems where others fail. We are fully insured and fully qualified with the philosophy of 'do it how you'd like it in your own home'. Langmead Heating is a GAS SAFE REGISTERED company and the number is 513290 if you would like to research it for peace of mind. The following is just a brief insight into what we do for more information; contact us on the details below.

Boilers, fires, cookers, unvented cylinders, radiators, fault finding, full heating systems, heating upgrades, power flushing (from £200), servicing, landlord safety checks, all general plumbing and drainage.



Liam Tebbett

2 Old Station Yard, Occupation Lane,
Edwinstowe, Mansfield, Notts

07814915978

As an employee or company pensioner, did you know that HMRC are now told about every wages or pension payment immediately you receive it?

From September 2014, HMRC will share this information with the DWP and local authorities to identify anyone receiving too much benefit because they haven't reported increases in their income. This includes Housing Benefit claimants.

Whenever you receive a letter from the DWP or local authority with a calculation of your benefit (including Housing Benefit), it is advisable to

check that the details of all your income and any other personal details are correct. If the details are wrong, you should contact the DWP/local authority now with the correct income and other information. This may avoid large penalties and will ensure that any possible overpayments do not increase. Changes in your earnings, pensions or other income should always be declared immediately to the DWP and local authority if it could affect the benefit(s) you receive.



Worried about a possible overpayment of benefit?
- your local **Citizens Advice Bureau** can provide confidential advice.

NEW OLLERTON (5 Forest Court) NG22 9PL

MONDAY, WEDNESDAY & FRIDAY: 9.30 AM - 2.30 PM

NEWARK (Keepers Cottage, Riverside Park, Great North Road)
NG24 1BL

TUESDAY & THURSDAY: 9.30 AM - 2.30 PM

Or contact: North Notts Advice Line
(0844) 856 3411 or (0300) 456 8369 from a mobile
Monday to Friday 10.00am - 2.00pm

OUTREACH SERVICE OPENING HOURS:

Monday: Bilsthorpe (The Surgery, 35 Mickledale Lane) 9:30am-12:30pm
Tuesday: Clipstone (The Health Centre, First Avenue) 10:00am-12:30pm
Friday: Southwell (The Old Court House, Burgage) 10:00am-12:30pm

For information on the above or advice on any subject...

Visit your local
CITIZENS ADVICE BUREAU





S & E TIMBER



SUMMER HOUSES
DOG KENNELS
WENDY HOUSES
CHICKEN COOPS
RABBIT HUTCHES

SINCE 1980
HEAVY DUTY BESPOKE
SHEDS/KENNELS
MADE TO MEASURE

- Heavy Duty Fence Panels**
- Oriental Garden Features**
- Garden Trellis**

Skirting/Architrave
• Handrails • Dado Rail
• Door Casings • Shiplap

Heavy Duty Fence Panels, Concrete Posts & Plinths



All Planed and Rough Sawn Timbers

Decking Kits
10' x 10' - £170
12' x 12' - £250

SLEEPERS!
- New & Reclaimed

Natural Sandstone Paving -
Patio Packs from £17.50sq/m

- Matchboard • Floorboards
- T & G Cladding • Loft Insulation • Beading
- Wide Range of Plywood • Chipboard
- Eliotis • Plaster Board • M.D.F.

UNIT 45, TRENT ROAD, BOUGHTON INDUSTRIAL ESTATE SOUTH
Telephone: 01623 861364
OPEN:- 8am - 5pm Mon-Fri; 8am - 3pm Saturdays

Stockists of
PICNIC TABLES &
GARDEN BENCHES

**PETER WARD
SOLICITOR**

TURNER ATKINSON & WARD
SOLICITORS

23, HIGH STREET EDWINSTOWE NOTTS NG21 9QP

TEL 823450

FAX 823456

**TURNER ATKINSON & WARD OFFER
A FULL RANGE OF CONVEYANCING
SERVICES, PREPARATION OF WILLS,
AND ADVICE AS TO PROBATE**

**APPOINTMENTS ARE AVAILABLE AT
SHORT NOTICE AND HOME VISITS ARE
MADE UPON REQUEST**

**WE ARE AUTHORISED AND REGULATED BY THE
SOLICITORS REGULATION AUTHORITY
REGISTRATION NUMBER 101320**

Edwinstowe Christmas

Edwinstowe Parish Council
Working to make a difference

Meet Santa
Balloon Modellers
Stilt Walkers
Punch & Judy

Fairground Ride
Candy Floss
Games
Craft Stalls

Live Music & Magician
Brass Band
Dutch Organ
Fire Engine

Plus: Library open for childrens activities,
live music and mince pies

Thursday 27th November 4.30pm - 7pm

A BIG Thank you to
Forest Holidays
for providing this years **SANTAS GROTTO**



New This Year

Activites & Festive Fun in
the **BARGAIN BOOZE** courtyard

& **CHURCH FARM WORKSHOPS** (behind the village hall)

Bargain Booze
Select Convenience

EDWINSTOWE ROYAL BRITISH LEGION NEWS

The first meeting held at the Manvers Arms on the 20th August was a great success with new and old members turning up. It was also good to see Warsop members attending. The Remembrance Day Parade is being organised by Phil Jones the Secretary, along with Paul Laycock the Chairman. The Dedication of the new Branch Standard took place on the 31st of August and the old Standard was laid up. We were honoured by

the presence of the Chairman of Nottinghamshire County Council and the Chairman of Newark and Sherwood Council, as well as the County President and Chairman of the RBL, thanks go to the Rev'd Louise Holiday and Edwinstowe Church. For hosting the event also the ladies that organised the cakes and tea in the Village Hall.



David Poyser



Councillor John Peck Presents The Bowls Club WITH A CHEQUE

The season has just finished and even though we are small in number we've enjoyed a successful campaign. We finished 3rd and 4th in the Tuesday North Notts 3 x 3 the Mansfield Thursday 4 x 2 and Saturday 3 x 3. The only blemish was the North Notts Wednesday league where we could be relegated. Sunday 28th September we held our annual Brian Hawkins and Ron Mapletoft open pairs competition where 38 players took part. We were blessed with the fine weather and many spectators. The final was a close fought affair with P. Glover and J. Brassington from Mansfield Racecourse Road. We are holding our A.G.M on Monday November 10th at the "Manvers" at 7:00pm and look forward to anyone interested in bowls to attend. You would be most welcome.

If anyone would like to know more please contact Rod Sampson on 01623 822448 Thank you

MANSFIELD REPORTER & SUTTON TIMES

Jan 1900

On Tuesday Night an operetta, entitled 'Rip Van Winkle' was successfully performed in the schoolroom, the proceeds being in aid of the Edwinstowe Branch of the Girls' Friendly Society. The piece, for the production of which Mrs Hayman, Miss Holmes, and Mrs Moore were mainly responsible, was in four acts, concluding with a patriotic finale, with Tableau representing Great Britain and her Colonies, this item being particularly effective. The whole of the characters were well sustained, the following being the cast:-

Rip van Winkle, Mr Nonsuch; Rory O'Moore, Mr. Rabbitt; Paul Pry, Mr Brown; Dickory Dock, Mr. Hazeldine; Dainty Davis, Mr. P. Hayman; Widow Winkle, Miss Holmes; the Red Witch, Miss Hayman; Meg Merrileas, Miss Curtis; Jenny Jones, Miss Scrimshire; Mary Morrison, Miss Fletcher; Mary Winkle, Miss Ivy Fletcher; Penelope Prim, Miss Bowring; Britannia, Mrs Moore; Chorus of Witches, school children, volunteers, etc. The incidental music and accompaniments were played by Mrs Hayman.

Gourmet
CLASSICS

Our local Family Business offer delicious, healthy Ready Meals prepared by chefs not machines.

*For your free brochure,
Speak to Rachel, Chloe or Abi on
01623 862679 or visit our website
www.gourmetclassics.co.uk*

Edwinstowe Hospice Support Group **WE HAVE DONE IT!**

We have now given £100,000 to The John Eastwood Hospice! A big THANK YOU to the people of Edwinstowe who have supported our fund raising for so many years. Thank you for buying tickets for events, spending on coffee morning stalls and raffles, and on plants and merchandise. Thank you for placing money in collecting cans and badge boxes, donating goods and giving generously of your time. Thank you to those who have given money to us from their own sales and events and as personal donations. Thank you to our helpers and especially to all members of the Support group past and present.

An example of the support we receive took place on Saturday 20th September when 'Jean and Tracey's Garden Fete' raised over £2000. Thank you to Jean, Bryan, Tracey and Jason for running the event and for once again donating the money to the Support Group for the benefit of patients in The John Eastwood Hospice. On Saturday November 22nd, in the Village Hall, we will be holding our Christmas Coffee Morning where, along with our usual stalls, you will find Christmas cards and gifts for sale, not forgetting a very fine raffle.

Then on Thursday 27th November we will be holding a stall on the High Street during the 'Lights' festivities. Come along and enjoy the Christmas hamper raffles!

Once again, thank you on behalf of the patients and staff of The John Eastwood Hospice.

PHIL ROBINSON

Abbey Road **Art and Card Group**

Since July we have enjoyed the company of each other every Friday afternoon at the Abbey Road Centre and as there are several members who celebrated birthdays in July, August and September, home made cake, cream buns and other delights have appeared at our half time break to mark these occasions – it's a good job we are an art and card group and not a slimming organisation!

Our membership numbers remain steady and most of the card makers have now started to make their Christmas cards. This may sound a little premature but each year home made greetings cards are becoming more and more popular as they can be designed with the personalities of the recipient in mind.

Due to work taking place at the end of September/beginning October inside the Centre we made alternative arrangements for 2/3 weeks as to where we met. Should you wish to contact us during that time I can be reached at Barbara.freer@btinternet.com or by telephone on **(01623) 825518**

ABS Tiling and Plumbing

01623 822350 07771 794037

My team specialises in Bathroom and Wet Room installation. We can manage the project from the planning stage onwards, supply the stock or simply come in to fit your new suite and tiles.

You won't need to bother finding traders with the skills required to complete your bathroom, we have qualified craftsmen for planning, surveying, tiling, plastering, joinery, plumbing and electrical work.

We install level access Wet Rooms to NSDC approved standards for customers with mobility and access problems. We can also advise whether your wet room qualifies for full or partial exemption to VAT if you are disabled.

Of course we also install luxury high specification Wet Rooms at prices that can be significantly less than a bath/shower combination.

Traditional bathrooms are usually installed within 5 days and we never leave you without a loo!

Call now for first class service from a local business offering:

- Free quotation, planning and survey (regardless of the number of meetings needed)
- Installation costs are half those of leading DIY retailers
- Tiles and suites from leading suppliers charged to you at the trade prices available to me
- Removal of all waste at the end of every day
- You pay when the job is complete and you are completely satisfied
- Two year workmanship guarantee

I don't have a website I live in Edwinstowe! Come and see me at 20 High Street where I can show you examples of my work. I can come to if you call either of the numbers above.

Kettlewells

14 Nov	3 Days	Blackpool Irish Country Music Weekend	£230
12 Dec	3 Days	Beaulieu at Christmas	£166
30 Dec	4 Days	New Year Celebration - York	£286
19 Jan	5 Days	Holme Lacey Hereford - Warners	£275
1 Feb	5 Days	Loch Lomond All Inclusive	£250
16 Feb	5 Days	Torquay 40's Theme	TBC
16 Mar	5 Days	Weymouth Mock Cruise	£294
27 Mar	4 Days	Brugge	£260

DAY EXCURSIONS

Sun 9 Nov	Crafts for Christmas/Hobby Crafts etc NEC	£17.50	£17
Sat 22 Nov	Knitting & Stitching Show - Harrogate	£14.50	£14
Thurs 27 Nov	York St Nicholas Fayre	£13	£12.50
Sat 29 Nov	Harrogate Christmas Market	£14.50	£14
Sun 30 Nov	Good Food Show or Motorcycle Show NEC	£17.50	£17
Sat 6 Dec	Lincoln Christmas Market	£11	£10.50

Torquay Turkey & Tinsel

5 Days 3 November

Includes excursions, fantastic Christmas decorations & top class professional entertainment

Half board £260

THEATRE TRIPS		AD	SC	CH
Sun 23 Nov	Thursford Christmas Spectacular	£51 All one price		
Sat 13 Dec	Peter Pan - Northern Ballet - Leeds	£52 All one price		
Sat 3 Jan	Snow White & the Seven Dwarfs - Nottingham	£43.50	£43	£42
Sat 3 Jan	Top Hat - Leeds	£57 All one price		
Tue 27 Jan 15	Strictly Come Dancing - Sheffield	£59.50		£59

CHECK OUT OUR WEB SITE

WWW.KETTLEWELLSCOACHES.CO.UK

FOR ALL 2014 HOLIDAYS

Bistro To RE-OPEN

On Friday 10th October Edwinstowe village saw the opening of the Bistro on its popular High St. It is under the new management of chef Dariusz Kubicki, a well known chef in the area of Newark and Lincoln.

Dariusz has eleven years experience working in well known hotels and restaurants, including Cafe Bleu in Newark, previously voted Best Restaurant in the East Midlands. More recently he has managed his own public house where he has built his reputation for excellent food and great hospitality.

Dariusz has spent the last few months searching the local area for a smaller, more intimate premises to enable him to concentrate on his passion for presenting delicious food sourced from fresh local produce.

The Bistro is the perfect place for Dariusz and his family as he wants to create a welcoming, homely atmosphere where locals can spend precious time socialising and enjoying good company and food.



FOR BOOKINGS. PLEASE CONTACT DARIUSZ AT THE BISTRO ON TEL.. 01623 824880

The Welfare site- what will happen to it?

Parish Councillors Celia Brooks, Dennis Tattershall and John Peck met with officials from CISWO to discuss the future of the Welfare Site. It would appear there are no plans to develop the area until 2018 and so Councillors pointed out the demolition of the site was not adequate and all the loose bricks and rubble needed to be cleared up or the site would attract anti-social behaviour.

CISWO could not say at this time, what they propose to do with the area, but Councillors are assuming there will be a planning application for housing at some future date. Councillors expressed the view that our preference would be for a development of bungalows suitable for the elderly, as there is a big demand for bungalows in the village. Councillor Brooks said, "we held a constructive discussion and we hope the site will be developed in a way which benefits the village. We are also in negotiations to make sure the future of the bowls green and the bowls club is assured. This is an important community facility which we strongly support. We also think there is the possibility of creating a bigger, better play area and we hope to be able to reveal more on that in the future."



CLOTHES CHARITY BIN

Get rid of all those unwanted clothes in time for winter, by donating your pieces to The Firefighters Charity.

Nottinghamshire Fire and Rescue Service have installed a clothing bin outside the Edwinstowe Station in a bid to help raise money for the cause.

The Firefighters Charity is a nationwide charity which provides support to firefighters, rescue personnel and their families who may be injured, sick or need welfare services.

It costs £9 Million a year to keep running and donations are completely reliant on the public and events that the firefighters hold.

For further advice on fire safety, contact your local fire station or visit www.notts-fire.gov.uk or <http://www.facebook.com/firekills>.

The bin has already been installed for a few weeks and many members of the public have been kind enough to offer their items. However the service is keen for more clothes to be donated.

Nick Hopkins, Station Manager for Edwinstowe said; "Clothing bins around Nottinghamshire have been very successful in the past for raising money for the Firefighters Charity. We are hoping that the bin outside our station will be the same."

"We thank everyone who has already donated their items to us but we urge more people to give us any unwanted items to help us raise as much money as possible for such an important cause."

For further information, please contact:

**VICKY BROWN, COMMUNICATIONS MANAGER,
NOTTINGHAMSHIRE FIRE AND RESCUE SERVICE,
ON 0115 967 5893, 07967 690722,
OR EMAIL VICKY.BROWN@NOTTS-FIRE.GOV.UK .**

**REBECCA ROSS, COMMUNICATIONS OFFICER,
NOTTINGHAMSHIRE FIRE AND RESCUE SERVICE,
ON 0115 967 5889,
OR EMAIL REBECCA.ROSS@NOTTS-FIRE.GOV.UK.**

September has seen a rise in theft from vehicles with a particular hot spot around Occupation Lane. Residents are urged to ensure that all vehicles are locked, alarmed and that no valuables are left on display. In last month's newsletter we informed residents of a free shed alarm initiative.

stock. However if you require any crime prevention advice please contact your local beat team. A member of the local beat team will be holding beat surgeries in the village hall over the coming months. We are trailing a slightly later time to allow people to visit on their lunch breaks. Next dates are as followed.

Tuesday 25th November at 12pm
Monday 15th December at 12pm

The next Safer Neighbourhood Group meeting will be held at the village hall on 18th November at 6pm, this is a priority setting meeting for the area and your chance to discuss issues where you live. Thank you, PCSO 7455 Laura Bowditch and PC Ian Appleby

Plastic banners and shop signs on the High Street- concerns expressed

Edwinstowe High Street is a designated conservation area and Newark and Sherwood District Council has detailed planning guidelines about such things as advertising boards, the style and size of shop signs, the style of shop frontages and so on. Councillors are concerned that these guidelines are not being followed and made a strong complaint about plastic banners which are erected around the High Street. Councillors John Peck and Celia Brooks had a site meeting on the High Street during August, with Planning Officers from the District Council. Several examples were found of shop signs which do not conform to the guidelines. They should be in traditional style and in keeping with the conservation area. Concerns were also expressed about the increasing number of plastic advertising banners hung on fences and the number of A boards placed on the pavement.

Councillors John Peck and Celia Brooks in a statement said: "we want the Planning Department to enforce the guidelines more rigorously. Our High Street has a particular character and it is popular with both locals and visitors. We do understand the need for traders to promote their businesses, but if the appearance of the High Street becomes tacky and down-market, it will actually be less likely to attract visitors. Visitors to the High Street do not want to see every railing covered in a mass of plastic banners, A-boards all over the pavements and loud, brightly coloured shop signs. The Parish Council has been working hard to get rid of boarded up buildings and has been making improvements to the High Street. Villagers are very proud of Edwinstowe and we are lucky to have a thriving High Street. We will be keeping a very watchful eye to make sure the rules which apply to the village conservation area are not flouted."



DUDLEY TAYLOR PHARMACIES LTD

25 High Street, Edwinstowe, NG21 9QP

Tel 01623 822207

Opening Times

Monday - Friday 09.00 - 13.00 14.00 - 18.00

Saturday - 09.00 - 13.00

Sunday - Closed

LIBRARY OPENING TIMES

Tuesday: 9.30 - 1.15 & 2.00 - 6.30

Thursday: 9.30 - 1.00

Friday: 9.30 - 1.15 & 2.00 - 5.30

Saturday: 9.30 - 12.30

Monday, Wednesday & Sunday: Closed

MAJOR OAK MEDICAL PRACTICE

Opening Times

Monday: 7.00 - 18.00

Tuesday: 7.00 - 18.00

Wednesday: 8.00 - 18.00

Thursday: 8.00 - 18.00

Friday: 7.00 - 18.00

Weekend: Closed

Local INFORMATION

Please visit the Parish Council website at EDWINSTOWE.CO.UK which contains lots of useful information, including what's going on in and round Edwinstowe.

If you do not have access to the internet, the Library has a public access computer,

THE FOURTH AVENUE CHILDREN'S PLAY AREA- PARISH COUNCIL PLANS UPGRADE

The Parish Council have recently taken over managing the play area on Fourth Avenue from Newark and Sherwood District Council. This means the Parish Council is responsible for all three parks and play areas in the village: Fourth Avenue, Henton Rise and Jubilee Park.

The Fourth Avenue play area is looking a bit tired and in need of an upgrade. Therefore Parish Councillors have been holding discussions with CISWO, about building a new play area as part of the redevelopment of the former Welfare site. Parish Council Chair, Councillor Celia Brooks said, "we are pleased to have taken over the management of the play area. We think we can do a better job of looking after the facility on a daily basis, as we do with all the other community facilities in the village. We also think there is an opportunity to create a better play area and we are optimistic we can make



For More Information Visit www.edwinstowe.co.uk

The Parish Council has launched its much improved web site. It's much easier to navigate, looks more attractive and will be regularly updated. Do have a look and add it to your "favourites". You will be able to keep up to date with what's happening in the village, search for a tradesperson, read "Edwinstowe Village News" (including back copies) online, or if you're interested, read Parish Council minutes (yes, some people do!). We also hope it will be useful to visitors who are looking for accommodation or things to do in the area. The web site address is www.edwinstowe.co.uk

If you are a local business, tradesperson, club or community group and would like to be listed on the web site (free of charge) please email edwinstowe.pcc@btconnect.com

INCLUDING WHAT'S GOING ON IN AND AROUND EDWINSTOWE.

PARISH COUNCIL OPPOSES EDWINSTOWE housing development

The Parish Council, at its October meeting, agreed to back residents, in opposing an application for outline planning permission for 72 houses on land to the rear of Robin Hood Avenue. The residents and Parish Council believe the village is now developed to its capacity and the village infrastructure cannot reasonably sustain further development. The schools and medical practice are full, there are concerns about the character of the village being affected by over-development and the location of the planning application raises concerns about highway safety at the access to the main road.

Extension of pavement ON MANSFIELD ROAD

The pavement on Mansfield Road has been extended down to opposite the nursing home on Mansfield Road. The work has now been completed. Local M.P., Mark Spencer and County Councillor, John Peck had both asked the Highways Department to extend the path to make access to the nursing home easier.

Sparkling Sherwood

The Sherwood Forest Trust has secured funding from The Big Lottery Fund – Awards for All, and are working with Nottinghamshire County Council to showcase Sherwood in a different light.

This is your chance to join in this unique experience that has never been held at Sherwood Forest. So don't miss the opportunity!

You'll enjoy an evening stroll on the path to and from the Major Oak, the paths are easy for everyone to get around even with a pushchair or wheelchair and there are a limited number of mobility scooters that you can hire at the centre (book yours when booking your tickets).

Sherwood Forest is a magical space, full of mystery and myth. It's also home to the most amazing trees you'll get to see in Britain. As part of the Diamond Anniversary of the Sherwood Forest National Nature Reserve becoming a 'Site of Special Scientific Interest' in 1954 we want to invite you to join us as we take you on a magical journey, an illuminating adventure as you discover the Sherwood's ancient oak trees sparkling like diamonds.



**EDWINSTOWE
AERIAL & SATELLITE
SPECIALISTS**

Freeview / Freesat / Sky

SINGLE POINTS TO FULL SYSTEM.
FM / DAB AERIALS
RETUNES / SET UPS / TV'S WALL MOUNTED
EXTRA TELEPHONE POINTS

**FULLY QUALIFIED ENGINEER WITH
30 YEARS EXPERIENCE**

10% DISCOUNT FOR OAP'S



CALL FREE ON: 0800 3345650

7 DAY SERVICE, SAME DAY IF REPORTED BEFORE 10:30AM
NO VAT TO BE SCARED ABOUT

WHEN
Friday 5th and Saturday 6th December
6PM - 7.30PM (timed tickets)
Sunday 7th December
5PM - 6.30PM (timed tickets)
HOW to BOOK TICKETS

Tickets go on sale on 6th October 2014

£2.50 PER PERSON

Call 01623 823 202

Places are limited, tickets Must be
purchased in advance and are
subject to availability



Sparkling Sherwood

Here we are in the Season of Mists. Christmas puddings and cakes need to be made so that the fruit for same can have time to soak in the fruit juice (of whatever category) to provide the Mellowness required for the season.

The days are definitely becoming shorter and the temperatures colder and we are turning up for Choir rehearsal with a few more layers about our persons.

We continue to rehearse every Wednesday evening from 7-30pm. until 9-30pm. in the Concert Hall at the Dukeries Academy in Ollerton.

The Dukeries Singers

This is accessed via the Sports Hall Entrance and Car Park on Boughton/Retford Road ..

We are singing a good variety of Christmas music including Traditional, Modern, and Medieval renditions. Our brains get a good workout on practise nights one way or another. We also have time for a break at half time as we are such a friendly group of people and socialisation and chat time is important to us.

I hope that your harvests have all been good ones, that the weather treats us kindly, and that all **YOUR PREPARATIONS FOR THE SPEEDILY APPROACHING CHRISTMAS SEASON ARE MOVING SMOOTHLY.**

Our Calendar for the coming months is :

Sunday	30th November	2-00pm	Carols in the Courtyard at Rufford Park
Saturday	6th December		A concert at the R.A.F. Club, Newark
Wednesday	10th December		A concert at Farndon Memorial Hall for the Horticultural Society
Saturday	13th December		A concert at Edwinstowe Village Hall
Sunday	14th December		Carols at Sherwood Forest Visitor Centre, Edwinstowe, 2-00pm
Friday	19th December		Carols at Bishop's Court Residential Home Boughton, 3-00pm

The Fourth Avenue Children's Play Area- Parish Council Plans Upgrade

The Parish Council have recently taken over managing the play area on Fourth Avenue from Newark and Sherwood District Council. This means the Parish Council is responsible for all three parks and play areas in the village: Fourth Avenue, Henton Rise and Jubilee Park.

The Fourth Avenue play area is looking a bit tired and in need of an upgrade. Therefore Parish Councillors have been holding discussions with CISWO, about building a new play area as part of the redevelopment of the former Welfare site. Parish Council Chair, Councillor Celia Brooks said, "we are pleased to have taken over the management of the play area. We think we can do a better job of looking after the facility on a daily basis, as we do with all the other community facilities in the village. We also think there is an opportunity to create a better play area and we are optimistic we can make that happen."



More than 250 students in Edwinstowe will be taught about Road Safety by Nottinghamshire Fire and Rescue service as part of a nationwide campaign.

Local firefighters will be working with colleges and schools as part of Road Safety Week which runs from 17th-23rd November.

The students will all be in sixth form and may have or will already be thinking about learning to drive.

For further information, please contact:

Rebecca Ross, Communications Officer, Nottinghamshire Fire and Rescue Service, on 0115 967 5889, or email rebecca.ross@notts-fire.gov.uk

Vicky Brown, Communications Manager, Nottinghamshire Fire and Rescue Service, on 0115 967 5893, 07967 690722, or email vicky.brown@notts-fire.gov.uk

For further advice on fire safety, contact your local fire station or visit www.notts-fire.gov.uk or <http://www.facebook.com/firekills>.

Nick Hopkins, Station Manager for Edwinstowe said; "We wanted to talk to these students as they are often are the age group most at risk from Road Traffic Collisions.

"They are just learning to drive or may have passed their test so they may not be 100 per cent aware of the dangers they could be getting into.

"These talks have been greatly received. In the future we hope that by teaching the students about road safety that they will be more aware and vigilant in the future when driving."

KEY BUILDING SUPPLIES LTD

ROAD C, BOUGHTON INDUSTRIAL ESTATE, BOUGHTON,
NEWARK, NOTTS, NG22 9LD. Tel: 01623 861735

email: keybuildingsupplies@hotmail.co.uk • www.keybuildingsupplies.com



FOR ALL YOUR BUILDING AND LANDSCAPING NEEDS...

***MASSIVE STOCKS OF HOUSE
COAL, SMOKELESS FUEL,
DRY SPLIT LOGS - BULK BAGS
& NETS, GAS & ROCKSALT***

**STOCKISTS OF BLOCKS, BRICKS,
CEMENT, AGGREGATES, PLASTERS &
BOARDS, TIMBER, TILES & FENCING,
ETC. VARIED RANGE OF DECORATIVE
MATERIALS INC GRAVELS AND**

**PAVING. CRANE AND TIPPER LORRIES AVAILABLE
FOR DELIVERIES. EXTENSIVE RANGE OF PRODUCTS
IN OUR ON SITE SHOP!**



Brick cutting service, also brick slips & arches: www.keybrickcutting.com

EGMANTON PLANT HIRE & TOOL HIRE

TELEPHONE / FAX : 01777 872316 MOBILE 07971627588

Your Local Friendly Service Meeting Your Plant Hire Needs

<u>BUILDING EQUIPMENT</u>	<u>£ Day</u>	<u>£ / Week</u>	<u>PLUMBING</u>	<u>Per Day</u>	<u>Per Week</u>
Mini Digger	50.00	200.00	2" Petrol Water Pump	10.00	35.00
Skiploading Dumper	40.00	120.00	2" Petrol Water Trash Pump	10.00	35.00
Electric Mixer (inc. barrow & shovel)	7.50	20.00	2" Submersible Pump 110v.	10.00	35.00
Compactor Plate	10.00	35.00	Pipe Freezer 110v	20.00	40.00
Trench Rammer	15.00	45.00	Drain Rods	5.00	10.00
Bomag Pedestrian Roller	20.00	60.00	Drain Unblocker		3.00
Bentford Ride on Roller	40.00	120.00	Stilsons		2.00
Bosch Grinder 230mm 110v	10.00	35.00	<u>SITE ELECTRICAL</u>		
Stihl Stone / Steel Saw 12"	10.00	35.00	Petrol Generator 4 KVA Dual Voltage	15.00	40.00
Floor Saw 14"	15.00	50.00	Petrol Welder 200amp	25.00	60.00
Petrol Clipper Saw Bench	15.00	50.00	Transformer 3 KVA	3.00	10.00
6m Bull Float	10.00	40.00	Festoon 110V	5.00	10.00
Concrete Poker	15.00	40.00	Plastering Light 110V	7.00	15.00
Block Splitter	12.00	30.00	<u>DECORATING</u>		
Builder's Trestle		3.00	Tile Cutter 110V	15.00	40.00
Banded Boards		2.00	Wallpaper Stripper 110V	5.00	15.00
Acro Props		2.00	Dehumidifier	15.00	40.00
Strong Boy Attachment		4.00	Floor Sander	15.00	40.00
Turbo Roofing Torch Kit	10.00	20.00	Edge Sander	15.00	40.00
Roof Ladder 18ft.	10.00	20.00	<u>GARDEN & HORTICULTURAL</u>		
3 Stage Ladder (30ft)	10.00	20.00	Petrol BHP Rotavator	20.00	60.00
<u>DRILLING & BREAKING</u>			Petrol Shredder / Chipper	30.00	120.00
Towable Compressed Air Breaker	25.00	80.00	Petrol Scarifier	14.00	40.00
Hydraulic Breaker	20.00	60.00	Petrol Turf Cutter	20.00	45.00
Two stroke Petrol Breaker	20.00	60.00	Petrol Strimmer (inc line or blade)	12.00	35.00
<u>ELECTRIC 110 Volt</u>			Petrol Hedge Cutter	12.00	35.00
Bosch SDS Plus Light Breaker	7.50	20.00	Petrol Lawn Spiker.	20.00	40.00
Bosch SDS Max Medium Breaker	11.00	30.00	Petrol Lawn Sitter	20.00	40.00
Bosch Heavy Breaker	14.00	40.00	Gas Flamed Weed Gun	10.00	20.00
Bosch SDS Plus Drill	7.50	20.00	Post Hole Borer 4"6"10"	20.00	60.00

All electrical 110V equipment comes with Transformer & RCD

VAT to be added to all items

FIRST EVER

Major Oak Woodland Festival

The weekend of 13th & 14th Sept saw the first ever Major Oak Woodland Festival organised by The Sherwood Forest Trust (SFT) in partnership with Nottinghamshire County Council (NCC). The focus of the event was the 60th Anniversary of Sherwood Forest designated as a Site of Special Scientific Interest (SSSI).

20 lucky visitors each day had chance to see the Major Oak close up and high up, as they were lifted safely into the canopy of the tree on a Mobile Elevated Work Platform (MEWP), commonly known as a 'cherry picker'. This was the first time such an opportunity had ever been organised and presented a once in a lifetime experience.

Patrons: Sir Andrew Buchanan, Norman Lewis MBE, Hugh Matheson,
Trustees: Terry Yates (Chair), Henry Parr (Vice Chair), Robert Beatty (Treasurer), Ian Butterfield (Secretary), Nick Parsons, Prof. Charles Watkins, Carl Cornish, Keith Laird, Andy Medhurst, Andy Statham.

Working to ensure the survival of historic Sherwood Forest as a national treasure for future generations of people and wildlife

Festival goers also had another rare opportunity – the chance to ask the Major Oak a question! The best questions were picked out and read aloud by the Wildman of the Woods and yes, the Major Oak really did answer!

Other festival attractions included heritage crafts, traditional toys, tree surgeons, outdoor learning displays, community archaeology, Bugs n Critters, bee keepers and the old tool store. There were also some wonderful examples of how conservation management in Sherwood Forest has changed over the years, including horse loggers and traditional woodland management techniques.

www.sherwoodforest.org.uk

SPEEDING ON RUFFORD ROAD-

New interactive speed sign to be installed

Several residents on Rufford Road have reported concerns about speeding to local Councillors and the Safer Neighbourhood Group. Because of the speeding problems, Edwinstowe's County Councillor, John Peck, has been successful in obtaining an interactive speed sign which will be installed at the top of Rufford Road. These signs, which flash up the driver's speed, like the ones on Ollerton Road and Mansfield Road, have proved to be successful in getting many motorists to reduce their speed. John said, "residents on Rufford Road have been concerned about speeding for a long time and I'm confident the speed sign will help to reduce the problem. I've also asked the police to carry out regular speed checks on Rufford Road. I've met with the Highways Officer to agree the location and the sign should be installed by the end of the year."



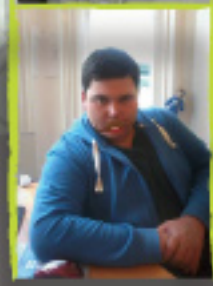
R.I.P ALAN

1988 - 2014

Alan the first day we met i knew,
I knew you were big, broad and true,
With your dark wavy hair
And thatYorkshirmen stare
And your hole in your talking shoe

My friend till the end, then until we meet
Always keep safe and sweet,
Now you are gone and everything's changed
And now i've got no-one to blame,
I promise you friend I will carry on
And fulfill what we set out to do

One day we will meet and you will find
Ive evolved physically and inside my mind,
You taught me a lot with your daft ways,
Now you've gone I think of those days
I wont be sad when I think of you
With your dark wavy hair
And thatYorkshirmen stare
And that hole in your talking shoe



Sadly we write this article out of love and admiration to a brilliant young man taken away from this world far to early. **ALAN WAS ONLY 26 WHEN HE PASSED RECENTLY AND THIS POEM IS FOR YOU MY FRIEND.**

Tribute To Alan James Pearce

REMEMBRANCE DAY PARADE Sunday 9th November 2014

- Assemble at Fourth Avenue Car Park
- 09.20** (on Fourth Ave near Nursing Home)
- On Parade
- 09.30**
- March Off
- 09.40**
- Arrive St Mary's Church
- 09.50**
- Service Commences
- 10.00**
- Service Ends
- 10.40**
- Fall In
- 10.45**
- March Off
- 10.50**
- Re-Form War Memorial
- 10.55**

MEMORIAL SERVICE Commencing with:

The Act of Remembrance and Roll of Honour- Minister
Then Shall Be Said: The Act of Homage

"THEY SHALL GROW NOT OLD, AS WE THAT ARE LEFT GROW OLD AGE SHALL NOT WEARY THEM, NOR THE YEARS CONDEMN AT THE GOING DOWN OF THE SUN AND IN THE MORNING WE WILL REMEMBER THEM".

Response by all:-
WE WILL REMEMBER THEM

The Last Post
2 Minutes Silence



"WHEN YOU GO HOME, TELL THEM OF US AND SAY, FOR YOUR TOMORROW WE GAVE OUR TODAY"

Laying of wreaths
Service Ends With The National Anthem & the Final Blessing
March Past the Saluting Base- High Street
Halt at Nightingale Nursing Home
Dismiss

Visit www.thedukerieslodge.co.uk to view the full menu

Book
now for
Christmas

DUKERIES LODGE

EDWINSTOWE



Christmas Fayre £14.99

Mon 1st December to Wed 24th December 2014

Christmas Day £44.95

A great deal.. more!

T. 01623 822553

E. enquiries@pubpeople.com

High Street | Edwinstowe | Nottingham | NG21 9HS



www.pubpeople.com

www.thedukerieslodge.co.uk

SHERWOOD DIAMOND JUBILEE FINALE WEEKEND

Friday 5 - Sunday 7 December
Sherwood Forest Visitor Centre

A chance to see some of the treasured Sherwood memories we have been sent by visitors to mark this very special anniversary year – come along and be inspired! Something to submit? Visit our website to find out how. Join us for the spectacular finale to our year of celebrations in this special Diamond Jubilee year. See Sherwood's ancient oak trees in a whole new light, literally, as we invite you to take a walk through the illuminated forest – a truly magical start to winter and a memorable experience to treasure.

SHERWOOD MEMORIES EXHIBITION

Friday 5 - Sunday 7 December

FREE

SPARKLING SHERWOOD

Friday 5 and Saturday 6 December
2014 - 6pm, 7pm, 8pm - Timed Tickets
Sunday 7 December 2014 - 5pm, 6pm,
7pm - Timed Tickets
Sherwood Forest Visitor Centre
£2.50 per person

Tickets are limited and must be purchased in advance.
For more information call **01623 823 202**.

Supported by Awards for All and the Sherwood Forest Trust.



The cold weather and shorter days are upon us but that shouldn't stop us venturing out and about to different events in and around the Newark & Sherwood area. Welbeck is hosting The Christmas Art & Food Market on 29th & 30th November and Santa arrives at Rufford Country Park on 15th November – 21 December (weekends only) and 22nd & 23 December from 11-4 and he will be at the Sherwood Forest Visitor Centre between the same hours from 30th November – 21 December (weekends only) - £5 per child including a small gift from Santa. Once the Christmas festivities are over why not blow the cobwebs away with a Boxing Day Revival Walk at Sherwood Forest 11.30-1pm adults £3, Children £1.50 and FREE car parking! Booking recommended Tel: 01623823202.

Edwinstowe teenager speaks in the House of Commons



MEMBERS of Parliament will hear a Nottinghamshire teenager deliver a speech at the House of Commons about the First World War.

Eddie Fenwick (pictured), of Edwinstowe, has been chosen to speak after being named regional winner of a competition organised by UK Youth Parliament.

The 17-year-old will be among a group of 13 national representatives who will speak during a commemoration of World War One on November 14.

He will also be taking part in the annual Youth Parliament debate, chaired by Speaker of the House the Rt Hon John Bercow MP.

Eddie, from Sherwood Avenue, was selected for a video he produced about his great-grandfather Walter Hopcroft, who went to war and survived being gassed.

Eddie said: "I am nervous but very excited to have been selected to share my speech in the House of Commons.

"I wanted to get across the huge sacrifice that people made during the war, as well as talk about my great-grandfather, who was only a teenager himself when he fought.

"I am so proud that my entry has won."

You can watch Eddie's winning video entry by visiting http://youtu.be/b_mVgqNyDsA.

News from your Local Tourist Information

For the pantomime goes amongst you, Newark Palace Theatre is hosting Peter Pan from 10th December to 3rd January and Sleeping Beauty at Mansfield Palace Theatre from 29th November until 4th January 2015. There are many more events to whet your appetite so why not call into our office to see what you can find at this magical time of the year!

Please note that although details of events are correct at the time of going to press, it is always advisable to telephone in advance to confirm details. The Tourist Information Centre at Rufford Country Park is open daily 10.30am-4.30pm. You can leave a message on our answer phone and we will reply to you the following morning. Tel: 01623824545. Alternatively you can email us at sherwoodtic@nsdc.info or visit our website www.newark-sherwooddc.gov.uk and follow us on twitter www.twitter.com/homeofrobinhood

Chronic Plantar Fasciitis (painful heel)



Extra Corporeal Shockwave Treatment (ESWT) could help you - this revolutionary new technology has advantages over surgery eg:

Other conditions helped by ESWT include:

- ✓ Calcific tendonopathy of the shoulder
- ✓ Tennis elbow
- ✓ Golfers Elbow
- ✓ Trochanteric bursitis
- ✓ Proximal hamstring injury
- ✓ Jumpers knee
- ✓ Achilles tendonopathy

- ✓ Equal success rate
- ✓ Level 1 clinical evidence
- ✓ Featured in NICE guidelines
- ✓ No hospital admission
- ✓ Non invasive
- ✓ No wound dressing = no infection risk
- ✓ No need for anaesthetics
- ✓ Back to work after treatment
- ✓ Covered by most medical insurers – check with yours

Acupuncture Is an effective treatment for many conditions, including:

- ✓ Headaches & migraines
- ✓ Pain relief & pain management eg arthritic pain, back & neck pain
- ✓ Sports injuries
- ✓ Extensive experience in treating patients with fertility concerns, including those undergoing fertility treatments
- ✓ Common conditions in pregnancy eg morning sickness, back pain
- ✓ Chronic conditions eg IBS, fibromyalgia, RA
- ✓ Menstrual & Menopausal symptoms



Beverley Law 01623 624137

Nottingham Road Clinic, 195 Nottingham Road, Mansfield NG18 4AA

www.beverleylawacupuncture.co.uk

M.H. SERVICES

"Over 20 years experience"

Patios & Drives

Fencing

Trees/Hedges

Drainage

"For a tidy, reliable and friendly service, please contact Mark Hayden"

Phone: 01623 824425

Mobile: 07725 649789

Email: mandshayden@aol.com

SHERWOOD FOREST PROBUS CLUB, EDWINSTOWE

What is Probus? Is it for you?

The aim of the Probus movement is to give the opportunity for men to develop new friendships following their retirement. Usually on retirement men still feel active and mentally alert and Probus can help in the transitional period, often from a stressful full-time profession. The word Probus is an abbreviation of the words PROfessional and business, but membership is not restricted to persons from these two groups. It embraces anyone who is over aged 50 and has retired or is semi-retired.

The Sherwood Forest Probus Club meets monthly on the first Thursday of each month at the South Forest Complex, Clipstone Road, Edwinstowe. The meetings commence at 11.30 a.m. with a speaker and followed by lunch and then a short business meeting. Topics of the talks range so much these cannot be itemised!! But many are accompanied with slides or computer presentations. In addition, twice yearly club luncheons are held and occasionally outings are arranged. We are offering you an added interest in your retirement and the opportunity to join a congenial social gathering

from all walks of life. Why not give it a try and come along as a guest – there is no obligation but if you not been to see Probus, you are not really in a position to answer the question "Is it for me?"

December the 4th is the Christmas Lunch. Anyone interested please contact either President Victor Sales on 01623822256 Or Secretary Keith Wardle on 01623823006.

PARISH COUNCIL BUYS MOWER AND SAVES COUNCIL TAX PAYERS MONEY

The Parish Council is always looking for ways to cut down on costs and save the Council Tax payers of Edwinstowe, their money. Earlier this year, a second hand ride on mower was purchased, so that our staff can cut areas of grass, such as the Henton Road play area, instead of having to pay a contractor. The savings are substantial- up to £2000 per annum off the cost of our existing grass cutting contract. The mower cost £1500 and so should quickly pay for itself and will save a considerable amount of money, each year thereafter.

Councillor John Peck, who chairs the Parish Council finance committee said: "this is one of a number of savings we've made in the last three years, in our determination to reduce costs and keep down Council Tax bills. We've also negotiated a new insurance contract, stopped our CCTV contract, leased Sherwood Fields to Robin Hood Colts and halved our expenditure on village events. In all, we will have saved something in the order of £50000 during our term of office. We watch every penny and we are always looking for ways to save money."

A WORD FROM THE DUKERIES

The Dukeries Lodge is enjoying its third Christmas since it's jaw-dropping refit back in 2012. The pub, hotel and restaurant has well and truly established itself as a destination for diners, tourists and families and has been planning their Christmas Fayre and Christmas Day menu since mid-February!

If you've not visited The Dukeries Lodge lately it's highly

recommended. The décor is beautiful and the food even more so. Food is served daily from 12noon until 9pm and is supported by a Steak Club menu every Thursday as well as other special daily deals throughout the week. Mark and Karen, the management couple, nursed the pub through it's renovation two years ago and are rather proud of the Christmas Fayre offer "This year has been such a roaring success,

the team have worked tirelessly and the reception we're getting is overwhelming." Karen continues "We started work on the Christmas Fayre menu not long into the new year, going to various sampling events with our suppliers and trying to offer the absolute best quality and range of food, while trying to ensure great value. It hasn't been easy."

Christmas Fayre begins on December 1st and runs right through until Christmas Eve- with a special Christmas Day menu for the big day itself. Priced at only £14.99 for adults and £8.99 for children the menu is available in the lunchtime and evening and is a bookings-only affair. The menu aims to offer something for everyone featuring Derbyshire Pork Tenderloin, a choice of vegetarian dishes as well as gluten-free starters, mains and desserts.

Christmas Day is **£44.95** for adults and **£22.50** for children and at time of going to print was booking up fast! All of the pubs' menus, including the Christmas Fayre and Christmas Day menus are available to view online at www.thedukerieslodge.co.uk

Before all of that though you can look forward to their annual kids Halloween Party, details of which can be found on the website as well as their Facebook page- simply search for Dukeries Lodge.

SHOPPING ONLINE, BY PHONE, IN THE HOME

- more protection for consumers

citizens
advice
bureau

From June 2014, there are new rules which give you more protection when you buy online, over the phone or by mail order, or buy from a salesperson in your home (or in your workplace or in the street), or purchase and download/stream digital content, such as a movie or a game.

Or contact North Notts Advice Line
(0844) 856 3411 or (0300) 456 8369 from a mobile
Monday to Friday 10.00am - 2.00pm

FOR INFORMATION ON THE ABOVE OR ADVICE ON ANY SUBJECT

visit your local Citizens Advice Bureau at
New Dierton (5 Forest Court) NG22 9PL
Monday, Wednesday & Friday: 9.30am - 2.30pm

Newark (Keepers Cottage, Riverside Park, Great North
Road) NG24 1BL Tuesday & Thursdays 9.30am - 2.30pm

For detailed consumer advice:

check www.adviceguide.org.uk (Consumer)

telephone the Citizens Advice Consumer Service 03454 04 05 06

The main changes include:

you must be given clear and upfront information before you buy and when you make the purchase. This includes information about your cancellation rights

you'll have up to 14 days to change your mind (the "cooling-off" period - previously only 7 days)

to get a refund you will have to return any unwanted product within 14 days of the cancellation, and in good condition. (Remember to get proof of postage and, preferably, get it "Signed For" at the other end)

traders will have to tell you in advance about any fees or payment charges. You won't have to pay for any 'extras' you weren't told about before you made the purchase

websites and paperwork are banned from including pre-ticked boxes for additional items, such as insurance or warranties

OUTREACH SERVICE OPENING HOURS:

Monday: Bilsthorpe (The Surgery, 35 Mickledale Lane) 9:30am-12:30pm

Tuesday: Clipstone (The Health Centre, First Avenue) 10:00am-12:30pm

Wednesday: Blidworth (Blidworth Surgery, 59 Mansfield Road) 10:00am-1:00pm

Friday: Southwell (The Old Court House, Burgage) 10:00am-12:30pm

LOCAL ARMY CADETS CHAMPIONS AGAIN.

Army Cadets from local detachments have been celebrating success in 2014. They have celebrated high achievements in sporting events, drill competition, shooting and many other Army cadet activities.

Cadets from B Company Nottinghamshire Army Cadet Force have lots to celebrate from 2014. Achieving high standards in drill, shooting and sporting events.

Annual camp at Crowborough was very successful with the unit winning the punchbowl for the third year running. The punchbowl competition is fiercely contested by the 4 units in Notts ACF.

Consisting of sporting achievement, shooting, star passes and first aid passes the competition was won by only one point this year. Lt Daz Taylor (Training Officer) said "The competition was hard fought this year, and to win by one point is amazing and credit must be given to the cadets and adult instructors who make all this happen".

Individual cadets swept the board at annual camp also with Colour Sergeant Purdie from Clipstone detachment being promoted to Company Cadet Sergeant Major and also being appointed Lord Lieutenants cadet for Nottinghamshire. Sergeant Major Purdie said "There is no limit to what you can achieve in the ACF. I am proud to be a member of such a fantastic organisation" 2Lt Martin Sharpe added "I remember Sgt Maj Purdie joining the ACF, and to see what he has achieved is truly inspirational".

B Company also took the trophy for best detachment in Nottinghamshire (Worksop detachment). Major P Maguire, Officer Commanding B Company said "The achievements made by the cadets has been amazing. May it continue in 2015".

If you're interested in joining B Company Notts ACF your nearest detachments are located behind the Junior School, Whinney Lane, Ollerton and Carr Lane, Warsop. Or contact HQ on the number below. For information on becoming an Army Cadet, or finding your nearest detachment

contact us at the office



Nottinghamshire
ACF
120 Sweeney Way
Beeston
Nottingham
NG9 6GX
Tel. 0115 983 7642

Christmas Services in Edwinstowe 2014

Christmas Greetings from the churches in Edwinstowe and Perlethorpe

You will be most welcome at any of the services especially over the Christmas period.

A Christmas Message

Very quietly, in an every day event, Jesus was born. Or maybe it was not so quiet for Mary his mother! And of course, like any birth, it was a very special time for his family around him and for his community (shepherds and wise men). It was also a very special time for the whole world; the birth of the Prince of Peace So whether your Christmas is quiet and you are alone, or whether you have family or friends around you, pause for a moment to remember how special each baby, each person is, wherever they are born.

And may all those of any faith or no faith spend that moment remembering (or praying) for peace and for those little ones being born who will soon be refugees and whose families are living in fear of losing their lives- like Jesus Christ. May all of us help someone in need like this through one of the many charities- or perhaps someone down our street.

God bless you all, and have a happy
and holy Christmas.

FR TONY EVANS (ST MARYS)

Sunday 21 December
6.00pm Carols by Candlelight (St Marys)

Tuesday 23 December
7.00pm Carols by Candlelight
(Edwinstowe Methodist Church)

Christmas Eve (24 December)
3.00pm Crib Service for children of
all ages! If you would like to, come
dressed as a character from the
Christmas story. (St Marys)

11.30pm Midnight Mass
with Carols (St Marys)
11.30pm Midnight Mass
with Carols (St Johns, Perlethorpe)

Christmas Day (25 December)
8.00am Early Communion (St
Marys)
10.00am Family Carols and
Communion (St Marys)
10.00am Holy Communion
and Carols (St Johns Perlethorpe)





Beavers at the bushcraft day 10th Oct.

NEW ERA DAWNS AT KING EDWIN

King Edwin Primary School has a new Head Teacher. Mrs Helen Foster joined the school at the start of the autumn term. She was previously Deputy Head at Portland School, Nottingham. Mrs Foster writes:

After 19 years of teaching I feel that I am ready and well equipped to take on this next challenge. I have been very warmly welcomed by pupils, staff and parents already and I look forward to working with everyone to continue the school's journey to Outstanding. I will be looking at what already makes the school good and will be tweaking to improve even further. It is a very exciting time. Mrs Sarah Betts, Chair of Governors, said that appointing a new head teacher is always a very difficult thing to do, especially when having to fill very big boots. We are very excited and pleased with the appointment of Helen Foster and are confident that she has the knowledge, experience and determination to lead our school on the next part of its journey.

D.A Williams

Electrical Contractor

REWIRES, SHOWERS, INTRUDER ALARMS
SECURITY LIGHTING
& GENERAL ELECTRICAL WORK UNDERTAKEN

TEL: 01623 836517
07719999781



**EDWINSTOWE PRE-SCHOOL
NEEDS YOUR HELP TO
purchase former St John's hut**

Can you help us raise funds through JustTextGiving? You can donate £1, £2, £3, £5, or £10 by texting Epspl1 then the amount to 70070.

We are grateful to the Edwinstowe Lions and local businesses that are already supporting us to buy and renovate the St John's hut.

This is a valuable community building which the village would have lost if the Pre-school didn't intend to take it over for the whole village to use.

Edwinstowe Pre-school provides good quality 'outstanding' OFSTED rated childcare.

Baby & Toddler Stay & Play - Tuesday & Friday 9.30 - 11.00.

Various activities for you and your child to enjoy in a relaxed, friendly atmosphere. Meet new friends whilst your little ones play. Snack and drink included. Pre School Playgroup Sessions - Monday, Wednesday & Thursday.

For children aged 2 and over. A playgroup allowing children to grow and learn whilst playing in a relaxed and friendly environment under the supervision of highly qualified staff.

Forest Sessions - Tuesday & Friday 9.00 - 12.00 or 12.00 - 3.30 (Friday pm subject to numbers). Allow your children to explore Sherwood Forest whilst playing with other children and being supervised by highly qualified staff.

Some free places are available (subject to conditions) for children from the age of two. Please contact us on 07989 892831 for more information about any of our sessions.

Like us on Facebook to keep up to date with forthcoming events.

MAJOR OAK MEDICAL PRACTICE PATIENT PARTICIPATION GROUP



The PPG is very active in representing the patients at the Major Oak Surgery.

The Group and the practice staff summarise local patient surveys and put the results on the practice website. (paper copies available at the surgery.)

A virtual PPG is available on the practice website, participation by all the practice population is encouraged.

Last year at the request of the PPG the practice arranged for a talk on diabetes, which was well received by patients and a further successful talk was given this July by an Oncologist on breast and ovarian cancer. Further talks are planned and will be publicised.

The PPG was actively involved in a national "Put Patients First" petition. The campaign was about providing further funding for GP practices in England to enable them to enhance care for patients. Over 600 patients signed the petition at the surgery, other patients completed online. Many thanks to everyone for their support.

Our latest fundraising project is to help fund a "Patient Entry Touchscreen" for the practice; this will support patients and the receptionists and help to avoid queues forming at the reception desk. This fundraising follows on from the efforts by the PPG last year when money raised was put towards the cost of the surgery waiting room TV.

The Late Summer Fayre fundraising events held at the recent flu jab clinics raised a substantial amount towards purchase of the touchscreen. Thank you to all who contributed.

Superfast Broadband for Edwinstowe

Nottinghamshire County Council's Better Broadband for Nottinghamshire programme in conjunction with BT is due to reach Edwinstowe sometime during the Summer of 2015. The fibre based super-fast broadband network will deliver speeds up to 24Mbps- considerably faster than anything available now. This will be particularly beneficial to many businesses and will be a boost to the local economy.

Residents should be aware that BT has permitted development rights to install the poles and street cabinets in the locations they deem most appropriate. Parish Councils and homeowners are not consulted about the location but in most cases, cabinets will be installed on the public highway.

Interested residents and businesses can check proposed installation dates for super-fast broadband in Edwinstowe and when it has gone "live" at: <http://www.nottinghamshire.gov.uk/living/business/broadband/where-and-when>



Light up a Life
Appeal 2014



Shine a light for someone you love this Christmas
Call and make a donation today on
01636 610556

BEAUMOND HOUSE Community Hospice

You can also text to donate: TEXT 'LUAL32 £5' to 70070 - or any amount of your choice Service at Beaumont House Sunday 7th December 4pm

ST Mary's Church Rooms, Mansfield Road

Edwinstowe, Mansfield, Notts

Email: ROOMS@STMARYT.ORG

Bookings- Wendy Stirland,
Village exchange, High Street,
Edwinstowe **07840435796**

DAY	USER	TIME
MONDAY	Aerobics	9.30am
	Pilates	10.45am
	Aerobics	7.00pm
TUESDAY	Salsacise	7.00pm
WEDNESDAY	Cuppa and Chat	10.30am
	Chinese Painting	2.00pm
	Martial Arts	9.00pm
THURSDAY	Rainbows	4.30pm
	Guides	7.00pm
SUNDAY	Karate Class	7.00pm

**ST NICHOLAS ARRIVES
SUNDAY 30 NOVEMBER 11AM
SHERWOOD FOREST VISITOR CENTRE
CAR PARKING CHARGE APPLIES**

"FREE"

Rumours abound that the Sheriff of Nottingham is in Sherwood Forest to try and put a stop to any Yuletide celebrations – let's hope Robin Hood is around to save the day! Come along to cheer for St Nicholas as he arrives at his medieval grotto. (This event involves some stunt fighting which may be worrying for younger children unless it is explained to them). For more information call 01623 823 202.

**DOG GROTTTO
SUNDAY 30 NOVEMBER 12NOON - 3PM
SHERWOOD FOREST VISITOR CENTRE
SMALL CHARGE APPLIES
CAR PARKING CHARGE APPLIES**

No we haven't gone barking mad, but knowing how much so many of our regular visitors love their pooches, we thought it was about time they had the chance to treat their canine companions to their very own visit to Santa Paws!

A small charge will be made and includes a gift for each dog. For more information call 01623 823 202.

**EDWINSTOWE
LEISURE
PAINTERS**

Contact Graham On:
01777 870588

Edwinstowe Leisure Painters started their Autumn Term on the 8th September. Our group enjoyed a BBQ last July at Graham Laughton's studio and garden in Laxton, which was good Al-Fresco fun. Our term started with a figurative demo in charcoal and pastel and the October demo was watercolour. We always welcome new members and our day is Monday at 2.00pm till 4.00pm at Edwinstowe Village Hall at a cost of £5.00/class. Come and join us as we have a lovely class. All enquires please contact Graham on: 01777870588



**THE
TYRE SHOP**

**New, Remould and
Part Worn Tyres
Wheel Balancing**

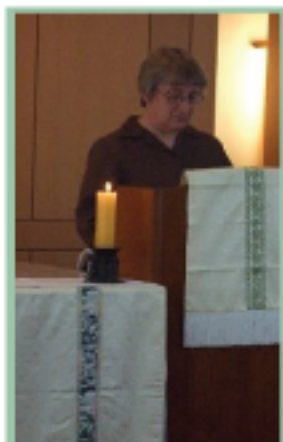
Unit 17 Beacon Court
New Ollerton
Nottinghamshire, NG22 9QL

**Tel. James:
01623 836306**

**Mobile:
07866507083**



www.tyreshop-online.co.uk



A Real Friar for EDWINSTOWE?

We all know Robin Hood had amongst his merry men a Franciscan Friar called Friar Tuck! The stuff of legend perhaps over which historians will argue.

But from October 12th we have had a real live 'friar', a member of the Community of St Francis (CSF) working from St Mary's, Edwinstowe and with our sister parishes in Clipstone and Perlethorpe.

Her name is Reverend Sister Helen Julian; I know you will all welcome her when you see her about. Here is a little she wrote about herself:-

Born and brought up in Edinburgh, I trained as a librarian and worked in Dundee for most of my 20s. At the same time I was wrestling with a sense of vocation to the Franciscan life, and after trying various paths, arrived to test my vocation with the Community of St Francis in 1985, making my life vows in 1993. After a few years as Novice Guardian, I was elected Minister Provincial in 2002; when I finished two five year terms in that role,

I was elected Minister General and continue to hold that position. In 2009 I was given permission to explore a more solitary life; and was therefore surprised to find myself also being called to ordination! That led to ordination as a priest in the summer of 2014, with a curacy in Oxford, and then arrival here in Edwinstowe to continue my training. I'm also a writer, working mainly for Bible Reading Fellowship."

Sister Helen joins the churchwardens and people of St Mary's, the Reverend Louise Holliday and myself working alongside other Christians in the village in sharing the Christian Gospel of Good News about Jesus Christ.

Thoresby Colliery

The outlook for Thoresby Colliery looks bleak. The Government has put money in to enable a "managed closure" but announced in September it would not put any funds into keeping the pit open to see out the remaining five years of its natural life. Half the employees, who were on "gardening leave," have now lost their jobs, including some from Edwinstowe. It seems there is little hope for Thoresby now and when it finally closes, it will bring to an end ninety years of Edwinstowe's proud mining history. Councillor

REVEREND Canon Tony Evans

Celia Brooks, Chairman of the Parish Council said, "the Parish Council believes every effort should have been made to keep the colliery open until the reserves were exhausted. The imminent closure is a blow to the Nottinghamshire economy. We must now make sure that the spoil heap is properly reinstated, discussions take place about what will happen to the colliery site and continue our campaign to keep the rail line open and get the Robin Hood Line extended to Edwinstowe."

PLAYGROUP/TODDLERS CLOSE DURING SCHOOL HOLIDAYS
BEAVERS/CUBS/SCOUTS CLOSE DURING SCHOOL HOLIDAYS
ART AND THURSDAY FLOWERS GROUPS CLOSE FOR SUMMER HOLIDAYS

REGULAR USERS OF EDWINSTOWE VILLAGE HALL

DAY	USER	TIME
MONDAY	Playgroup Art Class Beavers/Cubs	9.00am - 12.00pm 2.00pm - 4.00pm 5.00pm - 7.30pm
TUESDAY	Parent/Toddler Social Services Flower Club alt Weeks Flower Club alt Weeks	9.30am - 11.00am 1.00pm - 3.00pm 7.00pm - 9.00pm 6.30pm - 10.00pm
WEDNESDAY	Playgroup Card & Craft Tai-chi	9.00am - 12.00pm 1.00pm - 4.00pm 7.00pm - 9.00pm
THURSDAY	Playgroup Flower Arranging Karate	9.00am - 12.00pm 1.30pm - 3.00pm 5.45pm - 6.45pm
FRIDAY	Parent & Toddler O'DWYER ACADEMY OF IRISH DANCING	9.30am - 11.00am 4.30pm - 5.30pm
SUNDAY	Church Group 2nd week booked in every month 3rd week booked in every month	5.45pm - 8.45pm 11.00am - 4.00pm 9.30am - 11.30am

NEIL JORDAN BUILDER

**EXTENSIONS, BRICKWORK, PATIOS
BLOCK PAVING, ROOF
& CHIMNEY REPAIRS**

**RING 07793 715574 OR
01623 823385**

A Parish Poll was recently held which asked Edwinstowe residents whether they supported the decision of the Parish Council to take over the administration of the Ollerton Road allotments. The poll was called by a group of fourteen residents who oppose the Parish Council decision to take over the administration of the allotments.

The poll was not called by the Parish Council, who opposed holding the poll on the grounds of the cost to Edwinstowe Council Tax payers. Even though the Parish Council did not call the poll, it still has to pay Newark and Sherwood District Council the cost of running it. Parish Council Chairman, Celia Brooks said: "We asked the group not to go ahead with the poll as we did not think there was sufficient public interest in the matter to justify £1600 of Council tax payers' money being spent." However, 14 people out of a meeting of 42 called for a poll. Under the law, however many people attend the meeting and whatever the views of the majority, it only requires 10 people in the meeting to call for a poll which then must be held. The poll was held on 11th September. The result was 327 voted "no" to the Parish Council taking over the administration and 52 voted "yes". The organisers of the poll, who had leafleted the village, hailed the victory.

Parish Poll Called By Residents To Cost EDWINSTOWE COUNCIL TAX PAYERS £1600

However, the turnout was low at 8.9%, with 379 people voting out of an electorate of over 4100. Councillor Brooks said: "Even though the turnout was exceptionally low and the poll is not binding, the Parish Council have given careful consideration to the view expressed in the poll. We have never wanted to get involved in the problems on the Ollerton Road allotments, but we have had many complaints from allotment holders over the years and only recently, a group of allotment holders have written to us supporting the proposed Parish Council action. Our intention is to hand back the running of the allotments to allotment holders as soon as we are satisfied the problems have been satisfactorily sorted out. We have therefore set up a working group which has been meeting with allotment holders to draw up a tenancy agreement and to make sure there are rules in place which are fair to everyone who has an allotment." Even before the Parish Council discussed the matter at the Council meeting following the poll, the President of the Allotment Association announced that their committee were withdrawing from any administration of management of the site with immediate effect.

The Parish Council intends to draw up a tenancy agreement for each allotment holder, collect the rent and allocate plots to new applicants. Allotment holders will remain responsible for looking after their plots. The Parish Council leases the Ollerton Road site from Thoresby Estates to provide allotments for Edwinstowe residents. The Parish Council is therefore the "principal tenant" and feels it is therefore obliged to try to sort out the problems on the site.

COMMENTS

Please email your comments to :
edwinstowe.pc@btconnect.com or drop this form in at the Village Hall.

If you would like to submit an article or an advert for the next issue email us at: edwinstowe.pc@btconnect.com



VOLUNTEERS NEEDED

Can you spare a few hours a week?

citizens
advice
bureau

We are expanding our Telephone Advice Service and are looking for volunteer Telephone Gateway Assessors at our Ollerton Office to provide a first point of contact for callers.

We are not looking for any specific experience or qualifications.

All training will be provided and you will be given all the support and encouragement you need.

We welcome volunteers from all backgrounds. The key requirements are that you are open minded, enthusiastic, and keen to deliver an excellent level of service.

To find out more, call Lesley Barrick, our Advice Service Manager, on
01623 861769.

or email
ADMINOFFICER@OLLERTON.CABNET.ORG.UK
for a volunteer application pack.

FOR INFORMATION ON THE ABOVE OR ADVICE ON ANY SUBJECT

visit your local Citizens Advice Bureau at:
New Ollerton (5 Forest Court) NG22 9PL
Monday, Wednesday & Friday 9:30am - 2:30pm

Newark (Keepers Cottage, Riverside Park, Great North Road) NG24 1BL Tuesday & Thursdays 9:30am - 2:30pm

OUTREACH SERVICE OPENING HOURS:

Monday: Bilsthorpe (The Surgery, 35 Mickledale Lane) 9:30am-12:30pm
Tuesday: Clipstone (The Health Centre, First Avenue) 10:00am-12:30pm
Wednesday: Blidworth (Blidworth Surgery, 59 Mansfield Road) 10:00am-1:00pm
Friday: Southwell (The Old Court House, Burgage) 10:00am-12:30pm

Or contact: North Notts Advice Line
(0844) 856 3411 or (0300) 456 8369 from a mobile
Monday to Friday 10.00am - 2.00pm

For detailed consumer advice:
check **WWW.ADVICEGUIDE.ORG.UK** (Consumer)
telephone the Citizens Advice Consumer Service **03454 04 05 06**

CARPET

Bargain Centre

We've Got Floors Covered!



Carpet From £3.99m²



Vinyl From £4.99m²

***Our Price Promise... Got a Better Quote?
We'll Beat it or give you The Flooring & Fit It For Free!***



Laminate from £8.99m²



Altro, Polysafe, Etc...

Amtico, Kardean & Polyflor

Luxury & Commercial Flooring

For Free Measuring, Estimates & Home Selection Call...

01623 869500

The Shop 3 Central Buildings, Sherwood Drive, New Ollerton, NG22 9PR. (*Opposite The Co-Op*)

The Warehouse The Unit, Fairholme Park, A616 Wellow Road, Ollerton Village, NG22 9AP.



WOODHEAD

PERFECT CHOICE FUNERALS



Independent Family Funeral
Service

Available 24 hours a day

Perfect Choice Funeral Plans
(bespoke, prepaid and with
finance options available)



Serving Edwinstowe and the
surrounding villages with our
personalised service for over
65 years

Introducing our Perfect Choice Funeral Plans

Thinking about your own funeral is never an easy thing to do. However it can be a great comfort to know that you've taken care of the arrangements, which will provide financial and practical help for your loved ones at an already distressing time.

Anyone can arrange a plan, with no upper age limits, no medical and no health questions to answer. Once you've taken out a plan, all of the costs of our services will be covered when they are needed. Fully protected by the Financial Services Compensation Scheme, the plan also covers disbursements to third parties including crematorium, minister and doctors' fees.

**Please call to arrange a FREE,
no obligation quote or home visit**

We will tailor all elements to suit you and your budget

Visit us at www.woodheadfunerals.co.uk



Funeral Director: Melanie Bainbridge
Telephone: 01623 871101
Mobile (24Hrs): 07817 120487



For all postal enquiries - Woodhead Perfect Choice Funerals, Edwinstowe House, Edwinstowe, Nottinghamshire, NG21 9PR

Woodhead Perfect Choice Funerals is a trading name of Robert Woodhead Ltd Registered Company Number 1360857