

EDWINSTOWE VILLAGE

Issue: 12

NEWS

June 2015 - www.edwinstowe.co.uk - edwinstowe.pc@btconnect.com - 01623 824243



Thoresby Colliery - 9

**Latest On The
Edwinstowe Railway
Page - 12**

**More about the
New Park - 19**



Welcome to Edwinstowe Village News

By the time you read this edition of the Parish Magazine, Thoresby Colliery, the last colliery in Nottinghamshire, will be on the verge of closing, bringing to an end the ninety year history of coal mining in Edwinstowe. Many families in the village have a long and proud connection with mining and there will be many memories. The opening of the mine changed Edwinstowe from a sleepy rural village in Sherwood Forest and whilst much of the evidence of mining will gradually disappear from view the Welfare has already gone- it will be important to keep alive the history

and memories. If you have any memories you wish to share, please let us have them for our next edition. Also inside this edition, there is news about progress on the extension to the Robin Hood Line, the new play equipment on Jubilee Park and also the local election results, including who the Parish Councillors are for the next four years.

We hope you enjoy the magazine and we're always pleased to receive articles from the clubs and community groups in the village.



WOODHEAD

PERFECT CHOICE FUNERALS



Independent Family Funeral Service

Available 24 hours a day

Perfect Choice Funeral Plans
(bespoke, prepaid and with
finance options available)



Serving Edwinstowe and the
surrounding villages with our
personalised service for over
65 years

Introducing our Perfect Choice Funeral Plans

Thinking about your own funeral is never an easy thing to do. However it can be a great comfort to know that you've taken care of the arrangements, which will provide financial and practical help for your loved ones at an already distressing time.

Anyone can arrange a plan, with no upper age limits, no medical and no health questions to answer. Once you've taken out a plan, all of the costs of our services will be covered when they are needed. Fully protected by the Financial Services Compensation Scheme, the plan also covers disbursements to third parties including crematorium, minister and doctors' fees.

**Please call to arrange a FREE,
no obligation quote or home visit**

We will tailor all elements to suit you and your budget

Visit us at www.woodheadfunerals.co.uk



Funeral Director: Melanie Bainbridge
Telephone: 01623 871101
Mobile (24Hrs): 07817 120487



For all postal enquiries - Woodhead Perfect Choice Funerals, Edwinstowe House, Edwinstowe, Nottinghamshire, NG21 9PR

Woodhead Perfect Choice Funerals is a trading name of Robert Woodhead Ltd Registered Company Number 1360857

Edwinstowe's Local Election Results

People will no doubt know, Mark Spencer was re-elected as the M.P. for the Sherwood Constituency, but if you didn't catch the local election results, we've printed them below.



Edwinstowe Parish Council Result (Eleven Elected):

Chris Ayre, Labour		1094 (elected)
Louise Bainbridge, Independent	924	
Liz Benson, Labour		1209 (elected)
Celia Brooks, Labour		1165 (elected)
Michael Brown, Conservative		1051 (elected)
Josie Cocking, Labour		1088 (elected)
Andrew George, Labour	886	
Phil Jones, Independent	902	
Terry McLaughlin, Independent		1043 (elected)
Paul Peacock, Labour		1201 (elected)
John Peck, Labour		1289 (elected)
Karen Peck, Labour		1141 (elected)
Beryl Scaysbrook, Independent	823	
Barbara Starbrook, Independent		1080 (elected)
Dennis Tattershall, Labour		1200 (elected)
Alison Troop, Labour	1017	

Newark and Sherwood District Council result, Edwinstowe and Clipstone Ward (three councillors):

Keith Benison, Conservative	1682	
Celia Brooks, Labour		2327 (elected)
Michael Brown, Conservative	1475	
Phil Jones, Independent	814	
Terry McLaughlin, Independent	752	
Geraldine Orman, Conservative	1389	
Paul Peacock, Labour		2204 (elected)
Phillip Sparrow, Independent	429	
Dave Thompson, Labour		2123 (elected)

A new Parish Council, consisting of 11 members was elected to serve another four years. Also three District Councillors were elected to Newark and Sherwood District Council to serve the new ward of Edwinstowe and Clipstone for four years.



EDWINSTOWE BUILDING AND JOINERY

Specialist kitchen and bathroom fitting service – everything taken care of from design to completion.




**CALL NOW: 01623 822620/
07723 081076**

www.edwinstowebuilding.co.uk
Email: edwinstowebuilding@gmail.com

**Advertise
Your Business**
in the next edition

Peter Borrowdale

P&A Masonry Services

3 Croft Farm Close,
Everton, Doncaster,
South Yorkshire, DN10 5DJ

MEMORIAL SPECIALISTS

Tel 01777 949029 . Mobile 07890589147
E-mail: peterborrowdale@yahoo.co.uk

A family business for over 110 years
Memorials-Lettering-Renovations

Improvements to the High Street

Many of you will have seen the three new flower tubs the Parish Council has installed along the High Street near the library. Along with the summer hanging baskets, this year's floral display should be better than ever. Our Parish staff are also in the process of re-painting the cast iron street furniture, The bollards, litter bins and seats etc. Parish Council Vice-Chair, Dennis Tattersall commented, "the High Street is important to Edwinstowe and the Parish Council is determined to do what we can to keep it looking attractive. People have commented on how nice the new flower tubs look and repainting the street furniture should also improve the appearance of the High Street." A big boost to the High Street will be the development of the Jug and Glass and the Parish Council understands the new owner intends to move ahead with the project sometime this year.

Extra Spaces in the Car Parks



As you may know, the Parish Council has taken over the car parks from Newark and Sherwood District Council, with a promise to maintain free parking. The first thing the Parish Council did on taking over was to get some extra spaces marked out in West Lane and East Lane car parks. The extra spaces are in places where people have parked in the past and then sometimes got a parking ticket because they were not in the designated parking bays. This shouldn't happen now the new parking bays have been created. The traffic wardens will still be visiting though, so residents must still make sure they park inside the marked bays. The car park rules are clearly displayed on the signs and are the same as existed under Newark and Sherwood Council.

Practice Staff

Welcome to newly appointed, permanent G.Ps Dr. Stephen Wormall (m) Dr. Opeyemi Familusi (f) and Dr. Gopinath Singarevel (m) known as Dr. Gopi. Simone, carers champion, is now first point of contact for carers.



**MAJOR OAK MEDICAL PRACTICE
PATIENT PARTICIPATION GROUP**

Medicines Over Ordering

The local pharmacy is concerned by the costly over ordering of medicines; nineteen large containers of unused medication were recently sent for destruction. Please check when reordering and discuss the quantity required at medication reviews.

Appeal to Younger Patients

The PPG are interested in the views of younger patients, they can participate online or obtain details from reception.

Healthcare Talks

Further healthcare talks are in the pipeline.

Late Appointments

Sometimes patients find that their appointment time has not been met. A GP may discover an earlier patient needs more time to discuss complex or sensitive issues needing immediate attention. Please be understanding, this could happen to any of us.

Friends and Family Test

Recent monthly feedback shows an improving trend in patient satisfaction. Thanks to all who have completed questionnaires, it is important that this support continues for the practice to understand and act upon your concerns.

Access to Summary (Patients) Records

With your permission, this system allows clinicians who are providing other healthcare services for you to access your records held by this practice. Sharing your record will help the practice deliver the best level of care.

Finally, congratulations to the practice on achieving the Gold Award for commitment to a high standard of employment practices.

Sherwood Forest Country Park events

saturday 27 June

9.30pm-11pm approx.

Glow Worm Walk

Have you ever had the opportunity to see a female Glow Worm sitting patiently awaiting the arrival of her mate? The intense glow from the flightless female can best be described as one of nature's marvels.

Please note. This event involves a walk of approximately 2.5 miles in length and therefore requires a certain amount of physical fitness and is not suitable for persons with mobility issues, pushchairs or young children. It will involve a walk of approximately 1.25 miles before the glow worm colonies are reached. This event will finish in the dark so please bring a low powered torch and insect repellent is recommended. Well behaved dogs on leads are welcome but please leave laser pens at home.

Pre-booking essential on 01623 823202

Not suitable for wheelchair users

£5 per person

Saturday 11 July, 9.30pm-10.30pm

Bat Walk

Did you know that a Pipistrelle Bat can devour over 3,000 midges a night and baby bats cling to their mothers when mum flies in search of food? Join a Ranger on this evening walk to learn more about the bats of Sherwood Forest and their association with the world famous Ancient Oaks.

This event will involve a gentle stroll of approximately 1.5 miles and finishes in the dark. Please bring a low powered torch and insect repellent is recommended.

Places are limited so pre-booking is essential on 01623 823202

Not suitable for wheelchair users

£5 per person

Saturday 25th July

10.30am – 12.30pm

Butterfly Hunt

Join one of our Rangers on a butterfly stroll, to see how many species we can find today. You will also learn the basic survey and identification skills needed to take part in Butterfly Conservation Big Butterfly Count. To complete the event you will make a butterfly feeder which you take home and hang in your garden.

Phone 01623 823202 to book a place.

£3 Adults,

£1.50 children

Edwinstowe Allotments

The Parish Council is the principle tenant of the allotments at Ollerton Road and Boy Lane. Readers may recall the Parish Council took over the administration of the Ollerton Road allotments to sort out some of the ongoing problems. A working group of Parish Councillors and allotment holders have been meeting over the past few months to draw up a fair set of rules and waiting list. Vacant plots have been filled as several new allotment holders have started in time for the new growing season.

Chairman of the allotment working party, Councillor Chris Ayre said, "I'm really pleased we've managed to get the problems sorted out and I'm delighted new allotment holders have taken on plots, including women and younger people. All the plots are now filled and it's great to see the enthusiasm of the allotment holders. People enjoy the peace, the healthy outdoor activity and the satisfaction of growing their own vegetables and fruit. We've received a lot of really positive feedback from allotment holders which is pleasing."

If you would like to have an allotment, please contact the Parish Council Office and get your name placed on the waiting list.

Handsome, Healthy and Happy

Free vaccination*

when you join The Healthy Pet Club,
plus many more fantastic benefits

saving you over **£200****



For more information contact:

BRIDGE HOUSE VETS

Tel: 01623 621019



*Minimum 12 month membership, early cancellation will require full payment of £90 vaccination fee.

**Based on cost of purchasing these benefits separately (taking average prices charged across a sample of CDS practices) would result in an average annual savings in excess of £200. Benefits, costs and savings vary depending on the type and size of your pet.

Edwinstowe Leisure Painters and Edwinstowe Flower Club Exhibition 2nd-3rd May 2015

I think that we had the best joint exhibition ever this year.

All the pictures and complimentary flower displays were very effective, and it is a pity that more people didn't make it over to see them. We have some very talented artists these days, and the special theme pictures of the same view, showed off the great diversity of approach. The best view from Cat Bells corner was by popular vote an acrylic painting by Barry Knight.

Congratulations Barry, I must confess that I would have been hard pressed to settle on a winner as a judge. We had a Tombola, book stall and plant stall and some first class home baked refreshments and I can only thank everyone who put so much effort into making our weekend so brilliant.

A small profit was made over the event and our funds will help to subsidise a painting and gallery visit or two in the near future. Anyone interested in joining our Edwinstowe leisure painters, Mondays 2-4pm, our fees are £5.00/class.

Please contact Graham on
Tel.01777870588.Thank you

Edwinstowe's County Councillor, John Peck recently attended a meeting of the 1st Edwinstowe Guides and presented them with a cheque for £200 from his Divisional Fund to help them buy new equipment John said,

"I think the Guides are a great organisation and do some excellent work with young people.

We are lucky to have a really good group in Edwinstowe, run by dedicated volunteers and I'm very pleased I've been able to help them."

Mi Groomers 

**10% off
for all
Healthy Pet
Club Clients**

**MiGroomers Open within
Bridge House Veterinary Surgery**



To book an appointment call

Bridge House Veterinary Surgery
Sherwood Hall Road, Mansfield, Nottingham, NG18 2NH
Tel: 01623 621 019
Monday to Friday 8:30 - 18:30 - Saturday 8:30 - 10:00

www.migroomers.co.uk

£200 Presented to the Guides



**PETER WARD
SOLICITOR**

TURNER ATKINSON & WARD
SOLICITORS

23, HIGH STREET EDWINSTOWE NOTTS NG21 9QP

TEL 823450

FAX 823456

TURNER ATKINSON & WARD OFFER
A FULL RANGE OF CONVEYANCING
SERVICES, PREPARATION OF WILLS,
AND ADVICE AS TO PROBATE

APPOINTMENTS ARE AVAILABLE AT
SHORT NOTICE AND HOME VISITS ARE
MADE UPON REQUEST

WE ARE AUTHORISED AND REGULATED BY THE
SOLICITORS REGULATION AUTHORITY
REGISTRATION NUMBER 101320



Thoresby Colliery closes end of coal mining in Nottinghamshire

The expected announcement to close Thoresby Colliery has been made, despite last minute appeals to keep it open until the remaining coal is exhausted. Six hundred jobs have been lost in the County, a blow to Nottinghamshire's economy. Around thirty of the miners lived in Edwinstowe, although at one time, hundreds of men in the village worked at the pit. In its heyday, Thoresby was a record breaking producer of coal in the UK.

The closure brings to an end, ninety proud years of coal mining in Edwinstowe and ends deep coal mining in Nottinghamshire, as Thoresby is the very last colliery in the County. At the May meeting, the Parish Council expressed their regret at the premature closure and their concern at the effect on the local economy. Councillors felt it made no sense, when coal would still be imported to fuel the country's coal fired power stations.

The Parish Council discussed whether an event could be organised to mark the closure. Also, they wanted to find out what was going to happen to the half winding wheels at the colliery entrance, as Councillors felt it was important to keep a visible memorial to the mine. After the meeting, Parish Council Chair, Celia Brooks said, "in many ways, it's a sad day for Edwinstowe. All pits become exhausted, but Thoresby had a few years to go. On behalf of the Parish Council, I want to pay tribute to all the proud men who worked at Thoresby, especially those who lost their lives or who were injured or suffered industrial disease doing such an important but dangerous job. It is important we keep the memory alive, because the colliery has been such a part of the village for ninety years and so many families have connections to mining."

KEY BUILDING SUPPLIES LTD

FOR ALL YOUR BUILDING & LANDSCAPING NEEDS...



STOCK READY FOR SPRING/SUMMER...

Growbags, manure, compost, bark, top soil, garden equipment, decorative gravels, paving, block, paving, decking, trellis, fencing, posts & plinths, path edgings, copings, pier caps, BBQ gases & charcoal, rockery stone, railway sleepers plus many more products coming soon...

Stockists of blocks, bricks, cement, aggregates, plasters and boards, lintels, roofing materials, UPVC fascia's, all sheet materials including plywood, m.d.f etc, studding, skirting, door frames, R.S.T, P.S.E, house coal, smokeless fuel & logs.



Come and have a look around our on-site shop, it's now fully stocked with everything you could need. Our ranges are plumbing and electrical fittings, building additives and adhesives such as silicone, no nails and sealants. Screws, nails and fixings, tools, paints, stains and varnish, PPE and work wear. We are very competitively priced & offer advice and estimates free of charge...



KEY BUILDING SUPPLIES LTD
ROAD C,
BOUGHTON INDUSTRIAL ESTATE,
BOUGHTON,
NEWARK, NOTTS,
NG22 9LD.

Tel: 01623 861735

keybuildingsupplies@hotmail.co.uk

www.keybuildingsuppliesltd.com

Brick cutting service, also brick slips & arches: www.keybrickcutting.com

Edwinstowe's Helping Hands celebrated St Georges day and VE day!

We had over 30 pensioners join us for our luncheon club held every Thurs at Lynds Close community centre 12-2pm home made three course meal for just £3!

We are all going on a trip to Skegness for the day on the 18th of June and also treating the pensioners to fish and chips! We have fundraised to pay for the trip with our medium night, the duck race which made £300.

We have had £200 from the Parish Council to help to pay towards this day out for the pensioners of Edwinstowe so we would like to thank the Parish Council from the bottom of our hearts we are very grateful for your help and continued support!

The photos are of Sue Howells and Anne Bungay dressed up for St Georges Day the centre celebrating VE day and the volunteers dressed in VE day wear.





S & E TIMBER



SUMMER HOUSES
DOG KENNELS
WENDY HOUSES
CHICKEN COOPS
RABBIT HUTCHES

SINCE 1980
HEAVY DUTY BESPOKE
SHEDS/KENNELS
MADE TO MEASURE

Heavy Duty Fence Panels
Oriental Garden Features
Garden Trellis

Skirting/Architrave
 • Handrails • Dado Rail
 • Door Casings • Shiplap

Heavy Duty Fence Panels, Concrete Posts & Plinths

All Planed and Rough Sawn Timbers

Decking Kits
 10' x 10' – £170
 12' x 12' – £250

SLEEPERS!
 – New & Reclaimed



Natural Sandstone Paving –
 Patio Packs from £17.50sq/m

• Matchboard • Floorboards
 • T & G Cladding • Loft Insulation • Beading

• Wide Range of Plywood • Chipboard
 • Eliotis • Plaster Board • M.D.F.

UNIT 45, TRENT ROAD, BOUGHTON INDUSTRIAL ESTATE SOUTH
 Telephone: 01623 861364
OPEN:- 8am – 5pm Mon-Fri; 8am – 3pm Saturdays

Stockists of
PICNIC TABLES &
GARDEN BENCHES

The Robin Hood Railway Line extension campaign

The big question for Edwinstowe is will the proposed extension of the Robin Hood Line to Warsop, Edwinstowe and Ollerton actually happen and will we see Edwinstowe station restored to its former glory? Edwinstowe's County Councillor, John Peck has been campaigning to reopen the line and believes that with the closure of Thoresby Colliery, an urgent decision needs to be made one way or the other. John has been lobbying hard and has the backing of Edwinstowe Parish Council and Councillors from Warsop and Ollerton. The main candidates in the recent general election, including the re-elected MP Mark Spencer, also came out in support of the campaign.

The train company recently laid on a passenger train and leading County Councillors, including John Peck and senior train company staff did a test run from Nottingham Midland Station, stopping at Warsop, Edwinstowe and Ollerton. Anyone who noticed, might have been surprised to see a passenger train passing through Edwinstowe instead of the usual coal train! The purpose of the journey was to test the track for passenger trains.

John said, "It was a great experience to ride a passenger train into Edwinstowe and stop at our station, which is still in remarkably good condition. It's a proper Victorian station, built in 1896 at the same time as the nearby Dukeries Hotel. It would be brilliant to see trains stopping at Edwinstowe again. There is a way to go yet though. At the moment, I think it's 50/50 because the finances have to stack up. I do think we are getting closer to a decision though and I will continue to make the case for the Robin Hood Line extension at every opportunity."

John explained that the County Council has commissioned the train company to carry out a feasibility study. It is the County Council who will have to put in the investment as they did with the existing Robin Hood Line and they will need to be convinced about the finances before committing themselves. John added, "I know there is strong support in the village for the proposal and I would love to see the line opened for passengers. I will keep pushing as hard as I can but I accept that these are difficult times financially, so I just hope this feasibility study gives us the right answer. One way or the other, I'm hoping for a decision soon."

Edwinstowe's Echium Extravaganza

In May, many people travelled to Edwinstowe from as far away as Birmingham, Staffordshire and Peterborough. The reason? A unique opportunity to see a brand new garden at Edwinstowe House showcasing 26 varieties of spectacular Echiums and the only specialist Echium garden in the UK.

The garden, open for the first time this year after a major redesign and make-over of a neglected modern courtyard in the business centre at Edwinstowe House, is based around the original Edwardian house.

The exciting, challenging project was undertaken by local specialist growers Linda and Ray Heywood of Echium World.

People are amazed that the plants are grown locally here in the village when they are more likely to be seen growing in Devon and Cornwall and on the Isles of Scilly.

The garden has a really good feel and several visitor's comments endorsed this. "Excellent garden, lovely people, lots of helpful advice - Well worth the drive of 50+ miles! - A nice space to entertain and let folks see this great plant!"

The garden can still be viewed by appointment and group visits can be arranged until the end of the summer.

Following the success and feedback from visitors the next step is to launch the Edwinstowe House Gardening Club



where keen gardeners can meet, share knowledge, and generally talk all things gardening on a regular basis!

Interested? Then come along to the first gardeners' gathering at Edwinstowe House on Wednesday 30th September 6 - 7.30pm (free for the initial session).

For further details please contact Linda Heywood: Email echiumworld@gmail.com.

Tel 07957 602073 Or visit www.echiumworld.co.uk

Group from Nottingham Invades Parish Council Meeting - Police Called

The April meeting of the Parish Council received some unwelcome visitors from Nottingham who burst into the meeting and proceeded to disrupt the meeting with constant heckling.

One was wearing what appeared to be a police uniform, with "metropolitan peace" on the badge and a mask on his arm.

They were extremely intimidating and abusive to Councillors and members of the public. The police had to be called as the meeting could not proceed. Celia Brooks, Chair of the Parish Council said, "It's appalling that this group seem to travel around the country, attending Council meetings and intimidating law abiding Councillors and members of the public for no obvious reason.

They have nothing to do with our village. Decent people in Edwinstowe who know about this are rightly shocked and appalled. Parish Councillors are long standing residents of the village, who are unpaid volunteers and are democratically elected by Edwinstowe residents to look after the village."

The question is, what brings them to Edwinstowe? They haven't picked on Edwinstowe by chance. It appears they have been encouraged to come here by an Edwinstowe resident for reasons which aren't clear. The group came again to the May meeting but the Parish Council managed to complete the business. Several members of the public who attended were clearly not happy with the "invaders" and let their feelings be known in no uncertain terms!

Edwinstowe Parish Council welcomes local residents to their meetings and there is a slot allocated for Edwinstowe residents to put points to the council on Agenda'd items.

Beat Surgeries at Parish Council Office

Thursday 25 June 2015 at 12 noon

Thursday 23 July 2015 at 11 am

Safer Neighbourhood Group Meetings

?? or where??

D.A Williams Electrical Contractor

REWIRES, SHOWERS, INTRUDER ALARMS
SECURITY LIGHTING
& GENERAL ELECTRICAL WORK UNDERTAKEN

TEL: 01623 836517
07719999781



80's disco!!!!

Come and relive the 80's

Fancy dress optional

Prizes for best dressed!

Friday the 26th of June

Upstairs function room @south forest,

7.30pm till late



Tickets just £7 each

includes chip butty!

Contact kristy -07588678989

Or ask at south forest reception



The Royal British Legion Branch of Edwinstowe

THE ROYAL BRITISH LEGION

Are pleased to announce that as of last week we are now back to full status, as opposed to a sub branch of Warsop branch, this is due to the hard work put in by our members. we will continue to have our meetings at the Manvers Arms on the 3rd Wednesday of each month ...

Thanks to all concerned. Dave



Major Oak Music choir

The Major Oak Music choir is an adult pop choir exclusively for Ladies, singing popular chart hits old and new. You don't necessarily need any previous singing experience to join, and if you can't read music then that's no problem either! The aim is simply to share the pleasure of singing together and to have a good time



doing so! The best thing is that research has shown that singing in a choir is good for your well-being and by joining the Major Oak Music choir you will have an amazing opportunity to meet other people too!

Based in Edwinstowe, Nottinghamshire, the choir is directed by Pauline Daghish, who has worked with a wide range of musical ensembles in her career. Pauline is sure that there must be lots of women who, like her, enjoy releasing their inner diva when singing along to their favourite songs in the privacy of their own home. However, don't worry, because at the Major Oak Music choir, the choir mainly sings together as a group, so no-one will be asked to sing on their own if they don't want to!

The Major Oak Music choir rehearse on a Monday evening between 7 - 8.30pm in the Church Rooms, Mansfield Road, Edwinstowe. Already, there are over 30 members, but if you would like to join, it's not too late! Simply come along to one of our rehearsals where new members will always be welcome. Each weekly session costs just £4.00.

To find out more, please visit www.majoroakmusic.co.uk

ABS Tiling and Plumbing

01623 822350 07771 794037

My team specialises in Bathroom and Wet Room installation. We can manage the project from the planning stage onwards, supply the stock or simply come in to fit your new suite and tiles.

You won't need to bother finding traders with the skills required to complete your bathroom, we have qualified craftsmen for planning, surveying, tiling, plastering, joinery, plumbing and electrical work.

We install level access Wet Rooms to NSDC approved standards for customers with mobility and access problems. We can also advise whether your wet room qualifies for full or partial exemption to VAT if you are disabled.

Of course we also install luxury high specification Wet Rooms at prices that can be significantly less than a bath/shower combination.

Traditional bathrooms are usually installed within 5 days and we never leave you without a loo!

Call now for first class service from a local business offering:

- Free quotation, planning and survey (regardless of the number of meetings needed)
- Installation costs are half those of leading DIY retailers
- Tiles and suites from leading suppliers charged to you at the trade prices available to me
- Removal of all waste at the end of every day
- You pay when the job is complete and you are completely satisfied
- Two year workmanship guarantee

I don't have a website I live in Edwinstowe! Come and see me at 20 High Street where I can show you examples of my work. I can come to if you call either of the numbers above.

Kettlewells

7 July 5 Days	LLANDUDNO SUMMER BREAK	£320
18 July 8 Days	EASTBOURNE	£510
29 July 8 Days	RHINE VALLEY INC RIVER LIGHTS CRUISE	£665
8 Aug 2 Days	NATIONAL TRUST WEEKEND - CHARTWELL	£145
17 Aug 5 Days	TORQUAY SUMMER SIZZLER - FREE BAR	£307
24 Aug 5 Days	WEYMOUTH	£295
6 Sep 5 Days	SCARBOROUGH	£300
14 Sep 5 Days	BOURNEMOUTH - TITANIC STORY & ISLE OF WIGHT	£360
2 Oct 5 Days	LETCWORTH - STRAWBERRIES & STEAM	£246
10 Oct 2 Days	SETTLE & CARLISLE RAILWAY	£118
20 Oct 5 Days	LLANDUDNO - HOLLY & MISTLETOE	£312
9 Nov 5 Days	ST ANNES-ON-SEA - TURKEY & TINSEL	£280
16 Nov 5 Days	TORQUAY TURKEY & TINSEL	£285

DAY EXCURSIONS

Thur 25 June	NATIONAL TRUST - HANBURY HALL	£17	£16.50
Sat 27 June	LEEDS SHOPPING	£12	£11.50
Sat 27 June	THE NATIONAL MEMORIAL ARBORETUM	£11	£11
Sat 28 June	CASTLE HOWARD INC FLOWER FESTIVAL	£26	£25.50
Wed 22 July	HARRY POTTER STUDIO TOUR	£53	£43
Sun 26 July	RHS TATTON PARK FLOWER SHOW	£39.50	£39
Wed 29 July	NAT TRUST SUDBURY HALL & MUSEUM OF CHILDHOOD	£17	£16.50
Mon 17 Aug	DRAYTON MANOR PARK HOME OF THOMAS THE TANK	£32.50	£32
Sun 27 Sep	YARDALE - FESTIVAL OF CREATIVITY - SKIPTON	£13.50	£13

GIFT VOUCHERS AVAILABLE

CHECK OUT OUR WEB SITE
WWW.KETTLEWELLSCOACHES.CO.UK
FOR ALL 2015 HOLIDAYS

THEATRE TRIPS

AD SC CH

Sun 22 Nov	THURSFORD CHRISTMAS SPECTACULAR	£52 All One Price
Sun 22 Nov	DISNEY ON ICE SHEFFIELD	£37.50 - £37
Sun 29 Nov	BIRMINGHAM INTERNATIONAL TATTOO	£42 - £40
Wed 2 Dec	THE GIRLS - LEEDS GRAND THEATRE	£49.50 All One Price

Tel: 01777 860360

Email: Fax: 01777 710351
Info@kettlewellscoaches.co.uk

Heritage Lottery Fund Grant For Edwinstowe Archive Project

Edwinstowe Historical Society has been awarded a grant of £10,000 from the Heritage Lottery Fund to enable us to establish a Community Archive Centre in Edwinstowe House. The grant of £10,000 will help us make full use of the room, kindly given to us by David Woodhead, the Chief Executive of Nurture Enterprises Ltd.

In a planned project over the next 18 months, the group intend to train members in the use of digital technology to enable us to catalogue, archive and make more readily available the wealth of material that we hold, to a wider audience.

The creation of a Community Heritage website will enable schools, groups and individuals to access our extensive collection of resources ensuring the local past of our village is not lost. Our Chairman, Di Roker, commented, "I am absolutely delighted that we have managed to secure this lottery grant and I'm extremely grateful to Shirley Moore and her team who have worked so hard on the project. We have been aware for some years that our methods of storage and conservation were becoming increasingly outdated, but lack of funds prevented us from addressing the issue.



When David Woodhead kindly offered us a room in Edwinstowe House, it felt like the beginning of a new era, and now the Lottery grant will enable us to update all aspects of the work we do and to give the public greater access to our archives through a newly designed website. **Here's to the future!**

The Parish Council

There are eleven Parish Councillors, all of whom live in Edwinstowe. They are elected every four years. Council meetings are held on the second Tuesday of each month (except August and December). They are held in the Village Hall. The public are welcome to attend and registered electors are allowed to ask questions in the public participation time.

The Parish Council take their responsibilities very seriously and make decisions which they believe are in the best interests of the village. Councillors can be contacted for help or advice by ringing the Parish Office or by meeting some of them at the "open air surgery" on the High Street (first Saturday of every month from 10 am to 12 noon).

Meet Your Local Councillors:



Cllr Celia Brooks - Chairman



Cllr Dennis Tattersall - Vice Chairman



Cllr Chris Ayre



Cllr Michael Brown



Cllr Josie Cocking



Cllr Paul Peacock



Cllr Terry McLaughlin



Cllr Liz Benson



Cllr Karen Peck



Cllr Barbara Starbrook



Cllr John Peck

Meet The Parish Workers:



Andrew Mellors



Paul Darrington



David Stocken

The day to day running of Parish is the job of the Parish Clerk Alice Dunn, who is supported by the Administrator Nicola Priestley. If you ring or come in to the Parish Council Office it will be Alice or Nicola who will help you out.

You will see our staff around the village: David, Andy, Gary and Paul (who mostly works in the cemetery). They do an excellent job looking after the village and take great pride in their work.



Gary Kirby



Alice Dunn

Nicola Priestley

EGMANTON PLANT HIRE & TOOL HIRE

TELEPHONE / FAX : 01777 872316 MOBILE 07971627588

Your Local Friendly Service Meeting Your Plant Hire Needs

<u>BUIDING EQUIPMENT</u>	<u>£ Day</u>	<u>£ / Week</u>	<u>PLUMBING</u>	<u>Per Day</u>	<u>Per Week</u>
Mini Digger	50.00	200.00	2" Petrol Water Pump	10.00	35.00
Skiploading Dumper	40.00	120.00	2" Petrol Water Trash Pump	10.00	35.00
Electric Mixer (inc. barrow & shovel)	7.50	20.00	2" Submersible Pump 110v.	10.00	35.00
Compactor Plate	10.00	35.00	Pipe Freezer 110v	20.00	40.00
Trench Rammer	15.00	45.00	Drain Rods	5.00	10.00
Bomag Pedestrian Roller	20.00	60.00	Drain Unblocker		3.00
Bentford Ride on Roller	40.00	120.00	Stilsons		2.00
Bosch Grinder 230mm 110v	10.00	35.00	<u>SITE ELECTRICAL</u>		
Stihl Stone / Steel Saw 12"	10.00	35.00	Petrol Generator 4 KVA Dual Voltage	15.00	40.00
Floor Saw 14"	15.00	50.00	Petrol Welder 200amp	25.00	60.00
Petrol Clipper Saw Bench	15.00	50.00	Transformer 3 KVA	3.00	10.00
6m Bull Float	10.00	40.00	Festoon 110V	5.00	10.00
Concrete Poker	15.00	40.00	Plastering Light 110V	7.00	15.00
Block Splitter	12.00	30.00	<u>DECORATING</u>		
Builder's Trestle		3.00	Tile Cutter 110V	15.00	40.00
Banded Boards		2.00	Wallpaper Stripper 110V	5.00	15.00
Acro Props		2.00	Dehumidifier	15.00	40.00
Strong Boy Attachment		4.00	Floor Sander	15.00	40.00
Turbo Roofing Torch Kit	10.00	20.00	Edge Sander	15.00	40.00
Roof Ladder 18ft.	10.00	20.00	<u>GARDEN & HORTICULTURAL</u>		
3 Stage Ladder (30ft)	10.00	20.00	Petrol BHP Rotavator	20.00	60.00
<u>DRILLING & BREAKING</u>			Petrol Shredder / Chipper	30.00	120.00
Towable Compressed Air Breaker	25.00	80.00	Petrol Scarifier	14.00	40.00
Hydraulic Breaker	20.00	60.00	Petrol Turf Cutter	20.00	45.00
Two stroke Petrol Breaker	20.00	60.00	Petrol Strimmer (inc line or blade)	12.00	35.00
<u>ELECTRIC 110 Volt</u>			Petrol Hedge Cutter	12.00	35.00
Bosch SDS Plus Light Breaker	7.50	20.00	Petrol Lawn Spiker.	20.00	40.00
Bosch SDS Max Medium Breaker	11.00	30.00	Petrol Lawn Sitter	20.00	40.00
Bosch Heavy Breaker	14.00	40.00	Gas Flamed Weed Gun	10.00	20.00
Bosch SDS Plus Drill	7.50	20.00	Post Hole Borer 4"6"10"	20.00	60.00

All electrical 110V equipment comes with Transformer & RCD

VAT to be added to all items

The Dukeries Singers

We have only one performance to fulfil to complete our Summer schedule. This is on Saturday 4th July at St. Chad's Church in Pleasley Vale.

We perform here every year and it is so enjoyable, it's like returning to an old friend and usually it is a beautiful, balmy Summer evening.

This lovely wooden Church is in a most idyllic valley setting with wild flowers and trees and the sound of the river bubbling along.

The choir will have a short break from rehearsal on the 19th. and 26th. of August and apart from those two weeks rehearsals continue as normal.

We shall begin preparing our Autumn and Christmas programmes in JULY, so think of us whilst you water the garden, enjoy a barbecue or take a leisurely stroll on a pleasant Summer evening.

We shall have "In The Bleak Midwinter" spot on by December!

We have so enjoyed all our different performances in such variety this year and our audiences have been so appreciative of our efforts.

We love to sing and entertain and hope we are able to transmit our enjoyment to all the groups we have visited.

If you wish to make a booking, our Concert Secretary Phil is available on 01623 822070.

We would be delighted to hear from you.

Jan

One Hour Parking on the High Street

You might have noticed the waiting restriction on the High Street has recently changed from half an hour to one hour. Edwinstowe's County Councillor, John Peck managed to obtain the change after presenting a petition from residents and businesses. John said: "I'm pleased the change has

been made, because it means residents and visitors have a little more time on the High Street if they're visiting several shops. It should also help trade. People still need to watch the time though, as the traffic warden does visit the village regularly."



Advertising Charges

**Place an
Advert**
in the next edition

Business card sized advert - £25

1/4 page advert - £50

1/2 page advert - £75

Full page advert - £100

Inside front or back cover / full page - £200

Outside back cover / full page - £225

New Children's Play Area on Jubilee Park

The Parish Council has installed the promised new play equipment on Jubilee Park and it's proving very popular with young children. There is a lot more equipment there for the children and additional picnic tables have been installed so families can enjoy the park. An orchard has also been planted in one corner of the park by the Sherwood Forest Trust, so as the trees mature and bear fruit, villagers can enjoy the apples and pears. The skate park is still well used by youngsters of all ages and some of them are really developing their skills.

Chairman of the Parish Council, Councillor Celia Brooks said: "The Parish Council has been clear from the start that the former

Rufford School playing field should remain as a community facility and be a family park for all ages. We're looking to make improvements all the time and we're really pleased we've been able to improve the children's play area, to add to our very popular skate park. If you've got young children, do take them down to try out the new equipment."



FIBRE OPTIC BROADBAND IS HERE Edwinstowe and Kings Clipstone



We are pleased to confirm that 11 cabinets within the Edwinstowe Exchange area (which includes Kings Clipstone) are now fibre-enabled, (with more to come between now and March 2016) bringing a more resilient reliable and faster internet connection to anyone who chooses to upgrade to fibre. Remember – the upgrade to fibre isn't automatic. You need to contact either your existing ISP or research what offers are available from other Internet Service Providers.

Whatever you do on the internet requires information to go to and from your computer. This information reaches your computer via broadband. Broadband is a connection to the internet that is always on, the better the quality of broadband the better the internet experience is.



Fibre-based broadband is the next generation of broadband - much faster, more reliable and it uses a different technology. Whilst traditional broadband is delivered via copper telephone lines, fibre-broadband incorporates a fibre-optic cable in the link between the customer and the 'exchange'. Fibre-optic has less interference, keeps the signal strength over much greater distances and operates at a higher frequency. Higher frequency means greater bandwidth meaning you can do much more.

To find out more about the programme and to check your post code please visit:
<http://www.nottinghamshire.gov.uk/living/business/broadband/where-and-when/>

To find out how upgrading to a fibre-optic broadband service can benefit you, your family or your business please visit us as:
<http://www.nottinghamshire.gov.uk/living/business/broadband/what-can-fibre-broadband-do/>

'Like' us on Facebook where we provide additional information and share interesting stories:
www.facebook.com/nottinghamshirebroadband

Nottinghamshire Digital Champions' Network (NDCN)

Can you send an email? Can you spare some time to help someone in your community get online? Can you help people set up email accounts and surf the net? Can you be the next Digital Champion? If so, why not register to become a Digital Champion?

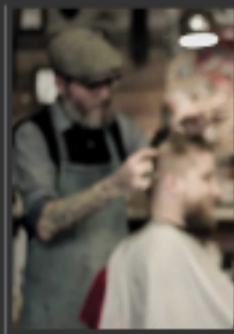
<http://www.digitalchampionsnetwork.com/class/nottinghamshire>

Fella'z BARBERS

Modern and Traditional Styles Welcome

Opening Times

Mon: 9:00 til 5:00
Tues: 9:00 til 2:00
Wed: 9:00 til 5:00
Thur: 9:00 til 5:00
Fri : 9:00 til 6:00
Sat: 8:30 til 2:00



(Open 6 Days A Week)

Find us on FaceBook
facebook.com/fellazl

**40 High Street, Edwinstowe
Next To The Robin Hood Statue**

NEWS FROM YOUR LOCAL TOURIST INFORMATION



Summer is here at long last – Are you looking for ideas of where to go for that special weekend or maybe a holiday with the children or just something to fill in that spare time to get out and about?

Call into our office and see our vast display of brochures and pamphlets varying from a break in Northumberland to a local event in Sherwood Forest National Nature Reserve! Here are just a few of forthcoming events in the summer months:-

Living History Weekend

Please note, that although details of events are correct at the time of going to press, it is always advisable to telephone in advance to confirm details. The Tourist Information Centre at Rufford Country Park is open daily 10.30am-4.30pm with free parking at the Abbey end for 20 mins (as £3 parking charge applies). You can leave a message on our answer phone and we will reply to you the following morning. Tel: 01623 824545. Alternatively you can email us at sherwoodtic@nsdc.info or visit our website www.newark-sherwooddc.gov.uk

June

26-28th Earth & Fire Potters Fair Rufford Country Park
27th Glow Worm Walk Sherwood Forest Country Park

July

5th Brass Band Sunday Rufford Country Park
11th Bat Walk Sherwood Forest Country Park
25 & 26th Victory Days Newark Air Museum
29th Graft, Gruel & Good for The Workhouse, Southwell Nothings

August

3-9th Robin Hood Festival Sherwood Forest Country Park
15 & 16th Medieval Forest Life Sherwood Forest Country Park
29-31st Living History Camp - Sherwood Forest Country Park

The Falchions

27-31st Southwell Music Festival Various Venues in Southwell

September

12 & 13th Major Oak Woodland Festival Sherwood Forest Country Park
26 & 27th 'On The Home Front' – 1940's Rufford Country Park

Are you aged 14 – 18 years old and up for a challenge?

Edwinstowe scout group has a newly opened Explorer scout section. So what do we do in the explorer unit?

We continually look for new and exciting activities this can be anything from abseiling, gliding, hill walking, survival skills and rock climbing the list goes on.

We fundraise, go on camps, join up with other explorer units from across the district and further afield and have a good time.

Joining the explorer unit you will also get to work towards achieving the Duke of Edinburgh award.

If you have never been in scouts before come and have a go, if it is good enough for Bear Grylls it must be good. If this sounds of interest to you and you have the commitment then come and see us.

Explorers meet on Friday nights between 7 – 9 pm pop in and ask for Buzz.

Edwinstowe scout group.
Beavers meet Monday 5 - 6pm.
Cubs Monday 6-7.30 pm both at the village hall. Scouts and Explorers meet at the Church Rooms Friday nights 7 - 9pm.

Contact Sue on:
01623 823761.

High Street, Edwinstowe

01623 825062

Find us on Facebook



- Fully licensed
- Most work undertaken
- Bespoke designs
- Walk in slots available

info@tattoosbysugar.co.uk www.tattoosbysugar.co.uk



Car Tax – Don't Be Caught Out

DVLA clamping and fines have risen dramatically since October 2014. When you buy a vehicle now, the vehicle tax does NOT transfer with it. You will need to ensure the vehicle is taxed immediately or you may receive an automatic £80 penalty AND the vehicle could also be clamped.

Fed up with Spam Texts?

You can report spam texts directly to your mobile phone provider. All operators now use 7726 as the short code to report spam texts, free of charge.

Outreach Service Opening Hours:

- Monday: Bilsthorpe (The Surgery, 35 Mickledale Lane) 9:30am-12:30pm
- Tuesday: Clipstone (The Health Centre, First Avenue) 10:00am-12:30pm
- Wednesday: Blidworth (Blidworth Surgery, 59 Mansfield Road) 10:00am-1:00pm
(Please Note: The second Wednesday of each month the Service finishes early at 12 Noon)
- Friday: Southwell (The Old Court House, Burgage) 10:00am-12:30pm

Or contact: Nottinghamshire Advice Line
(0844) 856 3411 or (0300) 456 8369 from a mobile
Monday to Friday 10.00am – 2.00pm

Worried about Debt or your finances generally? Citizens Advice has specialist advisers and can help.

All advice and help is free, confidential and impartial.

Just drop in for a chat with an adviser.

For information on the above or advice on any subject, visit your local Citizens Advice Bureau at:

- NEW OLLERTON (5 Forest Court) NG22 9PL
Monday, Wednesday & Friday: 9.30 am – 2.30 pm
- NEWARK (Keepers Cottage, Riverside Park, Great North Road) NG24 1BL
Tuesday & Thursday: 9.30 am – 2.30 pm

ABBEY ROAD ART AND CARD GROUP

We are at the moment deciding where we would like to go for an outing in the Summer. Last year we had lunches out in local restaurants and also catered for ourselves on two occasions and so decided to have a change this year and organise an outing by coach.

And so, in July, we will be off on a mystery outing and no, although I have organized it, I don't know where we will arrive at either!

Our numbers remain steady with both artists and card makers continuing to produce a high standard of work and enjoying the social side of the group, exchanging ideas, giving useful tips to each other and exchanging allsorts of useful information.

Our meetings still start at 1pm and finish at 4pm approximately – no hard and fast rules apply – if you would like more information, just ring 825518 and ask for Barbara.

MHS Labour Provider Limited

We are a local family run business with over 25 years experience in supplying labour to farms and factories etc

“No job to small”

If we can help you with any labouring needs please call Kevin Spiers on:
07872933905
01623 869722
info@mhslabourproviderltd.co.uk



How would you cope (or a relative/friend) if you had a stroke or serious accident, or simply couldn't manage your affairs anymore?

How would your bills be paid? – you may be the only person who can access your money to pay your electricity bill / mortgage / care fees etc.

Who would decide how you are cared for or where you should live? You might need to manage someone else's affairs because they:

- * are ill or disabled, either temporarily or long-term
- * are out of the country for a while
- * are unable to make decisions for themselves, eg because of mental illness

A letter to the bank or becoming an agent/appointee to deal with someone's welfare benefits may be all that is needed.

A Power of Attorney is simply a document that can be set up by a person to appoint a trusted relative or friend who would help to look after their affairs in the future (financial and/or health and welfare), if it became necessary. Alternatively, it can be set up to be effective immediately. It can avoid lots of future problems.

Important note – a Power of Attorney can only be made whilst the person making it understands what they are doing, ie they have "mental capacity". For older people, it can be as important as making a will.

For information on the above or advice on any subject, visit your local Citizens Advice Bureau at:

NEW OLLERTON (5 Forest Court) NG22 9PL
* Monday, Wednesday & Friday: 9.30 am – 2.30 pm

NEWARK (Keepers Cottage, Riverside Park, Great North Road) NG24 1BL
* Tuesday & Thursday: 9.30 am – 2.30 pm

Outreach Service Opening Hours:

Monday: Bilsthorpe (The Surgery, 35 Mickledale Lane)
9:30am-12:30pm

Tuesday: Clipstone (The Health Centre, First Avenue)
9:30am-12:30pm

Wednesday: Blidworth (Blidworth Surgery, Mansfield Road) 10:00am-1:00pm

Please note: The Second Wednesday of each month the Service finishes early at 12 Noon

Friday: Southwell (The Old Court House, Burgage)
10:00am-12:30pm

Or contact: North Notts Advice Line
(0844) 856 3411 or (0300) 456 8369 from a mobile
Monday to Friday 10.00am – 2.00pm

**More generally,
a POWER OF
ATTORNEY could
be the answer.**

For detailed advice: check
www.adviceguide.org.uk or
www.gov.uk/power-of-attorney or
telephone the Office of the Public Guardian
0300 456 0300

M.H. SERVICES

"Over 20 years experience"

Patios & Drives

Fencing

Trees/Hedges

Drainage

For a tidy, reliable and friendly service, please contact Mark Hayden

Phone: 01623 824425

Mobile: 07725 649789

Email: mandshayden@aol.com



Alcoholics Anonymous In Edwinstowe

The first meeting of Alcoholics Anonymous in England was in 1947, and since then the organisation has expanded, so that there are now around 3,600 meetings each week in the UK, of which 55 are in Nottinghamshire, and, for the last 15 years, there has been one meeting each week in Edwinstowe.

Problems with alcohol affect all types of members of society, and can strike at any age, so Alcoholics Anonymous is a fellowship of men and women who share their experience, strength and hope with each other that they may solve their common problem, and help others to recover from alcoholism.

If you think you may have an issue with drink you are welcome to drop in to one of our meetings to find out about us.

Attendance at any of our meetings carries no obligations, and as AA is not affiliated in any way to any other organization, no details are ever passed on.

For many of us, the decision to attend our first meeting was the start of the road to a happier, more comfortable life without the pain and suffering alcohol brought us.

Details: AA meets in Edwinstowe every Wednesday night, at 1930, in the Methodist Church Hall, just off West Lane, opposite the fire station. For more information about AA, and details of other meetings locally,

see <http://www.alcoholics-anonymous.org.uk> or ring **08457 769 7455** to talk, in confidence, to a member of the fellowship.

citizens
advice
bureau

Pay and Work Rights

From 1 April, the ACAS helpline has expanded to deal with questions about:

- * the national minimum wage
- * working for an employment agency
- * working hours, rest breaks and holidays
- * agricultural workers' rights
- * working for a gang master

The Acas helpline number is 0300 123 1100

Remember that you can book a free appointment with Pension Wise (telephone or face to face) by contacting any Citizens Advice Bureau telephoning **0300 330 1001** via the Pension Wise website ~Local face to face appointments are currently available in Newark ~

For information on the above or advice on any subject, visit your local Citizens Advice Bureau at:

NEW OLLERTON (5 Forest Court) NG22 9PL
Monday, Wednesday & Friday: 9.30 am – 2.30 pm
NEWARK (Keepers Cottage, Riverside Park, Great North Road) NG24 1BL
Tuesday & Thursday: 9.30 am – 2.30 pm



ENJOY AN AFTERNOON OF INDULGENCE

Beaumont House invites you to a ladies afternoon...

AFTERNOON TEA
 FASHION SHOW
 DAMPER PARLOUR
 RETAIL THERAPY

Sunday 7th June 12.00pm - 5.00pm at Floral Media, Caunton

Tickets are £25 and includes entry, a glass of Pines on arrival, afternoon tea and a goody bag
An event to raise funds for Beaumont House

Book your place by calling 01636 610556 or visit www.beaumonthouse.co.uk
Registered Charity No. 120442



BEAUMOND HOUSE

Rainbow Run

Supported by

WEDNESDAY 17TH JUNE 2015
NEWARK SHOWGROUND

Registration from 6.00pm - run starts at 7.00pm

To book your place, please contact the Fundraising Team on 01636 61856
fundraising@beaumonthouse.co.uk or enter via www.beaumonthouse.co.uk/events
Registered Charity No. 120442

CELEBRATIONS AT KING JOHN'S PALACE, KING'S CLIPSTONE



The Sherwood Forest Trust is delighted to announce details of its exciting programme of events that will be taking place at King John's Palace this summer at Castle Field, King's Clipstone, near Mansfield. All these are free and open to all. The aim of our events is not only to tell the story and make the links between Sherwood Forest and the lead up to the sealing of the Magna Carta in June 1215, but also the history that follows on to the present day.

In partnership with Mercian Archaeology, Kings Clipstone Parish Council and supported by Newark and Sherwood District Council, we are organizing:

July 7 - 10 and 14 - 17 - Discover King John's Palace Archaeology Project.

Mercian CIC, national archaeological experts, together with volunteers will be leading this highly sensitive dig on the site to find out what lies beneath the surface.

We know that the Palace was a hugely important place where the Kings of England were entertained for more than 250 years, including King John and his Barons. Local primary schools will be visiting the site to learn about the heritage on their doorstep and its local and international significance.

Of course, a certain Mr R. Hood will be on hand to tell his version of events, and who knows what we might find!

July 11 and 18 - Discover King John's Palace Community Days

Building on the work done with the school, we have organized two open days for members of the public to come and visit the site and take part in what we are doing. Each day will be from 10.00 - 4.00 and there will be no charge.

As an added attraction we are organizing bus trips in a classic 1952 London Routemaster to take and return folks from Nottingham, Mansfield, Newark and Worksop. Further details and booking arrangements can be found on the Sherwood Forest Trust web-site: www.sherwoodforest.org.uk

Patrick Candler, Chief Executive of the Sherwood Forest Trust, explains:

Our programme of events won't just help put King John's Palace on the map and bring it to life, it will transform the Palace into an exciting place both for local people to visit and to attract more and more visitors to Nottinghamshire, helping to boost the local economy and support our rural communities.

It will provide a positive focus for people to be proud of where they live, and help them feel more connected to a common heritage.

The legend of Sherwood Forest and Robin Hood may be famous, but little has been done to tell the real story of this noble heritage forest, and King John's Palace is key to that story.

For more information visit:
www.sherwoodforest.org.uk
For Sherwood Forest Trust enquiries please call Patrick Candler on 01623 821490

EDWINSTOWE SOLDIERS

KILLED IN THE 1ST WORLD WAR

There are two names on the Edwinstowe War Memorial of men who died in 1915 and the 100th anniversary of their deaths will take place in August of this year. They both died serving in the Gallipoli campaign and are both remembered on the same memorial in Turkey.

Of all the varied parts of the world where British and Commonwealth forces were deployed during the First World War, Gallipoli was remembered by its veterans as one of the worst places to serve. It was the scene of some of the fiercest fighting of the war. Allied troops landed there in April 1915 and spent months on the small peninsula of land guarding the Dardanelles Straits in modern-day Turkey. The military aims of the campaign were not achieved and it was eventually called to a halt; the final Allied troops were evacuated in January 1916. There were heavy casualties, not only from the fighting, but from the extremely unsanitary conditions. Of the estimated 213,000 British casualties, 145,000 were from illness. Surviving combatants also recalled the terrible problems with intense heat, swarms of flies, body lice, severe lack of water and insufficient supplies.

We will be remembering them by ringing the church bells in their memory on Sunday August 9th and Sunday August 23rd.

Frederick Parsons was a private in C Company, 6th Battalion, Lincolnshire Regiment. On 7th August 1915 the 6th Battalion landed at Suvla Bay and the Division engaged in various actions including: The Battle of Scimitar Hill and attack on Hill 60. He died on 9th August 1915 aged 20. He is named on the Helles Memorial, Turkey. Frederick was a Farm Labourer Cowman. He was the son of John & the late Sarah Ann Parsons, of Mansfield Rd., Edwinstowe. His father, John was a Farm Labourer Cowman. Frederick had an elder brother, Harry, also a Farm Labourer Cowman and two younger sisters Ivy and Gertrude who were all born in Edwinstowe

Harry Rabbitt was a private in the 9th Battalion Sherwood Foresters (Notts and Derbys) Regiment. The Battalion landed at Suvla Bay on 7th August 1915 and engaged in various battles against the Turkish Army. He died on 21st August 1915 aged 22. He is named on the Helles Memorial, Turkey. Harry was a "Labourer in the Woods". He was born in Edwinstowe, son of Maria and the late Samuel Rabbitt of High Street Edwinstowe. His elder brother, Fred died later in the war at the Battle of the Somme in 1916. Harry had two further brothers, William, an Assistant overseer for the Poor Law Authority, and Archie a Painter Decorator and three Sisters Theresa, Ida and Ivy - all domestic servants.

Robin Hood Festival 2015

– Local Traffic Management Arrangements



Swinecote Road will be closed during the Robin Hood Festival, 3rd to 9th August 2015 to create a 'pedestrian only' zone on the section of the B6034 near to the cricket pitch, to enable safe crossing from the overflow car park to the main visitor site. This means that this section of the road will be closed to all through traffic, with the exception of access for Emergency Vehicles. It applies between the hours of 9.30am and 6.00pm daily for the duration of the Festival. In unforeseen circumstances this may be extended to 7pm (if needed). Diversion signs will be in place. We apologise for any

inconvenience caused by this temporary road closure, but we are advised by Police and Highways that this is the safest way to enable pedestrian road crossing during the event. In addition to these arrangements temporary parking restrictions will be in place on Paddock Close, Greendale Avenue, Royal Oak Court, Maythorn Grove, Newbury Close and Church St (additional no loading / unloading restrictions will apply to the section of Church St between the road closure & the cottages) to discourage non-resident parking and minimise inconvenience to residents living near

* Access to the cemetery, YHA, Craft Centre and Cricket Club from Edwinstowe will be unaffected. Service buses will drop off and pick up in Edwinstowe Village for the 7 days of the event.

to the forest during the festival. If you have any questions about these traffic management arrangements, please contact the Site Manager at:

Sherwood Forest Visitor Centre, Izi Banton, tel. (01623) 820335, or email izi.banton@nottsc.gov.uk or the Visitor Services Manager for the Country Parks Service, Linda Hardy, on (01623) 821328, e-mail linda.hardy@nottsc.gov.uk Your support and co-operation is appreciated.

Edwinstowe Hospice Support Group

A Big Thank You

It was with great pleasure that we held our 'Celebration Coffee Morning' in the Village Hall on Saturday 21st February where banners, balloons and archive photographs helped us to celebrate having given £100,000 to

the John Eastwood Hospice. We were pleased to be visited by Mrs Diane Humphreys, Hospice Trust Manager, who helped to distribute pieces of the celebration cake which had been baked and decorated especially for this event.

She also received, on our behalf, two major donations of money, one from the Young family in memory of Bill and one from Mrs Sue Stone. On behalf of the patients and staff of the Hospice Diane thanked all who had raised funds over the years including committee members, helpers and especially the supporters, a large number of whom attended the event. On top of all this the event itself raised £505!

Our Coffee Morning and Plant Sale took place Saturday May 16th in the Village Hall. With the weather on our side it again proved very popular raising £670. We also held a plant stall at the Echium Garden event on Saturday 23rd May at Edwinstowe House.

Our next Coffee Morning is on 21st November. Just a word about donations. I need to point out that any cheques given to us must be made payable to 'Hospice Appeal- Edwinstowe Support Group'. Our bank is becoming quite strict in its rules!

Phil Robinson

DRIVE REVIVAL REFRAME YOUR HOME

**THOUGHT YOUR OLD
DRIVE WAS PAST IT'S BEST**

WHY NOT LET US REVIVE IT.
WE CAN

CHEMICALLY CLEAN, RESAND, REPAIR,
SEAL AND MUCH MORE
TRANSFORMING YOUR OLD DRIVE
TO ITS FORMER GLORY.
BLOCK PAVING,
PATTERNED CONCRETE
AND ANY OUTDOOR AREA.

PLEASE PHONE JOHN ON
01623 824599 / 07976611308

Have fun at Edwinstowe Pre-school's Garden Party

Garden party Sunday 5th July 1 - 3pm Ticket £2.50 each family of 4 £8.00 includes Hotdog / Burger and a drink at the Village Hall.
Duck Race 4pm, Ticket available at Pre-school.

We'd like to thank everyone who supported us to raise funds. We're a charity and we couldn't continue without your support.

Edwinstowe Pre-school provides 'outstanding' OFSTED rated childcare. Baby & Toddler Stay & Play - Tuesday & Friday 9.30 - 11.00. Various activities for you and your child to enjoy in a relaxed, friendly atmosphere. Meet new friends whilst your little ones play. Snack and drink included.

Pre School Playgroup Sessions - Monday, Wednesday & Thursday. For children aged 2 and over. A playgroup allowing children to grow and learn whilst playing in a relaxed and friendly environment under the supervision of highly qualified staff.

Forest Sessions - Tuesday & Friday 9.00 - 12.00 or 12.00 - 3.30 (Friday pm subject to numbers). Your child explores Sherwood Forest whilst playing with others and being supervised by highly qualified staff.

Contact us about our taster Forest Sessions where you and your little one can come along and see what fun the children have playing in the forest.

Like us on Facebook to keep up to date with forthcoming events. Some free places are available (subject to conditions) for children from the age of two. Contact us on 07989 892831 for information about any of our sessions.



ANOTHER BOWLING SEASON STARTING WITH DISAPPOINTMENT

Following the last issue of Edwinstowe News, I received two phone calls from interested parties.

Unfortunately these have not materialised!

We are a group of 16 who are trying to fulfill the league fixtures, we need 8 bowlers for Thursday afternoons, 9 for Tuesday nights and Saturday afternoon matches and 12 for the Wednesday evening games.

Due to last years fixtures being postponed/ cancelled by many teams the league has insisted that all clubs must either complete the fixtures or lose the tie. We urgently need new members to give us selection assistance as with illness or holiday committments in the completeing season.

We have excellent facilities and all we need is new member to prevent another local sporting icon from falling by the wayside.

Anyone interested please contact myself. . .

ROD SAMPSON on 822448.

THE TYRE SHOP

New, Remould and Part Worn Tyres Wheel Balancing

Unit 17 Beacon Court
New Ollerton
Nottinghamshire, NG22 9QL

Tel. James:
01623 836306

Mobile:
07866507083



www.tyreshop-online.co.uk

New Interactive Speeding Sign on Rufford Road

Edwinstowe's County County Councillor, John Peck has managed to get an interactive speed sign installed at the top of Rufford Road after receiving complaints about speeding. John says, "I'm pleased to have got this sign installed, because I get many complaints about speeding in the village.

We know these interactive signs are very effective at slowing most drivers down, so hopefully, Rufford Road will become a bit safer."



Yes it really is Robin Hood Festival time again! WE NEED HOODIES!

The festival this year runs from MONDAY 3rd AUGUST TO SUNDAY 9TH AUGUST & we need your help. We are now actively recruiting volunteers to help us out at the festival & make it something special.

So if you have some time to spare & would like to join in this fun, family festival, apply now to become one of Robin's Hoodies!

To find out more or to volunteer for the festival please contact: Sue McDonald on 0115 9753782 or e-mail sue.mcdonald@nottscc.gov.uk Please note: Closing date for volunteer applications is Monday 20th July



Freeview / Freesat / Sky

SINGLE POINTS TO FULL SYSTEM.
FM / DAB AERIALS
RETUNES / SET UPS / TV'S WALL MOUNTED
EXTRA TELEPHONE POINTS

FULLY QUALIFIED ENGINEER WITH
30 YEARS EXPERIENCE

10% DISCOUNT FOR OAP'S



CALL FREE ON: 0800 3345650

7 DAY SERVICE, SAME DAY IF REPORTED BEFORE 10:30AM
NO VAT TO BE SCARED ABOUT

Dog Fouling on Jubilee Park



No dog fouling

Most dog owners these days are responsible and "scoop the poop". However, the Parish Council have received complaints recently about dog fouling on Jubilee Park. This is unacceptable, because it must be obvious to anyone that the park is used by young children.

There are two dog bins on the park. Parish Council Chair, Celia Brooks said, "it's a shame that one or two dog owners are being so thoughtless. We have had several reports of a man who arrives in a van with about six dogs and who just lets them loose. We would very much like information about who this is because someone in the village must recognise the description. If you know who it is please contact the Parish Council office."

Any information received will be treated in strict confidence..

Chairman's Report 2014/15

The past year, April 2014 to date has been a busy year for both Parish Councillors and Parish Council Workers.

Our amenity workers have continued to keep our streets clear of litter. They have maintained flower beds on Mansfield Road, High Street – including the new planters and the island at the bottom of High Street. The displays have been praised extensively. They have also looked after and repainted much of the street furniture on the High Street. This will obviously be an on-going job, a bit like the Forth Bridge. The hanging baskets on the High Street are also largely cared for by Parish Council workers.

The Parish Council has provided more facilities on Jubilee Park. These include more trees, both at the top and lower end of the park, new play equipment and an extension to the bunding around the skate park. There is also more seating with tables and Jubilee Park has become the family orientated park envisaged by the previous Parish Council.

Other areas have been maintained to a high standard, including Henton Road play areas and the cemetery.

Negotiations over the development of the Thoresby Colliery Welfare site have been taking place and an agreement with CISWO over the future of part of the site is ready to be signed.

The Parish Council has also worked alongside or supported various community groups such as Sherwood Forest Trust, Safer Neighbourhood Group and Helping Hands to improve facilities for all ages.

Edwinstowe News continues to be welcomed across the village and voluntary organisations, Church groups and schools etc may contribute articles should they so wish.

Cllr Celia Brooks

This magazine also gives local businesses and services the opportunity to advertise and at the same time provide income towards the production of the magazine.

Councillors have continued to hold open air surgeries on the High Street on the first Saturday of every month to allow residents to put their views to the Parish Council.

The Parish Council have now taken over the running of the car parks, to prevent charges being made. It has also been collecting signatures for a petition to extend the Robin Hood Line to serve our village.

Growing Green fingers

The new planters at King Edwin School are starting to show results of the children's hard work.

The planters are made of rot free plastic and there is one situated outside each classroom. There was a huge effort from adult helpers to fill them with soil last year. Children in Key Stage One have been busy planting vegetables and making sure they are kept watered.

The school is very lucky to have so much outside space. As well as the planters there is a quiet landscaped area for children to sit in during playtimes, as well an environmental pond area. We are always keen to develop the children's learning outdoors.

Edwinstowe Parish Council

Accounting Statement 2014/5

	Year Ending 31.03.14	Year Ending 31.03.15
Balances brought forward	78,931	177,623
Annual precept	113,714	113,447
Total other receipts	148,898	70,968
Staff costs	76,953	93,572
Loan interest	-	-
All other payments	86,967	165,686
Balances carried forward	177,623	102,780
Total cash	177,623	102,780
Total fixed assets	1,431,660	1,431,660
Total borrowings	-	-

Subject to External audit approval



Do you have the time To make a difference?

If so King Edwin Primary and Nursery School would like to hear from you!

We are looking for professionally minded people to join our team of committed volunteers who are passionate about the school experience children in their local community are getting.

Governors are not required to manage our school on a day to day basis, but do need a strong commitment to the role and to improving outcomes for children, the inquisitiveness to question and analyse, the willingness to learn and have good inter-personal skills.

Being a school Governor is hugely rewarding but does require your full commitment. We ask that you are able to spare 2-3 evenings per term to attend meetings and be willing to take up opportunities at other times. If you feel you have the skills to offer and would like to join our team, please contact the school office for an application form. If you would like to discuss the role and expectations then please contact Sarah Betts, Chair of Governors, via the school office.

King Edwin Primary and Nursery School, Fourth Avenue, Edwinstowe, Mansfield, Notts, NG21 9NS. Tel. 01623 822111 Email: office@kingedwin.notts.sch.uk

Closing date for applications is 17th July 2015

Sherwood Forest Ranger Service works hard

Improving this ancient forest for wildlife and visitors alike, but we are always in need of a little more help to manage this 450 acre site. Over the winter our volunteers have been carrying out scrub removal by controlling the spread of holly, replacing fencing damaged by fallen trees, as well as building bird boxes and bird tables. Over the summer the volunteer team look forward to invasive species control, resurfacing woodchip paths and producing new benches for around the site.

Whether you are interested in practical conservation tasks, woodland craft production or event stewarding, Sherwood Forest Country Park has many opportunities for you to get involved in. Our current volunteers meet every 1st and 3rd Sunday of the month, and our men in sheds meet every Tuesday 10am – 3pm. For more information contact the ranger service on 01623 823202.



Edwinstowe at Play

For many years now various Edwinstowe Parish Councils have worked to improve the leisure and sports facilities available in our village.

The latest such venture has been the development of Jubilee Park, complete with skatepark, fitness trail and play equipment and picnic tables. Previous Parish Councils developed Henton Road play areas and the football grounds run by Robin Hood Colts. These football facilities include an excellent pavilion named after a prominent councillor for many years, John Benson. It was Councillor Les Ward's suggestion that the pavilion be named the John Benson

Pavilion after John's untimely death five years ago and in recognition of the efforts John and others put into developing the area as a high quality football facility.



The present Parish Council are looking at developing a section of the Fourth Avenue area, close to where the Thoresby Miners' Welfare previously stood, as a public open air leisure facility.

This is still at the planning stage and the Parish Council are in negotiations with CISWO about the use of the land.

Celia Brooks



The Sinking Of Thoresby Colliery - By Margaret woodhead

Earl Manvers had been very reluctant to sink a mine on his estate even though the other Estate owners had sunk mines before the 1st WW. However in 1923 when Bolsover Colliery co-bought Edwinstowe Hall as their Social Centre they told Earl Manvers that they were going to sink the first all electric coal mine. He at last agreed to have a mine on his land as there would be no smoking chimney where they burnt the coal to get the power.

The best bore hole results were on Budby Common and they spent a year deliberating how to get a rail line there before deciding it was not feasible. Then the only place where they could build the miners houses was half a mile away a long walk at the end of a shift. The plans had included a church and a swimming pool

My Uncle George Forest was a blacksmith and he came in 1925 so he and Aunt Madge got one of the 1st houses on Rufford Ave as it was first called. So then my parents came in 1926 Father was a Sinker and lived with them whilst the rest of the houses were built.

I was born there in October and we moved next to the plot which was to be the school. To have a house with indoor toilet and bathroom with hot water must have seemed a dream. Unfortunately this was the year of the general strike mainly over cutting miner's pay. The result was that the mines only worked a 3 day week until the War in 1939.

In spite of that Bolsover Colliery Co. continued to built the model mining village they had promised with Welfare Hall, Social Club, Bowling Green, Tennis Courts and Cricket & Football Fields and Pavillion They were the first Mining Company to appoint a Safety Manager in 1889 when they were founded. They also insisted that a metalled road be built to Mansfield so they could bus in workers. Travel to Mansfield had been by rail or walk by the river to Clipstone.

The mine came to full production in Sept 1929 They employed a 'pit "bobby" to patrol the village and report where gardens and hedges were not beeing maintained. The house and job could be lost. In the Institute there was limit of 3 glasses of beer between 6 and 10pm I never saw drunkenness or heard swearing whatever language was used down the mine it was not to be taken home

EDWINSTOWE VILLAGE NEWS EDITORIAL TEAM

Cllr Josie Cocking , Cllr John Peck , Cllr Liz Benson, Robin Woodhead , Alice Dunn

COMMENTS

Please email your comments to :

edwinstowe.pc@btconnect.com or drop this form in at the Village Hall.

If you would like to submit an article or an advert for the next issue email us at: edwinstowe.pc@btconnect.com



A.W. LYMN

The Family Funeral Service

Personally owned and managed by the Lymn Rose Family



- Meet David from our Ollerton office
- 24 hour personal service
- Flagship fleet of Rolls-Royce and Bentley vehicles
- Finance terms available
- In-house memorial masons and florist
- 25 offices in Nottingham, Derby, Mansfield and surrounding areas

"Our family serving your family since 1907"



AW Lymn Ollerton
Manvers House, 5 Sherwood Drive NG22 9PP
Tel: 01623 860 045
/awlymn | www.lymn.co.uk | /awlymn

