

Welcome To The Latest Edition Of The Parish Magazine, "Edwinstowe Village News."

Questionnaire Page 3



Local Services & Groups Directory



Local (01623) Number Applies Unless Otherwise Stated

Helpful Numbers

Parish Council Office - 01623 824243
Rushworth & Sherwood District Council - 01623 824243

New Directory Page 30

Local News



What's Inside

Inside, you will find all the usual articles from our community groups in the village, news from your Parish Council and information about the new Sherwood Forest Visitor Centre. Also, about the proposal to extend the Robin Hood railway line through Edwinstowe.

When complete, the Visitor Centre should benefit the village economy and give a boost to the prosperity of the High Street.

If the proposal to extend the Robin Hood Line comes off (and it is still an "if" at this stage) then Edwinstowe would get a much needed double boost after the closure of Thoresby Colliery.

Lastly, a reminder about Edwinstowe's Annual Christmas Event, organised by the Parish Council with the support of local businesses. It will be held on Thursday, 26th November. (Details on page 11)

Last year saw our biggest and best event and this year promises to be just as good. Please put the date in your diary.

EDWINSTOWE VILLAGE

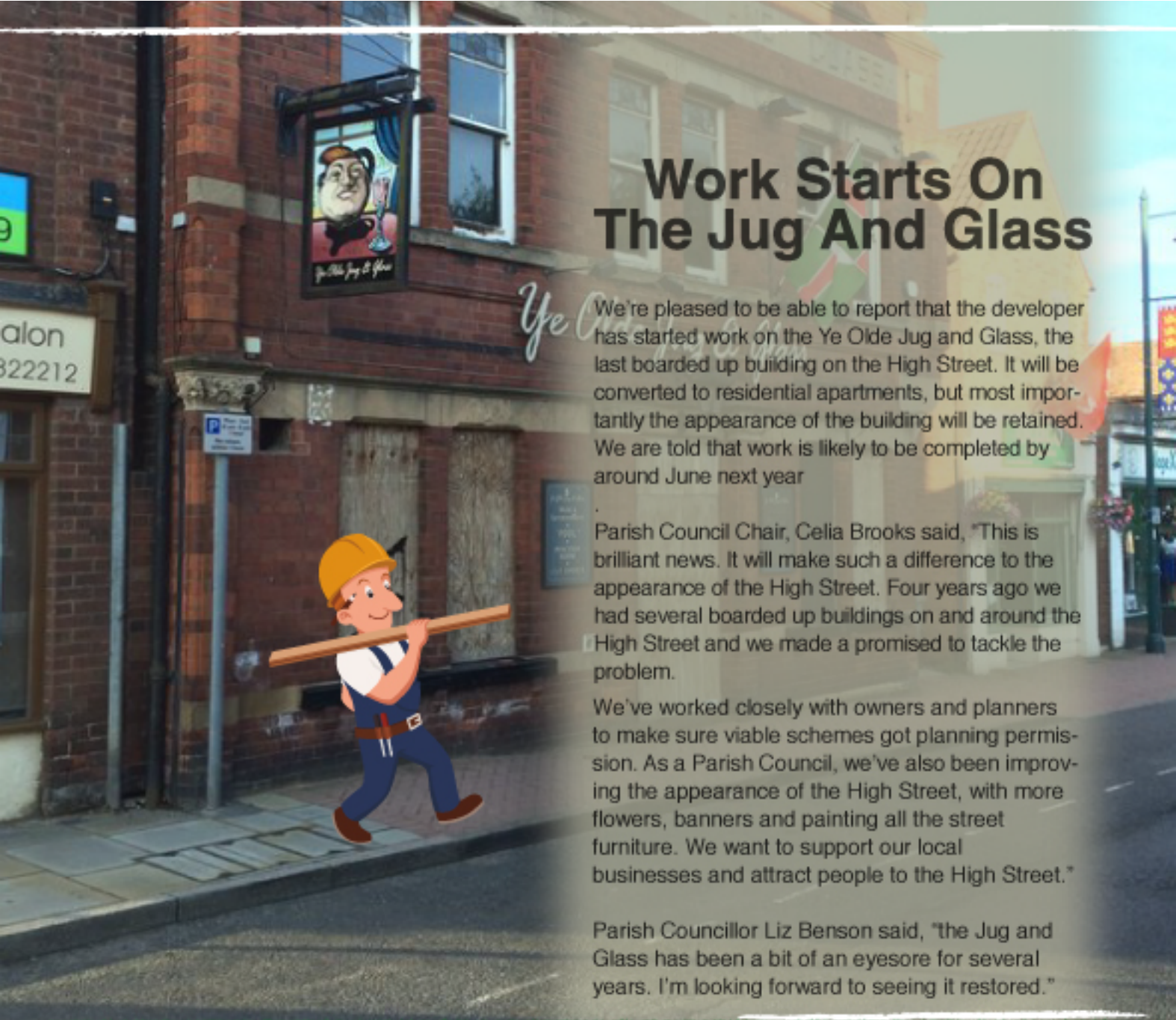
Work Starts On The Jug And Glass

We're pleased to be able to report that the developer has started work on the Ye Olde Jug and Glass, the last boarded up building on the High Street. It will be converted to residential apartments, but most importantly the appearance of the building will be retained. We are told that work is likely to be completed by around June next year

Parish Council Chair, Celia Brooks said, "This is brilliant news. It will make such a difference to the appearance of the High Street. Four years ago we had several boarded up buildings on and around the High Street and we made a promise to tackle the problem.

We've worked closely with owners and planners to make sure viable schemes got planning permission. As a Parish Council, we've also been improving the appearance of the High Street, with more flowers, banners and painting all the street furniture. We want to support our local businesses and attract people to the High Street."

Parish Councillor Liz Benson said, "the Jug and Glass has been a bit of an eyesore for several years. I'm looking forward to seeing it restored."



Edwinstowe High Street- It Needs Resurfacing

The Parish Council is concerned about the deteriorating surface of the High Street. Vice-Chair Dennis Tattersall says, "the Parish Council have worked hard to improve the appearance of the High Street. Our staff have painted all the bollards and other street furniture. We've put in extra planters and planted out the island at the junction with West Lane. We arrange for hanging baskets to be put up every year. The poor road surface spoils it though. The High Street is heavily used by traffic and as winter draws in, it will only get worse. It needs doing soon."

Edwinstowe's County Councillor, John Peck, is aware of the problem and has put in a formal request for re-surfacing. "I know money is tight, but I put in a request last year and it was put on the reserve list for re-surfacing. I have recently put in a further request to see if it can be included in next year's programme. I will keep trying. It took me several goes before I managed to get Lansbury Road done, so I'm sure we'll get there in the end."

DEAR RESIDENT- PLEASE GIVE US YOUR VIEWS

Please take a few minutes to complete this short questionnaire.

The Parish Council will be drawing up a Community Led Plan to say how residents would like the village to develop over the next few years. A Community Led Plan can only proceed with the support of The Parish Council. We will hold open meetings but we want to start by getting the views of local residents through this questionnaire. Your views are important to us in helping to make the right decisions for the future of our village. Feel free to use extra paper if you want to write more.

Do you support the extension of the Robin Hood Line and the re-opening of Edwinstowe Station?

Your comments and suggestions

Do you agree with the proposal that the Thoresby Colliery Site should be developed as a mixture of housing (including for first time buyers and bungalows for the elderly) and business units for employment. Also the spoil heap landscaped with a viewing point and developed for leisure as part of Sherwood Forest Country Park?

Your comments and suggestions

Do you support the Parish Council improve the play provision for children including a new play area on Fourth Avenue?

Your comments and suggestions

Do you agree that if the vacant Miners Welfare site is developed for housing it should be mainly bungalows for our elderly residents?

Your comments and suggestions

Do you agree the Parish Council should continue to improve the appearance of public spaces such as the High Street with such things as more floral displays?

Your comments and suggestions

Do you have any other comments or suggestions as to how you would like Edwinstowe to develop or ideas to improve the village?

Your name and address

Phone number.....

(we will not pass any details to a third party and all comments will be treated in confidence)

Please cut this out of the magazine and take it in or post to: Edwinstowe Parish Council, The Village Hall, Mansfield Road, Edwinstowe, Mansfield, Notts. NG21 9NJ **Or complete online at www.edwinstowe.co.uk**

You can also drop it into Abbey Road community centre.



Peter Borrowdale

P&A Masonry Services

3 Croft Farm Close,
Everton, Doncaster,
South Yorkshire, DN10 5DJ

MEMORIAL SPECIALISTS

Tel 01777 949029 . Mobile 07890589147
E-mail: peterborrowdale@yahoo.co.uk

A family business for over 110 years
Memorials-Lettering-Renovations

The Robin Hood Railway- It's Inching Closer!

We reported in the last issue that the County Council had commissioned a feasibility study into the viability and costs involved in extending the Robin Hood Line to Edwinstowe and Ollerton, with the re-opening of Edwinstowe station and a new station at Ollerton. Edwinstowe's County Councillor, John Peck, has been campaigning for this for several years and during the summer he attended a meeting at County Hall with the Leader of the County Council, Alan Rhodes, the Chief Executive, Anthony May and the M.P. Mark Spencer. John said: "the meeting was very productive and we are all committed to do everything possible to move this project forward."

Some key people are now behind this. Several years ago, I joined with Stella Smedley the late Ollerton councillor who had campaigned for the line extension for many years. We talked to anyone who would listen about this idea of extending the Robin Hood Line and at first, there was little interest. I was often told the idea was "pie in the sky". But now everyone seems to support the idea and I'm pleased the key people are backing the proposal.

I think we have a real opportunity and I'm feeling optimistic. But we have to act quickly now the colliery has closed. I think there is real enthusiasm from across the political spectrum and there seems to be widespread agreement amongst Edwinstowe residents."

Nottinghamshire County Council has recently applied for Government funding to support the County Council contribution. This is crucial. Without the funding from a successful bid, the project couldn't go ahead. Extending the line will require considerable capital input however, it would be a more straightforward project than the original Robin Hood Line, as the line already exists and is in working condition. The Parish Council has backed the campaign throughout and collected a supporting petition earlier this year. Parish Council Chair, Celia Brooks said, "we've backed the campaign from the start. We would love to see Edwinstowe station open again and visitors coming to Sherwood Forest by train." District Councillor Paul Peacock said, "I hope the project gets the go ahead and the necessary funding. I'm sure it would prove popular with Edwinstowe residents as a traffic free way to travel to Mansfield and Nottingham."

**safer
neighbourhoods**

A member of your local policing team will be holding monthly Beat Surgeries in Edwinstowe Village Hall.

Dates will be advertised on the village website and on the banner outside the Village Hall. This is your chance to let us know about the issues that are affecting you and your community.

Interested
In An
Advert

HOW MUCH IS IT?

Business card sized advert - £25

1/4 page advert - £50

1/2 page advert - £75

Full page advert - £100

Inside front or back cover / full page - £200

Outside back cover / full page - £225



MAJOR OAK MEDICAL PRACTICE PATIENT PARTICIPATION GROUP

Saturday Opening/Self Check In

The once a month Saturday opening at the surgery has proved popular with patients and the recently installed self-check in screen has been generally well received.

Social Media

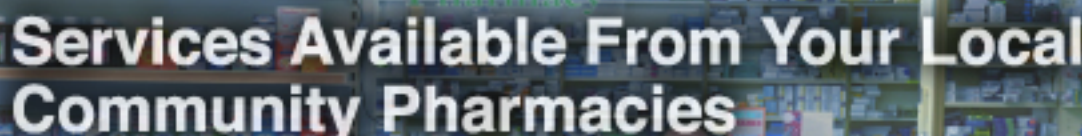
Did you know that the practice now uses twitter and face book to advertise topics of interest to those patients who use social media?

Friends and Family Test

May we remind patients to complete Friends and Family Test cards, which can be found on the reception desk. These are invaluable to the practice, enabling staff and the PPG to analyse and monitor concerns as well as praise for the surgery staff. A card can be completed after each of your visits to the surgery. You can give your name and contact details if you wish, names given are strictly confidential to the Practice Manager and her staff and are not shared with the PPG. We only help to monitor trends and make suggestions for improvement where needed.

Flu Jabs

Remember that flu jabs from your GP practice are free if you are over 65 years old or under 65 with a long term condition, for children aged 2 to 4, if you are pregnant or if you are a carer. If you missed the flu jab clinics on the 3rd and 10th of October contact the surgery for further information.



Services Available From Your Local Community Pharmacies

Pharmacists are always available to ask for advice on anything to do with your health. We can advise on minor ailments, recommend over the counter products and refer to your GP where necessary.

Also we can give advice on prescribed medicines and are available for consultation either in the pharmacy or by telephone.

Pharmacy First is a minor ailment scheme available throughout the county, aimed at anyone who is exempt from paying prescription fees.

This includes under 16's and over 65 yr olds. It provides a range of medicines for a variety of minor ailments free of charge to patients. Ask at your local pharmacy and they can then sign you up to the scheme.

With the financial constraints placed on the NHS, it is important for us all to take responsibility for the orders that we place for our repeat medication and only order what we need, avoiding any stock piling of medicines. Also, it is important that any unwanted medication is returned to the pharmacy for disposal safely.

Be aware of the dangers of sharing other people's prescribed medicines. Please don't do this. It is extremely dangerous.



Thoresby Colliery Closure- What Next For The Site?

In our last issue, we mourned the premature closure of Thoresby Colliery, which ended Edwinstowe's ninety year association with coal mining. Residents are wondering what happens next?

We have seen some colliery sites get housing developments, industrial estates, solar and wind farms and the occasional (usually unwelcome) application to build an incinerator. Other sites have stood empty for years so what happens to the Thoresby site is important for Edwinstowe.

Nottinghamshire County Council have applied to the Government for the Thoresby Colliery site to become an Enterprise Zone to attract jobs to the area. Included in the bid is a request for grant funding to support the County Council plan to extend the Robin Hood Line to Edwinstowe and Ollerton with the re-opening of the Robin Hood Line. Edwinstowe's County Councillor John Peck has been leading a campaign to extend the Robin Hood Line for several years. The project now has the support of local M.P., Mark Spencer and is backed by the Parish Council. A meeting was recently arranged by Harworth Estates (a company working on behalf of UK Coal which specialises in regenerating brownfield industrial sites including former colliery sites) to discuss with local politicians and others how the Thoresby Colliery site might be developed. Your Parish, District and County Councillors attended the meeting.

Harworth's initial plans envisage a housing development on the Thoresby site, plus business units to support jobs. The spoil heap would be reclaimed over a number of years with extensive tree planting. Paths would lead

to the top where there would be a viewing point with spectacular views of Sherwood Forest and beyond-Parish Council Chair and District Councillor, Celia Brooks gave a cautious welcome: "the sooner the site is developed the better. We don't want it to be left empty for years. Housing and business units to create jobs, providing it is sensitive to the local environment, would be preferable to some of the alternatives, such as at Bilsthorpe. As local Councillors, we want to be involved at every stage to represent the views of Edwinstowe residents." Both Celia and her fellow District Councillor, Paul Peacock warned that any expansion of the village, with a large development on the site, would put pressure on village facilities. Paul said, "our two primary schools are full and the doctor's surgery is under pressure. These matters will need to be addressed at some stage. However, any jobs which are created must be a good thing." County Councillor, John Peck agreed and added, "there is also the issue of increased traffic and such things as the long-overdue improvement to Ollerton roundabout must be included as part of any development. However, I do believe an Enterprise Zone to create jobs at Thoresby is the best solution for Edwinstowe and could make our ambition to see the Robin Hood Line extended to Edwinstowe more likely."

We must stress that at the time of writing, no planning application has as yet been submitted and any proposals are likely to take several years to complete. We will keep you informed.



Freeview / Freesat / Sky

SINGLE POINTS TO FULL SYSTEM.
FM / DAB AERIALS
RETUNES / SET UPS / TV'S WALL MOUNTED
EXTRA TELEPHONE POINTS

**FULLY QUALIFIED ENGINEER WITH
30 YEARS EXPERIENCE**

10% DISCOUNT FOR OAP'S



CALL FREE ON: 0800 3345650

**7 DAY SERVICE, SAME DAY IF REPORTED BEFORE 10:30AM
NO VAT TO BE SCARED ABOUT**

A New Face in the Forest



I'm Chloe Ryder, the new RSPB Senior Warden for Budby South Forest. I've returned to my native Nottinghamshire after working for various conservation organisations across the southern part of the UK; most recently managing heathland and woodland RSPB reserves in East Sussex. If you're a regular visitor to Budby, you'll hopefully bump into me as I get to know the reserve and the wildlife, and see the gradual changes I'll be making to restore the heath to its former grandeur. I'm here to help this exceptional site reach its full potential.

Many of you cherish the reserve and many others travel to see the fantastic wildlife here. I will be working with local experts, volunteers and partner organisations to make Budby the best home it can be for specialist heathland wildlife like woodlarks, nightjars and black oil beetles. I want to ensure that everyone can experience these amazing natural spectacles.

The heathland flora and fauna at Budby needs encouraging through careful planning and sensitive management. This will involve removing trees and scrub, controlling bracken and exposing bare earth. Some of the work may look a little raw at first but it is essential if future generations are to enjoy this special place.

Please do get in touch if you'd like to help protect and enhance Budby - there's plenty to do! I'm looking for volunteers to carry out practical reserve work and species recording. I'd also love to hear from you if you have stories or photos of Budby to share

Senior Warden, RSPB Budby South Forest
Tel: 07718 248 953 | Email: chloe.ryder@rspb.org.uk

Best wishes,
Chloe Ryder.

Edwinstowe Allotments- Would You Like To Grow Your Own Veg?

All the Ollerton Road allotments are now all taken and there is a small waiting list. However, allotments do become vacant from time to time at both Ollerton Road and Boy Lane and if you enjoy the satisfaction of growing your own fresh fruit and vegetables, you should apply to place your name on the waiting list. Please contact the Parish Office.

A working group of Parish Councillors and allotment holders meets regularly, chaired by Councillor Chris Ayre. Chris says, "by working together with allotment holders, we've managed to sort out the problems at the Ollerton Road site. There is now a fair waiting list, water is now properly metered and there is a fair set of rules which have been agreed after consultation with allotment holders. We pay regular visits to the allotments to make sure everything is in order and plots are well looked after. I'm delighted to say, most of the allotments look lovely and allotment holders clearly take pride in their plots.

Allotments are not a men-only preserve and I'm pleased to see that women are also taking on allotments and even some children, encouraged by their child minder!"

Edwinstowe Christmas Event
EDWINSTOWE PARISH COUNCIL

Mince Pies

What's On

Craft Stalls
Balloon Modellers
Live Music & Magician
Punch & Judy
Chestnuts

Fairground Ride
Christmas Choirs
Hot Food
Meet Santa
Dutch Organ
Brass Band
Games

BIGGER THAN EVER - NOW INCLUDES Forest Holidays

THURSDAY 26th
November

4:30pm - 7pm

THE FLOWER ROOM
SARAH BOOD COACHES

**PETER WARD
SOLICITOR**

TURNER ATKINSON & WARD
SOLICITORS

23, HIGH STREET EDWINSTOWE NOTTS NG21 9QP

TEL 823450

FAX 823456

**TURNER ATKINSON & WARD OFFER
A FULL RANGE OF CONVEYANCING
SERVICES, PREPARATION OF WILLS,
AND ADVICE AS TO PROBATE**

**APPOINTMENTS ARE AVAILABLE AT
SHORT NOTICE AND HOME VISITS ARE
MADE UPON REQUEST**

**WE ARE AUTHORISED AND REGULATED BY THE
SOLICITORS REGULATION AUTHORITY
REGISTRATION NUMBER 101320**

Community Plan- Residents' Views Needed

The Parish Council have agreed to draw up a Community Plan. This will involve gathering together the views of residents, including community groups and community representatives to set out how we would like to see the village develop over the coming years. We would like to hear your views about housing, transport, jobs, community facilities and amenities so we can set out a plan which will inform decisions about how the village develops over future years.

We will be arranging a meeting of all interested parties sometime in the near future. If you would be interested in participating, please contact the Parish Clerk, Alice Dunn. We will be writing to community groups, asking for views and representatives to be involved in drawing up the plan. We want to consult as widely as possible.

**Your initial views would be helpful.
Please complete the questionnaire on page 3**

RSPB To Build The New Visitor Centre

August saw the County Council announce that a consortium headed by the Royal Society for the Protection of Birds (RSPB) had won the contract to design and build the new Sherwood Forest Visitor Centre.

This brings to an end the long running saga which saw the proposal by Discovery Attractions, a commercial company, to build a Robin Hood themed attraction, come to nothing because of failure to raise the finance. By choosing the RSPB, along with their consortium partners, Thoresby Estates (the owners of the land) and the Sherwood Forest Trust, the County Council have gone for a well respected major charity with a proven track record of building award winning visitor centres, who are in it for the long term. They will manage the new centre, which should be opened in 2017 and also the Country Park and National Nature Reserve. The cost of the project will be £5.3 million.

It has been necessary to come up with a proposal for a new visitor centre, as English Nature has given notice to the County Council to move off the present site to enable the area to be restored to forest, Edwinstowe is the gateway to Sherwood Forest and 350,000 visitors visit the country park each year.

The new Visitor Centre will provide an introduction to the trees and wildlife in the forest, but it will also tell the story of Robin Hood, the world famous outlaw of legend and myth who brings visitors from all over the world to our village and forest. Parish Council Chair, Cllr. Celia Brooks welcomed the announcement: "I'm delighted the matter has been resolved at long last and I hope the new Visitor Centre is a high quality design which befits our world famous forest. It will be built on the edge of the village, so I'm sure our local businesses in the Craft Centre and on the High Street will see the benefit as more of the many visitors who come to Sherwood Forest will be tempted to have a look at our lovely village. Tourism is important to the prosperity of Edwinstowe. The Parish Council will continue to work hard to make sure our village, especially the High Street, remains well looked after and attractive to visitors."

County Councillor, John Peck said: "I'm looking forward to seeing the new visitor centre built after all the previous problems. Edwinstowe has lived with tourism to the forest since Victorian times and I'm sure we will continue to see benefits to our local economy. However, I will be seeking assurances about such matters as the traffic management of visitors and parking. These matters will need addressing."

GUITAR LESSONS

Acoustic Folk....Classical....Spanish

*Structured Learning complete with Lesson Plans
£12 per lesson*

Ian Wise *B.A(Hons), Dip:NCTD.,PGCE (London)*
11A, Robin Hood Avenue, Edwinstowe. tel: 823535

It is becoming increasingly hard to raise the funds we need to continue to provide our unique, care, support and love to the hundreds of people whose lives we touch every year. We are therefore appealing to you, whether you have already been touched directly by Beaumont House or have a loved one who may need our support in the future to consider making a gift to Beaumont House.



OUR URGENT APPEAL

The clock is ticking for Beaumont House.

We are appealing for your help.

For 25 years the people of Newark and the surrounding areas have offered their continued and outstanding commitment to the work of Beaumont House. The tireless fundraising and contributions have enabled the service here to develop into a place that holds a unique space in all of our hearts.

Donating just £3 a month for a year could help us pay for an hour of Hospice care for someone in their own home £33 a month for a year could help to pay for a night of respite at Beaumont House. Read more about our appeal and how to donate here <http://www.beaumonthouse.co.uk/our-urgent-appeal> Our Light up a Life service will be held on Sunday 6th December at Beaumont House. Donating is easy - you can text 'LUAL32 £25' or any amount of your choice to 70070. If you would like to dedicate a light to someone you love, contact us on 01636 610556 to make your donation.

During Hospice Care week 2015, 5th – 11th October we will be holding our Be Bright Blue for Beaumont House campaign. Find out more at <http://www.beaumonthouse.co.uk/events/be-bright-blue-for-beaumont-house>



SPECIALIST VALUATION DAY FREE EXPERT VALUATIONS

Monday 23rd November, 11am-3pm:

Ollerton Town Hall, Sherwood Drive,
New Ollerton, Newark,
Nottinghamshire, NG22 9PP

WE URGENTLY WISH TO BUY, IF YOU WISH TO SELL :

Coins (GB & World, Sovereigns, Krugerrands, Royal Mint, Proof Sets) Stamps, English & Foreign Banknotes, Antiques, Watches, Gold, Silver, Postcards, Cigarette-Cards, Medals & Militaria, Scientific Instruments, Clocks, Jewellery, Swords, Bayonets, De-Activated Weapons, Pre-1900 Documents / Books & Maps, and Pre-1960 Sporting Programmes and Tickets:



THE EXPERTS OF LOCKDALES AUCTIONEERS WILL BE PRESENT, AUCTION CONSIGNMENT OR IMMEDIATE PURCHASE OFFERS WILL BE AVAILABLE. FREE VALUATIONS, NO OBLIGATION, NO APPOINTMENT NECESSARY.

Tel: (01473) 627110 www.lockdales.com sales@lockdales.com

Edwinstowe Christmas Event

EPWINSTOWE PARISH COUNCIL

Preparations are already underway for the annual Christmas Event. It will be held on Thursday 26th November starting at 4.30pm.

The event is organised by the Parish Council who are always well supported by local businesses and community groups. Member of the Parish Council events working group, Karen Peck said, "we've been preparing for this year's event since August. We have a group which includes representatives of local traders who have been organising all the stalls and activities.

There is always a lot to do and our Parish staff do a great job in putting it all together. We bought extra Christmas lights last year and it was probably our most biggest and most successful Christmas lights event ever, due to the tremendous support of the local businesses and community."

Parish Councillor Barbara Starbook has been an enthusiastic supporter of the event says, "everyone loves to see the High Street lit up at Christmas and it's always great to see the community spirit with all the village coming together at the start of the festive season."





S & E TIMBER



.SUMMER HOUSES
.DOG KENNELS
.WENDY HOUSES
.CHICKEN COOPS
.RABBIT HUTCHES

SINCE 1980
HEAVY DUTY BESPOKE
SHEDS/KENNELS
MADE TO MEASURE

. Heavy Duty Fence Panels
. Oriental Garden Features
. Garden Trellis

Skirting/Architrave
 • Handrails • Dado Rail
 • Door Casings • Shiplap

Heavy Duty Fence Panels, Concrete Posts & Plinths



All Planed and Rough Sawn Timbers

SLEEPERS!
 – New & Reclaimed

Natural Sandstone Paving –
Patio Packs from £17.50sq/m

Decking Kits
 10' x 10' – £170
 12' x 12' – £250

• Matchboard • Floorboards
 • T & G Cladding • Loft Insulation • Beading

• Wide Range of Plywood • Chipboard
 • Eliotis • Plaster Board • M.D.F.

UNIT 45, TRENT ROAD, BOUGHTON INDUSTRIAL ESTATE SOUTH
 Telephone: 01623 861364
OPEN:- 8am – 5pm Mon-Fri; 8am – 3pm Saturdays

Stockists of
PICNIC TABLES &
GARDEN BENCHES

Introducing Robiac-Rochessadoule, A Village With History But Looking To The Future...

As the newly elected Maire of our Commune, one of my key objectives is for Robiac-Rochessadoule to twin with a community in the UK, which shares common ties, both in the historical and current sense. I believe that there are many advantages to both Edwinstowe and Robiac-Rochessadoule if the 2 communities could "twin" together, although I recognise that progress towards this goal may be influenced by the current economic challenges.

Robiac-Rochessadoule is situated in the Cevennes National Park, a range of hills and mountains renowned for their forests, flora and fauna. Our "Commune" is located in the "Gard" Department, about 50 miles north of the historic Roman city of Nimes.

Robiac itself is a village of Roman origins whereas Rochessadoule grew up as a coal mining centre during the last two centuries.

Now that the mines have closed, we have about 1000 inhabitants living in the villages, working in service industries or enjoying retirement. Our primary school, popular with parents in the village and beyond, has just received a major refurbishment.

Like Edwinstowe, situated in Sherwood Forest, the environment plays an important role in the life of Robiac-Rochessadoule. The Commune is proud of its wildlife and the wide choice of outdoor pursuits, including walking, adventure parks, and cycling. "L'Etoile de Besseges", the first professional cycle race of the European season, was first organised 40 years ago and passes through the villages each year and is known world-wide.

Why should Edwinstowe and Robiac-Rochessadoule consider twinning with each other? There are a lot of commonalities between the two communities:



- a shared heritage of mining,
- the focus on and the importance of tourism,
- links between our primary schools enabling children to meet up and experience each other's culture.
- woodlands that need to be managed, protected and enjoyed by locals and tourists alike
- forward-looking Councils, who wish to take advantage of new opportunities, whilst dealing with current challenges
- Enjoyment of common interests and pursuits such as walking and cycling

I should very much like the opportunity to come and meet some of you at Edwinstowe to see how we could take this forward and of course you are all welcome to visit us at Robiac-Rochessadoule !



Standing Proud With New School Logo



King Edwin Primary School are proud to reveal their new school logo. The new design embodies the crown used for many years but now also represents the children. Head Teacher Mrs Helen Foster said it demonstrates a fresh and invigorating rebrand for the school.

The tree theme represents where we are in this beautiful part of Sherwood Forest. Most prominent is the child reaching up and standing proud. We wanted to keep the crown motif so the child is wearing the crown, which keeps the past whilst still moving forward. With children being at the centre of everything at King Edwin, the design of the logo was opened to the children.

There were so many interesting ideas and themes it was decided to combine lots together and this is the result.

The hand drawn plans were sent to a local graphic designer, Kelly Jordan, who worked her magic to turn it into this professional image. The overall effect is a very dynamic logo with a child at the heart of it – just like they are in school. We are all very happy with it. The new logo has already been printed on the water bottles and book bags and is available on jumpers, polo shirts and coats for parents to buy. Mrs Foster said that children are already wearing the new uniform and that they look brilliant.

Commemoration To The Crew Of Stirling Bomber EF127

For well over a year now, Jane and Robert Bealby of Broomhill Grange Farm have been planning the commemoration of a WW II bomber crew, most of whom lost their lives on the evening of 26th February 1944. In 2014 whilst attending Newark & Notts Agricultural Show, Jane was given a booklet 'Aviation Memorials in Nottinghamshire' written by Howard Heeley of the Newark Air Museum, Winthorpe. This struck a note with Jane as it reminded her of notes she had kept concerning an aircraft that had crashed on their farm towards the end of the war, and for which there was no known memorial. The Stirling Bomber EF127 had been operating from RAF Winthorpe on a night exercise over the East Midlands area on the evening of 26th February 1944. The weather at take-off had been poor, though acceptable for the purposes of a navigation exercise, which was scheduled to last for six hours. However, conditions deteriorated quite rapidly some four hours later.



With a cloud base of less than 1,000 feet, the aircraft lost the ability to take ground fixes to determine its position. It is believed that the aircraft became disorientated, ran out of fuel and crashed at Broomhill Grange. The crew comprised six Australian airmen and one RAF Airman. Five of the crew are thought to have died on impact, with just the two Australian airmen (mid upper and rear gunner) surviving the crash. The mid upper gunner, Flt Sgt Bill Taylor, was able to pull the Rear gunner, Flt Sgt Reg Plath, clear of the aircraft and to raise the alarm. Reg Plath was taken to Mansfield Hospital. Bill quickly returned to active service, but was subsequently lost on a raid over Germany just three months later. Reg spent some months in hospital before returning to service for the rest of the war. He was then repatriated to Brisbane Australia, where he still lives today and is the only surviving member of the EF127 crew. After many months of planning, Jane and Robert were proud to welcome several decedents and family members of the original crew to Broomhill Grange on Friday 19th June 2015 for the Blessing and



dedication of the new monument that commemorates the crash site of EF127. Padre Steve Radley RAF and the Venerable (Air Vice Marshal) Robin Turner RAF Retd officiated. This commemoration service was attended by Royal British Legion representatives, together with RAFA and RBL Standards from Edwinstowe and Warsop and a CCF contingent from Ollerton. The Last Post and Reveille were performed by Sarah Vernon.

Following the service, family, friends and guests took lunch together on the farm, reflecting on the events of 26th February 1944 and recognising the supreme price paid by so many of the crew of EF127 on that fateful night.

Although Reg Plath was unable to make the journey from Australia to UK for this event, Jane was able to visit him in Australia during July, where she also established contact with other family descendants of the crew, including relatives of Bill Taylor's family, missing until this surprise trip to Australia. Job done.

Phil Jones
RBL Edwinstowe

Major Oak Music Choir

Although the Major Oak Music Choir was only formed in April 2015, they already have 27 members who enjoy coming along every week to sing many of their favourite songs. The Pop Choir presented their very first concert on 20th July in the Church Rooms, Edwinstowe to a packed audience of family and friends. Instead of purchasing tickets, each member of the audience was asked to bring a non-perishable food item to gain entry to the event.



This resulted in a collection of over 70kg of food which was donated to the Trussell Trust who run the local food bank in Ollerton. It was a very successful and enjoyable evening, and the choir received many compliments about their performance.

The Major Oak Music Choir is an adult Pop Choir for Ladies, singing classic chart hits, old and new. New members are always welcome. There are no auditions and you don't even need to be able to read music, so if you enjoy singing great songs and would like to benefit from the feeling of well-being which is gained from singing in a group, then you can join us by simply come along to one of our rehearsals. The Pop Choir resumed after the summer break on Monday 7th September, and rehearsals take place each Monday between 7 – 8.30pm in the Church Rooms, Mansfield Road, Edwinstowe. Weekly sessions cost just £4.00.

For further details please visit www.majoroakmusic.co.uk or contact Pauline Daghish on 07450 316756.

A.W. LYMN

The Family Funeral Service

Personally owned and managed by the Lymn Rose Family



- Meet David from our Ollerton office
- 24 hour personal service
- Flagship fleet of Rolls-Royce and Bentley vehicles
- Finance terms available
- In-house memorial masons and florist
- 25 offices in Nottingham, Derby, Mansfield and surrounding areas

“Our family serving your family since 1907”



AW Lymn Ollerton
Manvers House, 5 Sherwood Drive NG22 9PP
Tel: 01623 860 045
f /awlymn | www.lymn.co.uk | t /awlymn



Hello There, My Name Is Kev Dale

I'm delighted to have been invited, to write a gardening set for your newsletter so here goes. As the summer, slowly but surely, slips into autumn there is still lots to do in our gardens and allotments. Whatever size of garden you have, the levels of excitement for me at least, are still the same. Cutting the flowers for in doors, digging the soil, harvesting the crops, and getting my hands in the soil there's nothing quite like it. Had a bad day at work and I know that feeling, go outside and lose yourself in the garden the soil will heal you better than any doctor's medicine. As I'm sure you will have noticed, we have been short changed by the sun this year but not to worry organic gardening is the way to increase your chances of building and creating healthy flowers and vegetables.

D.A Williams Electrical Contractor

REWIRES, SHOWERS, INTRUDER ALARMS
SECURITY LIGHTING
& GENERAL ELECTRICAL WORK UNDERTAKEN

TEL: 01623 836517
07719999781

Start by making your own compost, growing borage and comfrey, and using nettles all the above can be added to your homemade compost. Grow as much as possible from seed and go to plant fairs where you can buy healthy plants cheaply and there is always a good choice. Plan ahead for next spring and summer and now is a good time to prepare the soil by digging it over and adding compost to give it a good feed. All old compost can be recycled and added to the soil. I like to put it through a sieve then either add it to other compost or use it as mulch either way it all adds goodness. If you have ever thought of living the good life then what's stopping you give it a go.

Contact
The Parish Council

Interested
In An
Advert

Business card sized advert - £25

1/4 page advert - £50

1/2 page advert - £75

Full page advert - £100

Inside front or back cover / full page - £200

Outside back cover / full page - £225

Edwinstowe Village Hall Management Committee

On November the 10th we will celebrate our 32nd AGM.

The hall is run by a Management Committee who are all volunteers.

It consists of: 6 Parishioners, 2 Parish Councillors and representatives from the users of the Hall.

As we are a registered charity we are responsible for the finance and upkeep of the hall.

An Annual Report is given at the AGM which covers the financial year – 1st October 2014 – 30th September 2015.

At a recent Coffee Morning we raised £228.00 which will be added to our refurbishment funds.

Thank you to all who supported and donated items for this event.

If you wish to book the hall you can contact us in the following ways:

Telephone: 07594 460846

Email: edwinstowevhallbookings@hotmail.co.uk

Edwinstowe Parish Council

Working to make a difference

Tel: (01623) 824243
edwinstowe.pc@btconnect.com
www.edwinstowe.co.uk

Clerk - Alice Dunn

Administration - Nicola Priestley



Mark Spencer MP

Parliamentary
House of Commons,
London, SW1A0AA

Tel: 020 72197143

Email:
mark.spencer.mp@parliament.uk

Constituency
Sherwood Constituency
Office, Room 3, Under One
Roof, 3A Vine Terrace,
Hucknall, Nottingham,
NG217HN

Tel: 0115 9681186
Web/Social media
www.markspencermp.com
[@mark_spencer](https://twitter.com/mark_spencer)

C.Clr John Peck

Mobile 07748181719

Email:
clr.john.peck@nottscc.gov.uk



Cllr Celia Brooks - Chairman
& District Councillor



Cllr Dennis Tattersall - Vice Chairman



Cllr John Peck
& County Councillor



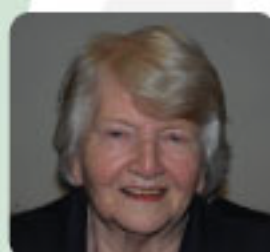
Cllr Chris Ayre



Cllr Liz Benson



Cllr Michael Brown



Cllr Josie Cooking



Cllr Terry McLaughlin



Cllr Paul Peacock
& District Councillor



Cllr Karen Peck



Cllr Barbara Starbrook

**Councillors Can Be Contacted Via
The Parish Council Office**

NEWS FROM YOUR LOCAL TOURIST INFORMATION



We are well and truly in Autumn now but that doesn't mean we have to hibernate! Newark & Sherwood area has a lot to offer in respect of places to visit and events to attend. Here are just a few:-

Thoresby Park are holding their Winterfest on 7th & 8th November & the Winter Foodfest on 14th & 15th. Both events are sure to get you into the Christmas spirit!

In December you can get the kids out and about with the Santa Trail at Rufford Country Park or the Yuletide Trail in Sherwood Forest. Santa will be in Rufford late November and in Sherwood it will be St Nicholas in December. See www.nottinghamshire.gov.uk for further information or give us a call.

Please note that although details of events are correct at the time of going to press, it is always advisable to telephone in advance to confirm details. The Tourist Information Centre at Rufford Country Park is open daily 10.30am-4.30pm.

You can leave a message on our answer phone and we will reply to you the following morning. **Tel: 01623824545**

Alternatively you can email us at sherwoodtic@nsdc.info or visit our website www.newark-sherwooddc.gov.uk and follow us on twitter www.twitter.com/homeofrobinhood

You may fancy booking into the ever popular Savile Restaurant at Rufford Park for Christmas lunch – bookings are being taken now. Tel: 01623821350. Plus don't forget it's Panto season!

We have many books ranging from 'Walks in Nottinghamshire' to 'Spot 50 Trees' for sale which may be ideal for Christmas presents.

Whatever your interests, whether it is walking or cycling, crafts or historic houses we have information on events or attractions related to these.

Don't forget the new holiday brochures will be coming into our office from January!



How Our Integrated Care Teams Can Help You

Newark and Sherwood Integrated Care Teams, part of Nottinghamshire Healthcare, offer support to adults in their own home, including care homes. These teams are made up of nurses, occupational therapists, physiotherapists, community matrons, specialist nurses, health-care assistants, falls specialist, mental health workers and social workers. They support recovery, ease pain and help people to manage their own conditions. The team work closely with GPs to give coordinated care and support tailored to individual patients.

Our story, from a patient whose mobility and balance was poor, shows how our Falls Prevention Service, part of the Integrated Care Team, helped reduce this lady's risk of readmission to hospital.

A lady lived alone in a large house and was falling weekly. Her mobility and balance were poor, and she had dementia. On occasions she was falling daily, and had been seen by her GP and in A&E many times. Her family lived away and the patient had carers at home.

The Falls Prevention Service was asked to see the patient with a view to making her safe at home and reducing her risk of and number of falls. The team supplied equipment, installed adaptations and improved her strength and balance. They also looked at the pattern of her falls to establish her 'at risk' times and worked with the carers to reduce the risk. Links were also established with the mental health nurse and GP, due to her other medical and health problems.

The patient's family talked positively about the support the team provided for their mum and said:

"The team's input has been very valuable. Mum has a reasonable level of family support but none of us can provide a professional, impartial, assessment of her capabilities and needs."

"As a family we have also appreciated the expert advice and suggestions regarding appropriate physical aids such as grab handles, rails and bath lift. These have made a big difference to Mum's safety and ease of living."

Referrals to the Integrated Care Team can be made by a GP and self-referrals are also accepted via the Single Point of Access on 0300 456 4951.

The History Of Land Management Of Sherwood Forest

Monday 23rd November 2015

7:30 – 9:30pm

At The Forest Lodge Inn, Edwinstowe.

You are cordially invited to join the inspiring Charles Watkins for a night of Sherwood insights. Charles is a Professor of Rural Geography at the University of Nottingham, who has written many fascinating books, papers and



researched the history of woodland and Sherwood Forest itself for many years.

Charles' latest books are 'Europe's Changing Woods and Forests' and 'Trees, Woods and Forests - A Social and Cultural History'.

Charles draws on the most recent work of historians,

EGMANTON PLANT HIRE

For a full list of hire equipment please see:

www.egmantonplanthire.co.uk

ANDREW BANKS

Phone/Fax: 01777 872316

Mobile: 07971 627588

VAT registered

Please see our website for current price list

archaeologists, geographers, botanists and foresters. With illuminating illustrations and his own inimitable energy, he tells us of humankind's interaction with these most valuable resources, describing the many ways that the land and trees at Sherwood have been managed during the last 200 years.

Don't miss this rare opportunity to see him live (and in an historic Sherwood coaching inn).

Places are limited, so get your tickets soon. Tickets are only £5 per person

To book call Sherwood Forest Visitor Centre on 01623 823 202

The Dukeries Singers

My word the days have shortened and the temperature has plummeted. The tomatoes have all ripened and the potatoes have been lifted.

Autumn is definitely here. Fortunately we have a warm space in which to rehearse for all our forthcoming engagements.

We meet every Wednesday above the Concert Hall at the Dukeries Academy in Ollerton from 7-30pm to 9-30pm.

Access is via the Leisure Centre entrance and car park. We welcome new members, especially men. We need their deeper voices for the other voices to "sit" on. Singing is very therapeutic and lifts the spirits as the nights draw in.

Thursday 26 November 2015 Carols at High Street Lights Switch on, Edwinstowe, 6-30pm approx.

Thursday October 29 2015 A concert for Help the Aged at Warsop Church 2-00pm which should finish for 3-30pm

Wednesday 2 December 2015 Carols outside Ye Olde Red Lion, Wellow, 6 -15pm

Saturday 12 December 2015 Concert at Edwinstowe Village Hall, 7-00pm

Thursday 17 December 2015 Carols at Lynds Close Day Centre, Edwinstowe, 1-00pm.

We shall also be singing carols at Sherwood Forest Visitor Centre, Edwinstowe, 20 December 2015 at 2-30pm.

Let's hope for good weather so we can enjoy the lovely Autumn colours.

If you wish to engage the Choir for your fund raising or celebratory do, our Concert Secretary Phil Robinson on 01623 822070 would be pleased to hear from you.

Jan



A generous donation from Lions Clubs across the North Nottinghamshire area has provided nurses from Bluebell Wood Children's Hospice with Community Nurse Kit Bags, to take on home visits.

Retford Lions, Edwinstowe and Dukeries Lions and Worksop and Mansfield Lions chose to support Bluebell Wood Children's Hospice after hearing about the benefits of the bags.

Retford Lions, Edwinstowe and Dukeries Lions and Worksop and Mansfield Lions chose to support Bluebell Wood Children's Hospice after hearing about the benefits of the bags.

They contain a chilled compartment for medicine, respiratory equipment, a stethoscope, thermometer and iPads, preloaded with medical software.

John Battersby of Retford Lions said: "We were really impressed with the concept of the Community Nurse Kit Bags, especially as it will assist Community Nurses in often difficult situations. "As well as accessing medical software, the nurses will also be able to take a short video or photo on the iPads, to send to a consultant. This quickens the process and could really speed up a diagnosis."

Retford Lions grouped together with other Lions Clubs in the area - Edwinstowe and Dukeries and Worksop and Mansfield - to raise the total of £8,400 needed to buy the bags and the equipment inside.

Helen Mower, Head of Fundraising at Bluebell Wood Children's Hospice, said: "We are delighted that the Lions have raised such a fabulous amount for us to buy our first set of Community Nurse Kit Bags.

"These will make a huge positive difference to our children and families, as our nurses will always have vital portable, technical equipment to hand when they need to care and support our children in their own homes.

Currently, such equipment is stored at our hospice in North Anston and community nurses have to pick it up on their way to a child's home.

"It costs more than £3m a year to keep our hospice open, so we are really grateful for the continued support of the Lions Clubs in the region who have helped to raise this money." For more information about Bluebell Wood, visit www.bluebellwood.org

Tales From The Echium Garden @ Edwinstowe House



What a busy few months we have had over the summer! After opening the new garden to the public for the first time in Spring we have been busy sending amazing Echium plants to customers across the UK. We were again privileged to supply a range of Echiums to Alan Titchmarsh for his new garden on the Isle of Wight. The icing on the cake for us is that we delivered to his home in Hampshire and were given a tour of his garden by his gardener, ending with a coffee and gardening chatter in his potting shed in the company of the family cat!

On 22nd July we were featured in Country Life magazine in the article "Flower Power - The Plant Collections of Britain" featuring a fantastic photograph of the Echiums at Edwinstowe House, showcasing the work of the charity Plant Heritage (www.nccpg.com). An extraordinary achievement

as Echiums are supposed only to flourish in the south-west of England! This led us to exhibiting in the Plant Heritage marquee at this year's RHS Tatton Flower Show. We are delighted that we have recently been awarded the National Plant Collection® of Echiums which will be showcased in the Echium Garden at Edwinstowe House, High Street, Edwinstowe, on open days through May and June next year.

The Edwinstowe House Gardening Group meet the first Wednesday of the month 6 - 7.30pm at Edwinstowe House, everyone welcome to come along to talk about and share gardening knowledge!

Linda Heywood
www.echiumworld.co.uk
Tel: 07957 602073

Key DIY Ltd

Having recently opened on the 22nd August, Key DIY is the new business venture for the owners at Key Building Supplies who have been trading locally for 35 years. In this new adventure they also have invited another partner to help along the way.

The partners of Key DIY realised after the closure of many local businesses there was the need for a local DIY store to provide that much need gap for the local

and nearby residents. They also looked to their local community for their workforce providing much needed jobs. The staff are all ready, waiting and eager to please with a friendly smile and always willing to help. So if you have a DIY project underway or you're in the planning stages, why not try your local business as we think we will be KEY for all your DIY needs!

In store we have a large range of Dulux Paint, as well as a paint mixing facility to enable mixing of almost any colour, wallpaper on stock and to order, all your decorating products from brushes to rollers, frog tape etc., hand tools for building, plastering, plumbing and general tools, wood care and preservatives, electrical fittings, bulbs, sockets and switches and more, plumbing and drainage fittings, taps and wastes. Power tools for the home and garden from drills to lawnmowers, silicones, glues, fillers, pest control, household goods and much more...

So with great deals running every week and late night opening, don't miss out, come and visit us at:

**38 Rufford Avenue, Ollerton, Newark,
Notts NG22 9PN T: 01623 861734**
Mon to Sat 8.00am - 8.00pm
Sunday 10.00am - 4.00pm

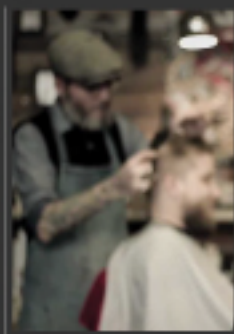


Fella'z BARBERS

Modern and Traditional Styles Welcome

Opening Times

Mon: 9:00 til 5:00
Tues: 9:00 til 2:00
Wed: 9:00 til 5:00
Thur: 9:00 til 5:00
Fri: 9:00 til 6:00
Sat: 8:30 til 2:00



(Open 6 Days A Week)

Find us on FaceBook
[facebook.com/fellazl](https://www.facebook.com/fellazl)

**40 High Street, Edwinstowe
Next To The Robin Hood Statue**



We Have Moved!

Come in & visit the Flower Room at 7 Mansfield Road, Edwinstowe.

A great big 'Thank You' once again to all our dedicated customers who have visited us in our new premises. It has been a pleasure to welcome you all, especially at our grand opening, it was lovely to know you were supporting us in the new shop. We are very excited about our new location it has been a great success with everyone and has attracted new customers.

We have lots more space enabling us to stock more flowers, plants, cards and an exciting new range of giftware, at very reasonable prices, not to mention our new Christmas range which will be coming soon. We are hoping to hold an open evening to launch our new collection. We will keep you informed

Finally I would like to thank everyone who supported our Macmillan coffee morning on 25th September which proved to be a great success having raised a grand total of £405.27. This would have not been possible without the yummy cakes from The Cake Hole, The Craft Stalls and not forgetting Dot on the Raffle Stall & the China Moon for allowing us to use their shop frontage.

Please come in and see us if you haven't already done so, you are all very welcome to come in and have a browse. All our friendly and helpful staff will be pleased to see you and will do their utmost to help you.

Kind regards from
Jayne and all at
The Flower Room.

KEY BUILDING SUPPLIES LTD

ROAD C, BOUGHTON INDUSTRIAL ESTATE, BOUGHTON,
NEWARK, NOTTS, NG22 9LD. Tel: 01623 861735

email: keybuildingsupplies@hotmail.co.uk • www.keybuildingsupplies.com



FOR ALL YOUR BUILDING AND LANDSCAPING NEEDS...

***MASSIVE STOCKS OF HOUSE
COAL, SMOKELESS FUEL,
DRY SPLIT LOGS - BULK BAGS
& NETS, GAS & ROCKSALT***

**STOCKISTS OF BLOCKS, BRICKS,
CEMENT, AGGREGATES, PLASTERS &
BOARDS, TIMBER, TILES & FENCING,
ETC. VARIED RANGE OF DECORATIVE
MATERIALS INC GRAVELS AND**

**PAVING. CRANE AND TIPPER LORRIES AVAILABLE
FOR DELIVERIES. EXTENSIVE RANGE OF PRODUCTS
IN OUR ON SITE SHOP!**



Brick cutting service, also brick slips & arches: www.keybrickcutting.com

Bush Hog Tales

It had always been my dream to write a book. Finally years later I achieved my dream. I focus on using my spare time to create stories that involve magic and adventure. A little creature that more and more people are falling in love with is raising awareness for wildlife and encouraging reading. The books that I have written and self illustrated are being loved by children and adults all over the world. From the sales of my books I donate all profits that I make to wildlife charities. I have so far this year helped a hedgehog rescue and Nuneaton and Warwickshire wildlife sanctuary. The characters from my books are touching the hearts of so many people. On my Facebook page I post interesting and unusual animal facts and I wish people a Happy birthday. I try to do that every day to brighten peoples day up. My books are about a lovable new kind of creature called a Bush-hog who often gets mistaken for a hedgehog even though he looks nothing like one! He is smaller, has shiny metal spikes and unlike hedgehogs likes to sleep at night! With his friend Fluffy the cat he embarks on many adventures learning about new animals in a fun and exciting way. With added humour my books make my hobby extra special as I love to do all the research involving the animals and trying to think of funny jokes to include. I have created magnets, bookmarks and activity sheets which I give away to make people smile and I have even done comic strips and an animation on You tube featuring my characters. I am always looking for new and exciting ideas to make people smile and I never thought that my passion for writing and drawing would get so big! I have been on BBC radio,



had appearances at schools and done so many events at libraries and even restaurants and a butterfly park. I have even been invited to go to Spain to write a story about a resort involving the staff and the mascot that they have for the children who visit the hotel. I have had celebrities give me words of support and even Hannah Spearit from S club 7 and Primeval requested a copy of my book! I hope that I can continue to make people smile, encourage reading and help animals as well. I am always being told how proud people feel of me but I could not have done it without the support from my family and friends. I love doing what I do and love living my dreams. It is the best hobby that I could ever have wished for. Writing my books has made me so happy and I am already thinking of the next one! The little Bush-hog can get up to anything so there are plenty of adventures waiting to be discovered.

Find Bush Hog Tales online at <https://goo.gl/xf317>

Remembrance Day Parade Sunday 8th November 2015

Assemble at Fourth Avenue Car Park
09.20 (on Fourth Ave near Nursing Home)

On Parade

09.30

March Off

09.40

Arrive St Mary's Church

09.50

Service Commences

10.00

Service Ends

10.40

Fall In

10.45

March Off

10.50

Re-Form War Memorial

10.55

Memorial Service Commencing with:

The Act of Remembrance and Roll of Honour- Minister
Then Shall Be Said: The Act of Homage

"THEY SHALL GROW NOT OLD,
AS WE THAT ARE LEFT GROW
OLD
AGE SHALL NOT WEARY
THEM, NOR THE YEARS CON-
DEMN

AT THE GOING DOWN OF THE
SUN AND IN THE MORNING WE
WILL REMEMBER THEM".

Response by all:- WE WILL
REMEMBER THEM

The Last Post
2 Minutes Silence
Reveille



"WHEN YOU GO HOME,
TELL THEM OF US AND
SAY, FOR YOUR TOMOR-
ROW WE GAVE OUR
TODAY"

Laying of wreaths
Service Ends With The
National Anthem & the Final
Blessing
March Past the Saluting
Base- High Street
Halt at Nightingale Nursing
Home
Dismiss

Trustee Volunteers Sought For Sherwood & Newark Citizens Advice Bureau

**citizens
advice
bureau**

An exciting opportunity has arisen at Sherwood and Newark CAB

Sherwood & Newark Citizens Advice Bureau is a charity serving the local community; providing free, confidential advice and information on a wide range of subjects. We are a busy and successful bureau helping 4500 new clients a year and covering a largely rural area of North Notts. We now need Trustees from across the whole of the Newark & Sherwood district to help lead the bureau into the future.

We are looking for a Treasurer and new trustees with business management and human resources skills. The post of trustee is unpaid but will provide you a great deal of experience and satisfaction. Reasonable expenses are reimbursed. Commitment to the aims of the CAB service is essential and experience of the role of trustee would be useful.

We need people from Newark & Sherwood who have a clear understanding of the needs of the local area to help us manage and develop this much-needed service. We welcome applications from all sections of the community and are committed to equality and value diversity.

If you are interested in this challenging but rewarding role and would like a trustee recruitment pack please contact:

Contact Details: Jackie Insley (Chief Officer)
Telephone: 01623 861769
Email: Ji@ollerton.cabnet.org.uk

Every Citizens Advice Bureau is a registered charity.
For advice on any subject, visit your local Citizens Advice Bureau at:

NEWARK (Keepers Cottages, Riverside Park, Great North Road)
NG24 1BL

Tuesday & Thursday: 9.30 am – 2.30 pm
NEW OLLERTON (5 Forest Court) NG22 9PL
Monday, Wednesday & Friday: 9.30 am – 2.30 pm

Outreach Service Opening Hours:

Monday: Blithorpe (The Surgery, 35 Mickledale Lane)
9:30am-12:30pm
Tuesday: Clipstone (The Health Centre, First Avenue)
10:00am-12:30pm
Wednesday: Blidworth (Blidworth Surgery, 59 Mansfield Road)
10:00am-1:00pm

(Please Note: The second Wednesday of each month the Service finishes early at 12 Noon)

Or contact: Nottinghamshire Advice Line
(0844) 856 3411 or (0300) 456 8369 from a mobile
Monday to Friday 10.00am – 4.00pm
Or see: www.citizensadvice.org.uk

M.H. SERVICES

“Over 20 years experience”

Patios & Drives

Fencing

Trees/Hedges

Drainage

For a tidy, reliable and friendly service, please contact Mark Hayden

Phone: 01623 824425

Mobile: 07725 649789

Email: mandshayden@aol.com

Sparkling Sherwood

Winter Lighting Event

Sherwood Forest Country Park

11 - 13 December 2015

See Sherwood Forest's ancient oak trees in a whole new light – a truly magical start to winter.

Tickets £3 per person are limited and must be purchased in advance. Tickets on sale 1 October 2015.

Timed entry: 6pm, 6.15pm, 6.30pm, 6.45pm & 7pm daily.

For details and to book call 01623 823 202.



sponsored by



Please note the 1 mile circular walk is to be enjoyed at your own pace but takes on average 30 minutes.

Sparkling Sherwood 2015

Following on from the sold out success of last year's Sparkling Sherwood event, Notts County Council and The Sherwood Forest Trust are proud to announce the dates for the 2015 event.

A truly magical start to winter and a memorable experience to treasure. See Sherwood's ancient trees in different light!

Jointly organised between Notts County Council Ranger Service and The Sherwood Forest Trust, the walk route is approximately one mile. Your journey will illuminate Sherwood Forest in a magical way, evoking the spirit of the forest, with undertones of Robin Hood, the Green Man and Herne the Hunter.

The Major Oak is the centrepiece of your journey, and many are moved to tears, it's that emotive an experience.

The 1 mile circular walk is to be enjoyed at your own pace but takes on average 30 minutes.

Booking details:

11th, 12th and 13th December 2015

Timed entry tickets 6pm, 6.15pm, 6.30pm, 6.45pm & 7pm.

Cost: £3.00 per person

You need to book in advance and tickets are limited.

Tickets are on sale from 1st October by calling The Sherwood Forest Visitor Centre 01623 823 202.

Handsome, Healthy and Happy

Free vaccination*

when you join The Healthy Pet Club,
plus many more fantastic benefits

saving you over £200**



For more information contact:

BRIDGE HOUSE VETS

Tel: 01623 621019



*Minimum 12 month membership, early cancellation will require full payment of £90 vaccination fee.

**Based on cost of purchasing these benefits separately (taking average prices charged across a sample of DV5 practices) would result in an average annual savings in excess of £200. Benefits, costs and savings vary depending on the type and size of your pet.

Photo Exhibition- Wonderful Trees

As part of this winter lighting evening event we will have a photographic display on view in the Oak Room at the Visitor centre.

We would like it if you would get involved and share any of your photos new or old with us.

The theme for this year's display is 'Wonderful Trees', we would be very interested in seeing any photos of Sherwood landscape, the trees and any creature that may live or feed on the them.

You can send your photos, including your name and details of when the photo was taken, via

• Email,
charleen.case@nottsc.gov.uk
(no larger than 5mb per email please)

• Post; Sherwood Forest
Visitor Centre, Swinecote Rd,
Edwinstowe, Notts, NG21 9HN
(we will not be able to return
original photos)

**10% off
for all
Healthy Pet
Club Clients**

Mi Groomers

**MiGroomers Open within
Bridge House Veterinary Surgery**



To book an appointment call

Bridge House Veterinary Surgery
Sherwood Hall Road, Mansfield, Nottingham, NG18 2NH
Tel: 01623 621 019
Monday to Friday 8:30 - 18:30 - Saturday 8:30 - 10:00

www.migroomers.co.uk

1st Edwinstowe Scout Group This Year Our Cubs Are Celebrating 100 Years Of Scouting

They have lots of exciting things to look forward to including a trip to Doncaster Dome a Centenary camp at Newark and an adventure day trip to London.

Our Explorer Scout section has now started and meet every Friday at the Church rooms. If you are aged 14 and are interested just pop into the Church rooms and see Buzz or Skip.

Sherwood Forest Scout Post.

This year you will find Scout post stamps and post boxes in the following shops: Locks butchers - Co-op - Church charity shop and The Pet shop. The stamps are 25pence each, all proceeds go to the scout group. We guarantee to deliver all cards addressed correctly and within the delivery areas by Christmas Eve. All cards are delivered by members of the scout group.

HELP NEEDED

The Scout Group are looking for leaders. If you would like to help or need more information please ring Sue on 823761

Goffs *This Christmas*

Of Edwinstowe

goffs festive roast

*Succulent Turkey breast with our own special forcemeat filling of sage & onion, apricots and home made sausage meat dressed with streaky bacon and herbs.
"a winner every Christmas" From £20 (Feed 4-6)*

free range local turkeys

*Superb fresh birds from a local farmer, some bronze, some traditional white.
Not to be mistaken with mass farmed turkeys!!!*

fresh meats

*2 day minimum matured beef Sirloin, topside, rib roast for superb flavour and taste
or try our boneless stuffed pork roast with cranberry & orange forcemeat.*

game to eat

*3 bird roast - boned Guinea fowl stuffed with Gressingham duck breast, pheasant
and a seasonal stuffing wrapped in streaky bacon and herbs £24.50.
Locally shot Pheasant, Gressingham duck, Traditional Geese.*

cooked to perfection

*Goffs Festive roast ham - English slow roasted ham joint topped
with Cranberry & fresh orange glaze individually prepared to our
time honoured family recipe, cut to your requirements.
Hand Made pork pies, Turkey & Cranberry pie and more!*

selection of artisan english cheeses...

*"All you could wish for a fantastic Christmas meal from your village,
pop in to discuss your requirements with our passionate team"
or log on to our website or email for more info!*

FACEBOOK - Goffs Butchers

Goffs Butchers, 43 High Street Edwinstowe tel 01623 824598

email goffsbutchers@gmail.com website www.goffsbutchers.co.uk

SHERWOOD FOREST PROBUS CLUB

The Sherwood Forest Probus Club is an organisation for men over the age of 53 who are retired or semi-retired. It is a very friendly non-funding and non-profit making organisation, which meets on the 1st Thursday of each month at the South Forest Complex, Clipstone Road, Edwinstowe. The meetings begin at 11.30 a.m. and consists of a speaker, lunch and then Club business is conducted. The subjects of the speakers vary considerably and very often the talks are accompanied with slide films/power point. In the past some of the subjects covered have been Notts. Railways, River Trent, Memories of a Vulcan Bomber Captain, Metal Detecting, and many more.

Don't be put off by some of the titles as sometimes they do not really relate to what you think! The 1st Thursday in July the Club holds the Presidents Lunch and the 1st Thursday in December is, of course, the Christmas Lunch and relations, friends, and neighbours are always very welcome to attend. The Club also tries to arrange day trips and again anyone can join these outings. It is a very friendly Club and, at present, the membership is very low. New members are urgently needed and, with a yearly subscription of only £20.00 it is a bargain.

Anyone interested in joining, please contact either President Peter Hull on 822148 or Secretary Keith Wardle on 01623 823006 or just come along to a meeting to see what happens.

Whats On

Saturday 21st November

10:30am - 12:30pm

Make A Christmas Willow Angel

Pre-Booking Is Essential On:

(01623) 823202

£15 Per Person / Willow Angel

Children under 16 must be accompanied by an adult.

Monday 23rd November

7:30pm - 9:30pm

The History Of Land Management Of Sherwood,

At The Forest Lodge, Edwinstowe

Places Limited So Booking

Is Essential...

Book On: (01623) 823202

£5 Per Person / Willow Angel

Not suitable for under 16's

Sunday 29th November

12:00 - 2:30pm

Saturday 5th December

11am - 12:30pm & 2pm - 3:30pm

Sherwood Dog Grotto...

Santa Claws Is Back!!

All Proceeds Donated To Jerry

Green Dog Rescue

(01623) 823202

Minimum donation of

£2 Per dog which includes Dog Gift

Saturday 28th November

- Sunday 20th December

Weekends Only

11am - 4pm (Last Admission

3:45pm)

St Nicholas Yuletide Grotto

(Runs Until 20th December)

£5 Per Child includes Small Gift

Fri- 11th, Sat-12th &

Sun- 13th December

Sparkling Sherwood Evening Event

see Sherwoods Ancient Oak

Trees In A Whole New Light!

Tickets £3 Per Person

Timed Entry Tickets 6pm, 6:15pm

6:30pm, 6:45pm & 7pm

Tickets limited & must be

purchased in advance

(01623 823 202)

Great Achievement By Edwinstowe Pre-school

Edwinstowe Pre-school provides 'outstanding' OFSTED rated childcare. Contact us on 07989 892831 to find out more.

Remember all 3 to 4 year-olds in England can get 15 hours free childcare during term time. Some 2-year-olds are also eligible depending on your household income. Search the gov.uk website for 'free childcare for 2 to 4 year olds' to find out more.

Pre School Playgroup Sessions - Monday, Wednesday & Thursday 9.00am - 12.00pm in Edwinstowe Village Hall for children aged 2 and over. A playgroup allowing children to grow and learn whilst playing in a relaxed and friendly environment under the supervision of highly qualified staff.



Forest Sessions - Tuesday & Friday 9.00am - 12.00pm or 12.00pm - 3.30pm (Friday pm subject to numbers). Your child explores Sherwood Forest whilst playing with others and being supervised by highly qualified staff. This is a unique opportunity for your child to have fun playing in the forest, jumping in puddles and learning about nature. Don't worry, we provide waterproof outfits so they'll be ready whatever the weather! You just need to supply the wellies.

Don't worry, we provide waterproof outfits so they'll be ready whatever the weather! You just need to supply the wellies.

If your child is too young for playgroup, don't forget our Baby & Toddler Stay & Play - Tuesday & Friday 9.30am - 11.00am in Edwinstowe Village Hall. Various activities for you and your child to enjoy in a relaxed, friendly atmosphere. Meet new friends whilst your little ones play. Snack and drink included. Like us on Facebook to keep up to date with forthcoming events.

Parking Places At West Lane

Residents have been asking why the three extra parking places have now been deleted with criss-cross lines. The explanation is that when the Parish Council took over the car parks from Newark and Sherwood District Council, they asked for extra places to be marked out. District Council officers looked into it and agreed, so they marked the places out before handing the car parks over. However, since then, a resident has complained to Newark and Sherwood District Council, claiming these spaces infringe their right of way to the rear of their property.

The District Council have upheld the complaint and agreed to take the spaces out again. It means the Parish Council have only managed to create the one extra space in East Lane car park. Parish Council Chair, Celia Brookes said, "it's unfortunate because we really wanted to try to create a few extra spaces because we know how much pressure there is for parking. We've had to accept the District Council's advice. At least, it's now very clear where people should and shouldn't be parking, so we hope nobody will be getting tickets in future."

THE TYRE SHOP

New, Remould and Part Worn Tyres Wheel Balancing

Unit 17 Beacon Court
New Ollerton
Nottinghamshire, NG22 9QL

Tel. James:
01623 836306

Mobile:
07866507083



www.tyreshop-online.co.uk



Firefighters at Edwinstowe Fire Station would like to make you aware that October is National Smoke Alarm Testing month, smoke alarms save lives, but only if they work.

Test yours monthly to make sure they are in good working order.

We are still accepting clothing donations for the Fire Fighters Charity, please place these in the yellow bin outside the Station. Also, thank you to everyone in the community who supported our Charity Car Wash in September. This raised much needed funds for 1st Edwinstowe Scout Group & The Fire Fighters Charity.

Test it

- ① Don't put alarms in or near kitchens or bathrooms where smoke or steam can set them off by accident.
- ① Fit at least one on every level of your home and test them monthly.
- ① Ten year sealed battery smoke alarms are the best option.
- ① If it is a ten year alarm, you will need to replace the whole alarm every ten years.
- ① Never disconnect your alarms or take the batteries out if it goes off by mistake.



A Musical Play with 12 Songs
 Extracts from *The Wipers Times*
 produced by Sherwood Foresters
 on First World War front line.
 Albert Ball VC, Fred Karno,
 Morgan Kingston, Eric Coates,
 Sherwood Rangers

www.kobobooks.com
 Derek Crabtree - epub - £1.00

All Songs in MP3 & MIDI are freely available
 on request from sherwoodtimes@yahoo.co.uk

Local Teacher Needs Support



Dear Parents / Carers

As you are aware running marathons is my passion / hobby. This year I am able to run the New York Marathon during half term, fulfilling a lifelong ambition. I am running this and hopefully raising funds for Olivia Holden.

If you would like to sponsor me, and raise funds for Olivia please go to:

<http://gogetfunding.com/miss-farrow-runs-new-york-marathon-for-livvy/>

Some parents have already sponsored me and I would like to take this opportunity to say thank you for your kindness.

Yours truly,

Miss Farrow

Edwinstowe Leisure Painters

Autumn Term started on the 7th September. We had a sketching day out to Cromford on Tuesday 13th October together with monthly demos.

Group leader Graham Laughton has his colourful exhibition at the Tuxford Gosh Gallery in early November.

Notice

Further to our notice in the last edition, we have spoken to the residents who walk six dogs on the Jubilee Park.

We are assured that they are responsible dog owners and all is in order.

Craft Bombing

Did you see it? . . .

On the high street during Robin Hood festival week. Thanks to Sue & the team at Dukeries Academy further education.



Kettlewells

9 Nov	3 Days	ST ANNES-ON-SEA - TURKEY & TINSER	£280
6 Dec	2 Days	THURS FORD CHRISTMAS SPECTACULAR	£157
30 Dec	4 Days	DURHAM - NEW YEAR BREAK	£345
17 Mar 16	5 Days	SOUTHERN ENGLAND INC SALISBURY & GUILDFORD	£295
4 April	5 Days	LANCASHIRE RED ROSE COUNTRY INC CANAL CRUISE	£347
11 April	3 Days	WARNERS BODELWYDDAN CASTLE	£321
29 April	4 Days	BRUGGE WEEKEND	£280
8 May	3 Days	LIVERPOOL CITY BREAK	£165
14 May	2 Days	SETTLE CARLISLE RAUWY & LAKE DISTRICT	£122
23 May	5 Days	BOURNMOUTH & THE DORSET COAST	£295
5 June	6 Days	SOUTHERN IRELAND - COUNTY WICKLOW	£470
11 June	8 Days	JERSEY BY AIR	£385
19 June	2 Days	NATIONAL TRUST INC TYNYESFIELD & LACOCK ABBEY	£145
26 June	6 Days	OBAN, ISLE OF MULL & ANCIENT IONA	£516
10 July	5 Days	BOURNMOUTH & BEAULIEU	£436
18 July	5 Days	DOWNTON ABBEY & JANE AUSTEN	£362
27 July	5 Days	LLANDUDNO SUMMER BREAK	£350

DAY EXCURSIONS

Tues 3 Nov	DOWNTOWN SHOPPING/GARDEN CENTRE	£8.50	£8
Sun 8 Nov	CRAFTS FOR XMAS & HOBBYCRAFT NEC	£18	£17.50
Sun 15 Nov	BRIGG GARDEN CENTRE	£10	£9.50
Sat 21 Nov	HARROGATE CHRISTMAS MARKET	£14.50	£14
Wed 25 Nov	YORK ST NICHOLAS FAYRE	£13	£12.50
Sat 28 Nov	HARROGATE KNITTING & STITCHING OR SHOPPING	£14.50	£14
Sun 29 Nov	GOOD FOOD SHOW / MOTORCYCLE LIVE NEC	£18	£17.50
Wed 2 Dec	LEEDS CHRISTMAS SHOPPING	£12	£11.50
Sat 5 Dec	LINCOLN CHRISTMAS MARKET	£11.50	£11
Sun 6 Dec	MELTON MOWBRAY VICTORIAN FAYRE	£13	£12.50
Sun 13 Dec	CHRISTMAS AT PENNELLS GARDEN CENTRE - LINCOLN	£9.50	£9

Theatre Trips

Sun 22 Nov	DISNEY ON ICE SHEFFIELD	£37.50	£37
Sun 29 Nov	BIRMINGHAM INTERNATIONAL TATTOO	£42	£40
Tues 29 Dec	ALADDIN NOTTINGHAM THEATRE ROYAL	£44	£43.50 - £43
Thurs 12 May	BELLY ELLIOT - MUSICAL BRADFORD ALHAMBRA	£63	All One Price

Tel: 01777 860360

Fax: 01777 710351

Email:

Info@kettlewellscoaches.co.uk

GIFT VOUCHERS
AVAILABLE

Local Services & Groups Directory



Local (01623) Number Applies Unless Otherwise Stated

Helpful Numbers

Parish Council Office - 824243
Newark & Sherwood District Council - 01636 650000
Nottinghamshire County Council - 0300 5008080
Notts Police - Non Emergency - 101
Citizens Advice Bureau - 0344 411 1444
Tourist Information - 824545
Major Oak Medical Practice - 822303
Edwinstowe Library - 822280
Sherwood Forest Trust - 821490
Sherwood Forest Visitors Centre - 823202
The Village Hall - 07594460846

Local Groups

1st Edwinstowe Beaver Scouts - 823761
2nd Edwinstowe Brownies - 824782
Edwinstowe Pre-School Play Group - 07989892831
Edwinstowe Historical Society - 822264
Edwinstowe Hospice Support Group - 822070
Edwinstowe Leisure Painters - 01777 870588
Edwinstowe's Helping Hands - 07800803728
Major Oak Pop Choir - 07450316756
Dukeries Singers - 822070
Abbey Road Art & Craft Group - 825518
Royal British Legion - 824787

Schools

St Marys Church Of England School - 822518
King Edwin Primary - 822111
Dukeries Accademy - 860545

If You Would Like
To Add Your
Group To Our
Directory List,

Please Contact
The Parish Council
Office On: 824243
Or Email:

edwinstowe.pc@btconnect.com

Churches

St Mary's Church Office - 822430
St Mary's Church Rooms - 07840435796
Methodist Church - 623192

Nurseries

Bright Beginnings Day Nursery -
822440



COMMENTS

Please email your comments to :

edwinstowe.pc@btconnect.com or drop this form in at the Village Hall.

If you would like to submit an article or an advert for the next issue email us at: edwinstowe.pc@btconnect.com



ABS Tiling and Plumbing

01623 822350 07771 794037

My team specialises in Bathroom and Wet Room installation. We can manage the project from the planning stage onwards, supply the stock or simply come in to fit your new suite and tiles.

You won't need to bother finding traders with the skills required to complete your bathroom, we have qualified craftsmen for planning, surveying, tiling, plastering, joinery, plumbing and electrical work.

We install level access Wet Rooms to NSDC approved standards for customers with mobility and access problems. We can also advise whether your wet room qualifies for full or partial exemption to VAT if you are disabled.

Of course we also install luxury high specification Wet Rooms at prices that can be significantly less than a bath/shower combination.

Traditional bathrooms are usually installed within 5 days and we never leave you without a loo!

Call now for first class service from a local business offering:

- Free quotation, planning and survey (regardless of the number of meetings needed)
- Installation costs are half those of leading DIY retailers
- Tiles and suites from leading suppliers charged to you at the trade prices available to me
- Removal of all waste at the end of every day
- You pay when the job is complete and you are completely satisfied
- Two year workmanship guarantee

I don't have a website I live in Edwinstowe! Come and see me at 20 High Street where I can show you examples of my work. I can come to if you call either of the numbers above.



WOODHEAD

PERFECT CHOICE FUNERALS



Independent Family Funeral Service

Available 24 hours a day

Perfect Choice Funeral Plans
(bespoke, prepaid and with
finance options available)



Serving Edwinstowe and the
surrounding villages with our
personalised service for over
65 years

Introducing our Perfect Choice Funeral Plans

Thinking about your own funeral is never an easy thing to do. However it can be a great comfort to know that you've taken care of the arrangements, which will provide financial and practical help for your loved ones at an already distressing time.

Anyone can arrange a plan, with no upper age limits, no medical and no health questions to answer. Once you've taken out a plan, all of the costs of our services will be covered when they are needed. Fully protected by the Financial Services Compensation Scheme, the plan also covers disbursements to third parties including crematorium, minister and doctors' fees.

**Please call to arrange a FREE,
no obligation quote or home visit**

We will tailor all elements to suit you and your budget

Visit us at www.woodheadfunerals.co.uk



Funeral Director: Melanie Bainbridge
Telephone: 01623 871101
Mobile (24Hrs): 07817 120487



For all postal enquiries - Woodhead Perfect Choice Funerals, Edwinstowe House, Edwinstowe, Nottinghamshire, NG21 9PR

Woodhead Perfect Choice Funerals is a trading name of Robert Woodhead Ltd Registered Company Number 1360857