

EDWINSTOWE VILLAGE

Issue: 16

NEWS

November 2016 www.edwinstowe.co.uk - info@edwinstowe.co.uk - 01623 824243

Welcome to the Autumn edition of "Edwinstowe Village News,"

The official parish magazine of Edwinstowe,
published by your Parish Council.



There is still some confusion amongst some residents about another newsletter circulated by a local group. It has no connection with your Parish Council.

On another matter, have you visited our website? If not, Google "Edwinstowe Parish Council" and click to access our excellent village website. Do spend a few minutes browsing through it and you'll find all sorts of up to date information about what is happening in the village, photos, a directory of local businesses etc.

If you want a local plumber, builder or decorator, our website is the place to go. Store it in your "favourites." If you run a local business or community group and would like to be listed on the website, please contact the Parish Clerk, Alice Dunn on info@edwinstowe.co.uk

In this edition of "Edwinstowe Village News" you will find all the latest village news, including updates on the new Visitor Centre and the development of the Thoresby Colliery Site. Also, information about the annual Remembrance Day Parade and the Christmas High Street event.

Edwinstowe's
Official Parish Magazine

Published by Edwinstowe Parish Council . Designed by Craig Mariner

High Street Re-surfaced at last!

By the time you read this edition of the magazine, the High Street should have been re-surfaced.

Edwinstowe's County Councillor, John Peck, has been pressing the Highways Department to get it done for three years and finally got agreement for the work to be done this Autumn. John said, "I'm really pleased the High Street has been re-surfaced at long last. It's been a long battle and we were turned down twice, but it really was getting in a poor state because of the heavy use. It took me the same length of time to get Lansbury Road done but we got there in the end."

Getting the High Street re-surfaced and bringing the Ye Olde Jug and Glass building into use are the final pieces in the jigsaw to complete the Parish Council plan to improve the High Street.

The Parish Council has also played its part by improving the floral displays, with the hanging baskets, new flower tubs and island at the junction with West Lane. Also, by re-painting all the street furniture. Very few villages in Nottinghamshire have such a thriving High Street as ours! Also, very few get the litter picked up every day- a credit to our Parish Council staff.



Dead trees on High Street to be removed



Unfortunately two trees on the High Street have died and have to be removed for the safety of the public. It isn't possible to replant trees there, but the Parish Council will install two more flower tubs like the ones outside the library.

Chairman of the Parish Council, Celia Brooks said, "It's a shame the two trees have died, but they do have to be removed. There are still several healthy trees on the High Street though. The good news is that Harworth Estates, have kindly donated two flower tubs the same as the ones the Parish Council put outside the library.

These will add to the wonderful floral display in the summer, which seems to get better every year."

The restoration of the colliery spoil heap

Edwinstowe residents will have noticed the Thoresby Colliery spoil heap changing from the familiar black to a sandy colour as the restoration work progresses.

Half a million tonnes of sand is being spread over the huge landmark. The whole Thoresby Colliery site, including the area which will be developed for housing and jobs, is 473 acres- 23 acres bigger than Sherwood Forest Country Park and substantially bigger than Edwinstowe village. Much of this vast area is the spoil heap and that is being returned to nature.

It is being planted with native, rowans, oaks and birches in the wooded areas and heathers in the heathland areas typical of Sherwood Forest. A network of footpaths will lead from the forest to the top which gives one of the best viewing points in the county. On a clear day, the whole of Sherwood Forest is spread out below and it's possible to see as far as Lincoln Cathedral and into Yorkshire and Derbyshire. As the area matures, it will become a stunning visual and leisure addition to both Edwinstowe and Sherwood Forest.

Nottinghamshire Wildlife Trust are helping the present owners and developers of the Thoresby site to get the best possible use of the site and is expected that eventually, it will become a haven for wildlife.

News from your County Councillor, John Peck



I'm really pleased the High Street has been re-surfaced. It took me two or three years of pushing to get it done. Hopefully, it won't need doing for another twenty years. I think the Parish Council and traders did a fantastic job this year with the floral displays. We've got a village High Street which is the envy of many.

I've been able to use some of my divisional fund to support projects by various community groups including the Little Oaks Playgroup and Thoresby Cricket Club who are putting in a gate to help the safety of children being dropped off at school. I also managed to get the yellow zig-zag lines outside the school extended to where they are needed.

I've had several meetings regarding the proposed development of the Thoresby Colliery site. It's inevitable that the site will be developed and we want jobs for local people. But the scale of the proposed housing development will mean pressure on our amenities.

We must have school places for all our children; a bigger medical practice with more doctors; Ollerton roundabout must be sorted out.

I will continue to make these points at every opportunity, as will your Parish and District Councillors. It's really important we retain the character of our special village.

Peter Borrowdale

P&A Masonry Services

3 Croft Farm Close,
Everton, Doncaster,
South Yorkshire, DN10 5DJ

MEMORIAL SPECIALISTS

Tel 01777 949029 . Mobile 07890589147
E-mail: peterborrowdale@yahoo.co.uk

A family business for over 110 years
Memorials-Lettering-Renovations

Christmas High Street Event



Make a note of the date: Edwinstowe's annual Christmas High Street event organised by the Parish Council, supported by local businesses, will be on Thursday 24th November, from 4:30pm to 7pm.

As usual, the High Street will be closed and there will be stalls, entertainment and of course, Father Christmas. Parish Councillor, Karen Peck of the events committee said, " Last year was possibly our best ever Christmas event and many hundreds of people attended.

Local businesses and community groups all play their part and we think Edwinstowe has the best Christmas Lights switch on event of any village in the area.

Do come along and enjoy it- it's a real community event!"

Proposed expansion of Edwinstowe- *what will it mean?*

Over the next few years, Edwinstowe is going to go through one of those phases of expansion which have happened on several occasions over the last hundred years. The railway arrived in 1896, bringing tourists to Sherwood Forest and woke the village up from a being a small, rural community on the edge of Sherwood Forest.

A dramatic change occurred in the mid 1920's when the Bolsover Mining Company opened Thoresby Colliery and built the model village with all its facilities for the miners and their families. Houses were also being built on Rufford Road and Ollerton Road and later, large estates were built in the Henton and Abbey Roads area and the Lansbury Road area.

In the 1960s there was a further big private development between Mansfield Road and the Forest. In more recent times, there has been the Occupation Lane and the Brocklehurst developments and Friars Park was built in the last few years after the sad decision was taken to close Rufford School. All of these developments have had a significant effect on the village and despite any objections at the time (and there were!) Edwinstowe has eventually absorbed them and been welcoming to new residents. The present population is about 5500- a long way from the few hundred population a hundred years ago.

Over the next ten or twenty years, if all the proposed new developments get built, we could see the population eventually rise to close to 8000- roughly the same as Southwell. If the Thoresby Colliery development gets planning permission, it could mean possibly mean as many as 800 new homes built in phases over perhaps the next ten or more years (plus up to 500 jobs in a business area).

In addition, there are about another 200 houses in the pipeline for various sites around the village: off Ollerton Road; the top of Rufford Road; the High Street at Edwinstowe House; the Welfare site on Fourth Avenue. All of this could put pressure on the village facilities if not managed properly. Many residents and your local councillors have already expressed concerns about such things as traffic, pressure on the Doctors' surgery and school places.

County Council launches on-line support for armed forces veterans

The County Council has launched a new website www.nottinghamshire.gov.uk/supporting-armed-forces which highlights some of the ways the County Council is supporting current and former services personnel and their families through the Nottinghamshire Community Covenant.

It also acts as a portal for the many organisations, charities and public services available in the county,

In fact, the Parish Council objected to the development at the top of Rufford Road and wanted less houses built at Ollerton Road. However, the Parish Council is not the planning authority and the decision on any housing development lies with the planning committee of Newark and Sherwood District Council. Your local councillors can only express the voice of residents.

Your Parish, District and County Councillors have met with developers on several occasions and have made it clear that residents' concerns must be listened to and local Councillors are very clear that the issues of traffic, Ollerton roundabout, school places, the Health Centre, must all be addressed. The Thoresby Colliery development plan does include land set aside for a new school. Edwinstowe's County Councillor, John Peck said, "The County Council has a legal duty to ensure every child has a school place and I am pressing the County to think well ahead to make sure every child in Edwinstowe has a school place as the village population grows."

Residents are concerned about the surgery- there are already plenty of grumbles about how long it takes to get an appointment. At some point in the near future, the Health Service will have to look at how it can expand provision at the Major Oak Practice- could the whole building be used for the doctors for example, or perhaps a new, bigger health centre?

Increased, traffic will be a problem. Walking and cycling routes from the Thoresby Colliery site should be built. Ollerton Roundabout desperately needs upgrading, the traffic lights at our crossroads needs re-phasing with a filter and of course, many of us would love to see the Robin Hood line extended to Edwinstowe and Ollerton if the money can be found.

Parish Council Chair Celia Brooks said, "If all these housing developments come to fruition, then it all needs to be managed carefully. The voices of Edwinstowe residents must be listened to. We acknowledge there will be much needed jobs and there will be new businesses attracted to the village which will safeguard the prosperity of our High Street. However, we will be pressing hard to make sure the real concerns we all have about school places, traffic, the doctors' surgery are all dealt with. All of this must be done whilst retaining the essential character of our lovely village."

including support with: combat stress and mental health issues, welfare benefits, finance and debt, housing and property adaptations and training and careers. Edwinstowe's County Councillor John Peck said "The web site should be very useful to local armed forces personnel or veterans and I do hope they find it useful in finding out where they can find help, advice or information."

Restoration of the Jug and Glass well under way

Everyone in the village must be delighted to see the restoration of the Ye Olde Jug and Glass pub well under way. The builders have been working on it for several months converting the building into one bed room and studio apartments.

As the last remaining boarded up building on the High Street, bringing it back into use and restoring the frontage will make a big difference to the High Street. Coupled with the work the Parish Council has been doing, repainting street furniture, improving the floral displays, plus the re-surfacing of the High Street by the County Council, means our village High Street will be one to be proud of and without a doubt, the best in this part of Nottinghamshire.

Parish and District Councillor, Paul Peacock said, "I'm really looking forward to seeing the Jug and Glass restored. It's in a very prominent position and has been an eyesore for several years.

The building has been a feature of the High Street since Victorian times and I'm pleased to see it restored rather than demolished or boarded up."

Parish Council Chair and District Councillor, Celia Brooks agreed: "When this Parish Council was first elected in 2011, the High Street was beginning to look run down, with several key buildings boarded up. New businesses weren't being attracted to the High Street so several shops stood empty.

Since then, we've worked closely with the planners and developers to make sure buildings are brought back into use."

Parish Councillor, Barbara Starbrook, who has a business on the High Street, "It's about time the Jug and Glass was sorted out.

It's been boarded up too long and has been spoiling the look of our lovely High Street. The Parish Council has been very good at looking after the High Street though and they've done a brilliant job with the flowers this year."



I am Amy Chandler a Community Ranger for the Forestry Commission. I help people engage with their local woodlands.

Following successful forestry operations in Birklands the next stage of harvesting started on the 5th September. The plan is to restore Clipstone Old Quarter to native broadleaf woodland by re-establishing oak and birch.

Restoration of the site will, given time, improve the site's value to nature conservation and enhance biodiversity, as well as provide habitats for many wildlife species.

The trees which are removed will go into the UK timber industry - sawn into planks, used as fencing stakes, manufactured into paper, chipboard or other similar materials. The new trees that grow will help ensure we have a UK timber supply for the future.

As Birklands is a Site of Special Scientific Interest and part of a National Nature Reserve the forest management plan and all operations in this area of Birklands Forest are carefully designed and planned following consultation with Natural England and special interest groups.

Do you enjoy the outdoors, getting stuck in and like a bit of hard work? Whether you want to help and dig in for mountain biking, bring a corporate team to do something different or help out as part of a weekly volunteer group, why not join the Forestry Commission for an assortment of activities where you really can make a difference to habitats and the wildlife living within them.

If you want further information get in touch at amy.chandler@forestry.gov.uk or 03000675443.

Edwinstowe Gala

We had an amazing day with great support from the local community and a huge turnout of people!

Crowds were wowed by the sounds of Pete Jones! the fantastic Zubaidah Belly Dancer & Magpie Magic!

There was an array of stalls and fair rides. There was also an Edwinstowe Gala Prince and Princess competition photographed by Mark Walker Photography. The Winners were-

Prince-Harry Shaw age 10

Princess- Wynter Rose Ebbins

The competition was sponsored by Iconic Bride (Edwinstowe High Street) and Loved Again, Church Farm (Edwinstowe)

The event was topped off with a balloon race, where 400 balloons were released. This was sponsored by Edwinstowe Pet Shop & The Tyre Shop Ollerton with a fantastic 1st prize of a 2 night stay in Brewells Barn in Matlock! After the huge success plans are already underway for next years Gala.

We would just like to thank everyone who helped or attended





S & E TIMBER



- .SUMMER HOUSES
- .DOG KENNELS
- .WENDY HOUSES
- .CHICKEN COOPS
- .RABBIT HUTCHES

SINCE 1980

**HEAVY DUTY BESPOKE
SHEDS/KENNELS
MADE TO MEASURE**

- . Heavy Duty Fence Panels
- . Oriental Garden Features
- . Garden Trellis

Skirting/Architrave

- Handrails • Dado Rail
- Door Casings • Shiplap

Heavy Duty Fence Panels, Concrete Posts & Plinths



All Planed and Rough Sawn Timbers

Decking Kits
10' x 10' – £170
12' x 12' – £250

SLEEPERS!

– New & Reclaimed

Natural Sandstone Paving –
Patio Packs from £17.50sq/m

- Matchboard • Floorboards
- T & G Cladding • Loft Insulation • Beading

- Wide Range of Plywood • Chipboard
- Eliotis • Plaster Board • M.D.F.

UNIT 45, TRENT ROAD, BOUGHTON INDUSTRIAL ESTATE SOUTH
Telephone: 01623 861364
OPEN:- 8am – 5pm Mon-Fri; 8am – 3pm Saturdays

Stockists of
**PICNIC TABLES &
GARDEN BENCHES**

MAJOR OAK MEDICAL PRACTICE PATIENT PARTICIPATION GROUP



PPG Contact

There are several ways for patients to get in touch with the Patient Participation Group; by speaking to someone in reception, by letter or by completing a Friends and Family Test card available on the left hand side of the reception desk as you leave the surgery. The content of any of the above will be discussed (names are not disclosed to the PPG) and action taken.

Did Not Attend

Please remember to help the practice save money and give other patients a chance to take up your unwanted appointment by cancelling if you find you cannot attend.

Warfarin Talk

A talk for patients on Warfarin use planned for the summer did not take place due to the heavy workload at the practice. It is hoped the surgery will be able to do this in the winter months.

Flu Jabs

Remember that flu jabs from your GP practice are free if you are over 65 years old or under 65 with a long term condition, for children aged 2 to 4, if you are pregnant or if you are a carer. If you have missed any of the clinics run through September/October contact the surgery for further information.

Well Done

After the practice questioned aspects of the 2015 CQC report the Major Oak surgery rating has recently been upgraded to good.

M.H. SERVICES

“Over 20 years experience”

Patios & Drives

Fencing

Trees/Hedges

Drainage

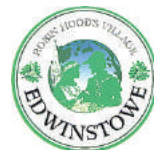
“For a tidy, reliable and friendly service, please contact Mark Hayden”

Phone: 01623 824425

Mobile: 07725 649789

Email: mandshayden@aol.com

Edwinstowe Parish Council
Working to make a difference



**ORDINARY MEETING
DATES 2016/7
- TUESDAYS**

**MEETINGS
COMMENCE AT
7.00PM
OTHERWISE
UNLESS STATED**

**8 November 2016
13 December 2016 (if required)
10 January 2017
14 February 2017
14 March 2017
11 April 2017
9 May 2017 (including AGM) - Commences
6.30pm**

Look out for details of other Council meetings on the Village Hall noticeboard and on the village website www.edwinstowe.co.uk

Rotary Club of Sherwood Forest

Dukeries Academy student Tom Reilly, 15 years old from Edwinstowe, delivered a very interesting talk to members of the Rotary Club of Sherwood Forest on 22nd June 2016. He spoke about his experience of taking part in a Rotary Youth Leadership Award (RYLA) weekend course in Derbyshire.

Tom was enthusiastic and thoroughly enjoyed the various activities he undertook over the weekend. These included rock climbing, caving, biking, mini Olympics and team working on a range of other outdoor activities.



Tom said he found the experience both challenging and enjoyable and the experience has given him the confidence to work outside his comfort zone. Rotary Club members were left in no doubt that if offered the chance Tom would love to take part again and do more walking over the Dales.

Tom strongly recommends other young people to take advantage of forthcoming RYLA weekends. President John said the Club was very proud of Tom's achievement and he was a credit to both his family and the Dukeries Academy.

The Rotary Club of Sherwood Forest would be advertising future leadership courses in the local press.

Remembrance Day Parade

Sunday 13th November 2016

Assemble at Fourth Avenue Car Park
09.20 (on Fourth Ave near Nursing Home)

On Parade
09.30
March Off
09.40
Arrive St Mary's Church
09.50
Service Commences
10.00
Service Ends
10.40
Fall In
10.45
March Off
10.50
Re-Form War Memorial
10.55

Memorial Service Commencing with:

The Act of Remembrance and Roll of Honour- Minister
Then Shall Be Said: The Act of Homage

"THEY SHALL GROW NOT OLD, AS WE THAT ARE LEFT GROW OLD AGE SHALL NOT WEARY THEM, NOR THE YEARS CONDEMN AT THE GOING DOWN OF THE SUN AND IN THE MORNING WE WILL REMEMBER THEM".

Response by all:-
WE WILL REMEMBER THEM

The Last Post
2 Minutes Silence

Could anyone who wishes to order a wreath, or to lay a wreath they have provided themselves please inform the RBL Secretary, Phil Jones on (01623) 824787



"WHEN YOU GO HOME, TELL THEM OF US AND SAY, FOR YOUR TOMORROW WE GAVE OUR TODAY"

Laying of wreaths
Service Ends With The National Anthem & the Final Blessing
March Past the Saluting Base- High Street
Halt at Nightingale Nursing Home
Dismiss

Debt is the most common money query in Newark and Sherwood says Citizens Advice Sherwood and Newark

Citizens Advice Sherwood and Newark has helped people with 7047 money issues in 2015/2016, new figures reveal.

People wanting to make the most of their finances are calling on Citizens Advice Sherwood and Newark for help and support with a range of money queries, from information about income tax to questions on savings and investments.

The service also helps people improve their money skills - offering tips on budgeting and getting the best deals. In 2015/16 the charity helped 142 financial capability clients, helping people develop their financial management skills this year. Nationally Citizens Advice has helped 168,500 people with money management and financial services issues in the last year.

Lesley Barrick, Advice Service Manager at Citizens Advice Sherwood and Newark said: "We help people make the most of their finances and plan for the future. As well as seeking help to understand their finances, increasingly the people we help want the skills to manage their money in different ways. This is really important because with so many financial options available, its crucial people are equipped with knowledge to make the right choices about their money. From guidance on budgeting to help with online banking we offer a range of support to help people understand their financial circumstances, and plan for tomorrow."

Citizens Advice offers general advice on a wide range of money issues, from queries about insurance and mortgages, to information on wills.

In addition to general advice, we also offer more in-depth sessions in the following areas:

- ✗ Financial capability - building skills such as budgeting and getting the best deals
- ✗ Pension Wise - guidance to anyone over 50 with a defined contribution pension
- ✗ Energy Best Deal - getting the best deal on your energy and how to save energy to cut down your bills

Ok Blinds
Affordable Stylish & Quality Blinds Made To Measure
Edwinstowe, Notts
Verticals Venetians Wooden Pleated
Romans Rollers
okblinds.weebly.com
info.okblinds@gmail.com
David
07555618555
Like us on Facebook
FREE Measuring & Fitting

The top three money issues in 2015/16, the charity has helped people with are:

1. Council Tax arrears 1073 issues
 2. Credit, store and charge card 653 issues
 3. Unsecured personal loans 611 issues
- Queries included dealing with debt repayments, fuel, rent and parking debts.

**citizens
advice**

Anyone needing help with their finances can get in touch with us or visit **DROP IN ADVICE SESSIONS** at:

**New Ollerton (5 Forest Court)
NG22 9PL - Monday, Wednesday
& Friday: 9:30am – 2:30pm**

**Newark (Keepers Cottage,
Riverside Park, Great North
Road) NG24 1BL - Tuesday &
Thursday: 9:30am – 2:30pm**

Advice Line: 0344-411-1444 (Monday to Friday 10am to 4pm)

www.citizensadvice.org.uk

THE DUKERIES SINGERS

Although we are experiencing an Indian Summer as I write, I do feel we are moving quickly into Autumn. Harvests are gathered and the nights are quickly drawing in. A guarantee to lift the spirits is singing, a really therapeutic activity. We sing every Wednesday night from 7-30pm. until 9-30pm in or above the Concert Hall at the Dukeries Academy. This is best accessed via the Leisure Centre entrance and car park. We love to encourage new voices and you would be most welcome. All you need is a wish to enjoy singing with a group of like minded people.



Our events programme, so far up to Christmas; Friday 28th October 2016 A joint concert with "Les Baladins des Bords de L'Indre from Tours, France, at East Drayton Church.

Thursday 24th November 2016 Carol singing at the Edwinstowe High St Christmas Event. Time to be confirmed.

Saturday 17th December 2016 The Annual Edwinstowe Christmas Concert in Edwinstowe Village Hall at 7-00pm.

Sunday 18th December 2016 A Capella Carol Singing in the afternoon at Sherwood Forest Visitor Centre. Time to be confirmed.

If you would like to us to perform for your celebrations or fund raising events, our Concert Secretary Phil would be delighted to hear from you on 01623 822070. More details about the Choir can be found on our website. thedukerliessingers.com

Have a lovely colourful and harmonious Autumn.

Jan

EDWINSTOWE BOWLS CLUB

ANOTHER SEASON OVER! 4 MONTHS PLAY THEN 8 MONTHS WONDERING WHETHER WE STILL HAVE ENOUGH BOWLERS TO FULFILL OUR FIXTURES?

AS I LOOK THROUGH THE TEAMS STILL IN EXISTENCE THERE IS NO CHURCH WARSOP NO WELBECK NO MANSFIELD COLLIERY NO SHIREBROOK SPORTS NO MANSFIELD RACECOURSE. WHEN THE PITS CLOSED FOLLOWED BY THE WELFARE CLUBS THESE CLUBS FELL BY THE WAYSIDE! WHEN OUR VILLAGE WELFARE CLOSED OUR MEMBERS VOTED TO CHANGE THE NAME TO EDWINSTOWE BOWLS CLUB.

THIS HAS NOT BROUGHT ENOUGH NEW BOWLERS. ONE NEW GUY STARTED 3 WEEKS AGO AND ONE NEW LADY SAID SHE WOULD BE HAPPY TO COME AGAIN IN 2017.

NONE OF OUR MEMBERS ARE GETTING ANY YOUNGER. PLEASE MAKE IT YOUR NEW YEARS RESOLUTION TO CONSIDER GIVING IT A GO. WE ARE WELL SUPPORTED BY THE PARISH COUNCIL AND JUST LACK NEW MEN OR LADIES TO JOIN OUR HAPPY BAND. WE LOOK FORWARD TO YOUR SUPPORT. RING ROD @ 822448. FOR INFORMATION.

High Street, Edwinstowe

01623 825062

Find us on Facebook 



- **Fully licensed**
- **Most work undertaken**
- **Bespoke designs**
- **Walk in slots available**

info@tattoosbysugar.co.uk www.tattoosbysugar.co.uk

Would a £200 win look good to you?

That is the average annual saving that your local Citizens Advice has been finding for people who took up our offer of help with their energy bills. The biggest gain achieved so far for an individual client was £823.

We have also helped resolve longstanding complaints with energy providers and to correct bills, with several clients seeing hundreds of pounds wiped off the amount they were told that they owed. If your bills have suddenly increased, let us know - one client happily saw a £1,200 bill melt away to nothing as a result of our intervention.

We are concerned that a number of prepayment energy customers have told us about representatives going from door to door in the area making appointments for smart meters to be installed. In some cases, householders have agreed, thinking that this was part of the national smart meter roll-out advertised on TV, but then discovered they have actually switched suppliers. We understand that it is difficult for people with no internet access to do their own research and they, in particular, may feel pressured. If you are targeted, you could call your existing supplier to check before you agree. If this has already happened to you and you are not happy, let us know.

Yes, we have been working hard over the past 9 months helping people just like you to sort out their energy bills but we want to see more of you because we know that lots of people in our area are still paying too much. Long summer (technically) days may seem like a relief from worrying about gas and electricity bills but now is the time to get help with switching your deal so that you can appreciate the savings this winter and have a bit more money in your pocket for when the kids are back at school and in time for Christmas. If you have a problem and your energy supplier is not listening, or you just want help checking what options are available for you, give Sherwood & Newark Citizens Advice a call on 01623 861769.

Citizens Advice offers general advice on a wide range of money issues, from queries about insurance and mortgages, to information on wills.

In addition to general advice, we also offer more in-depth sessions in the following areas:

- Financial capability - building skills such as budgeting and getting the best deals
 - Pension Wise - guidance to anyone over 50 with a defined contribution pension
 - Energy Best Deal - getting the best deal on your energy and how to save energy to cut down your bills
- Anyone needing help with their finances can get in touch with us or visit **DROP IN ADVICE SESSIONS** at:

New Ollerton (5 Forest Court) NG22 9PL - Monday, Wednesday & Friday: 9:30am - 2:30pm

Newark (Keepers Cottage, Riverside Park, Great North Road) NG24 1BL - Tuesday & Thursday: 9:30am - 2:30pm

Advice Line: 0344-411-1444 (Monday to Friday 10am to 4pm)

www.citizensadvice.org.uk



**EDWINSTOWE
AERIAL & SATELLITE
SPECIALISTS**



Freeview / Freesat / Sky

SINGLE POINTS TO FULL SYSTEM.
FM / DAB AERIALS
RETUNES / SET UPS / TV'S WALL MOUNTED
EXTRA TELEPHONE POINTS

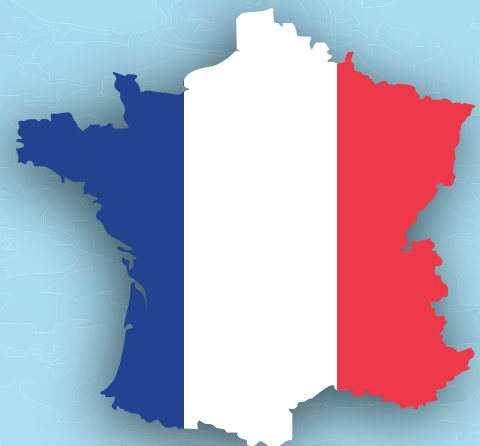
**FULLY QUALIFIED ENGINEER WITH
30 YEARS EXPERIENCE**

10% DISCOUNT FOR OAP'S



CALL FREE ON: 0800 3345650

**7 DAY SERVICE, SAME DAY IF REPORTED BEFORE 10:30AM
NO VAT TO BE SCARED ABOUT**



I read the Parish newsletter recently and was particularly interested in an article which mentioned a possible twinning association between our village and Robiac-Rochessadoules in France. I'd taken part in various exchange visits over the years and contacted the Parish Council to let them know that this was something I'd really like to get involved in.

And so it was that I found myself joining our French visitors on Friday evening, just after coming back from my holiday.

This initial meeting was very brief – and slightly awkward - as the group was just about to have their evening meal. However, as soon as we met up again the following day, any difficulties (real or imaginary) were a thing of the past and we were soon finding lots to talk about. We spent most of Saturday together and, afterwards, everyone said what a really good time we'd had at the Robin Hood Festival.

The following morning gave us chance to participate in a service at St Mary's Church and also to look at the latest plans for the new visitors' centre at Sherwood Forest. Although there was a more formal atmosphere than the previous day, I was glad to have been part of it and to find out more, myself, about Edwinstowe.

Throughout my time with Henri and Christine, I attempted to use some of my 'schoolgirl French' but felt safe in the knowledge that Jane or Tony were on hand to translate if and when things got difficult (which was often – we still wrote on slate when I was at school – well, almost). And at least the Mayor and his wife were very encouraging and didn't ridicule me about my 'pigeon French': best of all, it broke the ice! By Sunday morning, Henri seemed more relaxed and was, himself, attempting more English than he had done on the previous day.

Having visitors to Edwinstowe always gives us the opportunity to promote our village and I think that, as a community, we probably surpassed our French visitors' expectations on this occasion.

Coming from a traditional coalmining community themselves, I learned that they have experienced similar issues to us, including subsidence problems and the closure of their colliery: although their coal production ceased some 30 years ago, they showed me a photo of their village monument – a massive miner's lamp – which seems to have been placed at the centre of their village: evidence, I thought, of their continued pride in their industrial past. In contrast to their own experiences, I believe our visitors were particularly impressed with how quickly we seem to be moving on with our plans after the huge loss of our own pit, Thoresby. However, I'm sure that their villagers will have developed a positive new way of life since the closure of their colliery and I think we could learn a lot more from each other by comparing our experiences and swapping ideas. This visit has left me feeling really enthusiastic about developing new, long-lasting friendships between people of all ages and, providing enough people want to get involved, it could be the start of a brilliant new adventure for our village.

Wendy Marsh



D.A Williams Electrical Contractor

REWIRES, SHOWERS, INTRUDER ALARMS
SECURITY LIGHTING
& GENERAL ELECTRICAL WORK UNDERTAKEN

TEL: 01623 836517
07719999781

The Visit of the Mayor of Robiac-Rochessadoule and his Party to Edwinstowe

Earlier this year Jane Churly, an English resident of Robiac-Rochessadoule in the South of France, contacted the Parish Council with a view to forming links with Edwinstowe.

Henri, the recently elected Mayor of the village, his wife, Christine and Jane and her partner, Tony visited Edwinstowe in early August. They stayed locally and had the opportunity to meet lots of Edwinstowe residents at a reception held for them at Edwinstowe House.

People from our churches, youth groups, Brownies, Guides, Patient Participation Group, British Legion, Councillors, Sherwood Forest Trust, and many other organisations welcomed them to our village.

Over the next three days our visitors were able to enjoy the Robin Hood Festival, trips to St Mary's Church, the Library, Fire Station, Youth Hostel, High Street, Thoresby Colliery site and Ollerton Road allotments. They were most impressed with everything they saw.

Even more importantly they were very taken with the kindness and helpfulness from all the people they met. They even met the real Sheriff of Nottingham when they had a Grandstand seat for the jousting on Saturday afternoon.



There are some people interested in developing the links with Robiac-Rochessadoule and if you would like more information please contact the Parish Council. We hope we can develop our links within the village, we have a lot in common and can also learn from each other

Thank you to all who made the visit so enjoyable with a particular mention to Alice Dunn, the Parish Clerk, Wendy Marsh and the caterers for the Edwinstowe House, Jason Wilson Culinary Delights. So many others made the visit memorable and I much appreciate their efforts and the time they gave us.

Vive La France... Vive La Grande Bretagne... Vive L'entente cordiale!

Many thanks to you all for organising such a successful, interesting, thoughtful and full programme whilst we were in Edwinstowe.

Please pass our thanks onto all those who attended the Reception on Thursday evening, the Harworth Estates team at Thoresby Colliery, the team of firemen, and of course the Sheriff of Nottingham (the real one!). It was clear that everybody that we met and to whom we talked, were proud of what

they were doing in Edwinstowe and we recognise how generous everybody was, in giving their time to us.

We felt very welcome, at both formal and informal occasions, and we wish to say that all those that we met in Edwinstowe are always welcome to come to Robiac-Rochessadoule, whether it be a personal or semi-official visit!

Nos meilleurs sentiments,

Henri, Christine, Jane and Tony



Hang a bauble on the Village Christmas Tree

Bring your bauble to the
High Street Christmas Event
on Thursday 24th November

After Christmas baubles will be kept in the Parish Council office until Friday 13th
January 2017



Royal Oak to be re- furbished



The Royal Oak was recently taken over by Everards Brewery, who also own the popular Greendale Oak in Cuckney. The pub is closed for two months until early December to undergo an extensive refurbishment. A restaurant area will be created to serve a good quality menu.

Villagers will no doubt be delighted to see this landmark pub in the centre of the village being given a welcome re-vamp as it's had a chequered history in the last two or three years. Parish Councillors have welcomed the upgrade. Along with the development of the Jug and Glass building, the re-surfacing and the work the Parish Council has been doing on the High Street, we can surely boast the most attractive High Street of any village in the area. It's ready to not only serve local residents, but also to attract new visitors when the new Sherwood Forest Visitor Centre opens in 2018.

RSPB submits plans for new visitor centre at Sherwood Forest

An RSPB-led consortium has submitted the planning application to Newark and Sherwood District Council for a new visitor centre at Sherwood Forest.

The consortium successfully won a bid in August last year as part of a Ross Frazer, RSPB Project Manager, said: "We're very happy to reach this important stage in the planning process. We hope that people will see that we've listened to and incorporated their feedback, and this planning application brings us one step closer to realising our vision for a brilliant new visitor centre at Sherwood Forest." procurement process organised by Nottinghamshire County Council to design and build the new centre and manage Sherwood Forest Country Park and National Nature Reserve from early 2018.

If approved, the proposed work would see a modern facility built at a site agreed by Nottinghamshire County Council, at Forest Corner in Edwinstowe. This would be followed by the removal of the current 1970's visitor centre and car parks, and that site would then be returned to nature.

GUITAR LESSONS

ACOUSTIC FOLK.....CLASSICAL.....SPANISH

Structured Learning complete with Lesson Plans

£10 per lesson

Ian Wise B.A.(Hons)., Dip:NCTD., Teachers' Cert: (London)

tel: 823535

The plans for the new visitor centre will be available to view via the planning portal on the Newark and Sherwood District Council website:

<http://www.newark-sherwooddc.gov.uk/planningapplications/>



Rufford Recruitment Ltd

The new business, which is based at the bottom of the High Street, is aiming to provide employment to the village and surrounding areas.

Sectors which will be covered are:
Administration/Construction/Engineering/
Logistics/Production/Manufacturing/Rail/
Sales & Marketing/Traffic Management

Jade said "We are extremely pleased to have opened an office in the area, and hope that we can reduce the unemployment figure. Feel free to call in our office anytime between 9am-5pm, Monday to Friday to register your interest."

Rufford Recruitment Ltd had their grand opening this month, opened by the two local directors Jade and Kevin! Their was a fantastic turn out from local residents, businesses and councillors.



Rufford Recruitment Ltd
T: 01623 237540
E: info@ruffordrecruitment.co.uk
W: www.ruffordrecruitment.co.uk

1st Edwinstowe Scout Group

The Scouts started the new term with a camp at Ollerton Scout Centre where they made robots out of cardboard boxes to fit a scout then played robot wars. A good and tiring weekend was had by all.

Explorer scouts now meet on a Thursday evening at Ollerton Scout Centre due to small numbers, for more information contact Sue on the number below. Cubs are celebrating 100 years of Cub Scouts and have had a very busy year so far, they went to London with County Cubs on the 18th of Sept and will be renewing their promise on 16th December with Mansfield District Cubs.

Beavers are also celebrating a big birthday this year their 30th. They have had a day camp at the Church Rooms where they did outdoor cooking and camping skills. As a special treat we had a visit from Hawks of Steele and Three Meerkats. They were very funny and the Beavers enjoyed playing with them. In October they will be going to Notts County Beaver scouts big birthday party at Sherbrook Camp Site.

Look out for Scout Post boxes and stamps in local shops in November. The scouts, cubs and beavers and their parents deliver Christmas cards to the surrounding areas.



Please see the leaflets with areas that we cover. We work in partnership with Ollerton, Warsop and Bilsthorpe scout groups. All proceeds go back into these scout groups for the young people. Thank you to all the shops that sell stamps and collect the cards and we hope you can support us again this year.

Scouter in Charge Sue Cocking
01623 823761. Please leave a message





Can you tell us anything about this photograph?



Please contact the Parish Council Office

Thank You

We have received donations for the High Street planters and Thoresby Colliery Memorial from various business/organisations, including Centre Parcs and Edwinstowe Pharmacy.

Edwinstowe Parish Council would like to thank everyone who has kindly donated. If you would like to sponsor a planter or make a donation towards the Thoresby Colliery Memorial, **please contact the Parish Council Office.**

EGMANTON PLANT HIRE

For a full list of hire equipment please see:

www.egmantonplanthire.co.uk

ANDREW BANKS

Phone/Fax: 01777 872316

Mobile: 07971 627588

VAT registered

Please see our website for current price list

Allotments in Edwinstowe

We are happy to report that both allotment sites are thriving.

All plots at Ollerton Road are now taken, but if you are interested in a plot please contact Alice on 824243 and your name will be added to our waiting list. Boy Lane Allotments has vacant plots. Again if you are interested, contact Alice.

Councillor's monthly visits to the Ollerton Road allotments are enjoyable and positive. We are very encouraged by the way the vast majority of plots are maintained.

In the past allotment holders used panels which may contain asbestos as fencing. The Parish Council commissioned a survey to clarify the situation with regard to these panels. They are safe, if undamaged. It is possible for plot holders to dispose of these safely. Alice will explain how this could be done.

Both allotment sites are a credit to the village and we are encouraged by the effort put into growing fresh produce.

Interested
**In An
Advert**

Contact
The Parish Council
01623 824243

Or
info@edwinstowe.co.uk

Business card sized advert - £25

1/4 page advert - £50

1/2 page advert - £75

Full page advert - £100

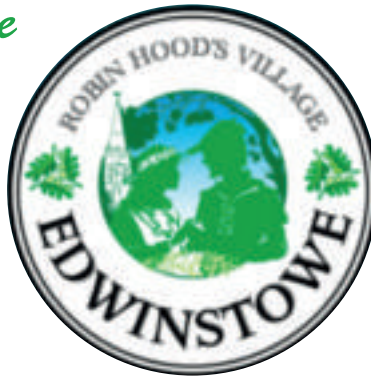
Inside front or back cover / full page - £200

Outside back cover / full page - £225

Edwinstowe Parish Council

Working to make a difference

Tel: (01623) 824243
info@edwinstowe.co.uk



Clerk - Alice Dunn
Administration - Nicola Priestley

Mark Spencer MP

Parliamentary
 House of Commons,
 London, SW1A0AA

Tel: 020 72197143

Email:
mark.spencer.mp@parliament.uk

Constituency
 Sherwood Constituency
 Office, Room 3, Under One
 Roof, 3A Vine Terrace,
 Hucknall, Nottingham,
 NG15 7HN

Tel: 0115 9681186
Web/Social media
www.markspencermp.com
[@mark_spencer](https://twitter.com/mark_spencer)

C.Clr John Peck

Mobile: 07748181719

Email:
cllr.john.peck@nottscc.gov.uk

The Parish Council is
OPEN TO THE PUBLIC on:

Mon-	10.00 am / 2pm
Tues-	10.00 am / 2pm
Wed-	10.00 am / 2pm
Thur-	10.00 am / 2pm
Fri-	10:00am / 12pm



Cllr Celia Brooks - Chairman
 & District Councillor



Cllr Dennis Tattersall -
 Vice Chairman



Cllr John Peck
 & County Councillor



Cllr Chris Ayre



Cllr Liz Benson



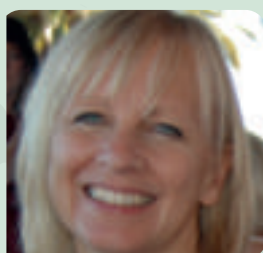
Cllr Michael Brown



Cllr Terry McLaughlin



Cllr Paul Peacock
 & District Councillor



Cllr Karen Peck



Cllr Barbara Starbrook



Cllr Alison Troop

**Councillors Can Be Contacted Via
 The Parish Council Office**

How well do you know your NHS?

We need your help!

The organisations responsible for planning and managing the NHS budgets in the Mansfield and Ashfield and Newark and Sherwood areas have issued a warning about a financial shortfall in 2016/17. This means savings are at the forefront of the Mansfield and Ashfield and Newark and Sherwood Clinical Commissioning Groups (CCG's) minds.

Increased emergency hospital activity and prescription related costs are part of the reasons for the additional financial pressures.

Make the right choices

A visit to A&E costs your local NHS an average of £120

A visit to your GP costs your local NHS an average of £48

Self care and a visit to your pharmacy does not cost your local NHS anything meaning money can be spent on essential health care services. Think do I REALLY need A&E?

Did you know £1.2 million was wasted on unused medicines last year across mid Nottinghamshire? Did you know it costs your NHS on average £120 for an A&E visit? Did you know it costs your NHS £0 if you self-care? With this in mind, the CCG's are urging people to use their NHS wisely.

A&E departments are routinely reporting that patients are presenting with symptoms that could have been treated at home, at their GP practice or with some advice from a pharmacist.



Don't waste medicine-top tips

Talk to your pharmacist about your repeat medicines.	1
Think what do I need this month? Will I take it?	2
Reorder only when you are happy that you really need more.	3
If you don't need the medicine, please don't order it.	4
You can choose to order your own prescriptions when you need them pharmacies don't have to order for you.	5

NHS Mansfield and Ashfield CCG
 Hawthorn House, Ransom Wood Business Park
 Southwell Road West
 Rainworth
 Mansfield
 NG21 0HJ
 Telephone: 0300 300 1234

NHS Newark and Sherwood CCG
 Balderton Primary Care Centre
 Lowfield Lane
 Newark
 NG24 3HJ
 Telephone: 01636 594817

SHERWOOD FOREST PROBUS CLUB

The Sherwood Forest Probus Club, Edwinstowe held their monthly meeting on Thursday the 6th October at the South Forest Complex, Edwinstowe. The 17 members attending were welcomed by the President Mrs. D. Roker. The speaker, from the Ollerton and District Economic Forum Garden at the Forestry Holding site near Sherwood Pines, gave an excellent talk (accompanied with computer pictures) and explained in detail the workings of the garden and the people who volunteer to help and look after the produce. The next Club meeting is on Thursday 2nd November and the Christmas lunch on the 1st December.

Anyone requiring further information and are interested in attending the meetings or joining the Club please contact Mrs. Roker on 01623822220 or Mr. K. Wardle on 01623823006.



Jeffrey Rose Accountants



Jeffrey Rose Accountants is dedicated to offering a personal and professional service throughout the East Midlands; with over 25 years of industry experience and a wealth of knowledge to share, we can help grow your business to a more fruitful future.

Our team appreciate that it's not always easy understanding the financial world or the intricately woven web of business development, we deliver the support you need and take the time to listen to our clients so you can focus on success.

We help small and medium sized business with a range of services:

-  Accounts
-  Business start up
-  C.I.S
-  Payroll
-  Financial advice
-  Taxation
-  Book-keeping
-  Self-Assessment
-  VAT

Whether you are self-employed, a sole trader, partnership or a limited company, we can tailor our skills to suit your needs. From the construction industry to the beautifully boutique, we have helped countless clients from chocolate shops to plumbers find a world of greater opportunity.

Unlock your potential and contact us today for a completely FREE consultation

Web: www.jeffreyroseaccountants.co.uk
Email: kim@jeffreyroseaccountants.co.uk
Mobile: 07710 430 593
Phone: 01623 880 291



WHAT GOES ON HERE AT THE ABBEY ROAD COMMUNITY CENTRE

MONDAY ORCHID FRIENDSHIP GROUP	<u>STARTING AT 9.AM</u>
MONDAY EVENING EVERGREEN CLUB BINGO	<u>STARTING TIME 6.PM</u>
WEDNESDAY EVENING EVERGREEN CLUB DOMINOES/BINGO	<u>STARTING AT 6 PM</u>
THURSDAY EVENING WHIST GROUP	<u>STARTING AT 6.PM</u>
FRIDAY AFTERNOON ABBAY ROAD ART/CRAFT GROUP	<u>STARTING AT 1.PM</u>
FRIDAY EVENING EVERGREEN CLUB BINGO	<u>STARTING AT 6.30.PM</u>
TENNANTS AND RESIDENTS GOUP	<u>EVERY 2ND TUESDAY IN THE MONTH AT 6.PM</u>
PLEASE CONTACT 825808 FOR MORE INFORMATION	

Abbey Road Art & Craft Group Celebrating 10 years

We are now discussing how we would like to celebrate our tenth anniversary year which starts in January 2017. At least half of our group are founder members who have become close friends as well as craft/art enthusiasts sharing their interests. Over the years we have had boat trips, seaside outings, a week-end away, meals out together besides meeting each Friday afternoon to share ideas and pass on tips to each other.

I have had so much help from our members and I would like thank to them all for making tea in their turn (the system works VERY well}, the ladies who have given their time to run our lottery, the ones who help with the raffles which have raised funds for local charities and to our supplier of craft goodies who keeps everyone happy with her wide variety of craft stash. Our weekly subscription has remained unchanged at £1.00 per week since the group was formed and we will able to maintain this for the foreseeable future.

We are now able to welcome newcomers to our group, both artists and card makers, should anyone care to visit to learn more about the group, please call in any Friday afternoon between 1pm and 3pm or telephone 01623 825518.

Barbara Freer

KEY BUILDING SUPPLIES LTD

• For All Your Building & Landscaping Needs •

GETTING YOU READY FOR WINTER...

NOW IN STOCK ... HEATER GAS, BUTANE, HOUSE COAL, SMOKELESS FUEL, GAS, LOGS – DRY SPLIT LOGS, BULK BAGS & NETS, KINDLING, ROCK SALT, PARAFFIN, SNOW SHOVELS & FIRE ACCESSORIES. CRANE & TIPPER LORRIES AVAILABLE FOR DELIVERIES...



10% OFF
COAL & SMOKELESS
(COLLECTION ONLY)



ALSO: BLOCKS, BRICKS, CEMENT, AGGREGATES, PLASTERS AND BOARDS, LINTELS, ROOFING MATERIALS, UPVC FASCIA'S, ALL SHEET MATERIALS INCLUDING PLYWOOD, M.D.F ETC, STUDDING, SKIRTING, DOOR FRAMES, R.S.T, P.S.E, DECORATIVE GRAVELS, PAVING, RAILWAY SLEEPERS, PATH EDGINGS, DECKING, ROCKERY STONE...

Brick cutting service,
also brick slips & arches:
www.keybrickcutting.com

ROAD C, BOUGHTON INDUSTRIAL ESTATE, BOUGHTON, NEWARK, NOTTS, NG22 9LD. TEL: 01623 861735

OPENING HOURS: MON-FRI: 7.30AM - 5PM & SAT: 7.30AM - 2PM

KEYBUILDINGSUPPLIES@HOTMAIL.CO.UK • WWW.KEYBUILDINGSUPPLIESLTD.COM

Goff's *This Christmas*

Of Edwinstowe

goff's festive roast

Succulent Turkey breast with our own special forcemeat filling of sage & onion, apricots and home made sausage meat dressed with streaky bacon and herbs.

"a winner every Christmas" from £20 (feed 4-6)

free range local turkeys

Superb fresh birds from a local farmer, some bronze, some traditional white.

Not to be mistaken with mass farmed turkeys!!!

fresh meats

21 day minimum matured beef Sirloin, topside, rib roast for superb flavour and taste or try our boneless stuffed pork roast with cranberry & orange forcemeat.

game to eat

3 bird roast- boned Guinea fowl stuffed with Gressingham duck breast, pheasant and a seasonal stuffing wrapped in streaky bacon and herbs £24.50.

Locally shot Pheasant, Gressingham duck, Traditional Geese.

cooked to perfection

Goff's Festive roast ham - English slow roasted ham joint topped with Cranberry & fresh orange glaze individually prepared to our time honoured family recipe, cut to your requirements.

Hand Made pork pies, Turkey & Cranberry pie and more!

selection of artisan english cheeses.

"All you could wish for a fantastic Christmas meal from your village, pop in to discuss your requirements with our passionate team" or log on to our website or email for more info!

FACEBOOK - Goff's Butchers

Goff's Butchers, 43 High Street Edwinstowe tel 01623 824598

email goffsbutchers@gmail.com website www.goffsbutchers.co.uk

A.W. LYMN

The Family Funeral Service

Owned & managed by the Lymn Rose Family



- 24 hour service from our staff
- Rolls-Royce & Bentley fleets
- Chapel of rest & car parking facilities at all of our locations
- Pre-paid funeral plans
- Finance terms available
- Coffin & casket selection room

Quality at affordable prices, please call to arrange a free, no obligation, quotation or home visit

Ollerton

Manvers House, 5 Sherwood Drive, Ollerton NG22 9PP

Tel: 01623 860 045

www.lymn.co.uk  /awlymn  /awlymn



"Our family serving your family since 1907"



Lynds Close Luncheon Club

The club saw a temporary move over Autumn while Newark and Sherwood Homes refitted the centres kitchen, so during this time the club met to enjoy some wonderful Lunches at The South Forest Complex, giving the kitchen volunteers a well-earned break from duties!

We did leave with our fingers crossed though as we wanted to be back 'home' for our 3rd Birthday Celebrations on the 3rd of November.

Thursday the 23rd June we all enjoyed a day trip to the coast, a big thankyou to the Dukeries Lions Club for buying our Fish and Chip Lunch.



July saw us excited as we were awarded with a Big Lottery Grant allowing us to purchase some new equipment, including a Bain-Marie, water boiler and microwave for the kitchen and crockery, cutlery and table wares for the dining room.

A big thankyou to the Rotary Club for their kind donation of £200, this will be spent on taking the members to a Christmas Panto in December. (Oh yes it will!)

Our Halloween Pie and Pea Medium Night is a sell out again in the Village Hall, a most enjoyable night.

Thursday the 10th of November sees another of our great themed lunches with Poppies for Remembrance. This year will be a first for us, to lay a poppy wreath on the Cenotaph the following Sunday.

We owe a big thankyou to many people in the community, but not enough space to list everyone. But for now **THANKYOU!**

NEWS FROM YOUR LOCAL TOURIST INFORMATION

Autumn is upon us now but that doesn't mean we have to hibernate! Newark & Sherwood area and further afield has a lot to offer in respect of places to visit and events to attend. Here are just a few:-

Kelham Hall will be holding a Firework Extravaganza on Sunday 6th November with a choreographed firework display and traditional bonfire treats. Over the weekend of Saturday & Sunday 12th & 13th November, is Kelham's Big Vintage Festival between 10.30 and 3.30 with stalls, music and much more. On Saturday 26th and Sunday 27th November visit the Christmas Fayre with over 50 stalls throughout the hall- a chance for a bit of Christmas shopping whilst enjoying mulled wine and hot chocolate and listening to Christmas carols! Tel: 01636 980000 for more details.

Thoresby Park will host their Winter Foodfest on Saturday 19th and Sunday 20th November & the Winterfest on Saturday 26th & Sunday 27th November. Both events are very popular and will be sure to get you into the Christmas spirit! Tel: 01623 822009 for further information.

From 19th November until 23rd December you can get the kids out and about with the Santa Trail at Rufford Country Park and visit Santa in his Grotto. St. Nicholas will arrive at Sherwood Forest Country Park from 26th November. See www.nottinghamshire.gov.uk for further information or give us a call.



You may want to book into the ever popular Savile Restaurant at Rufford Park for Christmas lunch (now booking for Boxing Day and New Year's Day) – Ring
Tel: 01623822944.

Don't forget it is Panto season. Newark Palace Theatre will be showing performances of Jack & The Beanstalk from 7th December until 31st December. Telephone the Box Office on 01636 655755 for tickets or more details. Or you may fancy Peter Pan at Mansfield Palace Theatre from 26th November until 31st December Tel: 01623 633133 to book your tickets.

If you have ever thought about visiting the historic Welbeck Abbey which only opens its doors once a year to the public, then now is the time to book! The tours are daily from 7th August 2017 until 3rd September 2017 at 10am, 12noon and 3pm and cost £18.00 per person. Tel: 01909 501700 or email: info@harleygallery.co.uk to book or for more information.

Whatever your interests, whether it is walking or cycling, crafts or historic houses we have information on events or attractions related to these.

Don't forget the new holiday brochures will be coming into our office from January!

Please note that although details of events are correct at the time of going to press, it is always advisable to telephone in advance to confirm details. The Tourist Information Centre at Rufford Country Park is open daily 10.30am-4.30pm. You can leave a message on our answer phone and we will reply to you the following morning. Tel: 01623824545. Alternatively you can email us at sherwoodtic@nsdc.info or visit our website www.newark-sherwooddc.gov.uk and follow us on twitter www.twitter.com/homeofrobinhood

Edwinstowe Hospice Support Group

Thanks to all who attended and helped at our Coffee Morning on Saturday 10th September where we raised £340 for the John Eastwood Hospice. The following weekend, the 17th, we were involved in helping with the annual garden fete run by Tracey Wilson and Jean Frettsome at their house in Robin Hood Avenue.

Despite the rather cold wind and overcast sky the numerous stalls and raffles raised over £2,000 and

we are very grateful that this money is donated to the Support Group. Thanks to Jean, Tracy, Jason and Brian and all helpers and supporters who work hard to make this event a success.

Our next events include a stall on the High Street on 24th November for the the Christmas Event followed by our Christmas Coffee Morning on Saturday 26th November.

We hope to see you!
Phil Robinson



Granny's Veg

☎ 01623 823880

☎ 07923 476539

✉ granny@grannysveg.co.uk

www.grannysveg.co.uk



Delivered to your door

Choose your delivery day - Convenient delivery times - FREE delivery

See website for more details & prices

- Reliable • Efficient • Dependable • Fresh
- Good Value • You Deal with the Boss (Granny)
 - Boxes start at £5.00
- Delivery times to suit you • FREE Delivery
- Locally sourced whenever possible

RELIABLE

GRANNY'S



If I wouldn't buy it for my family I wouldn't sell it to you



FRESH

FREE DELIVERY

FRIENDLY

www.grannysveg.co.uk

Delivering quality fruit, vegetables, herbs, veg boxes and fruit boxes to your door in the Edwinstowe, Ollerton, Clipstone, Wellow, Gorsethorpe, Forest Town, Mansfield Woodhouse, Mansfield and surrounding areas.

Where possible all produce is locally sourced to ensure it arrives at its freshest.



Fresh Fruit & Vegetables ... delivered to your door

Little Oaks is Growing

Following the sad closure of Edwinstowe Pre-school Playgroup, a group of mums and grandmas desperately wanted to have a playgroup in the village and so began Little Oaks Playgroup.

The Playgroup opened in May and has been a huge success. The community has come together with generous donations of toys and money, showing that we need a service such as this for our little ones.

On Tuesday and Friday mornings the Village Hall turns into a fun-filled, indoor and outdoor play-area, welcoming babies, toddlers, parents, grandparents and childminders.



Little Oaks Playgroup is open Tues and Friday 9.30-11am in the Village Hall. £3 for over 1s and £1 for under £1s.

The volunteer organisers provide a fun and friendly environment where children ages 0-3 are active and creative.

Each month has a different theme with everything from dinosaurs to pirates; crafts and sensory play are all linked to the theme. There is also a cosy corner with soft blankets and toys for new babies and pre-walkers.

Little Oaks Playgroup is a friendly place where parents, grandparents and childminders can have a drink and a chat while their little ones play happily. Children over 1 also have a healthy snack, afterwards the sessions end with music and movement time.

Little Oaks Playgroup is open Tuesday and Friday 9.30-11am in the Village Hall. £3 for over 1s and £1 for under £1s.

Shine a light for someone you love this Christmas

Christmas remembrance carol service

Thursday 22 December

Carols at the Castle

incorporating

Light up a Life

from 6.00pm

Christmas is a special time of the year, but for anyone who has lost a loved one it can be a time of mixed emotion. Beaumont House warmly invite you to join us. Our Light up a Life appeal will go towards funding our specialist end of life and palliative care. Please see our website for further details.

To dedicate a light to someone you love, contact us on 01636 610556 to make your donation. Alternatively download a form from our website www.beaumonthouse.co.uk

Everyone is invited & it is free to attend

In partnership with

NEWARK & SHERWOOD DISTRICT COUNCIL

NEWARK CHURCHES TOGETHER

THE TYRE SHOP

New, Remould and Part Worn Tyres Wheel Balancing

Unit 17 Beacon Court
New Ollerton
Nottinghamshire, NG22 9QL

Tel. James:
01623 836306

Mobile:
07866507083

www.tyreshop-online.co.uk

Local Services & Groups Directory



Local (01623) Number Applies Unless Otherwise Stated

Helpful Numbers

Parish Council Office - 824243
Newark & Sherwood District Council - 01636 650000
Nottinghamshire County Council - 0300 5008080
Notts Police - Non Emergency - 101
Citizens Advice Bureau - 0344 411 1444
Tourist Information - 824545
Major Oak Medical Practice - 822303
Edwinstowe Library - 822280
Sherwood Forest Trust - 821490
Sherwood Forest Visitors Centre - 823202
The Village Hall - 07594460846

Local Groups

1st Edwinstowe Beaver Scouts - 823761
2nd Edwinstowe Brownies - 824782
Edwinstowe Historical Society - 822264
Edwinstowe Hospice Support Group - 822070
Edwinstowe Leisure Painters - 01777 870588
Edwinstowe's Helping Hands - 07800803728
Major Oak Pop Choir - 07450316756
Dukeries Singers - 822070
Abbey Road Art & Craft Group - 825518
Royal British Legion - 824787
Dukeries Tai Chi Society - 822827
1st Edwinstowe Scouts Group - 823165
Lynds Close Luncheon Club - 07800803728
Sherwood Forest Probus Club - 822256

Schools

St Marys Church Of England Primary School - 822518
King Edwin Primary - 822111
Dukeries Accademy - 860545

If You Would Like
To Add Your
Group To Our
Directory List,

Please Contact
The Parish Council
Office On: 824243
Or Email:

info@edwinstowe.co.uk

Churches

St Mary's Church Office - 822430
St Mary's Church Rooms - 07840435796
Methodist Church - 623192

Nurseries

Bright Beginnings Day Nursery - 822440
--



HOUSEHOLD EMERGENCY PLAN

Complete this plan with all members of your household

Your household

Address:

.....

Landline phone no:

Occupants and mobile phone numbers:

.....

.....

.....

.....

.....

.....

Do you have smoke detectors fitted and checked regularly?

Are you in a flood risk area and signed up to the Flood Alert scheme?

Do you have sufficient insurance cover for your property and contents?

Staying in touch and staying together

If you can't get home or contact each other a pre-arranged contact and meeting point will be useful. It would be useful if you could stay overnight at these places if you couldn't get home.

The meeting point may need to be away from home where access may have been restricted. Is there a friend or relative's house you could use as a meeting place?

Name:

Address:

.....

Landline phone no:

Name:

Address:

.....

Landline phone no:

Helping each other

Do you have any neighbours who may need your help or may be able to help you?

Name:

Address:

.....

Landline phone no:

Name:

Address:

.....

Landline phone no:

Useful numbers & contacts

Contact	Numbers/Frequency
Emergency Services	999 – Emergencies only
Notts Police	101
Notts Fire Service	01623 666270 – General purpose number
Local GP Surgeries/ Family Doctor	01623 822303 – Edwinstowe 01623 703266 - Ollerton
Environment Agency – Floodline	0345 988 1188
Environment Agency – Incident Hotline	0800 807060
NHS Direct	111
Transco – Gas Emergencies	0800 111 999 – 24 hour emergency number
Severn Trent Water	0800 783 4444 – 24 hour emergency number
Utilities Companies	
Schools	King Edwin – 01623 822111 St Mary's – 01623 822518 Dukeries – 01623 860545 Manor – 01623 425100 Meden – 01623 843517
Association of British Insurers (ABI)	0207 600 3333
Insurance (House)	
Insurance (Car)	
Local Radio	BBC Nottm 103.8 / 95.5 fm
Local Radio	Mansfield 103.2 fm

Laxton History Group

Laxton History Group has a brand new presentation based on the research done by the Group over the last three years into the village between 1900 and 1920. We have looked at all aspects of life – the relationship with the Lords of the Manor at Thoresby Estate, the reorganisation of the open field system, the men recorded on the War memorial, the life of the school and the lives of the people.

We will be happy to take bookings to give his presentation at meetings of local organisations. Please telephone 01777 871506 for more information or to make a booking.



Laxton History Group
Christmas Fayre
Laxton Village Hall
Saturday 19th November
11.30am - 3.30pm
£1 admission inc. cup of tea

- ☆ Lots of crafts for those tricky Christmas presents
- ☆ Start your Christmas shopping at the stalls
- ☆ Home made soup & cobs
- ☆ Traditional cakes with your tea
- ☆ Cake stall for cakes of all sorts to take home

The redevelopment of Thoresby Colliery: An Update

Redevelopment plans for the former Thoresby Colliery were revealed at a public consultation event on Thursday 21st July 2016. Harworth Group plc took ownership of the site located off Ollerton Road, Edwinstowe following its closure in July 2015, and invited local residents, councillors and representatives from other interested organisations to the former colliery to view the plans and express their thoughts.

The proposed plans included a 350-acre country park, 25-acre business park, up to 800 new homes and also an area of land set aside for sports pitches and an education provision. Running from 2pm until 8pm, the public consultation event saw around 400 people attend, and showcased the proposed masterplan of the site, along with the

Syringe found on Fourth Avenue play area- Parish Council express concerns

Parish Councillors were shocked to hear that a syringe was found on the Fourth Avenue play area by one of the Parish Council staff when he was doing the daily inspection of the site. The incident happened in early October.

The syringe was immediately removed and disposed of in line with the approved practice. The Chair of the Parish Council, Councillor Celia Brooks alerted the police and contacted the schools, asking them to talk to children about what to do if they see a syringe anywhere and never to touch it. Councillor Brooks said, "I'm shocked that we seem to have a drug user in the village, who also seems to have a total disregard for the safety of children and members of the public.

I can't remember a time when we've found a syringe on one of our play areas. However, our staff do check the play areas every day and pick up the litter and empty the bins. I've asked them to be extra vigilant when checking the play parks and reminded them of the correct procedure, which was followed in this instance."

The schools have been asked to remind children of the dangers, not just in play parks and what to do if they find a syringe. Parents should also warn their children never to pick up or touch a syringe or indeed anything suspicious and always alert a parent or teacher so that the proper steps can be taken.

This advice is good for wherever the child happens to be as it's a sad fact of life, these things can happen anywhere.

opportunity for residents to have a Landrover tour up to the top of the present spoil heap for an impressive view of the site, the Major Oak and out towards Lincoln.

Harworth's plans originally suggested that some of Nottinghamshire County Council's land to the West of the site could be brought forward for development. Since the consultation event however, Nottinghamshire County Council have confirmed that they did not want their land to be included within the scheme. As a result, Harworth is currently in the process of amending the site's plans to account for the Council's decision and for feedback on the day from residents. It intends to submit a planning application to Newark & Sherwood District Council towards the end of 2016.

**PETER WARD
SOLICITOR**

**TURNER ATKINSON & WARD
SOLICITORS**

23, HIGH STREET EDWINSTOWE NOTTS NG21 9QP

TEL 823450

FAX 823456

TURNER ATKINSON & WARD OFFER
A FULL RANGE OF CONVEYANCING
SERVICES, PREPARATION OF WILLS,
AND ADVICE AS TO PROBATE

APPOINTMENTS ARE AVAILABLE AT
SHORT NOTICE AND HOME VISITS ARE
MADE UPON REQUEST

WE ARE AUTHORISED AND REGULATED BY THE
SOLICITORS REGULATION AUTHORITY
REGISTRATION NUMBER 101320

Solar Farm on Ollerton Road approved on appeal

Despite objections from the Parish Council, County Councillor John Peck and Nottinghamshire County Council and despite the Planning Committee of Newark and Sherwood District Council turning down the application to build a solar Farm in a field on Ollerton Road, an independent planning inspector has overturned the decision and allowed the solar farm to go ahead.

By the time you read this article, the panels will be in place. The objections were not against solar energy which is a valuable form of energy, but about the site being so close to Sherwood Forest, Sherwood Heath and the River Maun valley. It will be very visible from the proposed viewing point at the top of the restored Thoresby Colliery spoil heap when it is completed. John Peck said, "The objection was not about solar energy, but where the solar farm is located."

The Sherwood Forest area is our internationally renowned, premier tourist attraction in Nottinghamshire. Planners need to be much more careful about developing this sensitive area. The Secretary of State has recently given the go ahead for a giant incinerator in nearby Bilsthorpe and who knows, we may see applications for fracking. Local people need to be listened to and much more thought needs to be given to how we preserve the Sherwood Forest area."



News

From Mark Spencer MP

"I was delighted to recently visit to meet with Edwinstowe Parish Council, at the invitation of Cllr Michael Brown, to talk about what's happening in the village and get an update on a number of local issues. At the top of the agenda was a discussion around how a number of national policies affect the village - which obviously as the MP I can feed back to Government - so we can try to work together to save local taxpayers money and keep Council Tax down.

We also talked about the new Visitor Centre, and plans for the Thoresby Colliery site which are all ongoing. I have told developers in no uncertain terms that we want jobs as a priority, and any plans to build homes on the site will need to come with funding to deal with local infrastructure, including paying for the Robin Hood Line and improvements to Ollerton Roundabout, as well as ensuring that traffic does not all plough through the crossroads at the top of the High Street. Sustainable transport networks and local services are absolutely vital to get the most out of these sites both for residents and local tourism.

It's great to be able to sit down and have a positive discussion with the Parish Council and I'm keen to both thank and to support Cllr Michael Brown for helping to facilitate it. I hope we can continue to work positively together."

The Thoresby Miners' Memorial

We reported in the last magazine that the Parish Council agreed to a motion moved by Councillor John Peck and seconded by Councillor Celia Brooks, to establish a fund to create a permanent memorial in the village to the miners who lost their lives during the course of their work at Thoresby Colliery.

We're pleased to report that we have already had several generous donations and John Peck has promised a contribution from his Divisional Fund to support local communities. If any business or individual would like to contribute to the fund, please drop it in or send it to the Parish Council Office. Any donation, however large or small will be very gratefully received.

We are currently investigating an appropriate design and site for the Memorial and will be setting up a working group. Please contact the office if you would like to be part of this group.

Silver For Edwinstowe Echiums

What a fantastic summer for local couple Linda and Ray Heywood who grow amazing exotic Echium plants. As well as selling and giving advice through their website and to visitors to the Echium Garden at Edwinstowe House, this year bought an unexpected TV profile for the couple.

The BBC camera crews arrived in Edwinstowe in June to film for the coverage of RHS Hampton Court Palace Flower Show in July and to tell the story, so far, about the success of Echium World from its launch only three years ago.

Linda says "What a great experience to be invited to exhibit at RHS Hampton Court, the world's largest garden show and be awarded a Silver Medal, all the hard work is paying off! It was great to meet Monty Don and Carol Klein, we even managed to meet celebrity couple Ade Edmondson and Jennifer Saunders who bought some Echium plants for her mum!"

Back to the drawing board, the couple are hoping to be successful with their innovative design exhibit for the new RHS Chatsworth Flower Show in June next year. For more information or to make contact visit www.echiumworld.co.uk



COMMENTS

Please email your comments to :

info@edwinstowe.co.uk or drop this form in at the Village Hall.

.....

.....

.....

.....

.....

.....

.....

If you would like to submit an article or an advert for the next issue email us at: **info@edwinstowe.co.uk**



Nottinghamshire Foot Health

Foot health care in your home

Tel: 07540 798 161

Providing you with a professional & friendly home visiting service treating the following:

- Corns & Callus
- Fungal nail infections
- In-growing toe nails
- Care of the diabetic foot
- Athletes foot
- General foot maintenance
- Thickened toe nails
- Verrucas
- Specialised nail cutting



Edwinstowe Parish Council Is Proud To Present The High Street Christmas Event



Meet Santa
Ballon Modellers
Stilt Walkers
Punch & Judy

Fairground Ride
Candy Floss
Games
Craft Stalls

Live Music & Magician
Brass Band
Pony Rides
Fire Engine

HAWKES OF STEELE
BIRDS OF PREY AND
MEERKATS

Plus: Library open for children's activities,
live music and mince pies

HANG A BAUBLE ON
THE CHRISTMAS TREE

THURSDAY 24TH NOVEMBER 4:30 - 7PM

Festive Fun & Activities at
Church Farm Courtyard

Edwinstowe's Got Talent
In The Bargain Booze Courtyard

