



## Welcome to the Autumn edition of the Parish magazine 'Edwinstowe Village News'

We hope readers like the new look magazine. We are always open to comments and suggestions though and there is a comment form at the end of the magazine or you can email the Parish Council office.

As usual, you will find lots of news about what's happening in the village and articles by some of our many community groups. Do make a note of the Christmas lighting up event which seems to get better and better every year and is always a very well attended community event.

We're biased, but we think it's the best Christmas lights event in the area and we know many people come from other nearby villages. This year, it will be held on 29th November starting at 4.30pm. We hope you can make it.

### Edwinstowe Remembrance Service - Sunday 11th November 2018

In this special centenary year of remembrance, services all around the country will be making special mention of commemorative events that are taking place nationally and internationally. Reverend Ian Webb will deliver the church service and blessing and, once again Sir David Naish DL will represent Her Majesty the Queen and take the salute. We are grateful to the invaluable assistance of the Thoresby Band who will accompany the service throughout. The Royal British Legion welcomes residents and visitors alike and we very much look forward to witnessing another memorable remembrance service in Edwinstowe. Please make every effort to attend and join us on this important national occasion

[Read more...](#)





In the last issue I said I was pleased that the Manvers Estate roads had been surface dressed. My pleasure turned to disappointment when the complaints started coming in about the loose chippings, the tarmac not drying out and some of the poor workmanship where the edges had not been properly sealed. I immediately expressed my dissatisfaction to the Highways Department and arranged an on site meeting with the Area Highways Manager to show the problems at first hand. It simply isn't good enough and I'm pressing for the work to be put right.

There's more to be done in the village though (and hopefully to a better standard) and I've been making a strong case for urgent repairs to Church Street and some of the worst pavements in the village. Please let me know of any potholes, pavement damage or faulty street lights and I'll do my best to get them fixed.

I've been very concerned about the spate of crime and vandalism we've been experiencing on the High Street over the past year or so. I strongly support the traders' call for the District Council to install CCTV on the High Street. I wrote to the Police and Crime Commissioner asking for more police patrols in the area. He sent me a positive reply but I want to see a greater police presence. I also moved a motion at the Parish Council which was supported unanimously, calling on the District Council to install CCTV.

Lastly, I handed in the Parish Council petition signed by several hundred Edwinstowe residents opposed to fracking in the Edwinstowe and Sherwood Forest area, to the Chairman of the County Council at the July meeting of the full County Council. My impression is there is considerable opposition in the village to fracking proposals and I will continue to speak up against it at every opportunity.

## Library closed for refurbishment

Most residents will know that the library closed in September until the end of the year for a major refurbishment. Before finalising the plans, Peter Gaw, the Director of Inspire who run the Library and Arts Service on behalf of the County Council, came to discuss the project with the Parish Council. The Parish Council gave their full backing to the proposals. Chairman of the Parish Council, Celia Brooks said, "The Parish Council fully supports the refurbishment. The library is an important public building which is essential in helping to maintain a thriving High Street. I'm optimistic the alterations will lead to greater use of the facility." Edwinstowe's County Councillor, John Peck also gave his backing, "I'm pleased that instead of closing libraries, which is happening all over the country, the County Council with the backing of all councillors, has managed to keep Nottinghamshire's libraries open. This is a substantial investment in Edwinstowe's library and it's important that residents do use it. For anyone with young children, please join them up and encourage them to take books out!" The refurbishment includes replacement of the external cladding, internal alterations, including installing air conditioning and creating a meeting room for courses and community group activities.

# NEWS

## Possible extension to the village conservation area

Newark and Sherwood District Council are considering an extension to Edwinstowe's current conservation area which takes in Church Street, East and West Lanes and the High Street as far as the Co-op. The District Council held a public consultation over the summer, including an open event in the library to obtain residents' views. If it goes ahead, the conservation area is likely to be extended along the rest of the High Street to the railway bridge at the bottom of Rufford Road. Councillors Celia Brooks and John Peck had a walk around the area with Newark and Sherwood District Council's conservation officer, to draw his attention to some of the historic village buildings which they felt ought to be placed within the conservation area. At the moment, the bridge over the river, the Dukeries Hotel and the railway station are not within the conservation area for example. Councillor Brooks said, "The Parish Council strongly supports an extension to the conservation area. We need to safeguard the historic centre of Edwinstowe which gives the village its character. Important buildings such as the river bridge, the Dukeries and the railway station need to be safeguarded against inappropriate development. Before our present conservation area came in to being, planners allowed some historic buildings, especially on the High Street, to be demolished or altered in an inappropriate way. Since the present conservation area came in to being, we have been able to ensure the village centre is better protected." John agreed and said, "The Parish Council has done a great deal to improve the High Street in recent years. By extending the conservation area to include some of the other historic buildings we can make sure Edwinstowe retains its village character. We live in a very special village and we want to keep it that way."

Conservation area status means that anyone wishing to alter a property within the designated area must first obtain permission from the District Council planning department. A recent example would be the developer who converted the former Ye Olde Jug and Glass pub into flats had to retain the front of the building in its original form. In all probability, if there had been an application to demolish the main building or substantially alter the frontage, it would almost certainly have been refused, because of the building's importance to the appearance and character of the High Street. A bonus to owners of residential properties within a conservation area is property values are often increased. However, it doesn't necessarily mean they can't alter or extend their properties, but permission has to be obtained to ensure any alterations are in keeping.



# Thoresby Colliery Memorial Garden and the winding wheel

We reported in a previous issue that our target of £20,000 has been reached to create a memorial garden remembering miners who lost their lives working at Thoresby Colliery. John Peck, who chairs the working group is hopeful the garden will be completed within the next few months. Councillor Paul Peacock said, "Everything is now coming together. The plans for the garden which will be next to the Village Hall, are well under way and a design for the memorial stone has been commissioned. The garden will be landscaped and it will be a fitting tribute and a permanent memorial."

Progress has also been made on re-siting at least one of the half winding wheels which stand at the former colliery entrance on Ollerton Road. The Parish Council wanted them to be retained in their present position but Harworth Estates, the developer of the colliery site, were insistent they had other plans for the site but would be prepared to donate the half winding wheels to the Parish Council to relocate. Harworth Estates do say they will eventually site one of the wheels in a prominent site somewhere in their development. However, the Parish Council want to make sure one is sited somewhere in the village as a lasting memorial to our mining history, where everyone in Edwinstowe will be able to see it and also visitors to the village. Therefore, after a meeting between Councillors John Peck and Celia Brooks and RSPB officer, Ross Frazer, RSPB kindly agreed that a half

winding wheel and display board explaining the history of mining in Edwinstowe, could be sited on land near Forest Corner. Councillor Brooks said, "We are very grateful to RSPB for agreeing to allow us to site a half winding wheel on



Forest Corner. It is important that Edwinstowe's proud ninety year mining history is remembered. We needed to find a suitable site as it has been made clear the winding wheels won't stay in the present location. The Forest Corner site is good because the winding wheel will be seen by residents and the many thousands of visitors. Importantly, the colliery site is also visible from the proposed location."

## Obituary

### Elizabeth (Liz) Benson

It is with great sadness that we report the death of a much loved serving councillor – Liz Benson. Liz was born in Carmarthen, South Wales where she met and married her husband, the late John Benson.

John and Liz moved to Edwinstowe in 1973 as John was due to start work at Thoresby Colliery. They lived in the village from that date. Liz moved to Woodhead Close after John died.

She worked at Thoresby Colliery and after caring for her mother, worked at the petrol station on Mansfield Road (now Parkway) and then as a Carer at Nightingale Nursing Home. John had served on the Parish Council for many years and after his death, Liz was herself elected to the council in 2010. She sat on Health & Safety, Newsletter Editorial, Parks and Open Spaces, Personnel and Events Sub-Committees. She was an active member of the Patient Participation Group at Major Oak Medical Practice. Liz worked hard at all times to look after the interests of the people of Edwinstowe. Liz leaves her two children, Tina and Paul, four grandchildren, Logan, Lily, Jasmine and Daniel and dog Alfie.

She will be greatly missed by all who knew her and remembered for her sense of humour and common sense approach to life.



## From your Local MP Mark Spencer

It's time to get serious about the A614. That's what I've been saying to the Government and Nottinghamshire County Council this month.

During 2018 the amount of traffic has increased so significantly along this road that we are reaching a new chapter in the need for improvements. Every day at the Mickledale Lane junction, the Eakring Road Junction and the Ollerton Roundabout there is near chaos. What with new, high-impact housing developments planned in Bilsthorpe, Ollerton, Edwinstowe and Blidworth, the traffic will only get worse. We need real improvements both in terms of safety and carriage, such as crawler lanes and improvements to traffic flow at junctions.

I've spoken to constituents about both the A614 and the A617, and both roads need improvement. I've made clear my view that both of these roads should ultimately be dualled in order to relieve the problems faced daily by road users. Of course, dualling is a long-term goal, but the situation is so bad now, especially at junctions on the A614, that I firmly believe a much more urgent remedy is required.

## Fourth Avenue Welfare development plans revised

A housing association has bought the land on the former Welfare site on Fourth Avenue, which includes the car park and previous play area. They initially submitted plans for houses to Newark and District Council who are the planning authority. The Parish Council were concerned there were no bungalows and plans were redrawn to include two bungalows. Councillor Dennis Tattershall who sits on the Parish Council planning committee (the Parish Council doesn't make planning decisions but can submit comments about planning applications) said, "We wanted to see more bungalows because Parish Councillors believe there is a growing demand for bungalows in the village because of an ageing population. I'm pleased they've listened to us and have now revised the application to include two bungalows. We would have liked more but it's two more than we were originally going to get. We will continue to press developers and the planners to include bungalows in their schemes."

# NEWS

## Robin Hood Line update

Earlier this year, the Government held a public consultation about the forthcoming renewal of the East Midlands Rail franchise. Of interest to Edwinstowe residents was a question asking whether people agreed that the extension of the Robin Hood Line to Warsop, Edwinstowe and Ollerton should be included in the franchise. Edwinstowe's County Councillor John Peck, who has been campaigning for several years to get the line opened for passenger service, got the support of the County Council to respond positively to the consultation. The Government have now published their response to the consultation. Regarding the question concerning the Robin Hood Line, 90 per cent of the people who responded were in favour of the proposal. The Government have decided to include a requirement that whichever company wins the East Midlands rail franchise, they will be expected at some point to present a business case to the Government for the possible extension to the Robin Hood Line. John Peck said, "I'm pleased the proposal to extend the Robin Hood Line is still on the table but I'm disappointed the Government has not gone the whole way and definitely required the new rail operator to commit to extending the Line as part of the contract to run East Midlands train services. This seems like a watering down of the proposal because all they've done is ask the rail operator at some unspecified time in the future, to draw up a possible business case to present to the Government to consider. I'll admit we're further forward in the campaign than before, but we're by no means there yet. We need to be pushing the case at every opportunity."

## Anti fracking petition handed to the Chairman of the County Council

A petition opposing proposals to carry out gas extraction using the controversial method known as "fracking" in the Edwinstowe and wider Sherwood Forest area was formally presented to the Chairman of the County Council at the July meeting of the full council, by Edwinstowe's County Councillor, John Peck. Addressing the meeting, John said the petition had been signed by hundreds of Edwinstowe residents and he believed the majority of residents were opposed to fracking in this important and historic area- the County's number one visitor attraction. "Sherwood Forest is Nottinghamshire's jewel in the crown. The forest is associated throughout the world with the Robin Hood legend. It would be madness to turn the area into a huge gas field with drilling rigs everywhere and clogging the local roads with many more HGVs."

The Parish Council is opposed to fracking in the area as the prominent sign outside the Village Hall makes clear. The petition was part of the Council's ongoing campaign against any decision to frack in the area. Two Parish Councillors, Alison Troop and Karen Peck regularly attend the Edwinstowe anti-fracking group on behalf of the Council.

## Village Hall makeover

Edwinstowe's Village Hall (the original village school) is at the heart of Edwinstowe's community life, especially since the closure of the Miner's Welfare. It is well used by many community groups and also houses the Parish Council office. It was in need of redecoration and over the past few months has been redecorated inside and outside, a new front door installed and new carpet and curtains. This has been possible through the fund raising of the Village Hall Management Committee, a group of dedicated volunteers chaired by long-standing committee member, Pat Bamford. Grants were also successfully applied for with the assistance of Councillor Paul Peacock. There has been no expense for council tax payers as Parish Council funds were not called upon. The final stage will be to refurbish the toilets and this again will be paid for by a community contribution grant from current housing developments in the village. Pat and the other committee members are delighted with the results which ensure the Village Hall looks its best for several more years and can't wait to get the toilets refurbished. It is hoped will happen within the next twelve months when the Parish Council receives the grants from housing developments.

## Request for filter on Rufford Road traffic lights.

Edwinstowe's County Councillor, John Peck has received a number of requests for a right filter to be installed at the traffic lights at the top of Rufford Road. John says, "I agree that a filter would be helpful particularly with the increasing volume of traffic. I have made a request for a filter to the Highways department. That doesn't necessarily mean I'll get it, but I think if you're persistent enough you often get there in the end. I eventually got the filter installed at the cross roads turning into the High Street from Mansfield Road- it took several requests and nearly three years of trying. Anyway the request has been made for the Rufford Road lights and we'll see what happens." John has also been concerned about speeding on Rufford Road and regularly asks the police to attend with the mobile camera. He has also been successful in obtaining a weight restriction from 18 tonnes down to 7.5 tonnes along the High Street and Rufford Road, including all the adjacent roads.



## Parish Council reaches agreement to extend the cemetery

The Parish Council Cemetery committee met with the Estate Manager of local landowner, Thoresby Estates to discuss leasing additional land to enable the parish cemetery to be extended. The cemetery will be full within the next ten years and identifying new land is essential, particularly with the projected growth of the village. Cemetery Committee Chair, Councillor Chrissie Ayre said, "We are delighted that Thoresby Estates have agreed to lease us land adjacent to the parish cemetery which means we will be able to expand the cemetery in the future. It is important to families that their loved ones can be buried or memorials erected in their local cemetery rather than elsewhere, which would have been the case if we could not have obtained more land. We are extremely grateful to Thoresby Estates. We are very proud of how we look after our beautiful and peaceful cemetery and we will ensure this continues."



## Spate of crime on the High Street shocks residents

Police statistics generally show Edwinstowe to be a low crime area and a safe place to live, but the past eighteen months has seen a spate of businesses being broken into, several shop windows broken and perhaps most shocking, the raid on the Co-op which resulted in the cash machine being taken. This has led to traders raising a petition signed by many residents calling for CCTV to be installed on the High Street. Local Councillors have backed the call and at the July meeting of the Parish Council,



## Housing Development at Edwinstowe House

By the time you read this article, local builders, Woodheads, should have commenced the housing development in the grounds of Edwinstowe House which is their company headquarters. The development is a mixture of private and housing association homes which will occupy the car park area adjacent to the High Street and the corner of West Lane. Residents will have seen the old buildings being demolished and the land cleared during the summer months. Parish Council Chair Celia Brooks welcomed the development saying, "This is an area which has looked very tired for some time with a number of buildings were in a very poor state. We hope the new development improves the corner. We also understand the pavement will be improved and a crossing put in."

The other big bonus for the village is the Parish Council will take over the land next to the river with a plan to create an attractive public open space with a riverside walk and picnic area. Councillor Paul Peacock also welcomed the proposal. He said, "The Parish Council maintains a nature area on one side of the bridge over the river but the other side is a much larger area that has not been open to the public. We therefore want to open up the riverside on both sides to the public and create a large attractive village nature conservation area in the heart of the village to attract birds and other wildlife."

John Peck moved a motion, seconded by Parish Council Chair and District Councillor, Celia Brooks which read: "In view of the series of break ins and vandalism to businesses on Edwinstowe High Street, this Parish Council supports the traders in their call for monitored CCTV to be installed on the High Street." The motion was passed unanimously and councillors agreed to write to Newark and District Council who run the CCTV system asking them to consider extending it to Edwinstowe High Street. Councillor Michael Brown handed in the petition from the traders and signed by many residents, to Councillor Brooks who agreed to formally present it to the District Council at the next full Council Meeting.

Councillor Peck also reported he had written to the Police and Crime Commissioner requesting increased police patrols on the High Street and he read out the positive reply from the PCC.

# Lynds Close Luncheon Club Cream Tea Day

On Saturday 21st July 2018 we had our annual Cream Tea Day at Lynd's Close Community Lounge to raise funds towards our pantomime in December. It was a beautiful day and we were well supported by the local community. The local businesses gave generously and provided a range of raffle prizes. The John Eastwood Hospice brought their plant stall, Louise sold her glitter ware, Adele sold jewellery and Sharon had a bric-a-brac stall and donated the money to Lynd's Close. We raised £500 throughout the day from Cream Tea sales, Raffles and the Bric-a-brac stall. It would not have been possible without the hard work of our volunteer group and thanks go to Sue, Helen, Sue, Catherine and Alex, Ann and Sandra, Dawn, Pat, Mick, Sharon and Dave.

Elaine Murphy baked and iced a beautiful chocolate cake and we raised £60 from the cake raffle. A special thank you goes to the following businesses for donating prizes for our raffle:

*Craig of Fellaz barbers*

*Gary Lock butcher*

*Adam Edwinstowe Co-op Manager*

*Alexandra's hairdresser*

*Scott from Fruits of the Earth*

*Made With Love*

*Robin Hood Plaice*

*Martin Troop*

*Wayne Morley*

*Rachel Childs*

*Karrisma Hair and Beauty*

*Elaine Murphy*

*John Peck*

*Sharon Pickering*

*Rachel Winn*

# Lynds Close Luncheon Club Annual Trip to Skegness

On Thursday 14th June 2018 36 Diners and guests enjoyed a day out at the seaside. The destination was decided upon by asking the Diners having a choice of Skegness, Mablethorpe or The Yorkshire Wildlife Park. Skegness won the vote. The Diners enjoyed a free trip as did the guests and their carers from the local nursing home. Other guests made a £10 donation for their return ticket to help with the cost of the coach. The coach was hired from Coopers of Sheffield and was fitted with a hoist which made it very easy for wheel chair users and those having difficulty with steps to board. John the driver was amazing and looked after us all very well.

The coach departed at 9am prompt and returned for just after 6pm. It was a very enjoyable day, the sun was shining throughout the day and the fresh breeze was warm. On our return journey we were very lucky to see the Red Arrows practising their manoeuvres in the skies over Lincolnshire. They are so amazing.

Everyone said that they had enjoyed their free time in Skegness, visiting coffee shops, fish and chip shops, the pier and seafront, the gardens with some of the Diners doing some serious clothes shopping.



Forestry Commission Release – What's on at Sherwood Pines this autumn and winter?

At Sherwood Pines this autumn and winter, adults and children alike will find a variety of activities on offer to enjoy. In November we are celebrating the skies with two Star Parties. Taking place 9th and 17th, adults and children over the age of 6 can join us for a fantastic evening exploring the night sky with telescopes and star maps. Charges apply.

Children can take part in the Gruffalo Orienteering trail. Using a simple map to try and find twelve Gruffalo markers, once they've found each marker they need to answer the question in their Gruffalo orienteering booklet. The Gruffalo orienteering booklet along with certificate and map is available to buy from the Sherwood Pines Café for £1.50.

From 24th November, our 100% Santa Approved, UK grown Christmas trees will be available from our sales centre in the heart of the forest. With a whole Christmas experience on offer and a range of activities for all the family to enjoy, there is so much more than just Christmas trees to get the family into the festive spirit.

At Sherwood Pines there is something for everyone all year round, from walking, family cycling, mountain biking and Go Ape to adventure play. For sociable, safe and fun outdoor activity, we have weekly sessions of Nordic Walking and Park Run.

Further information on activities and events can be found on our website (<https://www.forestry.gov.uk/sherwoodpines>).

  
**Newark and Sherwood  
Clinical Commissioning Group**

Patients who are registered with a GP Surgery in Sherwood District can now book into evening and weekend GP and Nurse appointments.

The appointment may not take place at your usual GP surgery, but at another nearby. Your GP surgery will be able to provide you with more information about the location at the time of booking an appointment.

Appointments are available up to 8pm on a weekday, Saturdays mornings and Sundays from 9am – 1pm.

Sunday appointments are currently available at Forest Medical Practice, Rosemary Street Health Centre, Mansfield, NG19 6AB.

This is located just off Chesterfield Road very close to the Civic Centre with free car parking available. There is a pharmacy next to the surgery, which is open until 10pm 7 days per week. The surgery is accredited as Dementia friendly, has disability access and is within easy reach of the town centre.

Please note that these appointments are for non-emergencies and are pre-bookable only.

If you find that you no longer need your appointment please cancel it so that these can be offered to other patients.

For further information please speak to your GP Surgery.

## Visit **STONE TREASURES**

For fossils, crystals and gemstone jewellery



Craft Centre Forest Corner Edwinstowe NG21 9RN

Tues-Sun 10am-5pm 1<sup>st</sup> April to 30th Sept  
Wed-Sun 10am-4pm 1<sup>st</sup> Oct to 31<sup>st</sup> March

Tuesdays – (unless stated) 12 March 2019  
 13 November 2018 2 April 2019  
 11 December 2018 (if required) 15 May 2019 (including AGM)  
 8 January 2019 (Wednesday)  
 12 February 2019  
 (Start at 7.30pm)



# THE TYRE SHOP

**New, Remould and  
Part Worn Tyres  
Wheel Balancing**

Unit 17 Beacon Court  
New Ollerton  
Nottinghamshire, NG22 9QL

**Tel. James:**  
**01623 836306**

**Mobile:**  
**07866507083**



[www.tyreshop-online.co.uk](http://www.tyreshop-online.co.uk)



## WHAT GOES ON HERE AT THE ABBEY ROAD COMMUNITY CENTRE

<b>Monday</b> Emily's Friendship Group	<b>Starting at 9.30am</b>
<b>Monday Evening</b> Evergreen Club - Social/Bingo	<b>Starting at 6.00pm</b>
<b>Tuesday Afternoon</b> Emily's Exercise Class	<b>Starting at 1.00pm</b>
<b>Wednesday Evening</b> Evergreen Club - Dominoes/Bingo	<b>Starting at 6.00pm</b>
<b>Thursday Evening</b> Whist Group	<b>Starting at 6.00pm</b>
<b>Friday Afternoon</b> Abbey Road - Art/Craft Group	<b>Starting at 1.00pm</b>
<b>Friday Evening</b> Evergreen Club - Social/Bingo	<b>Starting at 6.30pm</b>

# Edwinstowe Scarecrow Festival 2018

In August The Royal Oak Allotment Association organised the first Scarecrow Festival in the village and were delighted with the response we received.

There were 26 amazing entries dotted all around Edwinstowe. Four leading members of the community judged the scarecrows and they had a difficult decision to make; but after much discussion and deliberation the winners were announced.

The first prize went to The Maharajah and his Elephant from Mill Lane, the second prize was awarded to The Sherwood Forest Fun Park and the third winner was The Village Exchange. All the winners made not one, but two scarecrows!

The People's Award went to Lee Johnson whose entry brought a smile to everyone's face!

We would like to thank all those who put so much time and effort into making such wonderful scarecrows and a special thank you must go to the judges who gave so willingly of their time.

We hope to hold another competition next year with even more entries.

Eileen Cormack  
(Secretary Royal Oak Allotment Association)



# Edwinstowe Methodist Church



Edwinstowe Methodist Church on West Lane, Edwinstowe, is a small and friendly group who meet every Sunday at 10.15am for worship followed by refreshments. We have a mid-week communion service every quarter (dates vary) and on the first Monday of the month the Wives Group meet at 7.30pm.

Our building is available for use by the community and currently Alcoholics Anonymous meets here every Wednesday at 7.30pm.

We are a church that seeks to work with and serve our community. Recently one of our ministers, Deacon Dave Keegan, ran a puppet after-school club at King Edwin School.

If you wish further information please contact Rev Debbie Keegan or Deacon Dave Keegan 01623 825469.

Photo: Deacon Dave Keegan with puppet Kevin.

## Edwinstowe Merry Women WI

theWI  
INSPIRING WOMEN

We don't have a meeting in August, but 11 of our members enjoyed a summer outing to Roper's Honey Farm. We learnt about beekeeping and making honey, and had the opportunity to make our own beeswax candles. Our next outing is a visit to Mansfield and Sutton Astronomical Society at Sherwood Observatory early in 2019. September saw us dancing the night away 'Bollywood Style' with Glenys. We had great fun and there may have been the odd creaky knee the next day! We started our Christmas activities in October making some lovely things for our Christmas stall at Edwinstowe Christmas Lights. Coming Up -

20th November - Monthly meeting - We will be making lovely Christmas rag wreaths. Non members welcome but a charge of £3 will be made for materials.

29th November - Edwinstowe Christmas Lights. We will be serving refreshments in the Village Hall. Come along to recharge your batteries with a cuppa and a mince pie.

11th December - (a week earlier than usual) - Monthly Meeting - Christmas Party! We'll be making a Christmas Cocktail and enjoying food and fun.

Membership of Edwinstowe Merry Women WI is open to all ladies from Edwinstowe and the surrounding areas. Meetings are held on the 3rd Tuesday. Not sure if it's for you or can't make meetings regularly - we welcome guest visits which are charged at £5 each. Do come along and see what we have to offer!

Phone: 07780 474142

Email: [edwinstowemerrywomenwi@gmail.com](mailto:edwinstowemerrywomenwi@gmail.com) with any questions.

Facebook: Edwinstowe Merry Women WI



# New chapter for Sherwood Forest

After almost a year of building work, Sherwood Forest Visitor Centre was thrilled to welcome its first visitors through the doors this summer!

Our team of staff and volunteers, many of whom have moved across from the old site, have been thrilled to see so many of you visit already and want to say a huge thank you to the residents of Edwinstowe for your support and interest so far.

After a busy week hosting the Robin Hood Festival and then getting used to our new operation, we are all now looking forward to the future and some exciting developments.

On October 4th, our funders, partners and local businesses were invited to explore the new centre as a thank you for their support and input over the duration of the project. We also organised a special event for local residents and families of Edwinstowe later this year as a celebration of our new centre opening. Keep an eye on the village website for details.

Our team at Sherwood is really proud of the new centre, and to be working in this wonderful forest. We're excited for the future too – in the coming months we'll be working hard to develop new and exciting experiences for our visitors. The legends of Robin Hood and the forest will be celebrated in a host of new ways, including regular events, costumed guides, informative interpretation and children's trails.

Thank you again for your support and patience whilst we've settled in, and for your feedback so far. We look forward to seeing you at Sherwood Forest again soon!



## St. Mary's Church replaced and refurbished 'Lead Hopper – guttering'

'This 'hopper' is the original lead hopper situated on the outside wall of the Rigley Memorial, which has now been replaced following vandalism

The memorial is built in stone in a niche located in the north aisle (where the north door would have been) in memory of the Ward and Rigley families of 1798 – 1857.

From the information on the memorial, we can say that the hopper was installed between 1798 and 1831, making it possibly 200 years old. The design was characteristic of this date.

There is no welding and the joints are entirely hand-made. (Later hoppers would have been made of cast-iron as this was cheaper to produce and performed better than lead.)

The Hopper is still on display in the church.



# Thoresby Colliery Regeneration Update

Harworth Group plc, the company behind the regeneration of the former Thoresby colliery, have now completed demolition works on-site, with phase 1 of the development – land for 150 homes – being made available to housebuilders for tender in early November. Recent negotiations with the District and County Councils have progressed well and it is expected that the planning permission will be finalised shortly.

The new development has been named “Thoresby Vale, Edwinstowe” to retain the links to both the local site’s history and Edwinstowe village. A total of 800 new homes will be built on-site, phased over a 10-year period, alongside a mix of both commercial and leisure/retail space to form the ‘heart of the community’. Residents will also enjoy a 250-acre Country Park in their back garden, with restoration work of the park currently in its advanced stages.

Given Harworth Group plc’s proud track record of creating places where people want to be, a site wide design code has also been prepared for Thoresby Vale, Edwinstowe to ensure consistent design and build quality throughout the development.

In September, 60 members of the Natural England team visited the development as they saw the ongoing restoration as a perfect example to see three core elements of their business – land use planning, protected sites and landscape conservation – in a live environment. This reflects both the interest in the local heritage/history and the quality of the restoration.

A new website with more details about the development can be found at [www.thoresbyvale.co.uk](http://www.thoresbyvale.co.uk) where you can find a masterplan, CGI photos, a virtual 360-tour and a 2-minute lifestyle video.

## Ollerton Roundabout

it’s good news at last!

It has recently been announced that Nottinghamshire County Council has obtained an £18 million grant towards improving six junctions on the A614 between Ollerton and Lowdham. Importantly for the residents of Edwinstowe and Ollerton, this will include the long overdue upgrading to Ollerton Roundabout.

Edwinstowe’s County Councillor John Peck, who has been campaigning to get Ollerton roundabout improved for several years, reacted with delight at the news. He said, “I’m delighted that at long last, this bottleneck is finally going to get sorted out. I’ve lost count of how many times I’ve raised the matter at Council meetings over the years and there have been several false dawns. The Parish Council and District Councillors, Paul Peacock and Celia Brooks have also played their part in campaigning for improvement, as has local M.P. Mark Spencer. This is something we’ve all been pushing for. I will now be working to make sure that whatever design is proposed for the new roundabout is the right one. There is only one chance to get it right. I often get asked whether there is sufficient room since the building of the Alders, but at the planning stage, I did request that sufficient room was set aside for a future new roundabout. I have been assured by the Highways department that that is the case.”

District Councillors Paul Peacock and Celia Brooks both welcomed the news. They said, “This is fantastic news. Ollerton roundabout has needed sorting out for years and with all the new development planned for Edwinstowe and Ollerton, this project is essential.”



Harworth

# Little Oaks Playgroup

Did you know that there is a volunteer-led children's Playgroup happening in Edwinstowe Village Hall twice a week? They meet every Tuesday and Friday morning (term-time only), between 9.30-11, and offer stay and play sessions for children aged 0-5 years. At Little Oaks, they welcome all types of families to their sessions - mums, dads, grandparents and childminders. New faces are always welcome!

Babies under one year £1.00 | Children over one year £3.00 | Additional children £1.00  
Find them on Facebook or call 07703 593688 for more information.

## Edwinstowe Leisure Painters

Our sessions started on September 10th at Edwinstowe Village Hall on Mondays at 2.00pm - 4.00pm. We have an enthusiastic group of painters and always welcome new members. Trips are currently being planned and next years exhibition. All enquiries to Graham Laughton on 01777870588.



# A.W. LYMN

## *The Family Funeral Service*

Introducing the new Ollerton funeral director Colum O'Shea



Colum O'Shea - Funeral Director

- 24 hour service
- Pre-paid funeral plans
- Rolls-Royce fleet
- Finance terms available
- Chapel of rest
- Memorial mason & florist

### Ollerton

Manvers House, 5 Sherwood Drive, Ollerton NG22 9PP

01623 860 045

[www.lymn.co.uk](http://www.lymn.co.uk)

[f /awlymn](https://www.facebook.com/awlymn) [t /awlymn](https://twitter.com/awlymn) [i /a.w.lymn](https://www.instagram.com/a.w.lymn)

*"Our family serving your family since 1907"*

# King Edwin Primary School

Parents, staff and pupils at an Edwinstowe Primary School are celebrating an inspection result – which the headteacher has dedicated “to the community”. King Edwin Primary School, Fourth Avenue, has been rated good following the visit by inspectors from education watchdog Ofsted. Andy Callaghan-Wetton, Headteacher, said: “This is a fantastic result, not just for the school, but for the community in general. It is something everybody in the school is very proud of, because we have had a period of change and it appears everyone in the village has backed us to succeed ever since.”

“I arrived at the school in September last year and from the start the community got behind the school. We have had older people coming in, offering help, some of which attended this school many years ago. Engagement with people in the area has been key for the staff and new leadership team, which has helped galvanise the school. The result now puts the school in a strong position moving forward, and with improving figures for Key Stages One and Two, we can only look to the future.”

The school was praised for its community work, investment and quality of care for the pupils. It was commended for its ‘strong culture of safeguarding’ and for the ability of staff to ‘inspire all pupils’. The report said: ‘Over the last year, there has been significant investment, both financial and by the community, to improve the environment, which is now well resourced, motivational and effective. Energy and a zest for learning permeates the school. The early years environment has been transformed to create areas that allow children to access high-quality resources in a purposeful and engaging space. This has resulted in good improvements in all areas of teaching, with the proportions of pupils reaching a good level of development in line with national figures.’

Mr Callaghan-Wetton said: “The result acknowledges the staff, parents and particularly the children, and we could not be more pleased and proud.”

## Pupils that will glow in the dark this Autumn

Following on from our last “giving back to our community” sponsored event the “Foodbank Flurry” for Ollerton Foodbank at the end of March and in association with Child Safety Week 2018 - Adam and Tina Wade directors of AW Safety Management a Health & Safety Consultancy & Training company in Edwinstowe co-sponsored with Simply Uniform to be able to make a generous donation of 110 High-vis vests for the teachers and pupils to our local King Edwin primary school here in Edwinstowe for use on school trips, library visits, school events, etc, and especially useful in the Autumn when the days are dark and gloomy.

The Head Teacher commented he was extremely grateful considering the on-going constraints of their yearly budget would not have extended to cover what had been donated.

Adults pictured left to right:

Tina Wade – AW Safety Management Ltd – Director, Sonia Harrison – Simply Uniform – Director, Adam Wade – AW Safety Management – Managing Director and Andrew Callaghan-Wetton - King Edwin Primary School Headteacher and selection of the foundation to year 5 students kindly modelling the new High vis vests.

Adam Wade of AW Safety Management Ltd commented: “This was a great opportunity to be involved in helping provide the high-vis vests which will be a vital piece of equipment to ensure the children’s safety whilst out on trips and around the village. As business owners we are aware of our corporate responsibility and are passionate about giving back to our community”.



# Rotary Club of Sherwood Forest

The sport of winter Biathlon was the topic of our first Sherwood Forest Rotary meeting in September, with our guest and speaker Peter Barnes from Ollerton, explaining how he got involved in this somewhat extreme activity – which is cross country skiing and shooting. Rotarians and guests were amazed at the ski sizes and shapes, and how much “waxing” of the skis plays a vital part in speed and tactics. A brilliant evening. We are now looking forward to the rest of the year with speakers including Mining Dialects, the History of Resuscitation, and Dentaïd amongst others. We welcome visitors at any time, but especially to our Last meetings of the Month events – please e mail Club Sec Laura (laura.harmer@btinternet.com) or speak to any Rotarian. We meet at South Forest Leisure Centre, in Edwinstowe on a Wednesday evening, at 7.00. see us on Facebook too (Rotary Club of Sherwood Forest - <https://www.facebook.com/Rotary-Club-of-Sherwood-Forest-273940476077102> ).

Our 38th Last Night of the Proms event is to be held at the Dukeries Academy Hall (with the kind permission of the Dukeries Academy), and will include Choral and musical entertainment from local singers and musicians, concluding with the familiar Last Night audience participation musical pieces and lots of flag waving. This year it will be on Saturday 17th November, and start at 7.00pm. Look out for the posters, tickets on sale in local shops or contact a Rotarian. Come and support your community as well as having a great evening, put the date in your Diary now !

The Rotarians at Sherwood Forest are also looking forward to their Autumn & Winter Fundraising activities including assisting the Royal British Legion with their Poppy Day Collecting, our annual Christmas Collection at Tesco, and assisting with Tree Planting in the new Sarah's Wood on Thoresby Estate. We welcome anyone if you have an hour or so to spare to help us.

Please contact Sec Laura (laura.harmer@btinternet.com).

Or though our facebook page.



Rotary serves YOUR Community, much of the funds we raise go to local organisations and charities.

If you would like to join the Rotary Club of Sherwood Forest or one of the one of the other 100-plus Rotary clubs across the Newark & Ollerton areas visit [www.ribi.org](http://www.ribi.org)

## Foot Care In Your Own Home

Laura Leivers MAFHP MCFHP

Mobile Foot Health Practitioner



**01623 238700**

- ✦ Routine Foot Care
- ✦ Fungal Nail Infections
- ✦ Corns & Callus
- ✦ Diabetic Foot Care
- ✦ Thickened Toe Nails
- ✦ Specialist Advice
- ✦ Ingrowing Toe Nails
- ✦ Gift Vouchers

Fully qualified and insured professional

[www.nottsfoothealth.co.uk](http://www.nottsfoothealth.co.uk)

Read our reviews on  

**Yell.com**  
 ★★★★★

# Council provides grants to improve home heating



Newark & Sherwood District Council currently has grant funding available to help local residents on low incomes to repair or replace inadequate heating systems.

If you or someone you know is on a low income and suffering with a long term health condition made worse by living in a cold home, the council may be able to help thanks to the Warm Homes on Prescription scheme.

Last year Newark & Sherwood District Council supported more than 30 home owners (and two tenants renting from private landlords), to make their home warmer, potentially avoiding unnecessary hospital admissions due to cold-related illnesses.

A Newark resident who recently benefitted from the scheme said:

*"I suffer with mobility problems so spend a lot of time at home and feel the cold. My old back boiler broke down just before Christmas. I couldn't afford to repair or replace it and I was getting a bit depressed with the situation so phoned the Council – they were brilliant. I've now got a new gas boiler and my home is toasty and warm again!"*

If you would like to know more about the Warm Homes on Prescription scheme, contact Newark & Sherwood District Council on 01636 650000.

For further information contact Newark & Sherwood District Council on 01636 650000 and ask for Winter Homes on prescription. Alternatively email [winterwarmth@nsdc.info](mailto:winterwarmth@nsdc.info) with your details or fill in the online application form on Newark & Sherwood District Council website.



## D.W CONSTRUCTION Local Builder & Bricklayer

### PROFESSIONAL, AFFORDABLE, RELIABLE SERVICE

New Conservatories, Conservatory Renovations,  
Garage Conversions, Single Story Extensions, Porches,  
Boundary Walls, Re-roofs, Chimney & Roof Repairs,  
Lintels, Insurance Work & Much More...

Visit: [www.dwconstruction.co.uk](http://www.dwconstruction.co.uk)

Call Now for FREE Quote: 07952093143 or 01623 847267



**WOODHEAD**  
FUNERALS

empathetic • considerate • respectful

A Compassionate and Caring Service

**FPA**  
FUNERAL  
PLANNING  
AUTHORITY

Continuing to serve Edwinstowe and the surrounding area with our Funeral Services since 1946 and with roots in funeral undertaking dating back as far as the mid 1800's

Contact — Melanie Bainbridge

Office: 01623 871101 or

Mobile: 07817 120487

Please ask us about our pre-payment funeral plans managed by Perfect Choice part of Ecclesiastical Planning Services.

 **Perfect Choice**  
FUNERAL PLANS

## New dementia friendly walking football group starting

A walking football group is being started in partnership with Nottinghamshire Co-production Network, open to over 65s, those with dementia diagnosis and their carers. For those who enjoy football, want to stay fit and make new friends, please get in touch. It is being held in the Dukeries sports hall and the first session started on 27th September from 1pm to 2pm. Free tea and coffee is provided. For more information, contact Rosie Dent on 01158043193 (email [co.production@nottsc.gov.uk](mailto:co.production@nottsc.gov.uk)) or Dave Long on 01636655701 (email [dave.long@active4today.co.uk](mailto:dave.long@active4today.co.uk))

# KEY BUILDING SUPPLIES LTD

• For All Your Building & Landscaping Needs •

## GETTING YOU READY FOR WINTER...

**NOW IN STOCK ... HEATER GAS, BUTANE, HOUSE COAL, SMOKELESS FUEL, GAS, LOGS – DRY SPLIT LOGS, BULK BAGS & NETS, KINDLING, ROCK SALT, PARAFFIN, SNOW SHOVELS & FIRE ACCESSORIES. CRANE & TIPPER LORRIES AVAILABLE FOR DELIVERIES...**



**10% OFF  
COAL &  
SMOKLESS**  
(COLLECTION ONLY)



**ALSO: BLOCKS, BRICKS, CEMENT, AGGREGATES, PLASTERS AND BOARDS, LINTELS, ROOFING MATERIALS, UPVC FASCIA'S, ALL SHEET MATERIALS INCLUDING PLYWOOD, M.D.F ETC, STUDDING, SKIRTING, DOOR FRAMES, R.S.T, P.S.E, DECORATIVE GRAVELS, PAVING, RAILWAY SLEEPERS, PATH EDGINGS, DECKING, ROCKERY STONE...**

Brick cutting service,  
also brick slips & arches:  
[www.keybrickcutting.com](http://www.keybrickcutting.com)

**ROAD C, BOUGHTON INDUSTRIAL ESTATE, BOUGHTON,  
NEWARK, NOTTS, NG22 9LD. TEL: 01623 861735**  
**OPENING HOURS: MON-FRI: 7.30AM - 5PM & SAT: 7.30AM - 2PM**  
**KEYBUILDINGSUPPLIES@HOTMAIL.CO.UK • WWW.KEYBUILDINGSUPPLIESLTD.COM**

# Edwinstowe Remembrance Service Parade - Sunday 11th November 2018

This year the Edwinstowe Festival of Remembrance will take place in St Mary's Church and at the Edwinstowe Memorial garden on Sunday 11th November.

The Service details will be distributed to all associated groups and organisations during the week commencing 22nd October 2018.

The programme for the parade and for the Church are almost identical to last year, with the parade group gathering at the Manvers Arms not later than 9:10 am on the Sunday morning.

The Parade Commander will again be CSM Ewan Lees who will direct the parade group to St Mary's church and thereafter throughout the village.

We expect the event to conclude at approximately 11:25am. We shall use the same route as for last year as, regrettably, we shall not be reliant solely on Police presence. TMS Retford will conduct the road closures.



REMEMBRANCE DAY  
*Left We Forget*

## Parade Order

Assemble .....	0920 hrs
On Parade .....	0930 hrs
March Off .....	0935 hrs
Arrive St Mary's Church .....	0945 hrs
Service Starts.....	1000 hrs
Service Ends.....	1040 hrs
Fall In .....	1045 hrs
March Off .....	1047 hrs
Re-form at War Memorial.....	1055 hrs
Roll Of Honour & Blessing .....	1056 hrs
Two Minute Silence.....	1100 hrs
Wreath Laying.....	1105 hrs
March Off .....	1115 hrs
Halt and Dismiss .....	1125 hrs

Since the last edition of the newsletter, the dry weather over the summer has led to a busy period for Nottinghamshire Fire and Rescue Service (NFRS). There has been a marked rise in the number of grass fires that fire crews have been called to, not to mention the support provided nationally at the large-scale moorland fires that raged throughout July.



**NOTTINGHAMSHIRE**  
Fire & Rescue Service  
Creating Safer Communities

**EDWINSTOWE**

Personnel from NFRS were sent to aid the efforts in tackling the moorland fires, assisting both Lancashire and Greater Manchester on Winter Hill and Saddleworth Moor, in an incident that took several weeks to deal with. At the height of the incident there were 30 fire engines at the scene every day, along with specialist teams, vehicles and equipment. Crews fighting the fires worked long hours in extremely hot and difficult conditions. Undeterred, their efforts contained the fire, protected a vital TV transmitter at the top of the hill and threats to life and property were avoided.

Looking ahead, the NFRS Strategic Plan is available for public consultation. This plan articulates and prioritises the main areas of focus of NFRS for the next three years and will provide a commitment to our communities of what you can expect from your Fire and Rescue Service. This will be an opportunity for you to feedback on our commitments.

Read the strategic plan here:

[www.nottsfire.gov.uk/abo.../Documents/NFRS%20IRMP.pdf](http://www.nottsfire.gov.uk/abo.../Documents/NFRS%20IRMP.pdf)

Please complete the questionnaire and we'll use your feedback to shape our service: [www.opinionresearch.co.uk/nfrs](http://www.opinionresearch.co.uk/nfrs)

## Hospice Support Group

What a marvellous summer we have all enjoyed, and very good for fund raising too.

Sue Howells invited us to hold a plant stall on Saturday 21st July at the Lynds Close Day Centre Open Day. The day was sunny, attracting lots of people who liked to buy plants, and enabling us to raise £95 for our funds. Thank you, Sue, for the invitation.

However, despite the glorious weather generally it can sometimes turn nasty. It rained with strong winds on Sunday 29th July, the very day that Jean Frettsome and Tracey Wilson held their annual Garden Party in Robin Hood Avenue, to raise funds for the Hospice. However despite this setback and taking into account money they had raised prior to the event, the sum of £2351.90 was given to our group for the benefit of patients in the Hospice. Well done and thank you to all helpers and supporters and especially to Jean, Tracey, Bryan, Jason and Ellie for keeping us going through the wind and rain.

In more sheltered conditions we held an Autumn Fair in the Village Hall on Saturday 22nd September. This was well attended raising a very pleasing £508.12. Thanks to all our helpers and supporters.

Diary dates: Saturday 24th November. A Christmas Coffee Morning in the Village Hall.

Thursday 29th November. A Hamper Raffle at our stall at the Christmas Lights event.

# 1st Edwinstowe Scout Group

1st Edwinstowe Scout Group

Beavers, Cubs, Scouts and Explorers have a full fun packed programme this term. Beavers have had a evening walk to Sherwood Pines and went into the trenches and were eager to learn about how the trenches were used in the war. Cubs have been to Thoresby Market site and did camping skills and had a huge fire and a BBQ. Scouts and Explorers did a hike to Thoresby market site and camped for the weekend. Cubs, Scouts and Explorers are making a poppy montage out of clay and the Beavers are making poppies out of pop bottles and will make a display for Remembrance Sunday. We are planning our next group events for bonfire night and Christmas.



## Scouts

We will be providing the "Scout Post" Service again this year, please look out around the shops for our boxes and stamps in November. Please be aware we can only guarantee delivery to the areas shown on the leaflets.

Thank you to the Co-op and customers for picking us for their 'Good Cause' this year.

Beavers and Cubs meet in the Village Hall on a Monday night.

Scouts and Explorers meet in the Church Rooms on a Friday night. Please contact Sue on 823761

# 1st Edwinstowe Brownies

1st Edwinstowe Brownies have had such a busy year so far, starting with a sleep over at the Deep in Hull and a camping weekend at Mega Moot with thousands of Brownies, Cubs, Guides and Scouts. The Brownies have gained many badges such as "Spring challenge" and "Friends to animals" by arranging flowers, feeding the birds, making owl shaped pancakes and raising money for animal charities. Our newest members have also taken their Brownie Promise in the South Forest swimming pool followed by chips for supper.



We are looking forward to a fun filled few months ahead by completing our "Crime Prevention" and "Craft" Badges. Where we will meet the local police, learn about keeping safe online and make gifts to sell on our stall at the Village Christmas lights switch on.

We have a few spaces in our unit for girls aged 7 to 10 years available.

We meet in Edwinstowe on Thursdays 6pm-7.30pm. If you would like to join in with the fun, please register your interest on [www.girlguiding.org.uk/joinus](http://www.girlguiding.org.uk/joinus) or call Brown Owl Heather on 07716818327.



**FREE**  
**10 YEAR**  
**WARRANTY**  
**Available**

# Gas Care

Service | Installation | Repairs

Gas Care in Mansfield Woodhouse is a family run local firm that specialise in:

- Boiler Replacements & upgrades
- Power Flushing
- Same day boiler repairs
- Additional Radiators
- General plumbing
- Maintenance plans
- Landlord certificates

**24 HOUR**  
**CALL OUT**  
**365 DAYS A YEAR**

**OVER**  
**25**  
**YEARS**  
*Experience*



**Facebook at Gascaremansfield**

**e: [info@gascaremansfield.co.uk](mailto:info@gascaremansfield.co.uk)      Call TODAY for a FREE**

**w: [www.gascaremansfield.co.uk](http://www.gascaremansfield.co.uk)      QUOTE on **01623 635635****



# PRO-ACTIVE FITNESS CLASSES WITH JANICE

AT EDWINSTOWE VILLAGE HALL

KEEP FIT AEROBICS	9.30 -10.30 am
PILATES	10.45 -11.45 am

The Aerobics class is an up-beat session where we enjoy performing movements to music to keep us fit, mobile and challenged - physically and mentally. It also keeps those unwanted pounds at bay!

The Pilates exercises are done on a mat on the floor to develop excellent posture helping to strengthen and tone.

Pilates is particularly good for anyone suffering with back pain

For your free personal consultation or any questions please contact Janice on 07801 695782



NEW CLASSES EVERY MONDAY

Classes are £4.50 each or £8.00 for both



**EDWINSTOWE AERIAL & SATELLITE SPECIALISTS**

## Freeview / Freesat / Sky

SINGLE POINTS TO FULL SYSTEM.  
FM / DAB AERIALS  
RETUNES / SET UPS / TV'S WALL MOUNTED  
EXTRA TELEPHONE POINTS

**FULLY QUALIFIED ENGINEER WITH 30 YEARS EXPERIENCE**

10% DISCOUNT FOR OAP'S



**CALL FREE ON: 0800 3345650**

7 DAY SERVICE, SAME DAY IF REPORTED BEFORE 10:30AM  
NO VAT TO BE SCARED ABOUT



# S & E TIMBER



- .SUMMER HOUSES
- .DOG KENNELS
- .WENDY HOUSES
- .CHICKEN COOPS
- .RABBIT HUTCHES

**SINCE 1980**

**HEAVY DUTY BESPOKE SHEDS/KENNELS MADE TO MEASURE**

- . Heavy Duty Fence Panels
- . Oriental Garden Features
- . Garden Trellis

- Skirting/Architrave
- Handrails • Dado Rail
  - Door Casings • Shiplap

- Heavy Duty Fence Panels, Concrete Posts & Plinths



All Planed and Rough Sawn Timbers

Decking Kits  
10' x 10' - £170  
12' x 12' - £250

**SLEEPERS!**  
- New & Reclaimed

Natural Sandstone Paving -  
Patio Packs from £17.50sq/m

- Matchboard • Floorboards
- T & G Cladding • Loft Insulation • Beading

- Wide Range of Plywood • Chipboard
- Eliotis • Plaster Board • M.D.F.

UNIT 45, TRENT ROAD, BOUGHTON INDUSTRIAL ESTATE SOUTH  
Telephone: 01623 861364  
**OPEN:- 8am - 5pm Mon-Fri; 8am - 3pm Saturdays**

Stockists of  
**PICNIC TABLES & GARDEN BENCHES**

# Major Oak Pop Choir

In July, the Edwinstowe based Major Oak Pop Choir enjoyed performing a concert to a capacity audience in the Ballroom of Retford Town Hall, raising over £2,100 for the Aurora Well-Being Centre in Worksop, who provide vital support for families who are living with cancer.

In August, the RSPB invited the choir to sing at an event at the new Sherwood Forest Visitor Centre. This event was held prior to the centre being opened to the public, in order to acknowledge and thank everyone who would be offering their time to be part of the volunteer team at the centre. It was a special evening for the choir, not only because we share the name of the most famous tree in Sherwood Forest, but we had the privilege of being the very first musical ensemble to perform in the amphitheatre at the new visitor Centre. At the time of writing this article, the choir is looking forward to singing again at the official VIP opening of the RSPB Sherwood Forest Visitor Centre which will be held on Thursday 4th October.

Future performance dates for your diary are:

Thursday 29th November 2018: Edwinstowe Christmas Lights event

Saturday 8th December 2018: The Dukeries Academy (Joint xmas concert with the Dukeries Community Band)

You can find out more about us, including further details of future performances by finding us on Facebook @ majoroakpopchoir, visiting [www.majoroakmusic.co.uk](http://www.majoroakmusic.co.uk), or by contacting Pauline Daghish on 07450 316756.



## Major Oak Medical Practice Patient Participation Group

On two Saturday mornings in April and May volunteers from the Mansfield Community First Responders (CFRs) gave talks and demonstrations at the surgery on basic lifesaving to a large number of patients. Several patients volunteered to try cardiopulmonary resuscitation (CPR) using dummies. The CFRs spoke of the importance of defibrillators sited in communities as they can be vital when someone has suffered a cardiac arrest. Questions were asked and praise given to the CFRs and the PPG for organising the events. As the demos proved so successful more are planned in the Autumn, look out for publicity in the waiting room and text alerts if your mobile number is registered with the practice.

CFRs are in schemes founded and run by volunteers who give up their spare time to attend appropriate emergency calls in their community and to raise funds to run the scheme. They are dispatched by the EMAS Emergency Operations Centre. More information can be found at [www.emas.nhs.uk](http://www.emas.nhs.uk)>volunteers

Chrissie Ayre, Chair of the PPG informed patients where defibrillators are to be located in Edwinstowe:- Abbey Road outside the Community Centre, the fire station, Thoresby cricket club on Fourth Avenue, the big house on Church Street and one is proposed for somewhere on the High Street. These can be accessed after calling 999, once the ambulance service have confirmed they are dealing with a cardiac arrest they will provide a code to the caller enabling them to open the cabinet.

More information can be found at [www.resus.org.uk](http://www.resus.org.uk)>defibrillators or [www.bhf.org.uk](http://www.bhf.org.uk)>heart-health

In September your PPG was awarded a certificate and trophy by the Clinical Commissioning Group for its' work in partnership with the practice. This recognises amongst other criteria that while your PPG gives constructive criticism, offering solutions to the practice, we still show mutual respect and have the support of the practice in working towards the common goals of improving patient experience



## EGMANTON PLANT HIRE

For a full list of hire equipment please see:

[www.egmantonplanthire.co.uk](http://www.egmantonplanthire.co.uk)

### ANDREW BANKS

Phone/Fax: 01777 872316

Mobile: 07971 627588

VAT registered

Please see our website for current price list



## Sherwood Forest Probus Club

The aim of the Probus movement is to give the opportunity for persons to develop new Friendships following their retirement. Usually people on retirement still feel active and mentally alert and Probus can help in the transitional period, often from a stressful full time profession.

The word PROBUS is an abbreviation of the words Professional and Business but membership is not restricted to persons from these two groups. It embraces anyone who has had some measure of responsibility in any field and have interests in common with others and who have now have either totally or largely relinquished such responsibility.

Probus offers such persons the opportunity to meet socially with fellow members and to become more aware of the enthusiasms and interests of others from talks, often illustrated, by guest speakers.

The SHERWOOD FOREST PROBUS CLUB meets monthly on the first Thursday of each month at the South Forest Complex, Clipstone Road, Edwinstowe, the meetings commencing at 11.30 am, with a speaker and followed by lunch and usually a short business meeting. In addition, twice yearly club lunches are held and outings are arranged.

We are offering anyone an added interest in your retirement and the opportunity to join a congenial social gathering from all walks of life. Why not give us a try and come along as a guest – there is no obligation but if you have not been to see PROBUS, you are not really able to answer the question –

### IS IT FOR ME??

If you need any more details about the club please contact the President Mr. Bryan Frettsome on 01623 822827 or Secretary Colin Roker on 01623 822220

## Edwinstowe Village Hall

The Village Hall is continuing to prosper and be well used for many and varied activities. The Village Hall Management Committee, looks after the hall, not only the letting, but ensuring it is kept clean and in good order. The running costs are covered by the letting rents, but for other needs (i.e. new kettle, cooker, furniture, etc.) we rely heavily on grants and money raised by the Committee at coffee mornings. This year so far grants have kindly been received from numerous places and the hall has been painted inside, new cupboards installed new door and new curtains hung.

The Parish Council received grants for outside painting, new flooring and other building work. The Committee and Parish Council are very grateful to all who have given grants and donations.

The next meeting is the Annual Meeting on Tuesday the 27th November all are welcome, perhaps you may wish to attend personally or represent your Society, Club or the Village.

Please note. There is still some confusion regarding the parking. The car park is a Public one and as such can be used by all people (Residents, Visitors etc.) which of course means it can get very full and busy at times.

Thank you for your understanding.

## Peter Borrowdale

### P&A Masonry Services

3 Croft Farm Close,  
Everton, Doncaster,  
South Yorkshire, DN10 5DJ

### MEMORIAL SPECIALISTS

Tel 01777 949029 . Mobile 07890589147

E-mail: [peterborrowdale@yahoo.co.uk](mailto:peterborrowdale@yahoo.co.uk)

A family business for over 110 years

Memorials-Lettering-Renovations



Here we are in the definitive 'Season of Mists and Mellow Fruitfulness'. 'Yes it is the time to lift your spuds, clear out the greenhouse, empty your Summer pots and baskets, buy Winter Pansies and bulbs and unearth all your Christmas CD's Christmas Songs and Carols, ready for the Festive Season!!!! We have been rehearsing for this since the end of August and are now note and word perfect.

We practise every Wednesday evening from 7-30pm. until 9-00pm. in the Concert Hall at The Dukeries Academy, Ollerton. This is best accessed via the Leisure Centre Entrance and Car Park.

We have lots of Christmas engagements already confirmed; some of them are long standing events to which we look forward every year and some of them are new ventures to which we are also looking forward.

- Thursday 29th. November 2018 Edwinstowe High Street, at the turning on of the Christmas Lights. The run up/down to Christmas starts here!!!
- Sunday 2nd. December 2018 Singing at Tuxford Christmas Lights.
- Saturday 8th. December 2018 The Dukeries Singers Annual Christmas Concert at Ollerton Jubilee Hall at 7-00pm.
- Wednesday 12th. December 2018 Carol Singing at Boughton Crematorium 6-00pm. until 7-0pm.
- Friday 21st. December 2018 A Concert at The Mansfield Masonic Hall at 6-15pm.
- Saturday 22nd December 2018 Carol Singing at The Alders Restaurant, Ollerton.

I love the 'Musical' lead up to Christmas. We only have that music out for a short time but it is so joyful and optimistic it has the capacity to lift everyone's spirits. We are all so busy, busy, busy at this time of year but I hope that you all have the opportunity to join in with one of these occasions and have a therapeutic sing.  
Jan

## CHRISTMAS DOOR BOWS BY CREATIVE RIBBON & BOWS - £25

**Beautiful organza hand-made door bows are very popular to decorate your door for Christmas. We offer red, silver, gold or green crystal organza and can fit for free if you are local to Edwinstowe and Clipstone.**



## CREATIVE RIBBON & BOWS

Call Sharon on 07860 612029 or email [Sharon@creativeribbon.co.uk](mailto:Sharon@creativeribbon.co.uk)  
Facebook – [www.facebook.com/creativedoorbows](http://www.facebook.com/creativedoorbows)

# St Marys Church Rooms

## Christmas Social

Saturday 8th December 2018 7.00pm - 11.00pm Fun evening with friends

The Church Rooms' Management Committee are organising their annual fundraising event on Saturday 8th December 2018. All the funds raised go towards the maintenance and running of the hall. The Church Rooms are available for hire for parties, christenings, coffee mornings and use by community groups. If you would like to hire the rooms please contact [rooms@stmaryt.org](mailto:rooms@stmaryt.org) or call 07977 624747 for prices and availability.

Disco, Bingo, Games, Raffle and Light buffet (bring your own drink)

£5 Adults £2 Children

Tickets available at the Village Exchange

This is a ticket only event



## PETER WARD SOLICITOR

### TURNER ATKINSON & WARD SOLICITORS

23, HIGH STREET EDWINSTOWE NOTTS NG21 9QP

TURNER ATKINSON & WARD OFFER  
A FULL RANGE OF CONVEYANCING  
SERVICES, PREPARATION OF WILLS,  
AND ADVICE AS TO PROBATE

APPOINTMENTS ARE AVAILABLE AT  
SHORT NOTICE AND HOME VISITS ARE  
MADE UPON REQUEST

TEL 823450

FAX 823456

WE ARE AUTHORISED AND REGULATED BY THE  
SOLICITORS REGULATION AUTHORITY  
REGISTRATION NUMBER 101320

## Ok Blinds

Affordable Stylish & Quality Blinds Made To Measure

07555618555

Find us on  
Facebook

Edwinstowe, Notts

Verticals Venetians Wooden Pleated  
Romans Rollers

## D.A Williams

### Electrical Contractor

REWIRES, SHOWERS, INTRUDER ALARMS  
SECURITY LIGHTING  
& GENERAL ELECTRICAL WORK UNDERTAKEN

TEL: 01623 836517  
07719999781



## A-Level Results

We are delighted to inform you that the A level results 2018 are the best results in the history of The Dukeries Academy! Our students once again achieved beyond national expectations. We are celebrating the majority of our students achieving A\*-B grades and 73% achieving A\*-C grades.

Many subjects did exceptionally well, far exceeding national averages. Students built on their excellent GCSE results and students have secured places at a range of prestigious universities.

Dukeries Academy students will soon be contributing to the world in a range of fields, including: Medical Science, Mathematics and Politics.



## King Edwin's Year 6

Wonderful to see King Edwin's year 6 classes again at the Dukeries Academy. Forensic crime scene Science tasks and a brilliant James Bond drama workshop to try and inspire some creative writing ideas for their Spies topic. As always, such a pleasure to see the students and staff.



## New Year 7's

We are delighted with the start our new Year 7's have made. Their confidence improving to secondary school had been boosted by their engagement with our extensive transition programme and they have really 'hit the ground running'.

Our new Year 7 have taken advantage of getting hands-on with their learning, especially in Technology where they have been developing graphic design and project management skills, in Science with a range of exciting practical investigations and in Music by experimenting with a selection of instruments and composing challenges. Students have commented on how much they are enjoying the enhanced practical learning, with one student saying "I get to do something practical every day, I really like learning that way".

In addition to this, all the hard work they have been putting into their English, Maths, Spanish and Humanities lessons has been burning a lot of energy! In the interest of replenishing those energy sores, we have welcomed a new catering team to the Dukeries. Our students are delighting in sampling new and interesting flavours from across the globe and have really responded to making informed choices about their diet. Students are enjoying their increased independence and have described the food as "tasty and nutritious".

Our new Year 7 are a very exciting year group with endless potential. We have been bowled over with their presentation, manners and standards of uniform – truly shining examples of what it means to go the Dukeries Academy.



## Success stories The Dukeries Academy

*Jacob Berry* has secured a place at Oxford University to study Ancient and Modern History after achieving three A\* grades in English, History and Sociology.

*Josh Thrower* also achieved an outstanding set of results with three A\*'s in Geography, Maths, Physics and an A in Further Maths. Josh will now go on to study Pure Maths at Durham University. He is the first person in his family to go to university, and he has shown exceptional dedication to his studies. The academy has supported him through the Stella Smedley Charity Fund, in order to complete his Further Maths qualification.

*Jacey Peacock* followed a more vocational route and studied Medical science, Health and Social Care, IFS and English, achieving two Distinctions and two B grades. She has now secured a place at Nottingham University to study Adult Nursing. She will be joined by *Guljan Keys* who will be studying at Leicester University to become an Operating Theatre Practitioner. Quote from Principal.

The staff and I are exceptionally proud of the way in which our students are growing in confidence and aspiration. More students than ever before have applied for universities further afield and in a wide range of different academic fields. A significant number have secured places at prestigious Russell Group Universities, including Oxbridge. Our students have built on their excellent GCSE results, and they are achieving the highest possible grades with the support of their exceptional teachers.

The Dukeries Academy also has a number of students who are first generation university applicants, and we are particularly proud of their successes.

# Goff's *This Christmas*

Of Edwinstowe

## goff's festive roast

Succulent Turkey breast with our own special forcemeat filling of sage & onion, apricots and home made sausage meat dressed with streaky bacon and herbs.

"a winner every Christmas" from £20 (feed 4-6) or large size for 8-12

## free range local turkeys

Superb fresh birds from a local farmer, some bronze, some traditional white.

Not to be mistaken with mass farmed turkeys!!!

## fresh meats

21 day minimum matured beef Sirloin, topside, rib roast for superb flavour and taste or try our boneless stuffed pork roast with cranberry & orange forcemeat.

## game to eat

3 bird roast- boned Guinea fowl stuffed with Gressingham duck breast, pheasant and a seasonal stuffing wrapped in streaky bacon and herbs £24.50.

Locally shot Pheasant, Gressingham duck, Traditional Geese.

## cooked to perfection

Goff's Festive roast ham - English slow roasted ham joint topped with Cranberry & fresh orange glaze individually prepared to our time honoured family recipe, cut to your requirements.

Hand Made pork pies, Turkey & Cranberry pie and more!

## selection of artisan english cheeses.

"All you could wish for a fantastic Christmas meal from your village, pop in to discuss your requirements with our passionate team" or log on to our website or email for more info!

Goff's Butchers, 43 High Street Edwinstowe tel 01623 824598

email [goffsbutchers@gmail.com](mailto:goffsbutchers@gmail.com) website [www.goffsbutchers.co.uk](http://www.goffsbutchers.co.uk)

FACEBOOK - Goff's Butchers

# WANTED! YOUR Views, YOUR Ideas.

## *Help guide our plans & WIN Afternoon Tea for Two*

We're the **Sherwood Forest Trust** - a small local charity with big ambitions. We want to help preserve and promote all things Sherwood Forest – its wood and heath, its history, its nature, and the people, villages and places that make it special.

We're not a campaign or political group. Nor are we a branch of any larger national charity. We carry out practical projects just in Nottinghamshire - in and around our fabulous Forest. From tree planting with schools to funding fun family events like the Major Oak Woodland Festival, our mission is to conserve and celebrate Robin Hood's legendary home.

By Sherwood Forest we don't just mean the 450 acre country park, or even the Sherwood National Nature Reserve. We speak up for the **nature**, **heritage** and **communities** of the whole wide area that was formerly the Royal Hunting Forest of Sherwood - the land once roamed by Robin Hood, from Nottingham right up to Worksop in north Nottinghamshire, from Mansfield in the west to Laxton village in the east.

### Keep Us On Track!

We're drawing up our charity's plans for the next five years. But we want to "keep it real" - concentrating on projects that local people really want. Please answer the following questions and we'll enter you in our **FREE PRIZE DRAW** to win a scrumptious Afternoon Tea at THE VILLAGE KITCHEN, Church Farm, Edwinstowe.

1. What does the Sherwood Forest area need more of? Tick up to **three**:

- Village celebrations** e.g. St George's Day, May Day parade.
- Help to promote our great local **tourist attractions**.
- More local cultural events** - music, crafts, art / photography exhibitions etc.
- Heritage projects** - celebrating our local history (e.g. archaeology walks.)
- Projects that help kids connect with Nature** (e.g. bushcraft days.)
- Promoting Sherwood's local food and drink** (e.g. local food fair.)
- "Going Green"** - recycling, composting, growing & sharing food.
- Activities & clubs to help **combat loneliness**.
- Looking after ancient trees**.
- Robin Hood events**.
- Helping raise money for a **new community hub** / community facility for your village, or to renovate existing ones.
- Skills courses in land management** to help unemployed youth get jobs.

Something different? What's YOUR suggestion?

.....  
 .....

2. What 3 things could we do to make more people care about Sherwood Forest's nature and heritage?

.....  
.....  
.....

3. Are you aware of any local social, volunteer or hobby group that we could link up with for projects about Sherwood Forest?

.....

4. Would you consider volunteering to help us on local events and projects?

- Not sure
- No
- YES! Please contact me.

What kind of volunteer role would interest you?

- Helping out at events       Office work
- 'Hands on' practical work
- Other ways I could help (please specify)

.....  
.....  
.....

Your name.....

Your address.....

Email.....

Tel. (only for use if you win the draw).....

**Data Protection**

We promise to keep your data secure. It won't be made public or shared with other organisations. Please tick here if it's OK for us to keep your data on file for the purpose of this survey.   

Post, or scan and email this form back to Linda Hardy

[linda.hardy@sherwoodforesttrust.org.uk](mailto:linda.hardy@sherwoodforesttrust.org.uk)

The Sherwood Forest Trust, 5-6 Church Farm, Mansfield Road, Edwinstowe, NG21 9NJ. Alternatively drop it through the letter box at the Village Hall on Mansfield Road. One lucky winner gets a voucher for 2 x afternoon teas at The Village Kitchen.





LAUNAY'S  
RESTAURANT & BAR



# CHRISTMAS 2018

## CHRISTMAS PARTY NIGHTS

Our Christmas Fayre menu with party novelties, served against a backdrop of live entertainment from our fantastic vocalist and a great disco atmosphere

Thursdays, Fridays & Saturdays  
from 1st December

Thursdays £32, Fridays & Saturdays £34

*See website for more details*

## CHRISTMAS FAYRE

Kick off the season with our delicious daily festive menu

25th November to 24th December

Monday to Saturday

Lunch and evenings

3 courses £27.50

2 course lunch £20

*See website for more menu and details*

## CANDLELIT ACOUSTIC EVENINGS

A traditional candle-lit 4-course Christmas celebration, set against a backdrop of laid back entertainment with a festive twist from talented local artists.

Tuesday 4th December

Tuesday 11th December

Monday 17th December

*See website for more details*

For all of events and menus, visit [www.launaysrestaurant.co.uk](http://www.launaysrestaurant.co.uk)

Bookings/enquiries: **01623 822266** ~ [enquiries@launaysrestaurant.co.uk](mailto:enquiries@launaysrestaurant.co.uk)

Launay's Restaurant, Church Street, Edwinstowe, Nottinghamshire NG21 9QA

# St Mary's Church

Aren't we blessed with some amazing eating and drinking establishments in Edwinstowe? We are not short of cafes or pubs in this village! I couldn't possibly say which are my favourites, only that lack of spare time and spare funds are all that stop me frequenting these establishments more often. What's great about these places is that you come in to a warm welcome, comfortable surroundings and delicious food and drink. It's like being in a lovely home, without the hassle of housework and gas bills.

In some ways, this is also what Church should be like. I am quite certain that I would not be a Christian now if it weren't for my friends Jon and Tanya, who welcomed me into their home and plied me with lemon drizzle cake. At St Mary's Church we are trying in various ways to offer a warm welcome and generous hospitality - to be an open house. So we are going to try having the Church open more often during the day - perhaps you could help us with this by offering an hour or two to steward? You certainly don't have to be a regular church goer to be a steward.

And then there is our community shop on the High Street - the Village Exchange. A real place of warmth, love and welcome for all. It is more than a shop - its an open house for a chat, friendship and sharing problems. We also have Cuppa and Chat on a Wednesday morning (from 10.30am) in the Church Rooms on Mansfield Road. It too is an open house for a free coffee and cake, playing cards and having conversation, and maybe a little dancing!

During this coming festive season, I hope you discover a warm welcome - a home from home wherever the road takes you. Every blessing, Rev Ian.

St. Mary's Church has had a busy Summer and was pleased to see the Church open on many occasions.

During Open Churches and the Robin Hood Festival week, St. Mary's Church welcomed 100s of visitors to their beautiful historic building. According to legend, Robin Hood & Maid Marian were married at St. Mary's

The overall aim was to show that the church is not just a sacred space but is alive, loved and used regularly by people who are committed to following the way of Christ.

During these events, 100s of visitors looked around the church, meeting parishioners and enjoying free refreshments. Around the church were many of the old 2D cut-out figures from the old Sherwood Forest Visitor Centre.



Many children took part in the 'Children's Trail', newly produced by the church Tourism Group, as well as making Robin Hood Hats and Maid Marion Headdresses, and other arts and crafts activities. The Stewards who helped, and many visitors who shared in the events, had a busy, enjoyable and special time.

The Foliage for this arch, produced during the Open Churches Weekend, was sourced from Sherwood Forest (with permission) and local Edwinstowe gardens. It reflects the beauty of Sherwood Forest and of course our much-loved Robin Hood.



To arrange a visit to the Church call the church office to pre-arrange access to avoid disappointment on finding the church closed.

# Edwinstowe Parish Council

Councillors Can Be Contacted Via The Parish Council Office

**Edwinstowe Parish Council**

*Working to make a difference*

Tel: (01623) 824243

info@edwinstowe.co.uk

theclerk@edwinstowe.co.uk

www.edwinstowe.co.uk

The Parish Council is OPEN TO THE PUBLIC on

Mon..... 10.00am - 2.00pm

Tues..... 10.00am - 2.00pm

Weds..... 10.00am - 2.00pm

Thur..... 10.00am - 2.00pm

Fri..... 10.00am - 12.00pm

Clerk - **Alice Dunn**

Administrator - **Nicola Priestley**

**Mark Spencer MP**

Parliamentary,  
House of Commons,  
London, SW1A 0AA

www.markspencermpp.com  
Social media: @mark\_spencer

T: 020 7219 7143 / 0115 9681 186

Email: mark.spencer.mp@parliament.uk

Constituency - Sherwood Constituency Office  
Room 3, under One Roof, 3A Vine Terrace,  
Hucknall, Nottingham,  
NG15 7HN

**County Councillor John Peck,**

T: 07748181719

E: cllr.john.peck@nottscc.gov.uk



Cllr Celia Brooks  
Chairman &  
District Councillor



Cllr Dennis Tattersall  
Vice Chairman



Cllr John Peck  
& County Councillor



Cllr Chris Ayre



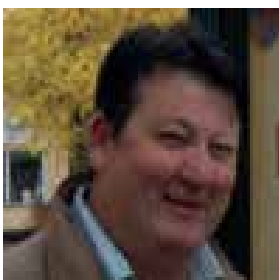
Cllr Liz Benson



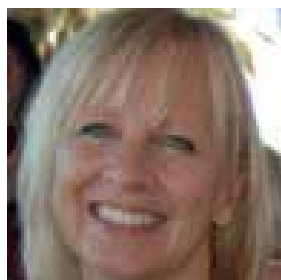
Cllr Michael Brown



Cllr Terry McLaughlin



Cllr Paul Peacock  
& District Councillor



Cllr Karen Peck



Cllr Barbara Starbrook



Alison Troop

# LOCAL SERVICES & GROUPS DIRECTORY

Local (01623) number applies unless otherwise stated

## IF YOU WOULD LIKE TO ADD YOUR GROUP TO OUR DIRECTORY LIST

### Helpful Numbers

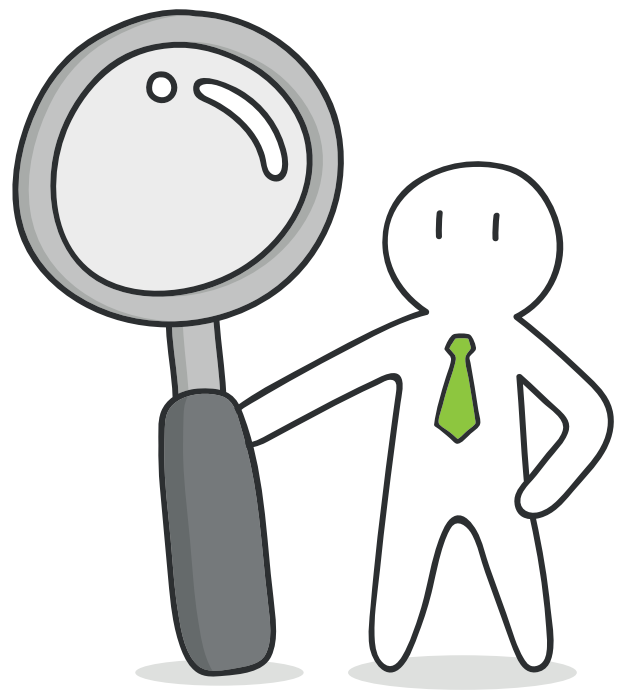
Parish Council Office - **824243**  
 Newark & Sherwood District Council - **01636 650000**  
 Nottinghamshire County Council - **0300 5008080**  
 Citizens Advice Bureau - **0344 411 1444**  
 Major Oak Medical Practice - **822303**  
 Edwinstowe Library - **822280**  
 Sherwood Forest Trust - **821490**  
 Sherwood Forest Visitors Centre - **823202**  
 The Village Hall - **07594 460846**

Please contact

The Parish Council Office on 824243  
 or email: [info@edwinstowe.co.uk](mailto:info@edwinstowe.co.uk)  
 / [the\\_clerk@edwinstowe.co.uk](mailto:the_clerk@edwinstowe.co.uk)

### Local Groups

1st Edwinstowe Beaver Scouts - **823761**  
 2nd Edwinstowe Brownies - **824782**  
 Edwinstowe Historical Society - **822264**  
 Edwinstowe Hospice Support Group - **822070**  
 Edwinstowe Leisure Painters - **01777 870588**  
 Edwinstowe's Helping Hands - **07800 803728**  
 Major Oak Pop Choir - **07450 316756**  
 Dukeries Singers - **822070**  
 Abbey Road Art & Craft Group - **822534**  
 Royal British Legion - **824787**  
 Dukeries Tai Chi Society - **822827**  
 Royal Oak Court Allotment Association - [roc.allotment@gmail.com](mailto:roc.allotment@gmail.com)  
 1st Edwinstowe Guides Group - **823165**  
 1st Edwinstowe Scouts Group - **07511 363328**  
 Lynds Close Luncheon Club - **07800 803728**  
 Sherwood Forest Probus Club - **822256**  
 Abbey Road Whist Drive - **822374**  
 Edwinstowe Youth Club - **07960 481488**  
 1st Edwinstowe Brownies - **07716 818327**



### Schools

St Mary's Church Of England Primary School - **822518**  
 King Edwin Primary School - **822111**  
 Dukeries Academy - **860545**

### Churches

St Mary's Church Office - **822430**  
 St Mary's Church Rooms - **07840 435796**  
 Methodist Church - **825469**

### Nurseries

Bright Beginnings Day Nursery - **822440**

# The Robin Hood Award for 2018-2019 Nominations wanted !

The Robin Hood Award is given to someone from the Ollerton, Edwinstowe, Boughton and surrounding Villages who has served their community tirelessly, often in a volunteer capacity. Previous recipients have come from all walks of life, for instance a Guide Leader, someone helping older people or people with learning difficulties to live a fulfilling life, a community music stalwart, Youth Leaders and the like. The Robin Hood Award is given by the Rotary Club of Sherwood Forest annually; it is a bespoke wooden carving of Robin Hood in a showcase and is unique. The recipient keeps this wonderful carving for a year. The Rotary Club would like nominations for anyone YOU know who you think would deserve to receive the award for 2018-2019. Nominations can be e mailed to [sherwoodforestrc@btinternet.com](mailto:sherwoodforestrc@btinternet.com), or by post to the Secretary-Rotary Club of Sherwood Forest, c/o The South Forest Leisure Complex, Clipstone Rd, Edwinstowe, NG21 9JF. Nominations should be in by Dec 31st 2018. The presentation will be at the Rotary Club of Sherwood Forest's Annual Charter Lunch in January 2019.



**CONTACT The Parish Council**  
 on **01623 824243**  
 or email: [info@edwinstowe.co.uk](mailto:info@edwinstowe.co.uk)  
**Business card sized advert - £25**  
**1/4 page advert - £50**  
**1/2 page advert - £75**  
**Full page advert - £100**  
**Inside front or back cover - full page - £200**  
**Outside back cover / full page - £225**

## EDWINSTOWE VILLAGE NEWS EDITORIAL TEAM

Cllr John Peck, Cllr Karen Peck, Alice Dunn and Nicola Priestley

# COMMENTS

Please email your comments to:

[info@edwinstowe.co.uk](mailto:info@edwinstowe.co.uk) or drop this form in at The Village Hall.

.....

.....

.....

.....

.....

.....

.....

.....

If you would like to submit an article or an advert for the next issue email us at: [info@edwinstowe.co.uk](mailto:info@edwinstowe.co.uk)



Edwinstowe  
**Gutter Cleaning  
& Repair Service**



Damp Problems? | Leaking Gutter Joints? | Annoying Drips?

**DON'T WAIT UNTIL IT'S TOO LATE!**

- ✓ FREE Gutter Inspections!
- ✓ 5★ Reviews & Top Rated!
- ✓ Hi-Reach Gutter Cleaning!
- ✓ We provide OAP Discounts & Group Discounts
- ✓ FREE Quotations!
- ✓ 8yrs+ Experience!
- ✓ 12mth Repair Guarantee!

**10% Off**  
Using This Leaflet

Hi! I'm Martin,  
With our Gutter Vac Machines,  
we can safely clean gutters...  
-which are heavily soiled!  
-above your conservatory!  
-upto 4 storeys high!  
-without our feet leaving the ground!



**CALL FREE TODAY!**  
**0800 009 64 83**  
**www.sudell.co.uk**



Find us on facebook  
[www.facebook.com/SudellCo](http://www.facebook.com/SudellCo)

Yell.com ★★★★★  
Google ★★★★★  
Facebook ★★★★★

