

Edwinstowe Village

— NEWS —

ISSUE: 23

SPRING 2019

www.edwinstowe.co.uk

info@edwinstowe.co.uk

01623 824243



Welcome to the Spring edition of the Parish Magazine 'Edwinstowe Village News' produced by your Parish Council

As usual, you'll find all the news about what is happening in the village and articles from local community groups. You'll also find an article about the parish precept for this coming year - the part of your council tax which is set by the Parish Council. There will be no rise again for this coming year.

This will be the fifth year out of the last six where your Parish Council has not increased the precept as every effort is made to run the council and provide essential services as efficiently as possible. As always, any comments are helpful so we can continue to improve the magazine.

Read more...



From your County Councillor, John Peck

I really like the design of the new Visitor Centre, but many residents have said to me "where's Robin Hood?" I agree. The Robin Hood story and Sherwood Forest are forever linked and one of the reasons visitors come to Sherwood Forest. I met with senior officers of RSPB and the Director from the County Council to tell them visitors are coming away disappointed because more isn't being made of the Robin Hood legend. They have given me assurances that more will be done and plans are afoot, but I will keep making the case for our local hero. After all, Edwinstowe is "Robin Hood's village!"



We're well into the pothole season and as usual I've been stepping up my "pothole patrol." But as always, please let me know of any you see on (07748 181719 or cllr.john.peck@nottsc.gov.uk).

Still on roads, I don't know yet when the long overdue improvements to Ollerton roundabout will start. I'll keep residents up to date when I get further information.

If you are involved in a village community group, you may wish to know that I have a Nottinghamshire County Councillor's Community Fund I use to make donations to local groups. In the past twelve months I've been pleased to be able to give financial support to the Brownies, the Women's Institute, Thoresby Cricket Club, the Village Hall Management Committee, South Forest Bowls Club and Frack Free Sherwood Forest and the Thoresby Miners' Memorial the Parish Council is creating. Please contact me if you think I can help your group.

Lastly, I'm pleased to see our newly refurbished library is open. It's a big improvement and a welcome investment in this important facility. I'm also grateful to the County Council's library service (Inspire) for agreeing to install the defibrillator I purchased with my community fund.



Parish Council win £4,000 grant towards the Thoresby Colliery Memorial

The Parish Council have received a £4000 boost to their project to create a Memorial to those who worked at Thoresby Colliery and those who lost their lives during the 90 years of the colliery's existence. The money has been awarded by Tesco from the "Tesco Bags of Help" Scheme where customers vote in store for three deserving schemes. The Thoresby Memorial project came top and got the largest share of the grant. Chairman of the Thoresby Memorial Working Group, John Peck said "This is fantastic news. We are very grateful to Tesco and all the customers who backed our project. We have now raised around £24,000 and hope to have the memorial garden completed sometime during the Spring or early Summer." John also donated an additional £1,600 out of his Notts. County Council Community Fund to pay for some of the work on the Memorial garden.

The memorial garden will be next to the Village Hall on Mansfield Road. A memorial stone in black granite has been chosen and quotes have been received for landscaping the garden. A history of the colliery board is being designed and the retaining wall and wrought iron fence will be restored.

The Parish Council has also had a further meeting with representatives of Harworth Estates, the Thoresby Colliery developer regarding the design and location of one of the half winding wheels. Councillor Paul Peacock said, "We are grateful to Harworth Estates for donating the winding wheel and helping with a design. Also RSPB have been very generous in allowing it to be sited near Forest Corner. It will remind everyone including all the visitors to our village and the forest, about our proud mining history."

The River Maun public open space project

We reported in our last issue that local builders Woodheads, who are based in Edwinstowe House on the High Street are intending to hand over the land next to the river to the Parish Council to create a conservation area which will be open to the public. Access will be from the High Street, next to the bridge. Councillors Celia Brooks and John Peck have held meetings with representatives of conservation groups and the Environment Agency, Sherwood Forest Trust and Woodheads to begin to look at how the scheme might be developed.

Councillor Brooks said, "There is a lot of interest from various groups in helping and advising the Parish Council on how best to go about creating a wonderful riverside conservation area and habitat for fish and wildlife, which will also be open to the public to enjoy. The area is much larger than people might imagine and it is exciting to be able to create such a green area in the centre of our historic village. We think there will be grants we can apply for to help us financially, there is expertise we can call upon and the Parish Council can maintain the area once established. We might also set up a volunteer group to help with looking after the area."

Work is not likely to start on the project until Woodheads have finished the nearby building development next to the High Street which is likely to be in the next year or two.

No rise in the parish precept for this year!

There will be no rise in the parish precept this year. The parish precept is the part of your council tax bill which is set by the Parish Council each year to pay for essential services in the village to make sure our village is well looked after. This means that in five of the past six years there has been no rise in the precept.

Chairman of the Parish Council Finance Committee, John Peck said, "When we were elected in 2011, we promised to put the finances in order and provide services to the village as efficiently as possible. Over the past few years, we've made a number of efficiency savings which has meant we have kept our share of the council tax bills down."

Chairman of the Parish Council Celia Brooks added, "Despite no rise in the precept in five of the past six years, we have still made sure our staff are out there every day, picking up the litter, looking after the village and making sure Edwinstowe is a place to be proud of. We've also been very successful at raising money by obtaining grants so we've been able to do things such as provide a new park for the village - Jubilee Park and the skate park- and a new play area on Fourth Avenue - without raising the precept." Councillor Brooks said "we will continue to manage the Parish finances carefully and make sure Edwinstowe is the best looked after village in the area".

The following are services and facilities provided and looked after by the Parish Council:

Daily litter picking and general maintenance of village facilities

Dog bins and litter bins

The three car parks

Jubilee Park and the skate park, Fourth Avenue and Henton Road play areas

The Parish Cemetery

Ollerton Road and Boy Lane allotments

The War Memorial

The Village Hall (run by the Village Hall Management Committee) and Parish Office

Hanging baskets and floral displays on the High Street and the Christmas lights

Organising village events such as the Christmas lights event

Publish the Parish Magazine, "Edwinstowe Village News" and maintain the website

Bid for grants to provide amenities for the village (eg the skate park, children's play areas etc)

Liaise with bodies such as the police and other authorities to speak up for village issues

Campaign on issues eg our campaign against fracking in the Sherwood Forest/Edwinstowe area

Edwinstowe Christmas lights Event verdict - "best ever"

Christmas seems a long time ago but as this is the first issue of the magazine since the event, we ought to give it a mention. Many residents told us they thought this year's event was the best ever, with even more happening not only on the High Street but in the Church Farm courtyard, Market Garden, the Church and Village Hall.

It's difficult to estimate but it's thought there may have been around 5,000 people visiting the event during the course of the evening. The lights were switched on (after a couple of worrying moments when they failed to come on!) by Rev. Ian Webb, Vicar of St. Mary's Church. Chairman of the Parish Council events sub committee, Councillor Karen Peck said, "We were delighted with how the switch on event went this year. It's grown to be one of the best lights switch on events in the area and many visitors come from surrounding villages.

The Parish Council works hard to organise it and I'd like to especially thank the Parish Clerk, Alice Dunn and the Parish Council staff who work so hard before and during the day to make it such a success. Also a big "thank you" to all the traders and community groups who contributed and played their part in a great Edwinstowe community event."



Defibrillator for the High Street



A life saving defibrillator has been installed outside the entrance to Edwinstowe's newly refurbished library. It was paid for by a donation to the Parish Council by County Councillor John Peck out of his Nottinghamshire County Council Community Fund. John said: "We know defibrillators save lives.

They can give someone a chance of survival before the first responders or paramedics arrive. We've been looking for a suitable location on the High Street and I'm very grateful to Inspire, who run the library service on behalf of the County Council, for agreeing to install the defibrillator as part of their refurbishment scheme."

Other locations of defibrillators in Edwinstowe are at Abbey Road community centre (supplied by the Parish Council), the fire station, Thoresby Cricket Club have also installed one at their pavilion, King Edwin Primary School and the Big House on Church Street.

Planned extension of the Parish Cemetery gets the go ahead...

The Parish Council have reached a provisional agreement with landowner, Thoresby Estate, to lease sufficient land to double the size of the Parish cemetery. Speaking at a recent Parish Council meeting Councillor John Peck, who chairs the finance committee, said: "Thoresby Estate have been very helpful and offered us a 99 year lease. There will be substantial works required at some point in the future but we expect the money will come from the community money from the planned housing developments in the village, so there shouldn't be any cost to Edwinstowe council tax payers."

Councillor Karen Peck said: "It was only a year ago that we were concerned about the cemetery filling up, and what we would do when it was full. It seems like things have come together really quickly and those involved should be congratulated."

Councillor Chrissie Ayre chairs the cemetery sub committee backed these comments: "This is really good news. Thoresby Estate have been very generous and helpful. Residents can be confident that when their loved ones pass away, they can be buried in their home village."

Residents are reminded they can reserve a plot for a burial or cremations by contacting the Parish Council office.

CCTV FOR HIGH STREET

A petition collected up by Edwinstowe High Street trader Scott Carlton calling for CCTV to be installed on the High Street, following a spate of incidents was handed to the Chairman of Newark and Sherwood District Council, Councillor Keith Walker, by Edwinstowe's District Councillor Celia Brooks. The petition was signed by 620 members of the public. Councillor Brooks, addressing the council meeting said: "Edwinstowe generally has a fairly low level of crime but over the past fifteen months, there have been some break ins and vandalism against businesses on the High Street, as well as attacks on cash machines. I think it's a good idea to install CCTV and the Parish Council supports the traders. We have since learned that Newark and Sherwood District Council have agreed to install the CCTV."

After a number of incidents including raids on both the cash machines on the High Street, the Parish Council expressed support to the traders and passed a resolution calling for the District Council to provide CCTV.

The Parish Council also organised a meeting with representatives of High Street businesses, the police and an officer from Newark and Sherwood District Council to discuss the matter. The Parish Council also invited the new area Senior Police Officer, Inspector Heather Sutton, to the January Parish Council meeting to talk to councillors and discuss policing in Edwinstowe. Councillors made a strong case for more visible policing in the village. Councillor Paul Peacock has also arranged for a walkabout with Police and Crime Commissioner, Paddy Tipping to discuss local policing matters with him first hand.

Councillors meet regularly with the police at the Safer Neighbourhood Group meetings to raise issues about local crime and crime reduction. There are also beat surgeries held monthly in the Parish Council office.



The Parish Council campaign against fracking

The Parish Council has been actively campaigning against proposals which may lead to fracking for shale gas in the Edwinstowe and Sherwood Forest area. Parish Councillors Alison Troop and Karen Peck have been in the forefront of the campaign and represent the Parish Council on the Frack-free Sherwood Forest and Edwinstowe group. Councillor Karen Peck recently made the following statement which was printed in the Chad (it has been slightly edited):

"I am opposed to fracking generally. It is unproven and the evidence from other countries gives us cause for concern. We are a small parish in a small area around Sherwood Forest and are concerned about the real impact of fracking on the local community. The government is talking about going ahead with fracking without going through full planning procedures and we are concerned. We are trying to raise concerns of the risks.

We are a growing centre of tourism and people see there is the scope to Frack underneath Edwinstowe and Sherwood Forest. Even though the rigs would not be in the ancient part of the forest, they are looking at testing in the outer forest area.

We've been watching with concern what has happened in the Blackpool area with earth tremors. There are reports which say Fracking in mining areas has an added risk and we are in the centre of a coalfield area. Drill sights would be unsightly and it would have a much greater impact than people realise. It would bring increased traffic to the roads, but minimal jobs. If fracking happens here we will stop being an area of natural beauty and become a gas field."

County Councillor John Peck also presented a petition opposing fracking in the area, of over 3000 signatures on behalf of Frack Free Sherwood Forest and Edwinstowe, to the Chairman of the County Council, Cllr. Sue Saddington at the December meeting of the County Council.

Also, at a meeting of Newark and Sherwood District Council, Edwinstowe's Councillor Paul Peacock submitted a motion which was approved by the council calling on the government not to allow permitted development in respect of fracking, which would allow shale gas exploration companies to avoid the normal planning processes. Paul said: "If the government go ahead with this, residents will have little or no say in whether or not fracking happens in their communities."

All Change at the Parish Council Office!

Well not quite.

However; we are losing two key members of staff in the Spring.

Our Clerk, Alice Dunn leaves at the end of March for personal reasons. She has served the Council extremely well in the 11 years that she has worked for us and previous Councils.

Alice is an excellent ambassador for the Council and is respected by officers and Councillors from other authorities for her competence and efficiency as well as a dry, and sometimes wicked, sense of humour.

As Councillors we know that Alice carries out the wishes of the Council without question and with due diligence. Alice has worked particularly hard on projects such as the Christmas Fair and the Tour of Britain event, amongst others, in addition to her normal workload.

She has worked as a trusted member of our workforce throughout her time with us, particularly as the most senior member of the team. She will be greatly missed but we wish her well for the future.

Retirement

David Stocken, our senior amenity worker, is retiring at the end of April. David has worked for the Parish Council for 14 years and has been key in keeping up the standards of cleanliness and maintenance of village amenities that we all take for granted.

He has led his team of amenity workers well and has ensured that we have a village to be proud of. People from outside the village comment on the presentation of our village in very favourable terms and David has played a key role in influencing that.

There is very little that David has not been able to put his hand to and has been a very reliable and effective worker, displaying a range of skills that are beyond what might be expected of him.

We wish David a very happy retirement, he too will be missed.



Allotment Alert

If you are interested in renting an allotment we have vacant plots at the Ollerton Road site.

There are a variety of size plots available.

The rental year begins in March so please get in touch with the office if you would like to take advantage of the chance to grow your own produce .

Not only will the fruits of your labour be very good for you, but its an excellent way to get exercise without paying fees at the gym!

If you would like to know more contact the office on 824243 or by email.



Local MP Mark Spencer

Since Christmas I've continued working alongside Scott Carlton to follow up on his sterling efforts in securing CCTV for Edwinstowe High Street. When I knock on doors in Edwinstowe, something that people always mention as a concern is petty crime and anti-social behaviour. I'm hoping that the installation of the new CCTV camera on the High Street will help the police and council in their work to tackle this problem. Scott has been a real champion for this campaign and I'm hoping to be able to work with him in the future as we make sure that Edwinstowe continues to improve as a great place to live. I know that local businesses are also keen to see this issue resolved so that people see the High Street as somewhere where they actually want to come and spend time. That's why I'm so pleased that Newark and Sherwood District Council have voted to grant £10,000 for the scheme, which will cover the installation of the CCTV system, maintenance, and monitoring from the NSDC CCTV control room.

Another topic which gets a lot of mentions on the doorstep is the roads in Nottinghamshire. I'm delighted that the Government has granted the extra money to carry out safety work on the A614, but now we really need to make sure that there's a business plan in place to carry out these vital improvements, including at the Ollerton Roundabout. I'll continue to put pressure where it's needed to make sure that the money is spent well.

Lynd's Close – We Will Remember

During the week of Remembrance Day Lynd's Close tidied up their garden in preparation for placing crosses for each of the Diners that have passed over the five years that we have been serving lunches. Some of those diners were part of the conflicts that have been endured over time. Ten crosses have taken pride of place in our small garden that we pass on our arrival at the Community Lounge each week.



On Sunday 11th November Sue Howells (volunteer) attended the Edwinstowe Remembrance Service with Jim Donnelly (Diner) and Owen Donnelly MBE (Diner). These three people represented Lynd's Close Luncheon Club and proudly placed our poppy wreath at the War Memorial in remembrance of all those that have lost their lives in all the conflicts over time.



Lynd's Close Fifth Birthday Lunch

On Thursday 1st November the Diners of Lynd's Close sat down to celebrate the fifth birthday of the Luncheon Club. From small beginnings with only a few diners, the volunteers regularly cook and serve a three course meal to 40 diners. Some of the diners now arrive by taxi and they are supported into the centre by volunteers. Our taxi drivers now know the diners well and are very good at assisting them on their journey to and from the luncheon club. DW cars and Briar Taxis work well together in support of our Diners. The three course lunch consisted of home-made Leek and Potato Soup, Roast Beef, Yorkshire Pudding, Roast Potatoes, Mash, Cauliflower, Brussels, Gravy with Individual Fruit Trifles for dessert.



A birthday cake was baked and shared with the Diners to mark the fifth birthday celebrations. The diners are served tea or coffee on arrival and have orange and lemon squash or water with their meals. Those with particular food allergies are catered for with alternatives for them to enjoy.

A great deal of time and effort is put into making this Luncheon Club a success.

There is a social Friendship Group which meet on Mondays from 2pm for two hours at Lynd's Close for chat and bingo. They enjoy hot drinks and cakes and all are welcome to join the Monday group.

Report written by D.Morgan - volunteer



100 YEARS
of forestry 1919 - 2019

Forestry Commission January 2019

I am Amy Chandler, Community Ranger, Forestry Commission. This year is our centenary. In September 1919 the Forestry Commission was founded to restore the nation's woods and forests following the First World War, and the passing of the Forestry Act.

We are now England's largest landowner and look after over 1,500 forests. We deliver internationally renowned research in sustainable forestry and help other landowners make their woodlands more productive, better for wildlife, and prepared for the challenges of a changing climate.

Exciting events and activities will be happening across the country to mark the anniversary including Forestry 100 a series of 10km events, The Big Forest Find and Love letter to a tree along with centenary tree planting in November. Find out more at www.forestryengland.uk/100.

A lot of work has been happening in the Birklands recently including haloing round ancient oaks, harvesting birch and felling red oak and sweet chestnut.

There is a hope the timber will fetch a good price to support the wildlife and community work of the FC. The Friends of Thynghowe (www.thynghowe.org.uk) have been opening up paths and removing invasive rhododendron.

I am always looking for more volunteers so get in touch if you are interested.

Forest Live is back for 2019. Confirmed acts are Paul Weller and Jess Glynne. One more act will announce soon. For tickets visit www.forestryengland.uk/sherwood-pines.

If you want further information or you have a question feel free to get in touch at amy.chandler@forestry.gov.uk or ring me on 0300 067 5443.

Tuesdays – (unless stated)
 12 March 2019
 2 April 2019
 15 May 2019 (including AGM)
 (Wednesday)



THE TYRE SHOP

**New, Remould and
 Part Worn Tyres
 Wheel Balancing**

Unit 17 Beacon Court
 New Ollerton
 Nottinghamshire, NG22 9QL

Tel. James:
01623 836306

Mobile:
07866507083



www.tyreshop-online.co.uk



WHAT GOES ON HERE AT THE ABBEY ROAD COMMUNITY CENTRE

Monday

Emily's Friendship Group

Starting at 9.30am

Monday Evening

Evergreen Club - Social/Bingo

Starting at 6.00pm

Tuesday Afternoon

Emily's Exercise Class

Starting at 1.00pm

Wednesday Evening

Evergreen Club - Dominoes/Bingo

Starting at 6.00pm

Thursday Evening

Whist Group

Starting at 6.00pm

Friday Afternoon

Abbey Road - Art/Craft Group

Starting at 1.00pm

Friday Evening

Evergreen Club - Social/Bingo

Starting at 6.30pm

Sherwood Pines launches Zog Trail

Following the success of the Gruffalo, Stick Man and Highway Rat trails at Forestry Commission sites across England, Julia Donaldson and Axel Scheffler's magical children's picture book, Zog, will be the new activity trail for families to enjoy at Sherwood Pines. Launching on 11 January, the trail will follow the premiere of the animated special from Magic Light Pictures, on BBC One this Christmas.

Zog is a loveable, if somewhat clumsy dragon at Dragon School who is always striving to win a golden star. Zog is learning lots of essential dragon skills at school including flying, roaring, breathing fire and capturing princesses! Forestry Commission England are now inviting children to step into the forest classroom to learn lessons just like Zog, including how animals fly, what sounds they make and how they catch their prey!

As well as winning gold stars along the self-led trail, there will be reveal panels which have a hidden image that children can find using a coloured lens in their activity pack. Available to buy for just £3 the activity pack will also include a Zog mask, activity sheets a pencil and stickers.



Join Zog on his magical forest adventure at Sherwood Pines.



Abbey Road Art and Craft Group

Abbey Road Art and Craft Group continues to flourish at the Community Centre on Abbey Road in Edwinstowe.

Having just enjoyed a delightful Christmas Lunch in December at the Community Centre, provided by Tracey & Jason Wilson. Members and Guests are now back to the regular Knitting, Painting, Card Making, Parchment and other Crafts sessions and generally enjoying themselves.

The Artists are still producing amazing work and can even create Portraits from Photographs to bring images 'to life'.

This happy group welcomes old and new friends to join them on Friday afternoons from 1.00pm to 4.00pm and enjoy a Natter with Tea/Coffee and Biscuits with friendly Crafters whilst carrying on with their favourite hobby. Help is always available to develop new skills. Craft Materials are available to buy at low prices.

Admission per session is £1 to cover the costs. Don't be shy, just turn up at Abbey Road Community Centre.

You will be most welcome !.



Women WI Village News

At the time of writing (mid Jan) we are celebrating our first birthday! We said goodbye to 2018 in a frenzy of activity. We served refreshments and sold our baking and crafts in the Village Hall at the Christmas Lights event. We also had an information stall on the High Street where we handed out information and samples of our baking - very popular with everyone who came up for a chat. Our Christmas meeting was party night and members brought along a lovely selection of food to share. Alex from Launay's demonstrated cocktail making (we tasted too, of course) and we enjoyed a fabulous performance by the Rock Choir.

Our maiden year was a great success and we enjoyed many varied meeting subjects, trips out, and craft workshops. We finished the year with 49 members and lots of ladies who visit when they can. We also started supporting local causes and events. We made new reading bags for St. Mary's School and donated a set of books to both the village primary schools for children experiencing divorce or bereavement in their family. We supported a local Guide with her fundraising efforts and hosted a tea and cake stall for the Fire Station Open Day. Do you know a local cause we can support? We'd love to offer our help wherever we can in 2019 so please get in touch.

19th March - AGM and learn Makaton

16th April - Flower Arranging (Extra charge for materials for non members)

21st May - Music Workshop

Membership of Edwinstowe Merry Women WI is open to all ladies from Edwinstowe and the surrounding areas. Meetings on 3rd Tuesday of the month. We welcome guest visits which are charged at £5 each. Do come along and see what we have to offer!

Phone: 07780 474142

Email: edwinstowemerrywomenwi@gmail.com with any questions.

Facebook: Edwinstowe Merry Women WI

Coming Up



AW Safety Management Spearheads local Defibrillator fundraiser



Pictured Above left to right: Pete Coleman of The Business Integrity Group and Classic Print Ltd, Danielle Shaw and Adrian Kirkby of AWSM Ltd, Lindsey Marsh – Deputy Head, Amanda Neuville – AWSM Ltd Training Centre Manager and Year 6 pupils Josh Farish & Sylvain Pennington.

A fundraiser which topped more than £900 in total sponsored by the AW Safety Management Ltd with many other local community businesses saw the new device (complete with paediatric pads for smaller children) donated on the 9th November 2018 at King Edwin Primary School in Edwinstowe.

First Aid, CPR and AED trained staff at the school coupled with complete and easy access to the new defibrillator will hopefully ensure greater chance of survival should it ever be required

AW Safety Management Ltd would like to say a special “thank you” to the following partners for making this donation a reality:

Co-operative Edwinstowe, Royal Oak Public House, Hair by Design, Black Swan Public House, Fellaz Barbers Shop, Forest Lodge Hotel, Launay’s Restaurant, Butler Evans Risk & Insurance, The Business Integrity Group and JBT Joinery & Building Ltd.

AWSM offer a range of Emergency and First Aid in the Workplace courses open to business and public, for more details call the office on 01623 821516 or email: training@awsafety.co.uk or check our website for further details www.awsafety.co.uk

AW Christmas Foodbank

AW Safety Management a H&S Consulting and Training company based in Edwinstowe have once again come together with the help of the local community to collect Christmas goodies and treats for the local food bank in Ollerton. With the help of Edwinstowe House Business Community, St Mary’s Church and both St Mary’s and King Edwin School we’ve managed to spread some Christmas cheer and donate to make someone else’s Christmas that little bit more special.

Foodbank Manager Lynn Matthews commented that “their supplies were down to their last 2 tonnes but thanks to the support of local business they are now back up to 6 tonnes and the addition of our “Christmas Goodies” food drive would be weighed in and distributed to those in need of assistance”

A special thanks from everyone who donated or supported in our ongoing efforts as part of our “giving back to our community” initiative.

Amanda Neuville

Pictured:

Amanda Neuville – AWSM Training Centre Manager

Danielle Shaw – AWSM Account Manager

Lynne Matthews – Ollerton Foodbank Manager



Thoresby Colliery Regeneration Update

Good progress has been made on the former Colliery regeneration, now known as 'Thoresby Vale, Edwinstowe', with the first parcel of land for up to 150 homes (phase 1) generating a good level of housebuilder interest which was sufficient for the developer, Harworth Group plc, to agree terms with a well-known housebuilder before Christmas.

The proposed scheme will comprise of high-quality 3, 4 and 5-bed semi-detached and detached homes.

By the time of publication, it is hoped that the site-wide Outline Planning Permission will be issued. Harworth also intend on shortly submitting a follow-up Reserved Matters application for the improvements to the Ollerton road entrance, spine road and landscaping amongst other things. This programme of enabling works is likely to commence onsite in Quarter 2 this year.

Harworth have agreed with the Parish an indicative scheme to relocate one of the existing pit wheels, currently located at the former Colliery entrance, to an area of land near Forest Corner.

The details are still to be confirmed and are subject to planning, however it is hoped this will provide a suitable connection with the site's historic use and appropriately positioned along the key footpath link connecting the site with Edwinstowe.

Further details will be released in due course and will also be available on the official website at www.thoresbyvale.co.uk



Edwinstowe & The Dukeries Lions Club had a very successful Sleigh Run again in December. A total of £8800 was raised from all the surrounding villages and Tescos in Ollerton.

The money that has gone into the benevolent fund will be used to support many local groups and individuals in our community. Huge thanks to all who once again have supported Santa and the Lions so magnificently.

Lions clubs in Nottinghamshire, Derbyshire, Leicestershire and Lincolnshire are looking for young people to help with a Plastic Pick Up day in May. The National Trust has allocated 6 sites in the Peak District where the pick up will take place.

Please help with this very important initiative.

The Lions are very keen to raise awareness of waste plastic that has become a danger to our environment. If you are a member of a club, team or any organisation, the Lions need your help.

The information on the Plastic Pick Up is on the poster, which is featured in this issue of Edwinstowe Village News. Please contact Keith Hobbs or me for more information.

The poster is also featured on the Parish Council website and on the Lions website: www.lions105e.org/new-generation-lions.

During the months of February and March the Lions assisted the Marie Curie Great Daffodil Appeal. Once again generous donations will go to helping families who have been affected by cancer.

For more information regarding Lions please visit www.lions105e.org
Or call Steve Scall on 07779 338887.



Harworth



Restart-a-heart-event at King Edwin Primary School



In response to British Heart Foundations yearly “Restart-a-heart day 2018, yesterday 17.10.18 AW Safety Management a local H&S and First Aid Training provider for East Midlands, had another great opportunity to contribute as part of our ongoing effort this year in line with our strive to “give back to the community” by providing free emergency CPR demos, after the demonstrations it was great to see teachers and grandparents alike take part and learn how to save a life and to understand the basic differences of treating an adult versus a child or baby.

King Edwin Primary kindly hosted the after school event with around 40 people in attendance but then with a staggering additional 643 views on their Facebook page of the live video event streamed by the headteacher.

Attended, arranged and promoted by:

Amanda Neuville: – Training Centre Manager, CPR trainer: Glyn Bagshaw: – Associate trainer for AW Safety management
Andy Callaghan-Wetton - Headteacher, Owner AW Safety: Adam Wade – Managing Director

High 5 Day at King Edwin Primary School

The children at KEPS started 2019 by hitting the High Street and banishing any sign of Blue Monday in Edwinstowe. The children named themselves ‘The Blue Crew’, dished out many a ‘High 5’ to members of the public and waved at passers-by with the intention of raising spirits within our wonderful village.

KEPS was joined by over 70 schools across the County in their attempt to combat the negative emotions associated with ‘Blue Monday’ and over 20,000 children took part in this heart-warming initiative.

The support received was fantastic and there was an overwhelming feeling of positivity, none more so than outside the library as the children waved at the cars and at one point, even stopping a police patrol car to give the police officer a giant ‘High 5’ too.

It seems that physical communication or even eye contact seems such a rare emotion nowadays, possibly due to the invention of new technologies such as a mobile phone. Of course we mustn’t underestimate how positive new technology has been in enabling better socialisation and King Edwin certainly makes use of this with our Twitter and Facebook pages however, you can never beat a good ‘High 5’, big hug and a smiley face!

Our children gave these out in abundance on Monday. Our school, our village and our children felt all the better for it at the end of the day and it was a lovely experience.

Perhaps we can do this all again next year and if you care to join us, don’t hesitate to get in touch. Visitors from our community are always very welcome. Our School Ambassadors love to show people around their school.

Mr Callaghan-Wetton



Council provides grants to improve home heating



Newark & Sherwood District Council currently has grant funding available to help local residents on low incomes to repair or replace inadequate heating systems.

If you or someone you know is on a low income and suffering with a long term health condition made worse by living in a cold home, the council may be able to help thanks to the Warm Homes on Prescription scheme.

Last year Newark & Sherwood District Council supported more than 30 home owners (and two tenants renting from private landlords), to make their home warmer, potentially avoiding unnecessary hospital admissions due to cold-related illnesses.

A Newark resident who recently benefitted from the scheme said:

"I suffer with mobility problems so spend a lot of time at home and feel the cold. My old back boiler broke down just before Christmas. I couldn't afford to repair or replace it and I was getting a bit depressed with the situation so phoned the Council – they were brilliant. I've now got a new gas boiler and my home is toasty and warm again!"

If you would like to know more about the Warm Homes on Prescription scheme, contact Newark & Sherwood District Council on 01636 650000.

For further information contact Newark & Sherwood District Council on 01636 650000 and ask for Winter Homes on prescription. Alternatively email winterwarmth@nsdc.info with your details or fill in the online application form on Newark & Sherwood District Council website.



D.W CONSTRUCTION

Local Builder & Bricklayer

PROFESSIONAL, AFFORDABLE, RELIABLE SERVICE

New Conservatories, Conservatory Renovations, Garage Conversions, Single Story Extensions, Porches, Boundary Walls, Re-roofs, Chimney & Roof Repairs, Lintels, Insurance Work & Much More...

Visit: www.dwconstruction.co.uk

Call Now for FREE Quote: 07952093143 or 01623 847267



WOODHEAD FUNERALS

empathetic · considerate · respectful

A Compassionate and Caring Service



Continuing to serve Edwinstowe and the surrounding area with our Funeral Services since 1946 and with roots in funeral undertaking dating back as far as the mid 1800's

Contact — Melanie Bainbridge

Office: 01623 871101 or

Mobile: 07817 120487

Please ask us about our pre-payment funeral plans managed by Perfect Choice part of Ecclesiastical Planning Services.



Information regarding a Plaque

I am trying to find information regarding a Plaque that was made after the death of Nellie Beardsley, who was killed on Edwinstowe High St on the 30th August, 1930. There were two other names on this plaque of other Edwinstowe residents who had also died on various dates. I understand that for some years this plaque was on display in the window of a shop that I now believe is the Solicitors on the High Street. It was eventually taken down, and then displayed in St. Mary's Church for some time.

If any other resident of Edwinstowe could find some information on this request, that would be very helpful. Thank you.
Kind regards Kathleen Lishman (01623 473308)

Rotary Club of Sherwood Forest

1 Thanks to the generous people in our area, our Christmas Collection outside the Ollerton Tesco the last weekend before Christmas was a great success. We raised a total of over £1,400 from kind donations at Tesco and at the OVRA Carols in the Memorial Gardens earlier in December. These funds will be distributed to various local groups as usual in the next few months – be assured they all go to very good causes. Thanks to Tesco and OVRA for their assistance.



2 We had a joint meeting with our Rotary colleagues from the Ravenshead & Blidworth club where our District Governor, Cheryle Berry MBE spoke to us about the message from Rotary International and her own aims for her year in office. Cheryle is very keen on promoting the Community Save a Life web site, where you can sign up and complete on-line first aid training enabling you in the basic skills to potentially save a life before the Emergency Services arrive.

Please go to <https://www.virtual-college.co.uk/prepared> where you can sign up and access the training – this is certificated by QUALSAFE and is FREE.

Cheryle and Community Save a Life are endeavouring to get a “life saver” on every street in the UK. Both organisations & individuals can sign up. The Presidents Derek Storton (Sherwood Forest) and John Middleton (Ravenshead & Blidworth) thanked Cheryle for her talk and pledged to take her mission to our communities.

4 Forthcoming speakers booked for the next 6 months include a local Author of Crime Novels Trevor Negus, a night with Scenes of Crime, learning about the Webb Family of Newstead, Peter Young – an auctioneer, a visit to Laxton Mound on May day and much much more. Please contact Sec Stella Herbert (stella.herbert@btinternet.com or 07712 884487) for more details.

We welcome visitors at any time, but especially to our Last meetings of the Month events – please e mail Club Sec Stella (stella.herbert@btinternet.com) or speak to any Rotarian. We meet at South Forest Leisure Centre, in Edwinstowe on a Wednesday evening, at 7.00pm. See us on Facebook too (Rotary Club of Sherwood Forest <https://www.facebook.com/Rotary-Club-of-Sherwood-Forest-273940476077102>).

Rotary serves YOUR Community, much of the funds we raise go to local organisations and charities.

If you would like to join the Rotary Club of Sherwood Forest or one of the one of the other 100-plus Rotary Clubs across the Newark & Ollerton areas visit www.rifi.org .

Rotary Clubs are open to men and women of all ages who are business, professional or community leaders and who want to use their experience for the benefit of others.

3 The Rotary Members, with our Inner Wheel Colleagues and our guests attended our Christmas Message meeting before Christmas.

Rev Anna Alls from Bilsthorpe was our speaker and gave us a very humorous and thought provoking view on how Mary being “with child” would have been communicated by a teenager today.

We enjoyed a taste meal as always at the South Forest Leisure Centre, and a raffle raised £180 for the Ollerton Community Band who entertained us with sing a long Carols and Christmas songs. An “instead of Christmas Cards” collection raised £55 which will go to the John Eastwood Hospice.



Major Oak Medical Practice Patient Participation Group

The Practice Manager has informed your PPG that recently patients completing a Friends and Family Test (FFT) questionnaire card after a visit to the surgery has fallen off markedly, these cards enable patients to choose one of six statements shown on the card from extremely likely to recommend the service to friends and family, to extremely unlikely or don't know.

There is also a space for patients to say why they have chosen a particular statement reflecting their experience on that particular visit. Your feedback, whether praise or criticism provides valuable information for the practice to celebrate positive feedback and identify opportunities to make improvements.

Whether you add your name or contact information to the card is up to you, but if you do it means the practice may contact you if necessary for further information. The comments and observations are analysed by the practice and shared with your PPG so that patient led solutions to observations or criticism which the practice perhaps may not have considered can be made at that PPG meeting.

You can be confident that where patients have given their name and contact details these are never shared with the PPG, this remains confidential.

FFT cards can be found in the surgery waiting area alongside a box to return them when completed

The Royal Oak Court Allotment Association

2018 was a good year for the Ollerton Road Allotments. After years of strife we felt that the allotments were moving forward, we welcomed new faces, the atmosphere was positive and we have great plans for the future.

It was especially nice to have younger people on the plots and to see children playing and adding their tuppence worth!

We are hoping to involve the community of Edwinstowe in what we plan and in the past year have held a Scarecrow Competition during The Robin Hood Festival and a Pumpkin Competition. Our plans are more ambitious for 2019.

We, again are planning a Scarecrow Competition to coincide with The Robin Hood Festival. We are thinking about an Open Day, sales of surplus fruit and vegetables and a communal allotment with a small play area.

All these ideas are in the early planning stages. If anyone can think of anything else that we could become involved with please let us know.

If you would like to try growing vegetables there are vacant plots and plenty of support and advice available.

Adam Murphy or Eileen Cormack, Chairperson Royal Oak Court Allotment Association Secretary. Tel: 07968 436310 / 01623 823880.



Police Beat Surgeries

During one of our last beat surgeries it was raised that many people are unsure how to report crime and anti-social behaviour to the Police.

For non-emergencies you must call us on 101 and in an emergency call 999

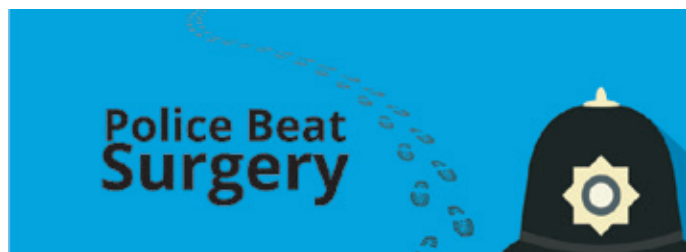
Local beat officers have work mobile phones however it is not best practice to report incidents directly to them on voicemails or text messages. The officer may be off duty or on period of annual leave. Therefore the messages would not be read until their return, which could be several weeks. If just want to let us know something or request a call, then by all means a text or voicemail is fine.

Alternatively you can report crime online. You can use this service to report a non-emergency crime or incident to the police. You can do this at report.police.uk

Before you start

Call 999 to report an immediate threat to life or property. (Textphone: 18000)

1. You'll need to provide an email address or phone number.
2. All reports are reviewed by the police and if necessary we'll respond by email or phone within 24 hours.
3. Your report will be sent over a secure internet connection and all information will be treated confidentially.




District 105E


New Generation Lions

Plastic Pick up!

LIONS need your help

on 11th & 12th May

at 6 National Trust sites

Sponsored by

Veolia Recycling

Contact - Keith Hobbs (District Environmental Officer)

Mobile: 07771 894 456 email: hobbs_keith@hotmail.com

www.lions105e.org/new-generation-lions

KEY BUILDING SUPPLIES LTD

FOR ALL YOUR BUILDING & LANDSCAPING NEEDS...



STOCK READY FOR SUMMER...

Growbags, manure, compost, bark, top soil, garden equipment, decorative gravels, paving, block paving, decking, trellis, fencing, posts & plinths, path edgings, copings, pier caps, BBQ gases & charcoal, rockery stone, railway sleepers, plus many more products coming....

Stockists of blocks, bricks, cement, aggregates, plasters and boards, lintels, roofing materials, UPVC fascia's, all sheet materials including plywood, m.d.f etc, studding, skirting, door frames, R.S.T, P.S.E, house coal, smokeless fuel & logs.



Come and have a look around our on-site shop, it's now fully stocked with everything you could need. Our ranges are plumbing and electrical fittings, building additives and adhesives such as silicone, no nails and sealants. Screws, nails and fixings, tools, paints, stains and varnish, PPE and work wear. We are very competitively priced & offer advice and estimates free of charge...



KEY BUILDING SUPPLIES LTD
ROAD C,
BOUGHTON INDUSTRIAL ESTATE,
BOUGHTON,
NEWARK, NOTTS,
NG22 9LD.

Tel: 01623 861735

keybuildingsupplies@hotmail.co.uk

www.keybuildingsuppliesltd.com

Brick cutting service, also brick slips & arches: www.keybrickcutting.com



NOTTINGHAMSHIRE
Fire & Rescue Service
Creating Safer Communities

EDWINSTOWE



01623 824976 website. fossils4sale.co.uk stone.treasures@hotmail.com

Hospice Support Group

We were very pleased that our fund raising throughout 2018 enabled us to donate a further £6000 to The John Eastwood Hospice at our Coffee Morning on Saturday 24th November. Hospice Trustee Helen Gregory received the cheque and thanked everyone for their continued support and we, in turn, thank all helpers and supporters. The Coffee Morning itself raised a very rewarding £611.70.

Thursday 29th November was the occasion of the Christmas Lights Event on the High Street and the Support Group had a stall raffling Christmas Hampers. We are thrilled that, due to the tremendous generosity of the public, the stall raised a magnificent £486, our best ever figure for this event. Thanks to all those who bought tickets and to our ticket sellers and helpers.

During the weeks prior to Christmas we placed badge boxes at Mills Newsagents, Barbara's Pet Shop and the Pharmacy. We thank these traders for their willingness to have the boxes on their counters and for the combined sum of £186 which was raised. We also thank Robin Hood Plaice chip shop, Sue at Hair Design and Goff's Butchers for having collecting cans throughout the year.

November and December have again been successful months for fundraising and we look forward to continuing during 2019. Please note that our next Coffee Morning is on Saturday 16th February in the Village Hall from 10.00am to 11.45am followed by our Coffee Morning and Plant Sale on 18th May.

During January and February Nottinghamshire Fire & Rescue Service (NFRS) has been inspected by Her Majesty's Inspectorate of Constabulary and Fire & Rescue Services, the first inspection of this kind. This inspectorate independently assesses the effectiveness and efficiency of police forces and fire & rescue services in the public interest. The reports from this tranche of inspections will be published later in the year for all to see. It will mean we can learn from other services, determine best practices and areas in which NFRS can develop.

Providing an insight into NFRS, when a fire is out our work doesn't end. The Fire Investigation team begin their role in discovering the cause of a fire. Their work can lead to criminal investigations, public reassurances, safety advice being issued, and sadly sometimes inquests if the incident has been fatal. In 2018, investigations concluded tumble dryers and other household appliances, combusting tea towels, fireworks and arson as a few of the causes of incidents in Nottinghamshire.

Working with the Police, fire investigation works on a process of elimination, as opposed to trying to pinpoint the cause from the beginning. Different causes are suspected and investigated. If it is not possible to determine a cause, a suspected cause based on the team's knowledge, experience and an examination of the scene is made. The team always go through the same process. Whilst no two incidents are the same, the factors they look at always are.

If you are interested in further updates from Nottinghamshire Fire and Rescue Service, please follow us on social media:

- Facebook - @NottsFRS
- Twitter - @nottsfire
- Instagram - @nottsfire
- YouTube - NottsFire



1st Edwinstowe Scout Group



We started the year off with a group trip to Mansfield Super Bowl. This was our Christmas/New Year party. We had a fantastic night.

Thank you to everyone who supported us this year by using the scout Christmas post, we had another good year.

We would also like to thank the Edwinstowe Co-op for choosing us as one of their charities this year and all the help they have given to us this past year. A special thanks to all the customers, We have some lovely tents that we purchased with the money you helped raise.

If your son or daughter is interested in joining the scout group please contact Sue on 01623823761 or call at the Village Hall on a Monday evening after 5pm.

Beavers: Age 6 to 8 years

Monday 5 to 6pm Village Hall

Cubs: Age 8 to 10 1/2 years

Monday 6 to 7.30pm Village Hall

Scouts: Age 10.1/2 to 14 years

Friday 6.30 to 8.30pm Church Rooms

Explorers: Age 14 to 18 years Church Rooms.

If you are interested in helping at any of the sections please call Sue on the above number.

PORTRAITS

Oil on canvas or watercolour
by local artist **Jeremy Mayes**



Visit me at

**Sherwood Forest Arts & Crafts Centre,
Edwinstowe**

jmayer@btinternet.com 07854 073784

Gas Care

Service | Installation | Repairs

Gas Care in Mansfield Woodhouse is a family run local firm that specialise in:

- Boiler Replacements & upgrades
- Power Flushing
- Same day boiler repairs
- Additional Radiators
- General plumbing
- Maintenance plans
- Landlord certificates

**24 HOUR
CALL OUT
365 DAYS A YEAR**



**OVER
25
YEARS
Experience**

f Facebook at Gascaremansfield

e: info@gascaremansfield.co.uk

w: www.gascaremansfield.co.uk

Call TODAY for a FREE

QUOTE on 01623 635635



**FREE
10 YEAR
WARRANTY
Available**

PRO-ACTIVE FITNESS CLASSES WITH JANICE

AT EDWINSTOWE VILLAGE HALL

KEEP FIT AEROBICS 9.30 -10.30 am
PILATES 10.45 -11.45 am

The Aerobics class is an up-beat session where we enjoy performing movements to music to keep us fit, mobile and challenged - physically and mentally. It also keeps those unwanted pounds at bay!

The Pilates exercises are done on a mat on the floor to develop excellent posture helping to strengthen and tone.

Pilates is particularly good for anyone suffering with back pain

For your free personal consultation or any questions please contact Janice on 07801 695782



NEW CLASSES
EVERY
MONDAY

Classes are
£4.50 each or
£8.00 for both



EDWINSTOWE AERIAL & SATELLITE SPECIALISTS

Freeview / Freesat / Sky

SINGLE POINTS TO FULL SYSTEM.
FM / DAB AERIALS
RETUNES / SET UPS / TV'S WALL MOUNTED
EXTRA TELEPHONE POINTS

FULLY QUALIFIED ENGINEER WITH
30 YEARS EXPERIENCE

10% DISCOUNT FOR OAP'S



CALL FREE ON: 0800 3345650

7 DAY SERVICE, SAME DAY IF REPORTED BEFORE 10:30AM
NO VAT TO BE SCARED ABOUT



S & E TIMBER



.SUMMER HOUSES
.DOG KENNELS
.WENDY HOUSES
.CHICKEN COOPS
.RABBIT HUTCHES

SINCE 1980

HEAVY DUTY BESPOKE
SHEDS/KENNELS
MADE TO MEASURE

. Heavy Duty
Fence Panels
. Oriental Garden
Features
. Garden Trellis

Skirting/Architrave
• Handrails • Dado Rail
• Door Casings • Shiplap

Heavy Duty
Fence Panels,
Concrete Posts
& Plinths



All Planed
and Rough Sawn
Timbers

Decking Kits
10' x 10' - £170
12' x 12' - £250

SLEEPERS!
- New & Reclaimed

Natural Sandstone Paving -
Patio Packs from £17.50sq/m

• Matchboard • Floorboards
• T & G Cladding • Loft Insulation • Beading

• Wide Range of Plywood • Chipboard
• Eliotis • Plaster Board • M.D.F.

UNIT 45, TRENT ROAD, BOUGHTON INDUSTRIAL ESTATE SOUTH
Telephone: 01623 861364

OPEN:- 8am - 5pm Mon-Fri; 8am - 3pm Saturdays

Stockists of
**PICNIC TABLES &
GARDEN BENCHES**

John Eastwood Hospice Fundraising Walks

Over the past 14 years, I along with my walking partner Michael Dickinson have walked over 50,000 miles (with training and walks) and so far have raised over £310,000. All the expenses incurred, i.e. travel, accommodation, meals etc. are paid for by Michael and myself and we take nothing out of the donations given.

We started walking following the death of my wife, Glennys. She was given such fantastic care and we as a family were given amazing support by the medical and support staff at the Hospice that it made me determined to give something back to this little gem of a local service. The Hospice relies entirely on fundraising and donations to support the NHS in its provision of specialist palliative care services and need to raise £450,000 per year to meet its many commitments.

Our next walk is Leeds to Hull on the canal path. How long we can keep this up, I'm not sure? While ever we are fit enough and able to we will continue walking and raising funds. If anyone out there feels able to give to such a worthy cause as the John Eastwood Hospice, please take a look at our JUST GIVING page:-

<https://justgiving.com> enter Brian Hawkins in the search field, or you can post a cheque to me at 22 Normanton Close, Edwinstowe, NG21 9PF, made payable to "John Eastwood Hospice".

I am personally very grateful for the support given to me & Michael over the years and I know the Hospice and its users are even more grateful.



**JOHN EASTWOOD
HOSPICE TRUST**



Community Alcohol Partnership (CAP) launches in Ollerton, Boughton and Edwinstowe

Tackling underage drinking and anti-social behaviour in the district is the focus of a new initiative as part of Newark and Sherwood District Council's Cleaner, Safer and Greener campaign.

A Community Alcohol Partnership (CAP) has been launched in Ollerton, Boughton and Edwinstowe to tackle alcohol-related harm to young people and improve the safety and quality of life for residents.

The partnership will aim to reduce the sale of alcohol to young people, advise them on the dangers of drinking and provide alcohol-free activities through youth services and local charities.

CAPs, which have been established in other parts of the UK, are made up of retailers, local authorities, police, schools, neighbourhood groups and health providers that work together with the aim of educating young people, adults, licensees and retailers.

The Ollerton, Boughton and Edwinstowe CAP will bring together a wide range of stakeholders, including Newark and Sherwood District Council, Edwinstowe Parish Council, Ollerton & Boughton Town Council, Police and Fire Services, Youth Service, Newark and Sherwood Homes, Notts Community Housing plus local supermarkets and retailers.

Evidence has suggested that education about alcohol is often a poorly taught subject among young people and CAPs promote a greater emphasis on alcohol education in both schools and other settings such as youth clubs. Across the country, CAPs have had an outstanding impact on local crime, anti-social behaviour, litter, feelings of safety and reductions in underage purchasing of alcohol.

EGMANTON PLANT HIRE

For a full list of hire equipment please see:

www.egmantonplanthire.co.uk

ANDREW BANKS

Phone/Fax: 01777 872316

Mobile: 07971 627588

VAT registered

Please see our website for current price list



Sherwood Forest Probus Club

What is that?

It is a group of people who are retired or semi retired and meets once a month for a talk, meal and a chat.

When?

11.30 am on first Thursday of the month.

Where?

South Forest Leisure Centre, Edwinstowe

What can I expect?

A wide variety of illustrated talks for all tastes, from life in music, poets and places, to Antartica visited.

With a light lunch or full meal to follow
So why not give it a try?

Colin on 01623 822 220

Just turn up or contact the Secretary

**We look forward to
meeting you!!**

Edwinstowe Village Hall

The Village Hall is continuing to prosper and be well used for many and varied activities. The Village Hall Management Committee, looks after the hall, not only the letting, but ensuring it is kept clean and in good order. The running costs are covered by the letting rents, but for other needs (i.e. new kettle, cooker, furniture, etc.) we rely heavily on grants and money raised by the Committee at coffee mornings.

Last year grants have kindly been received from numerous places and the hall has been painted inside, new cupboards installed, new door, and new curtains hung, and essential repairs to windows etc, have been carried out. The Parish Council have also received or about to receive grants for outside painting, new flooring and other building work.

The Committee and Parish Council are very grateful to all who have given grants and donations.

The next meetings are on Tuesdays the 12th March, 28th May, 23rd July, 10th September and the Annual General Meeting on 26th November.

All are welcome to attend, perhaps personally or to represent your Society, Club or the Village. Contact Mrs. P. Bamford (07594 460846) or Mr. P. Hull (01623 822148) for information.

We also have our Coffee Morning on the 16th March at 10 am.

Peter Borrowdale

P&A Masonry Services

3 Croft Farm Close,
Everton, Doncaster,
South Yorkshire, DN10 5DJ

MEMORIAL SPECIALISTS

Tel 01777 949029 . Mobile 07890589147
E-mail: peterborrowdale@yahoo.co.uk

A family business for over 110 years
Memorials-Lettering-Renovations



In what is usually a dismal month in the calendar, we had a lovely surprise in the garden, A small flock of long tailed tits (four!) feeding on the fat ball feeder. In 43 years in this garden we have never had this variety of bird in the garden before but now see them regularly. We just hope they spread the foody news to all their relatives.

We only have to see the "Fair Maids of February," (snowdrops) and our February will be complete and we can look forward to Spring.

The Choir too are looking forward and are rehearsing enthusiastically with new music and some old favourites to provide our audiences with a varied programme. We sing for all occasions; celebrations, anniversaries, fundraising and charity events. Our Secretary Pauline, on 07951609217, would be delighted to hear from you and we have dates available for booking.

Information about the Choir can be found at www.thedukeriessingers.com. We are also on Facebook, Twitter and YouTube.

We practise every Wednesday evening from 7-30pm until 9-00pm in the upstairs Theatre Foyer area at The Dukeries Academy, Ollerton. This is best accessed via the Leisure Centre entrance and car park.

Foot Care In Your Own Home

Laura Leivers MAFHP MCFHP

Mobile Foot Health Practitioner



01623 238700

- ◆ Routine Foot Care
- ◆ Fungal Nail Infections
- ◆ Corns & Callus
- ◆ Diabetic Foot Care
- ◆ Thickened Toe Nails
- ◆ Specialist Advice
- ◆ Ingrowing Toe Nails
- ◆ Gift Vouchers

Fully qualified and insured professional

www.nottsfoothealth.co.uk



Village Cricket Clubs Partnership

2019 sees the formation of a partnership between Edwinstowe and Thoresby Colliery Cricket Clubs.

The Partnership will offer closer links between the two organisations and provide extensive facilities for both senior and junior cricket.

Edwinstowe 1st XI (Bassetlaw Div 1), Thoresby Colliery 3rd XI (Bassetlaw Div 6) and Allstars Junior Cricket (Sunday am) will play at the Forest Corner ground.

Thoresby Colliery 1st XI (Bassetlaw Championship), Thoresby Colliery 2nd XI (Bassetlaw Div 2), Allstars junior cricket (Friday evening), U11 Kwik cricket, U11s, U13s and U15s hardball junior cricket at the Fourth Ave ground.

For any information regarding interest in either Junior or Senior Cricket feel free to contact the clubs secretaries.

Neil Fenwick, mob.no. 07763377455, email njfenwick123@btinternet.com

Martin Cheshire, mob.no. 07896742669, email martin@cheshire844.force9.co.uk

PETER WARD SOLICITOR

TURNER ATKINSON & WARD SOLICITORS

23, HIGH STREET EDWINSTOWE NOTTS NG21 9QP

TURNER ATKINSON & WARD OFFER
A FULL RANGE OF CONVEYANCING
SERVICES, PREPARATION OF WILLS,
AND ADVICE AS TO PROBATE

APPOINTMENTS ARE AVAILABLE AT
SHORT NOTICE AND HOME VISITS ARE
MADE UPON REQUEST

TEL 823450

FAX 823456

WE ARE AUTHORISED AND REGULATED BY THE
SOLICITORS REGULATION AUTHORITY
REGISTRATION NUMBER 101320

Ok Blinds

Affordable Stylish & Quality Blinds Made To Measure

07555618555

 Find us on
Facebook

Edwinstowe, Notts

Verticals Venetians Wooden Pleated
Romans Rollers

D.A Williams

Electrical Contractor

REWIRES, SHOWERS, INTRUDER ALARMS
SECURITY LIGHTING
& GENERAL ELECTRICAL WORK UNDERTAKEN

TEL: 01623 836517
07719999781

Thoresby Colliery Cricket Club

ANNUAL AWARDS EVENING OCTOBER 13th 2018

A full clubhouse was present for the awards evening with all the teams well represented.

The full squad of Kwik cricketers. Jayden, Alfie, Rowan, Billy, Frasier, Tom, Louis, Jack, Daniel, Thomas and Daisie received their medals. Jayden also received the batting award with Thomas the bowling award and Daniel the fielding award.

In the U11s Hardball Pairs, Aidan received the batting trophy, Ethan the bowling and Billy the managers award.

In the U13s Hardball Pairs, Jayden won the bowling award, Josh the batting trophy and Cian the managers award.

In the Senior section.

Rehan walked away with all the 1st team awards for batting, bowling and players player.

For the 2nds Chris Mitchell was awarded the bowling trophy, Nigel Birkett the batting award and Kieran Walker the players player.

For the 3rds Simon Pallant received the bowling award, Keith Searson the batting trophy and Jayden Staley received the players player trophy.

The clubs midweek team won the Newark Midweek Div 1 league and captain Jack Willis presented his squad with the trophies.

The Clubman Award was presented to Liz Walker.

The Chairmans Performance Award was won by Rehan for his outstanding achievement of 102 runs and then 8 wickets for 73 runs with the ball in a Championship game. Rehan also received an award for his first 50 for an U18 in senior cricket.

He will also be receiving the Bassetlaw Leagues Championship Bowling Award as well as the U21 Bowling Award at the Leagues Annual Dinner later in the year. Rehan is also the top all rounder of the season with 684 runs and 53 wickets to his credit.

Martin Cheshire had his Nottinghamshire Cricket Board OSCA award represented to him. Martin was nominated by the club in the "Heart and Soul" category and was originally presented to him at an award ceremony at Trent Bridge.

Martin had then been invited to attend the National Awards at Lords Cricket ground. Although not successful on the night Martins dedication to the sport and in particular Thoresby Colliery Cricket Club has done the village and local cricket leagues proud.

Rob Walker took over to present "special awards" to Phil Meadley, Keith Searson and Simon Pallant. It was then the turn of players to "face the music" for the Annual "Duck Awards."

In 3rd place Kian Staley

In 2nd place Paul Hufton

Overall winner Jack Willis.

Thanks were given to all the volunteers who had given their time during the season to support the club. In particular the tea ladies and parents who generally help out on matchdays.

Once again Bassett and Ryder sponsorship helped towards the purchase of trophies and the club thank them for their continued support.

Next season the club will again field 3 senior teams on Saturdays in the Bassetlaw District Cricket Leagues, a Sunday XI in the Mansfield District Sunday League and a team in the Newark District Mid-week league.

During the winter months the club take part in the indoor league played at Cuckney Cricket Centre.

The Junior section will continue with AllStars cricket, Kwik cricket, U11s and U13s hardball next season.



Edwinstowe celebrates the opening of new Library and Learning Centre



delivered by



On Thursday 3 January 2019, Edwinstowe Library re-opened its doors to the public following an extensive refurbishment. As a result of consultation with the local community, the library re-opened under the new title of Edwinstowe Library and Learning Centre.

As part of the consultation process, the public helped Inspire, who deliver culture, learning and libraries on behalf of Nottinghamshire County Council to decide on the following changes to the library;

- Creation of an accessible customer toilet
- Increased range and quantity of book stock
- Creation of a meeting room with refreshment making facilities
- New energy-efficient heating and lighting
- New shelving, furnishings and decoration
- An extensive programme of learning courses
- Relocation of children's library to the ground floor
- Tea and coffee available to purchase
- Revised opening hours including removal of lunchtime closures

The new library opening times are: Tues: 9.30am-6.30pm, Thurs: 9.30am-1pm, Fri 9.30am-5.30pm, Sat: 10am-1pm.

On Saturday 26 January, staff and customers officially celebrated the new library at the Opening Ceremony, where Chairman of Nottinghamshire County Council, Councillor Sue Saddington cut the ribbon and cake. Professional Storyteller, Nicky Rafferty also joined to provide a fun storytelling session for children. Inspire would like to thank everybody who came along and made it such a great event.

Peter Gaw, Chief Executive at Inspire said: "Edwinstowe follows a long list of libraries refurbished by the County Council over the last 10 years and benefits from all that we have learnt how to make our libraries fit for the needs of local communities. We are really pleased with the involvement of the local community and hope this will continue as we develop the service".



Chairman of Nottinghamshire County Council Councillor Sue Saddington opened the newly refurbished Edwinstowe library, pictured here with Councillors John Peck and John Cottee along with two young visitors to the library.



Piers the Ploughman

by William Langland



You may remember Piers the Ploughman standing proudly under the church notice board last Summer. (Yes, he did have rather a miserable face) but he was much admired and many asked about his history.

William Langland was probably born in Ledbury, Herefordshire, in about 1332. He moved to London where he made his living by singing songs at rich men's funerals and as a wandering minstrel.

This story is one of the most important pieces of writing that has survived from Medieval England. William took about 30 years to finish it.

The poem tells of a dreamer called Will, who falls to sleep in the Malvern Hills and sees a vision of 'fair field full of folk, wandering and working'. He sets out to find the character called Truth. Along the way he meets Piers the Ploughman, an honest labourer who knows the way to Truth. He asked the local community to help him plough a field but they refuse to work and they are attacked by Hunger. Piers leads Will on a new journey: to become a better person. A quest which helps him understand what it is to be a good Christian.

Ballads sung by minstrels often dealt with the problems of the poor. The most popular character in these ballads was Robin Hood.

In the Middle Ages many ballads told of outlaws who stole from the rich to give to the poor. Langland wrote:

"I cannot perfectly say the Lord's Prayer as the priest sings it. But I know rhymes of Robin Hood".

Langland grew up poor and the poem explains what life was like for ordinary individuals. Very few people cared about the poor in Medieval England and the lifestyle of peasants was harsh, though a local monastery or convent might help.



Take on your challenge of a lifetime
Beaumont House have some exciting challenges in store for 2019 for anyone who is looking to face their fears, push themselves and achieve something amazing whilst supporting their local hospice.

There's something for everyone...

Experience the incredible sport of skydiving and take part in a tandem Skydive from 13,000ft on Sunday 23rd March 2019 at Langar Airfield, Nottingham.

Take up the challenge of a 100 mile bike ride along with 30,000 others through the closed streets of London and into the Surrey Hills at Ride London on Sunday 4th August 2019.

The Newark Half Marathon takes place on Sunday 11th August... We are offering a free place and free running vest to anyone wishing to take part and fundraise for Beaumont House. Spaces are limited.

The aim is simple for TrekFest - complete your chosen distance (25km or 50k) whilst making every step count. Both routes are fully supported with experienced mountain leaders, challenge leaders, route guides and first aid. Taking place in the Peak District on Sunday 31st August 2019.

Visit one of the seven wonders of the world on the Great Wall of China Trek from 1st - 9th September 2019. The itinerary snatches the best of the Wall, ranging from original sections to restored watchtowers; it all forges its way over mountains and through valleys.

To find out more about taking part, please contact the Fundraising team on 01636 610556 or email fundraising@beaumonthouse.co.uk. Alternatively, please visit <https://www.beaumonthouse.co.uk/events>



PRESS RELEASE

Date of issue: 15/01/2019

Energy bills help from Citizens Advice

If you have been wondering whether you could save money, or you are unhappy with your energy supplier, now is the time to do something about it. If you are dreading a big bill or your energy supplier has increased your direct debit payments – Citizens Advice Sherwood & Newark could help you get a better deal.

In the three years we have been offering energy appointments, we have seen significant changes in the energy market including poor customer service from some suppliers. We have helped consumers to:

- switch to better deals and save money (in some cases hundreds of pounds a year)
- set up affordable arrangements for arrears, or have them written off if they have been unfairly applied .
- sort out problems with energy suppliers and, where unresolved, take their case to the ombudsman

We have seen some alarming cases of people being made worse off by switching suppliers based on information given by doorstep or telephone sales people. It is important to remember that sales people, or callers who are not your existing supplier and offer you a smart meter, would be switching your account over to them and that may not be the best decision for you, particularly if you qualify for the Warm Home Discount. We can help you to assert your consumer rights.

Citizens Advice Sherwood & Newark is a local advice charity and part of the national Citizens Advice network. Our service is independent, impartial, confidential and free – and we won't push you to do anything you don't want to do.

Give us a call on 01623 861769 and ask for the Energy Adviser. Appointments are held at our offices in Ollerton or Castle House, Newark. If you find it difficult to get in to see us when we are open, we may be able to find other ways to help. **Watch out for information on our special energy drop-in sessions during Citizens Advice Big Energy Saving Week from 21-24 January.**

For more information, contact Carol Jennings (caroljennings@sn-ca.org.uk)

Telephone 01623 861769 (main office) or mobile 07843 899436

Anyone requiring advice or support can get help online at www.citizensadvice.org.uk or from Citizens Advice Sherwood & Newark Open Door Advice Sessions held at:

New Ollerton: 5 Forest Court, New Ollerton, NG22 9PL

Monday & Wednesday: 9:30am – 2:30pm

Newark: Castle House, Great North Road, Newark, NG24 1BY

Tuesday & Thursday: 9:30am – 2:30pm

Telephone Advice Line: 0344-411-1444 (Monday to Friday 10am to 4pm)

Or Call Citizens Advice Consumer Helpline on: 03454 04 05 06

Or see us at Twitter: @ShwdNwkCAB

Edwinstowe Gutter Cleaning & Repair Service



Damp Problems? | Leaking Gutter Joints? | Annoying Drips?

DON'T WAIT UNTIL IT'S TOO LATE!

- ✓ FREE Gutter Inspections!
- ✓ 5★ Reviews & Top Rated!
- ✓ Hi-Reach Gutter Cleaning!
- ✓ We provide OAP Discounts & Group Discounts
- ✓ FREE Quotations!
- ✓ 8yrs+ Experience!
- ✓ 12mth Repair Guarantee!

10% Off
Using This Leaflet

Hi! I'm Martin,

With our Gutter Vac Machines,
we can safely clean gutters...

- which are heavily soiled!
- above your conservatory!
- upto 4 storeys high!
- without our feet leaving the ground!

5 STAR RATED



Read our Reviews



CALL FREE TODAY!

0800 009 64 83

www.sudell.co.uk



Find us on facebook
www.facebook.com/SudellCo

Yell.com ★★★★★
Google ★★★★★
Facebook ★★★★★



Getting ready for summer!

First of all we must say a big thank you to all our visitors who ventured through the old wooden door leading to The Echium Garden in Thoresby Park Walled Garden, in 2018. Our followers know that we always have a story to tell and love to share our passion for gardening and amazing Echium plants with anyone who will listen!

The old brick walls protecting the five acre garden certainly make for a unique micro climate with temperatures up to the dizzy heights of 40c+ last summer and 50c in the poly tunnel providing ideal conditions for our sumptuous crop of heritage varieties of melons, last grown on the site in Victorian times.

A short stroll from the car park at Thoresby Courtyard leads to our unique and well-hidden 'gardeners' delight' occupying a corner of the partially restored garden dating from the 1700s.

Visitors can view the National Plant Collection of Echium, including the Giant Tree Echium (Pininana) growing to over 14ft and endemic to the Canary Islands, as well as

established herbaceous borders displaying heritage plants grown in Victorian times.

The garden comes alive with vast numbers of bees and pollinators including the Hummingbird Hawk moth attracted to the Echium plants from early summer!

Open days Thursday, Saturday & Sundays, 10am from mid March, £3 adults, children admitted free.

Open for the National Garden Scheme on Saturday 1st June.

For more information visit our website
www.echiumworld.co.uk
 or email echiumworld@gmail.com

Happy gardening! Linda & Ray – Echium World



The Echium Garden, Thoresby Park
 Nottinghamshire NG22 9EP



Edwinstowe Parish Council

Councillors Can Be Contacted Via The Parish Council Office

Edwinstowe Parish Council

Working to make a difference

Tel: (01623) 824243

info@edwinstowe.co.uk

theclerk@edwinstowe.co.uk

www.edwinstowe.co.uk

The Parish Council is OPEN TO THE PUBLIC on

Mon..... 10.00am - 2.00pm

Tues..... 10.00am - 2.00pm

Weds..... 10.00am - 2.00pm

Thur..... 10.00am - 2.00pm

Fri..... 10.00am - 12.00pm

Clerk - **Alice Dunn**

Administrator - **Nicola Priestley**

Mark Spencer MP

Parliamentary,
House of Commons,
London, SW1A 0AA

www.markspencermpp.com
Social media: @mark_spencer

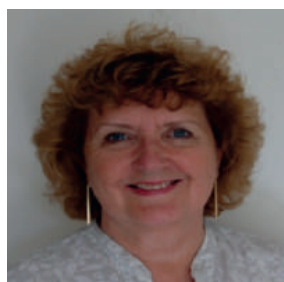
T: 020 7219 7143 / 0115 9681 186
Email: mark.spencer.mp@parliament.uk

Constituency - Sherwood Constituency Office
Room 3, under One Roof, 3A Vine Terrace,
Hucknall, Nottingham,
NG15 7HN

County Councillor John Peck,

T: 07748181719

E: cllr.john.peck@nottscc.gov.uk



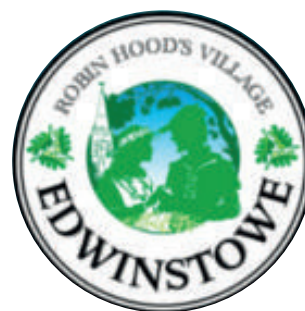
Cllr Celia Brooks
Chairman &
District Councillor



Cllr Dennis Tattersall
Vice Chairman



Cllr John Peck
& County Councillor



Cllr Chris Ayre



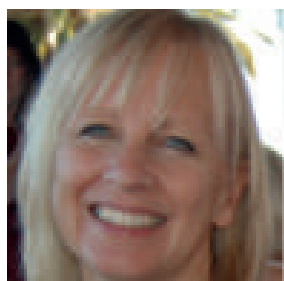
Cllr Michael Brown



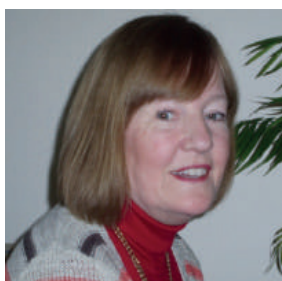
Cllr Terry McLaughlin



Cllr Paul Peacock
& District Councillor



Cllr Karen Peck



Cllr Barbara Starbrook



Cllr Alison Troop

LOCAL SERVICES & GROUPS DIRECTORY

Local (01623) number applies unless otherwise stated

IF YOU WOULD LIKE TO ADD YOUR GROUP TO OUR DIRECTORY LIST

Helpful Numbers

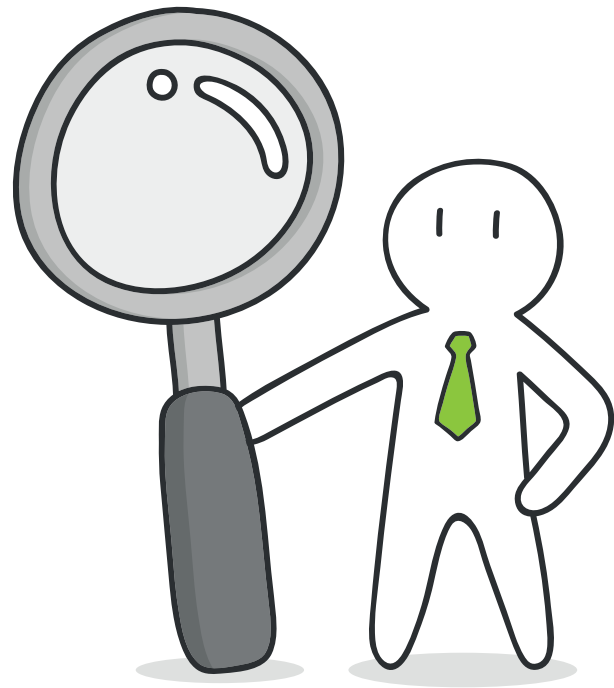
Parish Council Office - **824243**
 Newark & Sherwood District Council - **01636 650000**
 Nottinghamshire County Council - **0300 5008080**
 Citizens Advice Bureau - **0344 411 1444**
 Major Oak Medical Practice - **822303**
 Edwinstowe Library - **822280**
 Sherwood Forest Trust - **821490**
 Sherwood Forest Visitors Centre - **823202**
 The Village Hall - **07594 460846**

Please contact

The Parish Council Office on 824243
 or email: info@edwinstowe.co.uk
 / theclerk@edwinstowe.co.uk

Local Groups

Evergreen Club - **07775 902912**
 Edwinstowe Historical Society - **822264**
 Edwinstowe Hospice Support Group - **822070**
 Edwinstowe Leisure Painters - **01777 870588**
 Edwinstowe's Helping Hands - **07800 803728**
 Major Oak Pop Choir - **07450 316756**
 Dukeries Singers - **822070**
 Abbey Road Art & Craft Group - **822534**
 Royal British Legion - **824787**
 Dukeries Tai Chi Society - **822827**
 Lynds Close Luncheon Club - **07800 803728**
 Sherwood Forest Probus Club - **822256**
 Abbey Road Whist Drive - **822374**
 Edwinstowe Youth Club - **07960 481488**
 Royal Oak Court Allotment Association - roc.allotment@gmail.com
 Robin Hood Colts Football Club - **07921 250583** and **07772 908542**
 1st Edwinstowe Guides Group - **823165**
 1st Edwinstowe Beaver Scouts - **823761**
 1st Edwinstowe Brownies - **07716 818327**



1st Edwinstowe Scouts Group - **07511 363328**
 2nd Edwinstowe Brownies - **824782**

Schools

St Mary's Church Of England Primary School - **822518**
 King Edwin Primary School - **822111**
 Dukeries Academy - **860545**

Churches

St Mary's Church Office - **822430**
 St Mary's Church Rooms - **07840 435796**
 Methodist Church - **825469**

Nurseries

Bright Beginnings Day Nursery - **822440**



CONTACT The Parish Council
 on **01623 824243**
 or email: **info@edwinstowe.co.uk**
Business card sized advert - £25
1/4 page advert - £50
1/2 page advert - £75
Full page advert - £100
Inside front or back cover - full page - £200
Outside back cover / full page - £225

EDWINSTOWE VILLAGE NEWS EDITORIAL TEAM

Clr John Peck, Clr Karen Peck, Alice Dunn and Nicola Priestley

COMMENTS

Please email your comments to:

info@edwinstowe.co.uk or drop this form in at The Village Hall.

.....

.....

.....

.....

.....

.....

.....

.....

If you would like to submit an article or an advert for the next issue email us at: info@edwinstowe.co.uk



A Bright Start to 2019



Join your local business community with our office space, meeting rooms, conferencing facilities and more at **Edwinstowe House**.



We're looking forward to starting a range of **new construction projects** in 2019 with a strong order book with both new and existing customers.



Discover a new home you will love for life. Visit the show-home at our **Rufford Pastures** development in Edwinstowe or call 01623 827695.

