

Edwinstowe Village

— NEWS —

ISSUE: 25

AUTUMN 2019

www.edwinstowe.co.uk

info@edwinstowe.co.uk

01623 824243



Welcome to the Autumn edition of the Parish Magazine 'Edwinstowe Village News' produced by your Parish Council

Inside you'll find information about the newly completed Thoresby Colliery memorial garden which remembers all those who died during the course of their work at Thoresby Colliery.

Also an update on the installation of a half winding wheel at Forest Corner as a reminder of Edwinstowe's proud mining heritage.

There is also an important diary date - a reminder about the ever popular Christmas Lights switch on event.
We hope you'll be able to come along and enjoy the festivities.

[Read more...](#)



From your County Councillor, John Peck

I'm delighted the memorial to those who died during the course of their work at Thoresby Colliery has now been completed. I've been chairing the working group which has been working on the project for the past two years and it's very satisfying to see everything complete at last. Edwinstowe now has a lasting memorial which ensures the village will not forget.



I recently moved a motion at a meeting of the County Council committing it to reducing the use of single use plastics and reducing carbon emissions across all the county Council's buildings and activities. I'm pleased my proposal received support from all members and several measures have already been put in place. We all need to play our part in looking after our planet.

On another environmental issue, I also supported a proposal to commit the County Council to review the cutting verges along the highways in Nottinghamshire, to encourage more wildflowers.

I attended a conference where the County Council launched a new visitor strategy for the next ten years. Edwinstowe has been identified as being one of the key centres of tourism, as we are the gateway village to Sherwood Forest, the home of Robin Hood. I see this as an opportunity for our local businesses, for jobs and to encourage investment in our village.

I will be working hard to make sure our village benefits from any funds which are available and for village infrastructure to be improved and of course, not forgetting the campaign to get the Robin Hood Line extended to Edwinstowe!



Proposal for Sherwood Forest to become part of a new National Forest

A report commissioned by the Government proposes Sherwood Forest should be part of a new National Forest which links with Charnwood and Clipsham. The planting of more native trees in the region would form part of the Government's climate change strategy.

The report also suggests this would help protect the ancient and historic Sherwood Forest.

As we go to press, we have no further details or any indication as to whether the Government will adopt the proposal but will keep residents informed about any future developments.

Thoresby Colliery Memorial Garden

By the time you read this article, the Thoresby Colliery Memorial Garden will have been completed. The memorial stone, history board and seat will have been installed and the final planting completed. By next spring and summer, the garden will be bursting with colour with plants which will attract birds, butterflies and bees. An official opening event will take place and we will give a report on that in the next edition of the magazine. Residents are encouraged to visit the garden to view the memorial which remembers those who died during their work at the colliery. Also, please read the history board which tells the life of the colliery known as "the jewel in the crown" due to its record breaking production. The memorial garden is situated next to the Village Hall on Mansfield Road. It has brought back into use a piece of overgrown, unsightly land.

Councillor John Peck, Chairman of the working group which has been raising funds and working on the project said, "We are delighted that all our work over the past two years has resulted in this permanent memorial. I would like to thank the members of the working group for seeing the project through and all those people who made generous contributions to the fund. Including the County Council who contributed £12,000 from their local improvement scheme."

Councillor Paul Peacock, a member of the working group and who formerly worked at Thoresby said, "It's important Edwinstowe remembers our proud mining history but also doesn't forget not only all those who worked at the pit but those who sadly lost their lives or were injured in the course of working there."



What's happening to the bowling green?

Residents often ask this question so here's an update on what's happening down on Fourth Avenue. If you've been down Fourth Avenue recently, you will have seen the housing being built on the site of the former Welfare, the car park and the original children's play area. When the owner of the Welfare and the bowling greens, CISWO (the Coal Industry Social Welfare Organisation) demolished the Welfare and decided to sell the land to a developer, the Parish Council negotiated to lease one of the bowling greens which was not in use, to create a new children's play area. The first phase was completed some time ago, with the intention of adding more play equipment over the next year or two. Initially, the bowls club carried on their bowling green which the Parish Council had leased to them.

However, sadly they were unable to continue due to falling membership and returned the green to the Parish Council. Parish Council Chair, Councillor Celia Brooks said, "We are expecting substantial funds from a planned housing development in the village and within the next couple of years we intend to join the bowling green with the play area to create a small attractive park for Fourth Avenue and other village residents. It will be landscaped with trees and flower beds, seating and we will also be installing additional children's play equipment."

The Parish Council has a parks and open spaces committee which is working on the project. In recent years the Parish Council created Jubilee Park with the skate park and children's play area and future projects include opening up the land next to the bridge on the High Street as a wetland area and riverside walk.

New 150 place camping and caravan site proposed at Sherwood Pines

Forestry Holdings intend to create a 150 place camping and caravan site at Sherwood pines to add to the 65 lodges which were built there a few years ago. This is good news for the area as tourism and the visitor economy become increasingly important to the area, giving a boost to jobs and local businesses.

Edwinstowe's County Councillor John Peck said, "This is good news for our local economy. The County Council's new tourism strategy places Edwinstowe at the heart of the strategy as a tourism hub; the gateway village to Sherwood Forest and the other visitor attractions in the area. Visitors who stay in the area for weekends or a few days spend more money in the local economy which helps sustain local traders and businesses and creates jobs.

Unlike visitors to Center Parcs (which is nevertheless a big local employer) visitors who stay in B and Bs, caravan and camping sites or holiday cottages, do explore the local area and spend money in the local economy."

The summer High Street flower display

This summer past, Edwinstowe High Street looked at its most attractive with its flower displays. The Parish Council has made a big effort in recent years to improve the appearance of the High Street, by purchasing several flower tubs, painting all the street furniture and hanging banners from the lamp posts. Traders contribute by displaying hanging baskets which Parish Council staff maintain. Parish Council Chair, Councillor Celia Brooks said, "We're very proud of our High Street and many visitors remark how lovely our High Street is. One gentleman from Leicester emailed one of our councillors to say he is a regular visitor and praised the appearance of the village and especially the High Street where he likes to stop for refreshments." Celia paid tribute to the parish council amenity staff who plant and maintain the flower displays each year and thanked the traders for their support in displaying hanging baskets.



Proposal to extend the village conservation area

Earlier this year, the Parish Council asked Newark and Sherwood District Council to consider extending Edwinstowe's conservation area. This presently takes in Church Street, part of the High Street to the end of the shops and the sides of West Lane and East Lane nearest to the High Street. A public consultation was held recently about the proposal to extend the conservation area to take in other important and historic buildings including the railway station and Dukeries Hotel. The purpose of the conservation area gives additional protection to important historical areas and buildings in the village which give Edwinstowe its distinct character. In the 1960s and 1970s for example, a number of buildings were lost or altered in an inappropriate way. Whilst the clock can't be turned back, we can protect what we have for future generations.

Parish Council Chair, Councillor Celia Brooks said, "The Parish Council requested an extension of the village conservation area because Edwinstowe is a historical village with a distinct character. With all the future development taking place, we want to ensure that we protect the historic centre of the village. There are rules which must be adhered to regarding conservation areas and the parish and district councils will make sure these are followed. Many visitors comment favourably about our village and we intend to make sure it remains a place to be proud of."

Holiday Cabins planned for Edwinstowe

A planning application has been submitted to Newark and Sherwood District Council to build 86 luxury log holiday cabins on the land off Vexation Lane (Just before the entrance to Center Parcs on the other side of Ruffoord Road).

The land presently has planning permission for a garden centre but this proposal would be a change of use. The plans have been submitted by the owner of the site, Mr S.R. Bowring. If the plans are approved and the proposal goes ahead, it is suggested the project would involve a £20million investment and create up to 50 jobs.

A forest setting would be created, with a lake. Residents who wish to comment on the proposals should contact Newark and Sherwood District Council.

Edwinstowe has long been a centre of tourism as the gateway village to Sherwood Forest. Tourism is becoming an important part of the local economy as more holiday accommodation is created in addition to the long established Center Parcs, an important local employer.

There are 65 holiday cabins in nearby Sherwood Pines and a proposed 150 site camping and caravan park, also at Sherwood Pines. Nottinghamshire County Council has recently adopted a strategy for the visitor economy in the County which places Edwinstowe, Sherwood Forest and the Robin Hood legend at the heart of its plans.

County Councillor John Peck backs the development of tourism in the area to create jobs and support local businesses but cautions that increased visitors mean increased traffic and wants this to be properly managed with road, pavement and parking improvements, speeding properly enforced and the completion of Ollerton Roundabout improvements at the earliest possible time. Also the extension of the Robin Hood Railway Line through Edwinstowe, better bus services and cycle routes.

He says: "More visitors and more house building in the area mean we need infrastructure improvements to match."

Where have the half winding wheels gone?

It's OK- they haven't been stolen. The half winding wheels which sat proudly outside the colliery entrance for so many years have been dismantled and taken away to a workshop. The Parish Council has negotiated with the developer, Harworth Estates for one of the half winding wheels to be refurbished and erected as a permanent memorial at a site on Forest Corner.

Councillor Paul Peacock said, "Some residents have been concerned and wondering where the winding wheels have gone, but they are to be restored and once planning permission has gone through, one will be erected as a memorial, which the Parish Council have negotiated with the developer as part of the community contribution. We will also be maintaining it."

The Parish Council has been assured by the developer that another of the winding wheels will be eventually sited somewhere on the new housing development.

An American mining memorial

Parish Councillors John and Karen Peck were on holiday in the USA this summer when they spotted a statue of a miner in a place called Louisville, Colorado. The mine has long since closed but like Edwinstowe, Louisville still pays tribute to its mining history and the fine bronze statue of a miner stands proudly outside the town hall.



Local MP Mark Spencer

We've recently has some great news from Edwinstowe's local Councillors, Councillor Michael Brown and Scott Carlton about their petition to secure a CCTV camera for Edwinstowe High Street.



After starting their petition earlier this year following a break-in on the High Street, a huge number of local residents signed it and voiced their support. Both Michael and Scott have been pushing hard for this, and as a result, a CCTV camera has now been secured for Edwinstowe High Street.

This is really positive news for the high street, and I know it will be welcomed by local residents, shoppers and shop owners alike. Well done to Michael and Scott for starting their petition, and thank you to everyone that has both signed and supported this campaign to get CCTV installed.

If you want to keep to date with what I'm up to in and around Edwinstowe as the local MP, then you can either 'like' my page on Facebook and follow my updates on their, or you can alwys sign up to my email newsletter at www.markspencer.org.uk.

As always, if you need to contact me you can email me at mark.spencer.mp@parliament.uk or ring my office on 0115 968 1186

From Celia Brooks Chair of the Parish Council

Welcome to the Autumn 2019 edition of Edwinstowe Village News. This was an election year for your Parish Council and details of the Councillors elected can be found in the magazine.

There are also three new members of staff, two in the office and a senior amenity worker, Duncan. The Parish office is open to the public from 10a.m. to 2p.m. Monday to Friday. James, the Clerk and Beverley, the administrative assistant are happy to help you and answer your queries as far as is possible.

Two significant dates for your calendar are Remembrance Sunday, November 10th and the Christmas Fair on November 28th.

The Remembrance parade will be starting from a different part of the village this year. Details, once finalised by the British Legion, will be posted on the Parish Council website.

Similarly, news about the Christmas Fair arrangements, will also be found on the website.

Please enjoy reading our Magazine and remember local news items for future editions are always welcome.

Please contact the Parish office if you are interested.
Celia Brooks
Chair, Parish Council

Amenity Diary

Edwinstowe Parish Councils Amenity Team have been busy maintaining and improving facilities for residents. This Summer Hanging baskets have been blooming well into September as they are watered six days a week. The team installed benches on Ollerton Road and at the new Thoresby Memorial Garden.

They also replaced and installed new dog bins on Rufford and Mansfield Road.



Get involved with Edwinstowe Parish Council's Save a Plant Scheme

Get involved with Edwinstowe Parish Council's Save a Plant Scheme

Edwinstowe Parish Council would like your unwanted potted trees, shrubs and perennial flowers.

Please drop them off, at the Council Chambers, Village Hall between 10am-2pm Monday – Friday and the Amenity Team will gladly plant them in open spaces within the village.

New plants will provide additional nectar sources for pollinators, increase conservation and add to the attractiveness of the village. For bare rooted plants, please call the Parish Council beforehand with prior notice as these will need planting immediately.



Take the right direction with expert financial advice



We provide a comprehensive wealth management service, offering specialist face-to-face advice tailored to you. Our services include:

- Investment Planning
- Retirement Planning
- Inheritance Tax Planning
- Intergenerational Planning

For further details please contact **Rachel Bayliss** on:

Bayliss Wealth Management

Tel: 01909 512540 | Mob: 07962 111949

Email: rachel.bayliss@sjpp.co.uk | www.baylisswealthmanagement.co.uk

Royal Oak Allotment Association

Over the summer residents and businesses took part in our scarecrow festival this was held during National Allotment Week and The Robin Hood Festival. Thank you to everyone who joined in this year. It's been great to see imaginative things people have come up with, a trail was available for people to follow on our Facebook page @rocallotments.

The contest was judged by Phil Gomersall BEM President of the National Allotment Association, here are the winners and what Phil had to say about them.

1st Place. Robin Hood and Maid Marion having a piggy back ride. Nice bit of humour and identifiable.

2nd Place. Cherubs Charlie Bear. It is very simplistic but cleverly done (especially the face) and a lovely expression achieved.

3rd Place. Dolly the Cowgirl. Not keen on the pink hat but the rest is quite realistic and a nice scene.

Prizes were awarded to the winners and presented by The Royal Oak Court Allotment Associations Chairman Adam Murphy.

Allotment News

The Parish Council has two sets of allotments. The largest is off Ollerton Road and a smaller area is off Boy Lane. There are currently vacant allotments on both sites.

The Ollerton Road site has water stand pipes, the Boy Lane site is situated alongside the river Maun. The usual size of an allotment is around 250 sq.yards. However the Parish Council feel that, whilst some people may be interested in an allotment, this is rather too large. It is hoped that, over the winter, smaller plots will be marked out for letting. These will be roughly half that size, measuring approximately 12yds by 10yds. Initially they will only be available at the Ollerton Road site.

If you feel that you would be interested in a smaller plot please get in touch with the office by phone or email, or of course please call in. You must be an Edwinstowe resident to automatically qualify for an allotment.

James the Clerk or Beverley, the Administrator will be pleased to help you.

Email: info@edwinstowe.co.uk / Phone: 01623 823098



Christmas at Lifespring



Lifespring Church and Centre
Sherwood Drive
New Ollerton
NG22 9PP

Switch on of Christmas Lights

Friday 29th November
 Cafe open: 4.00pm to 8.00pm
 Stalls available: £7.50

Christmas Nativity

Sunday 15th December
 10.30am

Christmas Giveaway And Carol Service

Sunday 22nd December
 10.30am

Christmas Day Service and Dinner

Wednesday 25th December
 Church Service: 10.00am
 Christmas Dinner: 12.30pm
 (Booking essential)



Edwinstowe & Dukeries Lions Have Pride

We The Edwinstowe & Dukeries Lions are a small band of people who are proud so here is just some of the fund raising activities and contributions we have made to our local community.

Updates since our last article we are proud to announce the total raised for the MARIE CURIE foundation £2456.97. A fantastic amount over a short period. We look forward to next Easter fund raising.

June saw us at South Forest Leisure Centre Edwinstowe for our annual Lions Race Night. This was a very successful evening with fun and fund raising going together.

July Armed Forces day in Edwinstowe saw us do a hamper raffle and name the bear.
August saw us at a charity day at Springwater Golf club which was held for NOTTINGHAM CHILDREN'S HOSPITAL charity 'THE BIG APPEAL', They are hoping to raise £4 million over four years, for a new state-of-the-art MRI scanner. The Edwinstowe LIONS sponsored two holes.

September was our annual quiz night which was very successful with 50% profits to the Lions 25% profits to the Brain Tumour Research and 25% to the winner's choice of charity.

October we welcomed local Scouts whom we helped to go to the World Scout Jamboree. They came to Thank the LIONS for our help which helped them achieve their goal. It was humbling to listen to these young adults explain their time spent at the Jamboree and they are a credit to the community.

We have now been approached by 3 locally chosen Scouts to go to the European Jamboree in Gdansk in Poland in the summer of 2020. After listening to their proposed venture which they also have to raise over £1000 each we decided to help them although they are still doing lots more fund raising to get them to their target.
This above is just a small part of what the EDWINSTOWE LIONS are and have been doing and WELL DONE you small group of lions in the Edwinstowe and Dukeries District.

Soon we will be inviting Santa to attend the Christmas lights switch on in Edwinstowe so come and see us and say hello to us and of course Santa.

Also Santa has agreed to join us on our sleigh pull in Edwinstowe week beginning December 16th. So if we knock on your door please be generous. If you could spare a few hours Santa always needs helpers so please get in touch.

Look for us at Tesco Ollerton with Santa on the Sunday 8th & 15th December.

If YOU think you could help in the community by becoming a LION please contact Diane & Jon 07581-265531 for further details.

Being a Lion is Rewarding.



Edwinstowe Remembrance Service and Parade

Plans for the Remembrance Sunday 2019 event are now well underway. This year we will follow the very successful format of the past two years, with just one change. Because of the significant building work now underway on the site of the former Manvers Arms PH, we have moved the start and finish point for the march to the road leading to the skate park at Friars Park. Groups or individuals who wish to join the march from Friars Park to St Mary's church are warmly invited to do so, and should gather at the skate park no later than 9.15am on Sunday 10th November 2019.

From there we will march to join the church service that will start promptly at 10am. Following the church service the parade will re-form for the short march to the memorial gardens where we will observe the 11am 2-minute silence with the nation, before marching back to the start point via west lane and Mansfield Road.

Last year was a very special year when we commemorated the centenary of the end of WW I. The Royal British Legion believes every year offers that special occasion when we can spend some time thinking of those who gave their lives for continued peace and freedom. If you don't plan on attending the church service, you are welcome to join us at the memorial gardens for the final stage of the commemoration. In that case, please ensure that you are in place at the Edwinstowe cross-roads no later than 10.50am. We very much look forward to seeing you there.

Phil Jones
RBL Edwinstowe



10th November 2019
LIVE ON
TO THE MEMORY OF THE FALLEN
AND THE FUTURE OF THE LIVING



AW Safety Management growth and welcome new addition to the team

As AW Safety Management Ltd rapidly approach our 10th Anniversary and look forward to the future it is important to reflect on the recent achievements attained.

On 14th December 2009 Adam Wade -Managing Director - took the plunge to start his own Health and Safety Consultancy. Now a 9-person strong team with plans for further growth very soon. AW Safety are always keen to add talent and expertise to the team, with 6 of the 9 employees all working and living here in Edwinstowe, we are in a fortunate position to promote local jobs in support of our local economy.



With the expansion of our services in addition to H&S Consultancy and Training, we have diversified into providing Portable Appliance Testing, PPE and Fire extinguisher servicing all of which were recently added to our repertoire.

With a firm belief in giving opportunities to young people within the community, AW Safety took the decision to recruit an apprentice to further strengthen its team. As such we would like to welcome Beth Cresswell the latest addition to the AW Safety family who joins us as our first Apprentice Business Development Executive.

We are really excited to welcome Beth into the close-knit team of professionals and introduce her to you. Beth will be have account management responsibilities and be promoting our long list of training and E-learning online courses to those existing and potential customers.

Please feel free to have a chat with Beth about training, E-learning or any of our services which have helped service hundreds of long-standing customers over the last 10 years with many more to come.

Pictured above left to right: Richard Kinnard, Beth Cresswell and Adam Wade - AWSM MD
Article written by Richard Kinnard - Business Development Manager - AW Safety Management LTD

Couch to 5k Glow Run

Two friends who were looking for their first 5k challenge are among the latest people to sign up for the Beaumont House Fright The Night.

Kathy Horsfall of Southwell and Elaine Smith from Yorkshire met while they were on holiday in the Maldives in 2007. They have kept in touch and visit each other on a regular basis.

They've just completed the Couch to 5k Challenge and are now ready to do a proper 5k run.

"The Beaumont House event is perfect as we've been involved with fundraising for the hospice in the past – Kathy and I were Abba at the Christmas party organised by Southwell Lions," said Elaine.

"We're planning to run the whole distance," said Elaine. "We're looking forward to crossing the line and dreading running out of steam as we are determined to run it all."

Fright the Night will be held at Newark Showground on October 30. Registration and Hallowe'en party starts at 4pm with the 5k starting at 7pm.

Cathy Lowe, Fundraising and Marketing Manager said, "Hallowe'en activities are becoming increasingly popular in this country and we wanted to do something which captured the imagination and tied in with the enthusiasm for dressing up at Hallowe'en. We're planning some fantastic stations and runners can look forward to foam, critters and generally ghoulish activities.

There will be flash sale coming up shortly which will be publicised on the Beaumont House Facebook page www.facebook.com/beaumonthouse/

To sign up visit www.beaumonthouse.co.uk/fright-the-night or call 01636 610556.



★★★★★
"Great food, super value"
Via TripAdvisor

★★★★★
"Nice, warm & very clean...
would stay again"
Via TripAdvisor

★★★★★
"Beautiful Sunday dinner"
Via TripAdvisor

★★★★★
"Wish it was my local"
Via TripAdvisor

★★★★★
"Excellent service"
Via TripAdvisor

★★★★★
"Ideal location...good quality & value"
Via TripAdvisor

★★★★★
"Couldn't do enough for you"
Via TripAdvisor

★★★★★
"Lovely big, open, clean pub"
Via TripAdvisor

Dukeries LODGE

Great value at the Dukeries Lodge!
Choose from 14 classic dishes

2 MEALS FOR £10

Monday to Thursday 12noon - 9.00pm
Friday & Saturday 12noon - 6.30pm
Sunday 12noon - 8.00pm

01623 822553

www.thedukerieslodge.co.uk

High Street | Edwinstowe | Mansfield | NG21 9HS

Robin Hood Festival 2019

The 35th Robin Hood Festival was a great success this year – and the team at Sherwood Forest would like to say a huge thank you to everyone in Edwinstowe who came along and supported us .

Around 35,000 people visited over the course of the week, which was amazing, especially considering there were two particularly poor weather days on the Friday and Saturday! Our visitors even braved the wind and rain, and a particular highlight was seeing so many smiling people crammed under the visitor centre roof to watch an impromptu performance by some of the musicians whilst the rain came down on Saturday lunchtime!

There was still lots and lots of sunshine too, thankfully, and the return of jousting, courtesy of the festival's new equestrian stunt team, Cavalry of Heroes, was really well received. Our regular performers and traders went down a treat as usual and, with the addition of our Activity Zone offering lots to do along the whole festival trail, everyone was kept busy and entertained.

Work is now under way to set a date for next year's event. If you have a business in the village and want to find out more about how to get more involved in the festival – whether that's advertising in the festival programme, having a stall at the event or perhaps an advertising banner on the event field, please get in touch.

There are special rates for Edwinstowe businesses as we feel that it is important that our whole community feels the benefit of one of the biggest summer events in Nottinghamshire. Please email sherwoodforest@rspb.org.uk to register an interest or find out more.

Keep up to date with what's happening at Sherwood at www.visitsherwood.co.uk



Council provides grants to improve home heating



Newark & Sherwood District Council currently has grant funding available to help local residents on low incomes to repair or replace inadequate heating systems.

If you or someone you know is on a low income and suffering with a long term health condition made worse by living in a cold home, the council may be able to help thanks to the Warm Homes on Prescription scheme.

Last year Newark & Sherwood District Council supported more than 30 home owners (and two tenants renting from private landlords), to make their home warmer, potentially avoiding unnecessary hospital admissions due to cold-related illnesses.

A Newark resident who recently benefitted from the scheme said:

"I suffer with mobility problems so spend a lot of time at home and feel the cold. My old back boiler broke down just before Christmas. I couldn't afford to repair or replace it and I was getting a bit depressed with the situation so phoned the Council – they were brilliant. I've now got a new gas boiler and my home is toasty and warm again!"

If you would like to know more about the Warm Homes on Prescription scheme, contact Newark & Sherwood District Council on 01636 650000.

For further information contact Newark & Sherwood District Council on 01636 650000 and ask for Winter Homes on prescription. Alternatively email winterwarmth@nsdc.info with your details or fill in the online application form on Newark & Sherwood District Council website.



Edwinstowe Leisure Painters

The Edwinstowe Leisure Painters Group meet-up on Monday afternoons at 2.00-4.00.p.m, mostly in the school term times.

We are a lively and happy group who welcome from absolute beginners to the most able.

We have a annual exhibition in May each year and usually organise a museum/gallery visit.

Expect friendly help and advice from group artist Graham and some refreshment tea and biscuits.

We always welcome new members. Class fees from October are £5.00/class.

Drawing and painting help and advice and the occasional demo are given by artist Graham Laughton. Edwinstowe Village Hall is a wonderful light ,warm and spacious place to work in.

Do come and join us. Contact Graham tel, 01777472885 or mobile 07999528397



Edwinstowe High Street Christmas Event

Gifts

Music

Santa

Food

Rides

Thursday 28th November 2019
4.30-7pm

Christmas market, crafts and games

Visit Santa in his grotto



Christmas music and songs by local bands and choirs

Rides and stalls and Christmas fun for all



Organised by Edwinstowe Parish Council

Major Oak Medical Practice

Patient Participation Group

On two Saturday mornings in June and September volunteers from the Mansfield Community First Responders (CFRs) gave talks and demonstrations to patients at the surgery on basic lifesaving. The CFRs are usually the first medically trained people with the relevant equipment to attend to someone who has collapsed, they start vital treatment until Paramedics and ambulance crews arrive. Several patients volunteered to try cardiopulmonary resuscitation (CPR) using dummies. The CFRs spoke of the importance of defibrillators sited in communities as they can be vital when someone has suffered a cardiac arrest. Questions were asked and praise given by patients to the CFRs and the PPG for organising the events which people said were very informative and gave them more confidence to know what is needed if they happen to be first on the scene when someone has lost consciousness. It is planned for the CFRs to also attend falls in the future.

CFRs are in schemes founded and run by volunteers who give up their spare time to attend emergency calls in their community and to raise funds to run the scheme. They are dispatched by the EMAS Emergency Operations Centre. Some of the CFRs plan to attend the Christmas Lights Event in Edwinstowe on 28th November where they hope to raise funds to aid their work.

Members of the PPG have attended Saturday morning flu jab clinics to provide patients with refreshments enabling them to sit and enjoy a drink and catch up with friends.

The Friends of Thynghowe

The Friends of Thynghowe new season of events starts with our AGM on Thursday 24th October at 7:30pm in the Fitzherbert Room of the Warsop Parish Centre. Everybody is welcome to come along and catch up with our latest news and to hear about research into the past of Thynghowe, a Viking Age site on the borders of Warsop, Budby and Edwinstowe where 'Thing' assemblies would have been held by the Danish Vikings who settled in the area. We will also announce our programme of events for the next few months.

These events will be based around the western part of Birklands Forest between Edwinstowe and Warsop. Expect the programme to include surveying sessions investigating the heritage of the woodlands, guided walks and conservation activities managing the forest vegetation. As usual our programme will culminate in our annual perambulation to Thynghowe in April and the Viking Spring Thing re-enactment at Sherwood Pines in early May.

Details of all these events can be viewed online at fotevents.wordpress.com. Everybody is welcome to join in our activities and share in the enjoyment of this remarkable historic woodland.



Gas Care

Service | Installation | Repairs

Gas Care in Mansfield Woodhouse is a family run local firm that specialise in:

- Boiler Replacements & upgrades
- Power Flushing
- Same day boiler repairs
- Additional Radiators
- General plumbing
- Maintenance plans
- Landlord certificates

**24 HOUR
CALL OUT
365 DAYS A YEAR**



**OVER
25
YEARS
Experience**

f Facebook at Gascaremansfield

e: info@gascaremansfield.co.uk

w: www.gascaremansfield.co.uk

Call TODAY for a FREE
QUOTE on **01623 635635**

**FREE
10 YEAR
WARRANTY
Available**





ARE YOU READY FOR WINTER?

STOCKISTS OF SMOKELESS FUEL, HOUSE COAL & LOGS

ALSO ROCK SALT READY FOR THE COLDER AND ICY WINTER MONTHS



WE ALSO STOCK: Blocks, Bricks, Cement, Aggregates, Plasters & Boards, Lintels, Roofing Materials, UPVC Fascia's, All Sheet Materials including Plywood, MDF etc, Studding, Skirting, Door Frames, R.S.T, P.S.E.

EVERYTHING YOU NEED: Our ranges are plumbing and electrical fittings, building additives & adhesives such as silicone, no nails & sealants. Screws, nails and fixings, tools, paints, stains and varnish, PPE & work wear.

WE ARE VERY COMPETITIVELY PRICED & OFFER ADVICE & ESTIMATES FREE OF CHARGE!



For More Details Please Call **01623 861735**

ROAD C | BOUGHTON IND. EST | BOUGHTON | NEWARK | NOTTS | NG22 9LD

e:sales@keybuildingsupplies.com | www.keybuildingsupplies.com

Brick cutting service and brick slips: www.keybrickcutting.com

A Big Thank You

A Big Thank You To Adam Smith and Edwinstowe Co-op

On Thursday 20th June Lynd's Close Luncheon Club went on their annual seaside trip to Skegness. This year Adam Smith and Edwinstowe Co-op raised the money to pay for the coach which was absolutely amazing. Coopers Travel arrived at Lynd's Close at 8.30am and Ian the driver did a great job in safely boarding the passengers.

We invited three residents from the nursing home and they were accompanied by their carers for their day out. We all had a very pleasant day in Skegness and although we had a few spots of rain it didn't dampen our spirits. Each Diner received £10 to buy a lunch of their choice many choosing good old fish and chips. Once again thank you Adam and the staff and customers of Edwinstowe Co-op for their generosity.

Report provided by Dawn Morgan - Treasurer



Thoresby Colliery Cricket Club 2019

Now the 2019 season has come to an end, Thoresby Colliery Cricket Club reviews the season.

The Juniors had an extensive season, U11's Kwik cricketers competed in games against Welbeck, Clumber Park and Milton. With the inclusion of the Allstars players 2 teams of 8 players took part. With most of the players being included U9 they then continued playing in the U9 events against Welbeck, Blyth, Farnsfield, Retford, Ordsall Bridon, Blidworth, Cuckney and Edwinstowe. Following that 4 softball players moved into the Junior hardball format playing both for U11's and U13's. Facing teams above their age the U11's achieved runners-up in their League with the U13's finishing in a credible mid table position.

The Senior 1st XI had a mixed season mainly due to not maintaining a settled side due to players not being available 100% of the time. The highlight of their season coming runners-up in the Bassetlaw League T20 competition.

Player availability had a knock-on effect on the 2nd and 3rd XI's. The 2nds had a better season than the last finishing in a mid table position. The 3rds playing their home games at Edwinstowe CC had a difficult season with an inexperienced side but was pleasing to see the youngsters in the side developing and improving their game.

The Sunday XI playing in the Mansfield District Sunday League Premier Division held their own and maintained their status for next season.

The Midweek team playing in the Newark District Midweek League were very competitive although some fixtures were weather affected.

The club's Presentation Evening will be held on Saturday 12th October, with a report to be published in the next issue.

Foot Care In Your Own Home

Laura Leivers MAFHP MCFHP

Mobile Foot Health Practitioner



07540 798 161

- ◆ Routine Foot Care
- ◆ Fungal Nail Infections
- ◆ Corns & Callus
- ◆ Diabetic Foot Care
- ◆ Thickened Toe Nails
- ◆ Foot Pain
- ◆ Ingrowing Toe Nails
- ◆ Specialist Advice

Fully qualified and insured professional

15% OFF

Your First Treatment

www.nottsfoothealth.co.uk

1st Edwinstowe Scout Group

We have had a very busy year in the Scout group and a busy year ahead. Since starting back in September scouts have already had a Scout camp at Redwood camp at Thoresby, Explorers have slept in cardboard boxes and been on a night hike. They have also been to London for the day going around all the museums.

Cubs have had a hike from Ollerton through the forest back to the village hall to gain their hiking and map readers badge They have also spent an evening at Thoresby pitching tents. They have a trip to the observatory planned. Beavers have had a good start they have invested 5 beavers and have 3 new starters. They have a sleepover planned for October with lots of fun things to do including baking. They will be digging up the potatoes that they planted in the spring for their lunch on the Saturday.

The group have a few joint events planned for the rest of the year, they are having a bonfire party on 11th Nov, a trip to Birmingham NEC to Brick Live and a Christmas party at South Forest. They will also be attending the Remembrance Day parade and displaying their poppy sculpture.

The Scout Group would like to say big congratulations to Akela (Tee) who has been awarded the County Oak Award for Mansfield District Scouts by the County Commissioner. Akela is a member of the district team and has taken over the role of training officer for the district and has done a fantastic job in helping leaders with their training needs. Well done Akela.

Please contact Sue if you have a child interested in joining the group or if you are interested in helping.

Need an Electrician?

- No job too small
- D.B.S. enhanced checked (for your added safety)
- Reliable & friendly
- Workplace left clean & tidy
- All work carried out to current BS:7671 Regulations

24hr CALL OUT Available

All Work FULLY INSURED

Call Now for a FREE QUOTATION

Atkinson Electrical Services

01623 888477 or 07732 932596

e: info@atkinsonelectricalservices.co.uk
www.atkinsonelectricalservices.co.uk

1st Edwinstowe Guides

Starting back at Guides we will be doing lots of activities from the new programme the Guides like to get involved with the planning and last term we did many things from cooking, trying to make stretchers like wartime guides did, learning how to increase chances of survival in freak weather events and party planning. Not to mention we did lots of taste testing of biscuits.

In October some of the girls will be joining others from the division to go to the Big Gig an amazing gig only for Girl guiding. Hopefully we will have as much fun as last year when we danced to HRVY, The Hope Club and Rae Morris among others.

If you know any girl aged 10-14 that would like to join Edwinstowe Guides go to the Girl Guiding website and click on join us.

UNDER NEW MANAGEMENT

YUMSING

PROVIDING FRESHLY PREPARED QUALITY CANTONESE FOOD TO TAKE AWAY

1 HIGH STREET, EDWINSTOWE, NOTTINGHAMSHIRE, NG21 9QP

TELEPHONE

01623 822118

Green Working Group

Over the last few weeks the parish has formed a working group aimed at promoting environmentally friendly ways of working. We hope to support the community to become a greener more sustainable village.

We have begun by looking at how we can make changes within the office -e.g.

- Recycling more effectively
 - Reducing waste by sending more information in a digital format
 - Ensuring electrical appliances are turned off when not in use and heating used on it's most energy efficient setting
- We are also working with our amenities team and will be trialing electrical tools as and when the petrol ones need replacing.

We have also engaged with local schools (King Edwin and St Mary's) who have started recycling initiatives.

We plan to get more information on how local shops and businesses are becoming more environmentally conscious. Both local butchers in our village are happy for customers to bring in clean, reusable containers to put their products in.

We are also beginning to engage with residents who are involved with environmentally friendly schemes so we can help support and promote these.

We are keen to have your ideas and plan to continue a regular section in the Parish Magazine to promote these-please let us know!

In the meantime the working group will continue to meet on a regular basis to move forward manageable change that will hopefully begin to make a real difference.

Community comes to the rescue at KEPS

After vandals damaged parts of the schools Forest School area during the summer holidays, a huge clean-up operation took place on Friday 20th September with over 30 members of the community rushing to the rescue.

With extremely generous donations from Robinsons & Sons Timber Ltd, Sharpline Decorators, MKM Building Supplies, Johnstone Paints and Key Biding Supplies in Boughton, the event was a huge success. Tonnes of bark and mulch was distributed, fences repaired, raised beds and sheds painted and much more...

Headteacher. Mr Callaghan-Wetton expressed his thanks to the suppliers and the community spirit evident on the day stating, "We are so fortunate to have such support from our friends within this wonderful community, the children are so grateful for what they have here at KEPS and they very much appreciate how our community supports the development of their learning experiences".

The new Forest School area at KEPS is available for community groups to use and KEPS very much wants to share their facilities with the community. Already, there are plans for further development of school facilities in the springtime and it is wonderful to see such a positive relationship between the people of Edwinstowe across all generations.





S & E TIMBER



- .SUMMER HOUSES
- .DOG KENNELS
- .WENDY HOUSES
- .CHICKEN COOPS
- .RABBIT HUTCHES

SINCE 1980

**HEAVY DUTY BESPOKE
SHEDS/KENNELS
MADE TO MEASURE**

- . Heavy Duty Fence Panels
- . Oriental Garden Features
- . Garden Trellis

Skirting/Architrave

- Handrails • Dado Rail
- Door Casings • Shiplap

Heavy Duty Fence Panels, Concrete Posts & Plinths



All Planed and Rough Sawn Timbers

SLEEPERS!

– New & Reclaimed

Natural Sandstone Paving –
Patio Packs from £17.50sq/m

Decking Kits
10' x 10' – £170
12' x 12' – £250

- Matchboard • Floorboards
- T & G Cladding • Loft Insulation • Beading

- Wide Range of Plywood • Chipboard
- Eliotis • Plaster Board • M.D.F.

UNIT 45, TRENT ROAD, BOUGHTON INDUSTRIAL ESTATE SOUTH
Telephone: 01623 861364
OPEN:- 8am – 5pm Mon-Fri; 8am – 3pm Saturdays

**Stockists of
PICNIC TABLES &
GARDEN BENCHES**

Edwinstowe Village Hall

The Village Hall continues to thrive and is almost fully booked on a regular daily/monthly basis by numerous village groups (including "Little Oaks", Art Class, Beavers/Cubs, Cards and Crafts, Womens Institute, Tia Chi, and many others,) and also the Hall is used for childrens and adult parties.

The Committee work hard to keep the Hall and facilities in good order (for example yearly floor cleaning and polishing, electricity checks, insurances up to date etc) and with the help of the Parish Council, the toilets and kitchen are, hopefully, to be refurbished very soon.

The Annual General Meeting is on Tuesday the 26th November at 7pm in the Hall. Anyone wishing to attend this meeting please contact the Secretary, Peter Hull, on 01623822148.



Sherwood Forest Probus Club

What is that?

It is a group of people who are retired or semi retired and meets once a month for a talk, meal and a chat.

When?

11.30 am on first Thursday of the month.

Where?

South Forest Leisure Centre, Edwinstowe

What can I expect?

A wide variety of illustrated talks for all tastes, from life in music, poets and places, to Antarctica visited.

With a light lunch or full meal to follow
So why not give it a try?

Colin on 01623 822 220

Just turn up or contact the Secretary

We look forward to meeting you!!

A Blue Plaque for John and Ellin Bellamy at the War Memorial site

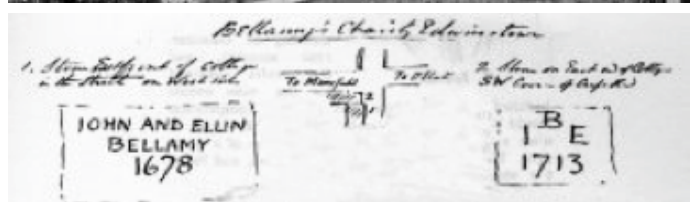
St. Mary's Church is pleased to share that they support the unveiling of a Blue Plaque to commemorate the generosity of John and Ellen Bellamy. Who were they and why should we celebrate their charitable actions? Well, you may have previously seen in the Edwinstowe Village News this article: 'RELIEF IN NEED' & EDUCATIONAL PURPOSES

The Trustees of the John Bellamy Charities invite applications for grants for 'relief in need' & educational purposes, for residents of Edwinstowe.

A little of their history. In 1719, a school started by John and Ellin Bellamy was in place for the education of eight boys, 'of poor, honest and religious parents, such as shall be born in the town.' His Will stated, 'I give and bequeath the school house in Edwinstowe - 1724.' It was situated on the site of the War Memorial which was constructed in 1919. Mr. John Hanson was Schoolmaster and parish clerk from 1770 until 1805 when he died.

John and Ellin gave yearly rent from 2 houses adjoining the schoolhouse to be distributed by Trustees to 4 of the Poorest Honest Widows who were" thought to be the most Needfull". Around 1800, the 2 houses were pulled down and Parish Officers chose widows to occupy the 4 small houses which replaced them.

The dedication stone from the original Alms-houses is built into the wall round the War Memorial, although the inscription has totally worn away (last section of wall, top of the High Street). It read 'John and Ellin Bellamy 1678'



Edwinstowe Historical Society 'John Bellamy'

In 1719, the Rev. John and Ellen Belamy of Edwinstowe, endowed alms houses for the poor, and other benefits for 4 necessitous widows' and started a school for the education of 8 boys.

These buildings were situated on the site of this present War Memorial.

The Charity continues to support residents.

Women WI Village News

theWI
INSPIRING WOMEN

We've had a relaxed summer as we don't have a meeting in August but we do have a day out. This year we visited The Glazey Place in Mansfield and painted pottery. We also hosted a cake and refreshments stall for the open day at Edwinstowe Fire Station. This was our second visit and we are pleased to have been invited back for next August already. The latter half of 2019 is looking at being even busier than the first! In addition to our regular meeting we have trips out, bingo nights at South Forest and workshops.

Coming Up -

Bingo Nights - We have held 2 so far and they are proving very popular. Look out for details of upcoming events on local social media pages or posters around the village.

Craft Club - The first Saturday of the month 1pm -4pm at The Village Hall. Our new Craft Club is open to non members and is £3. There may be sometimes a small extra out for materials.

15th October - Monthly Meeting - Self Defence with Vicky

19th November - Monthly Meeting - Christmas Craft

28th November - Edwinstowe Christmas Lights - Come and visit our stall selling crafts, mulled wine and hot chocolate.

30th November - Members coach trip to Melton Mowbray Christmas Market.

17th December - Monthly Meeting - Bring and Share Christmas Party.

21st January 2020 - Monthly Meeting. Membership renewal and 'Getting to Know You'

Membership of Edwinstowe Merry Women WI is open to all ladies from Edwinstowe and the surrounding areas. Meetings on 3rd Tuesday of the month 7pm - 9pm at Edwinstowe Village Hall. We welcome guest visits which are charged at £5 each. Do come along and see what we have to offer!

Phone: 07780 474142

Email: edwinstowemerrywomenwi@gmail.com with any questions.

Facebook: Edwinstowe Merry Women WI

The Rotary Club of Sherwood Forest Robin Hood Award for 2019 - 2020

Nominations wanted !

The Robin Hood Award is given to someone from the Ollerton, Edwinstowe, Boughton and surrounding Villages who has served their community tirelessly, often in a volunteer capacity.

Previous recipients have come from all walks of life, for instance a Guide Leader, someone helping older people or people with learning difficulties to live a fulfilling life, a community music stalwart, Youth Leaders and the like. Last years recipient was Andrew Mellors from Edwinstowe who cheerfully keeps the village neat and tidy.

The Robin Hood Award is given by the Rotary Club of Sherwood Forest annually; it is a bespoke wooden carving of Robin Hood in a showcase and is unique. The recipient keeps this wonderful carving for a year.

The Rotary Club would like nominations for anyone YOU know who you think would deserve to receive the award for 2019-2020

Nominations can be e mailed to

stella.herbert@btinternet.com, or by post to the Secretary- Rotary Club of Sherwood Forest, c/o The South Forest Leisure Complex, Clipstone Rd, Edwinstowe, NG21 9JF. Nominations should be in by Dec 21st 2019

The presentation will be at the Rotary Club of Sherwood Forest's Annual Charter Lunch in on February 9th 2020





The Dukeries Singers

Having spent a big lump of time sweeping, cutting down, tidying etc. I have come to the conclusion that Autumn has arrived big time as the garden is liberally coated in leaves, dead plants and crab apples for England!! I shall be needing a new brushhead soon.

The Choir is well into preparations for our Autumn and Christmas engagements.

If you have previously enjoyed singing with a Choir and would like to explore the experience again, we have vacancies throughout the Choir, particularly among the male voices. We do appreciate our men. Their harmonies in the lower voices add such a depth of quality to our music and give the altos and sopranos a firm base on which to sit. (Figuratively not actually of course.)

This would be a good time to give us a try as we begin our Autumn/ Winter and Christmas rehearsals. We are preparing new pieces and refreshing some favourites. We practice every Wednesday evening from 7-30pm. until 9-00pm. upstairs in the Theatre refreshment area at the Dukeries Academy, Ollerton. This is best accessed via the Leisure Centre entrance and Car park.

If you are considering booking us for your Fund Raising, Charity or Christmas Event, be aware that Christmas has a unique characteristic; it appears from nowhere!! We already have several bookings for Carol Sings and Concerts but our Secretary Pauline on 07951609217 would be delighted to hear from you as we do have some available dates.

At present we have bookings for;

Thursday 28th November - A Carol Sing at Edwinstowe Lights' Switch on.

Saturday 7th December - Our Annual Christmas Concert at the Jubilee Hall, Ollerton

Saturday 14th December - Carols and Christmas music at the Alders Restaurant Ollerton

Friday 20th December - Carols and Christmas music at the Masonic Hall, Mansfield.

You can find information about the Choir at thedukerliessingers.com and also on Facebook, Twitter and YouTube

Dare I ask for some lovely Autumn sunshine after my complaints of the extreme heat in the Summer?

Jan

D.W CONSTRUCTION Local Builder & Bricklayer

**PROFESSIONAL, AFFORDABLE, RELIABLE
SERVICE**

New Conservatories, Conservatory Renovations,
Garage Conversions, Single Story Extensions, Porches,
Boundary Walls, Re-roofs, Chimney & Roof Repairs,
Lintels, Insurance Work & Much More...

Visit: www.dwconstruction.co.uk

Call Now for FREE Quote: 07952093143 or 01623 847267

EGMANTON PLANT HIRE

For a full list of hire equipment please see:

www.egmantonplanthire.co.uk

ANDREW BANKS

Phone/Fax: 01777 872316

Mobile: 07971 627588

VAT registered

Please see our website for current price list

St. Mary's C of E Primary School

With the new academic year already well underway, please allow me to introduce myself as the new Headteacher of St. Mary's school. Having worked as class teacher, then Head of School, I have been part of the St. Mary's school community for the last 13 years; a community which is very dear to my heart and an honour to serve.

You may have noticed the contractors' vans on site over the summer holidays as we have made improvements to our hall, Key Stage 1 and Foundation Stage classrooms; changes which have proved popular with pupils, staff and parents alike.

We have also revised our vision and launched our new logo, making it clear that our Christian values are at the root of all we do; that we are stewards of the Earth, blessed by our location at the foot of the Major Oak and that we work to ensure that all our children achieve in the context of feeling valued and accepted, where our names are all written on the palm of God's hand (Isaiah 46).

If you would like to visit to find out more about our work and to see why we think St. Mary's is such a special place to be, you are most welcome.

Miss Maria Parkin. Headteacher. St. Mary's School

PETER WARD SOLICITOR

TURNER ATKINSON & WARD SOLICITORS

23, HIGH STREET EDWINSTOWE NOTTS NG21 9QP

TURNER ATKINSON & WARD OFFER
A FULL RANGE OF CONVEYANCING
SERVICES, PREPARATION OF WILLS,
AND ADVICE AS TO PROBATE

APPOINTMENTS ARE AVAILABLE AT
SHORT NOTICE AND HOME VISITS ARE
MADE UPON REQUEST

TEL 823450

FAX 823456

WE ARE AUTHORISED AND REGULATED BY THE
SOLICITORS REGULATION AUTHORITY
REGISTRATION NUMBER 101320

Ok Blinds

Affordable Stylish & Quality Blinds Made To Measure

07555618555

 Find us on
Facebook

Edwinstowe, Notts

Verticals Venetians Wooden Pleated
Romans Rollers

D.A Williams

Electrical Contractor

REWIRES, SHOWERS, INTRUDER ALARMS
SECURITY LIGHTING
& GENERAL ELECTRICAL WORK UNDERTAKEN

TEL: 01623 836517
07719999781

Dennis Tattersall and Dennis Wood

Two well known and respected Edwinstowe residents sadly died this year. Both were in their early nineties and had contributed greatly to various aspects of Village life.

Dennis Wood was a teacher and Head Teacher, who will, without doubt, be remembered by many former pupils.

In more recent years Dennis was very active in the British Legion and around this time of year could be seen around Edwinstowe, knocking on doors, raising funds for the Legion through the sale of poppies.

Dennis Tattersall was a long time local Councillor, serving the Parish for 34 years; for many of those years as Chair or Vice-Chair.

He too took an active role in the British Legion for very many years and also took part in fund raising alongside Dennis Wood. He was the Vice Chair of the PPG attending his last meeting shortly before his death.

Both Dennis Wood and Dennis Tattersall will be remembered by many for the active roles they took in village life and sincere commiserations go to their respective families.

Police Beat Surgeries

During one of our last beat surgeries it was raised that many people are unsure how to report crime and anti-social behaviour to the Police.

For non-emergencies you must call us on 101 and in an emergency call 999

Local beat officers have work mobile phones however it is not best practice to report incidents directly to them on voicemails or text messages. The officer may be off duty or on period of annual leave. Therefore the messages would not be read until their return, which could be several weeks. If just want to let us know something or request a call, then by all means a text or voicemail is fine.

Alternatively you can report crime online. You can use this service to report a non-emergency crime or incident to the police. You can do this at report.police.uk

Before you start

Call 999 to report an immediate threat to life or property. (Textphone: 18000)

1. You'll need to provide an email address or phone number.
2. All reports are reviewed by the police and if necessary we'll respond by email or phone within 24 hours.
3. Your report will be sent over a secure internet connection and all information will be treated confidentially.



PRECIOUS POOCHIES
Pet Spa & Boutique

**FREE UPGRADE
TO LUXURY SHAMPOO &
CONDITIONER
WHEN YOU PRODUCE
THIS ADVERT IN STORE.**

UNIT 3, CHURCH FARM BUSINESS CENTRE, EDWINSTOWE, NG21 9NJ, 01623 239775,
WWW.PRECIOUSPOOCHIES.COM

Major Oak Pop Choir

The Major Oak Pop Choir is an adult choir, exclusively for Ladies.

Based in Edwinstowe, Nottinghamshire, there are no auditions to join, and you don't even have to be able to read music. Our choir members come from all walks of life and come along to rehearsals each week to enjoy friendship, fun, and to share a love of singing popular chart hits, old and new.

Through their performances, the choir raises money for charity. Since being formed in 2015, they are proud to have raised over £25,000 for good causes, many of them local to Nottinghamshire.

The choir have recently resumed rehearsals after a well-earned summer break and have come back refreshed and ready to learn a new programme of songs for the concerts which will be taking place later in the year.

Concert dates for your diary include:

Saturday November 16th The Crossing, Worksop

Saturday November 23rd Retford Town Hall

Thursday November 28th Edwinstowe Xmas Lights

You can find out more about the choir, including further details of our future performances by finding us on Facebook @ majoroakpopchoir, visiting www.majoroakmusic.co.uk, or by contacting Pauline Daglish on 07450 316756.



Forest Cemetery New Garden of Rest

Edwinstowe Parish Council is pleased to announce a new Garden of Rest in the Forest Cemetery, Edwinstowe.

This new area will provide plots for interments of cremated ashes, as our existing Garden of Rest areas have few plots left.

This new garden is ideal for the reservation of family plots, as loved ones can be interred next to relatives. These plots cost £250 for residents of Edwinstowe and £400 for non-residents.

Please Contact the Parish Council for further details and to view plots.

Forest Cemetery Memorial Bird Boxes

Do you wish to provide a home for our feathered friends and remember a loved one at the same time?

Memorial Bird Boxes can be purchased from Edwinstowe Parish Council. We provide the bird box, memorial inscription of your choice and place the box on your chosen tree within the Forest Cemetery, cost of £100.

Please contact the Parish Council for an application form 01623 824243



Thoresby Colliery Band



The band have had an exciting few months through the summer season with several concerts and a contest win among the highlights. On 6th of July, the band travelled to Whiston to compete in the Championship section of the annual Brasstonbury Contest.

They played an entertainment programme consisting of pieces commemorating the 70th anniversary of the D-Day landings.

This was poignantly narrated by Greg Abbot, who read a selection of letters from the front line. The band gained the title of Champion Band along with Principal Euphonium, Daniel Jackson, picking up the soloist prize for his sublime performance of Karl Jenkins 'Benidictus'. This was followed by well attended outdoor concerts in Thoresby Park, Arnot Hill Park, and outside our band room in Clumber Park. We have a number of concerts coming up this season including:

26 October - St. Mary's Church, Edwinstowe

30 November - The Crossing, Worksop

21/23 December - The Royal Concert Hall, Nottingham

For tickets and more information about the band please see our Facebook page or call Elizabeth Pearce on 01623 825852



WOODHEAD

FUNERALS



empathetic • considerate • respectful

A Compassionate and Caring Service

Continuing to serve Edwinstowe and the surrounding area with our Funeral Services since 1946 and with roots in funeral undertaking dating back as far as the mid 1800's

Contact — Melanie Bainbridge

Office: 01623 871101 or
Mobile: 07817 120487

Please ask us about our pre-payment funeral plans



Perfect Choice

FUNERAL PLANS

PRESS RELEASE

Date of issue: 04/09/2019

More people turning to Citizens Advice as the service marks its 80th Year

Citizens Advice Sherwood & Newark reveals Welfare Benefits was its top local issue last year, with 1,215 people turning to its advisers for help.

Citizens Advice celebrated 80 years of service across England and Wales on 4 September 2019. The charity was formed at the onset of World War II. It originally helped people deal with the impacts of war, such as rationing, evacuation and losing their home in the Blitz. In its 80 years of service, the organisation has helped the British public find a way forward with a wide range of problems.

Across England and Wales, Citizens Advice helped 100,000 more people this year compared to last, with a total of 2.7 million people helped by the charity and its network.

The charity's national impact report shows the number of people seeking advice face-to-face, via email, phone or webchat in the 2018-19 financial year:

- Consumer and utilities: 930,000 people, up 11% from last year
- Benefits: 740,000 people, up 4% from last year
- Debt: 380,000 people, up 2% from last year
- Housing: 260,000 people, up 3% from last year

Of the people the charity helped, 42% of people reported they had a long-term health condition or disability.

In 2018-19, for every £1 invested in Citizens Advice, the charity generated at least (at a national level):

- £2.07 in savings to government and public services - a total of £485 million in savings. This is by helping stop problems occurring or escalating which reduces pressure on public services like health, housing or out-of-work benefits
- £10.92 in wider economic and social benefits - a total of £2.6 billion in savings. This is by solving problems that improve lives through better wellbeing, productivity and participation for the people we help.

Chief Officer, Jackie Insley said:

"We are incredibly proud to mark 80 years of providing free, independent and confidential advice for people across England and Wales.

"Locally, we are committed to helping as many people as we can so they can find the knowledge and confidence they need to move forward, whoever they are and whatever their problem.

"We're here for anyone who needs free, impartial and independent advice."

Edwinstowe Gutter Cleaning & Repair Service



Damp Problems? | Leaking Gutter Joints? | Annoying Drips?

DON'T WAIT UNTIL IT'S TOO LATE!

- ✓ FREE Gutter Inspections!
- ✓ 5★ Reviews & Top Rated!
- ✓ Hi-Reach Gutter Cleaning!
- ✓ We provide OAP Discounts & Group Discounts
- ✓ FREE Quotations!
- ✓ 8yrs+ Experience!
- ✓ 12mth Repair Guarantee!

10% Off
Using This Leaflet

Hi! I'm Martin,

With our Gutter Vac Machines,
we can safely clean gutters...

- which are heavily soiled!
- above your conservatory!
- upto 4 storeys high!
- without our feet leaving the ground!



CALL FREE TODAY!

0800 009 64 83

www.sudell.co.uk



Find us on facebook
www.facebook.com/SudellCo

Yell.com ★★★★★
Google ★★★★★
Facebook ★★★★★



The benefits of using a mains-powered smoke detector

As winter approaches, Chris Ward from Ward Electrical Installations in Mansfield offers his advice on checking your smoke detectors.

“With the evenings now getting darker, and the days cooler, the need for electrical appliances and accessories being used for longer periods becomes certain. Simple things, such as lighting being left on, heating appliances being use, and the drying of clothes in a tumble dryer indoors instead of outdoors on a clothesline, present a very low, but potential risk of fire.

A fire strikes when you least expect it. Sometimes during the night. It also spreads very rapidly but the real killer is smoke. If you're asleep when a fire starts and you don't have a smoke detector to alert you to this, your chances of surviving are extremely low.

On average 270 of the people killed in fires each year in the UK didn't have a smoke detector, while over the last five years more than 70 people have been killed every year because their smoke detector didn't work – usually because the battery was missing or flat. This wouldn't happen with a mains-powered smoke detector. Constantly connected, a mains-powered smoke detector is wired directly into your homes electrical system, so there's no batteries to worry about replacing and no plugs to worry about being unplugged. This way you get constant protection & an early warning should a fire break out! The battery in a battery-powered smoke detector could go flat at any time and if you're not regularly checking the device you wouldn't know it isn't working!

Put simply, mains-powered smoke detectors are safer than their battery-powered alternatives.

It's worth just checking what smoke detectors you have installed, checking the unit works by pressing the button and that it has new batteries. If you don't already have them, get some advice on upgrading to some mains powered ones, for that piece of mind.

Perhaps you already have mains powered smoke detectors?

Did you know they have a 'Replace by' date, which means they may no longer be guaranteed to function correctly? This is usually around 10 years from installation. So, if your house is 10 years older or more, get them checked!

If you feel you could benefit from having your smoke detectors upgraded, or need advice on the detectors you currently have, then get in touch with your local registered electrician, who will be able to give you all the information you need. Just make sure you have smoke detectors that work this winter”

Chris Ward (Director) – Ward Electrical Installations Limited
01623 368 603



THE TYRE SHOP

New & Quality Part Worn Tyres
Wheel Balancing
Wheel Alignment

Unit 17 Beacon Court
New Ollerton
Nottinghamshire, NG22 9QL

Tel. James:
01623 836306

Mobile:
07866507083



theyreshopollerton.co.uk



WHAT GOES ON HERE AT THE ABBEY ROAD COMMUNITY CENTRE

Monday

Emily's Friendship Group

Starting at 10.00am

Monday Evening

Evergreen Club - Social/Bingo

Starting at 5.00pm

Tuesday Afternoon

Emily's Exercise Class

Starting at 1.00pm

Wednesday Evening

Evergreen Club - Dominoes/Bingo

Starting at 4.00pm

Friday Afternoon

Abbey Road - Art/Craft Group

Starting at 1.00pm

Friday Evening

Evergreen Club - Social/Bingo

Starting at 5.00pm

Keep this number handy to contact your

LOCAL ELECTRICIAN

CALL CHRIS: (01623) 368 603

We will do the small jobs, and turn up when we say we will!

Edwinstowe Parish Council

Councillors Can Be Contacted Via The Parish Council Office

Edwinstowe Parish Council

Working to make a difference

Tel: (01623) 824243

info@edwinstowe.co.uk

theclerk@edwinstowe.co.uk

www.edwinstowe.co.uk

The Parish Council is OPEN TO THE PUBLIC on

Mon..... 10.00am - 2.00pm

Tues..... 10.00am - 2.00pm

Weds..... 10.00am - 2.00pm

Thur..... 10.00am - 2.00pm

Fri..... 10.00am - 12.00pm

Clerk - **James Gamble**

Administrator - **Beverley Whitworth**

Mark Spencer MP

Parliamentary,
House of Commons,
London, SW1A 0AA

www.markspencermp.com
Social media: @mark_spencer

T: 020 7219 7143 / 0115 9681 186
Email: mark.spencer.mp@parliament.uk

Constituency - Sherwood Constituency Office
Room 3, under One Roof, 3A Vine Terrace,
Hucknall, Nottingham,
NG15 7HN

County Councillor John Peck,

T: 07748181719

E: cllr.john.peck@nottscc.gov.uk



Cllr Celia Brooks
Chairman



Cllr John Peck
& County Councillor



Cllr Adam Murphy



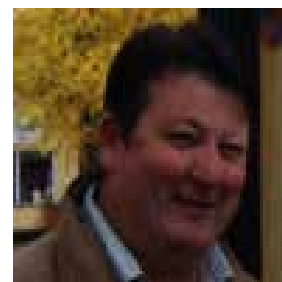
Cllr Chris Ayre



Cllr Michael Brown
& District Councillor



Cllr Scott Carlton
& District Councillor



Cllr Paul Peacock
& District Councillor



Cllr Karen Peck



Cllr Andy Freeman



Cllr Alison Troop



Cllr Rob Rodgers

LOCAL SERVICES & GROUPS DIRECTORY

Local (01623) number applies unless otherwise stated

IF YOU WOULD LIKE TO ADD YOUR GROUP TO OUR DIRECTORY LIST

Helpful Numbers

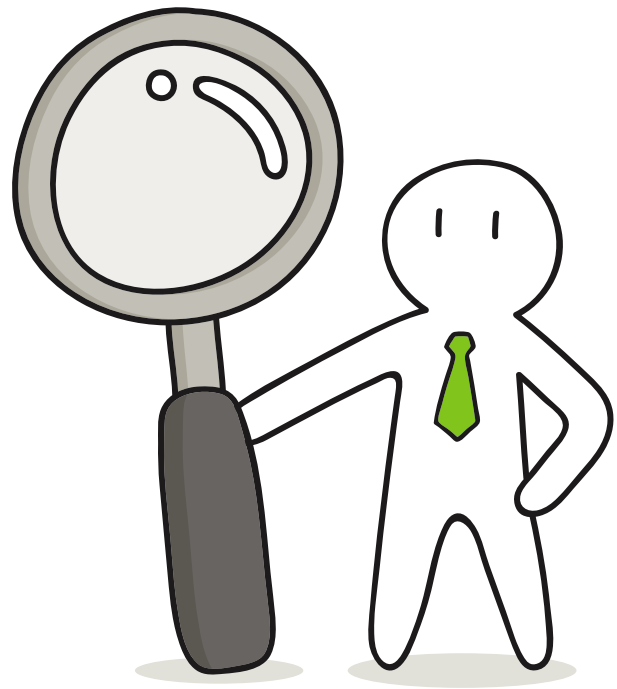
Parish Council Office - **824243**
 Newark & Sherwood District Council - **01636 650000**
 Nottinghamshire County Council - **0300 5008080**
 Citizens Advice Bureau - **0344 411 1444**
 Major Oak Medical Practice - **822303**
 Edwinstowe Library - **822280**
 Sherwood Forest Trust - **821490**
 Sherwood Forest Visitors Centre - **823202**
 The Village Hall - **07594 460846**

Please contact

The Parish Council Office on 824243
 or email: info@edwinstowe.co.uk
 / theclerk@edwinstowe.co.uk

Local Groups

Evergreen Club - **07775 902912**
 Edwinstowe Historical Society - **822264**
 Edwinstowe Hospice Support Group - **822070**
 Edwinstowe Leisure Painters - **01777 870588**
 Edwinstowe's Helping Hands - **07800 803728**
 Major Oak Pop Choir - **07450 316756**
 Dukeries Singers - **822070**
 Abbey Road Art & Craft Group - **822534**
 Royal British Legion - **824787**
 Dukeries Tai Chi Society - **822827**
 Lynds Close Luncheon Club - **07800 803728**
 Sherwood Forest Probus Club - **822256**
 Abbey Road Whist Drive - **822374**
 Edwinstowe Youth Club - **07960 481488**
 Royal Oak Court Allotment Association - roc.allotment@gmail.com
 Robin Hood Colts Football Club - **07921 250583** and **07772 908542**
 1st Edwinstowe Guides Group - **823165**
 1st Edwinstowe Beaver Scouts - **823761**
 1st Edwinstowe Brownies - **07716 818327**



1st Edwinstowe Scouts Group - **07511 363328**
 2nd Edwinstowe Brownies - **824782**

Schools

St Mary's Church Of England Primary School - **822518**
 King Edwin Primary School - **822111**
 Dukeries Academy - **860545**

Churches

St Mary's Church Office - **822430**
 St Mary's Church Rooms - **07840 435796**
 Methodist Church - **825469**

Nurseries

Bright Beginnings Day Nursery - **822440**

CONTACT The Parish Council
on **01623 824243**
or email: **info@edwinstowe.co.uk**
Business card sized advert - £25
1/4 page advert - £50
1/2 page advert - £75
Full page advert - £100
Inside front or back cover - full page - £200
Outside back cover / full page - £225



EDWINSTOWE VILLAGE NEWS EDITORIAL TEAM

Cllr John Peck, Cllr Karen Peck, James Gamble

COMMENTS

Please email your comments to:

info@edwinstowe.co.uk or drop this form in at The Village Hall.

.....

.....

.....

.....

.....

.....

.....

.....

If you would like to submit an article or an advert for the next issue email us at: info@edwinstowe.co.uk

