

Edwinstowe Village

— NEWS —

ISSUE: 27

SUMMER 2020

www.edwinstowe.co.uk

info@edwinstowe.co.uk

01623 824243



Welcome to the Summer 2020 edition of the Parish Magazine 'Edwinstowe Village News' produced by your Parish Council

We hope Edwinstowe residents are keeping safe and well, but we do know there are families in the village who are dealing with difficult circumstances. Our heartfelt sympathies to those who may have lost loved ones and those who may at this moment, be undergoing treatment or recovering. Also, we have many residents who work in the NHS, the care service and in other frontline jobs. Our community is sincerely grateful to every one of them and many Edwinstowe residents have been showing their appreciation every Thursday evening.

We are delivering our usual paper copy of the magazine, but we hope as many residents as possible will also be able to access the online edition. If you have relatives or neighbours who may not have online access, but would like to keep up with events in the village, perhaps you could make a copy available to them. Whilst village life certainly isn't normal at the moment and many community activities events have stopped for now, we're sure you'll find articles and information in the magazine which will be of interest.



Edwinstowe Parish Council

Vital Information for Self-Isolation

If you are self-isolating and have no one to ask for help, please ring any of Edwinstowe's volunteer coordinators

Chrissie Ayre: 07775 902 912

Julie Hallam: 07803 566 670

Julie King: 07506 539 749 kingjulie@hotmail.co.uk

Liane Shore: 01623 820206 / 07739 412 147

Steph Hancock: 07933 006 511

Sue Howells: 07800 803 728

Paul Peacock: 07956 370 984 peacock141@sky.com

Tracy Walker: 07736 097 989 tracywalker11@live.com

Important numbers and contacts

Major Oak Medical Practice: 01623 822303

High Street Pharmacy: 01623 822207

Citizens Advice Ollerton: 03444111444

Social services support: 03005008080

Nottinghamshire County Council: 0300 5008 080

Newark and Sherwood District

Council Helpline: 01636 650000

Edwinstowe Parish Council: 01623 824243

Local businesses will deliver to customers who are self-isolating or at risk in Edwinstowe - Essential items can be delivered

Coleman and Son Milk Delivery Service: 07599 293 374 Milk, eggs, bread etc. Allow at least 24 hours for orders.

Fruits of the Earth: 07500 804 057 - Goff's Butchers: 01623 824598

Lock's Butchers: 01623 822200 delivery Tuesday and Thursday

Edwinstowe News and Post Office: 01623 822324 to arrange delivery for all newspapers and other goods available.

Cafes and restaurants who will deliver

Bistro Balsamico: 01623 824880; Fables Coffee House: 01623 822881 South Forest: 01623 823866; The Honey Pot Café: 07706459907 Village Kitchen: 07890913127; Lime Tree Pantry Foods: 01623 836288

Other businesses who will deliver

Away with the Fairies: 07486 037 477; Robin's Den: 01623 824117 (Will take a selection of cards/gifts);

Simply Natural: 01623 825982; The Sweet Shop Edwinstowe: 01623 396300; Woolshop: 07580 132 799

Services available

Central Garage: 01623 822661 collection / drop off for servicing and MOTs

Karrisma Hairdressers: 01623 825853 / 07507 128 205 mobile service

For Collection

Robin Hood Plaice: 01623 823051 collection or delivery for over 60s

Dukeries Lodge: 01623 822553 takeaway, bring your own plate

**EMERGENCY
FOOD PARCELS**

No food,
No money,
No help!

Call 07736 097989
or 07815 951135

**EMERGENCY
FOOD PARCELS**

No food,
No money,
No help!

Call 07736 097989
or 07815 951135

If you are lonely or need somebody to talk to, call 07936452128. Edwinstowe's Outside the Cave team have dedicated people to answer your call.

They can even arrange a daily call back to keep you company in self-isolation. You can also contact them through www.outsidethecave.co.uk

From your County Councillor, John Peck

When I wrote my piece for the last edition of the magazine back in January, I had no idea of what was about to unfold and how normal life was about to change in ways we had never experienced. Firstly, I do hope all our residents are safe and well, but I know there will be families who will have been affected by the Covid-19 virus and we all feel the deepest sympathy for anyone who has suffered the loss of a loved one. I also want to pay tribute to all those in our community who are working in the NHS, the care service and all the wide range of front line jobs. They fully deserve our respect and appreciation not just now, but always. I also feel proud of the way our community has pulled together. For example, the way the parish council and the church joined together at the beginning of the lockdown to raise funds, and recruit over 100 volunteers, to provide a shopping and prescription collection service for those in isolation and food parcels for those in need. There have been many other acts of kindness, people looking out for friends and neighbours and supporting each other. Also many like me, have had to get to grips with WhatsApp and Zoom to keep in touch with friends and family!



Much of the County Council's work has been focussed on adult social care and making sure the elderly and most vulnerable are protected. Many County Council employees work in social care and schools have been open for the children of vulnerable families and from line workers. Such things as highways projects have been delayed except for essential safety maintenance. Household waste recycling centres, country park car parks and libraries are gradually being reopened. I've used some of my community fund to support some of Edwinstowe's community groups facing financial difficulty during the lockdown. Like all your local councillors, I'm still very much available, so please don't hesitate to contact me. I do hope that by the time I write for the next magazine, we are back to something like normal. In the meantime, do keep safe and well.

Robin Hood Festival cancelled, but the Sherwood Forest car park has reopened

Residents won't be surprised to hear that the Robin Hood Festival which normally takes place each year in August, has had to be cancelled because of the pandemic. The festival has been a highlight of the activities which take place in Sherwood Forest Country Park each year and will be missed by the many thousands of visitors who flock to Edwinstowe to enjoy the fun. We do hope it will be returning in 2021. At the time of writing, the Visitor Centre remains closed.

One bit of good news is that the car park has reopened as the lockdown is easing up, but we do hope visitors to the forest continue to observe the social distancing rules.

People parking on verges - please don't

Local councillors regularly receive complaints from residents about people parking cars on Edwinstowe's grass verges. There are several verges around the village which are badly churned up with little grass left. Scruffy, unkempt verges look unsightly and spoil the look of the village for residents and visitors. It also makes it difficult to mow the grass. We know parking is a problem for some people but please respect our special village and don't park on the verges.

**Information about Parish Council facilities and contacting the office**

The Parish Council office has been closed to the public since the lockdown began although the Parish Clerk and administrator may be contacted by phone or email. Information is also available on the website. The Parish Council is not holding physical meetings but procedures are in place to carry out essential business and decision making. Parish Councillors can be contacted through a message to the office and your District Councillors and County Councillor are all available through their usual contact details... Henton Road and Fourth Avenue children's play areas are now open as are Jubilee Park and the allotments. The public toilet on Mansfield Road remains closed. The Parish Council followed government guidelines in closing the Parish cemetery to members of the public early in the lockdown, but reopened it when government advice changed. Those attending funerals should follow the advice on the conduct of funerals. Our Parish Council team continue to keep the village well looked after and as far as possible, litter free. Chair of the Parish Council, Cllr. Celia Brooks said, "The announcement of the lockdown in March meant the Parish Council had to make some difficult and unprecedented decisions. Our priority throughout has been to act responsibly to protect our staff and members of the public. We have followed government advice throughout. This does mean some of our services will remain at a reduced level and some amenities will remain closed until it is safe to reopen them. I'm sure residents will understand the reasons for caution and I'm sure we are all looking forward to returning to normal life as soon as possible."



Edwinstowe High Street - back our businesses!

As with High Streets and businesses all over the country, Edwinstowe has been hard hit. It's been sad to see many of our shops and other businesses closed. We hope all they will be able to re-open as soon as it is safe to do so.

Our High Street with its variety of shops, cafes, restaurants and pubs is a matter of great pride and helps give Edwinstowe part of its distinctive character. The Co-op, the pharmacy, the pet shop, greengrocer, butchers and newsagent/post office have remained open and all have provided a valuable service. Some of our cafes and restaurants have been providing take away services. Chairman of the Parish Council, Councillor Celia Brooks said, "The Parish Council has always recognised the importance of our High Street and we're hoping all our businesses will survive this difficult time and be able to reopen when it is safe to do so. As always, we will work hard to look after the High Street, but when businesses reopen, I hope all residents will try to do at least some of their shopping locally and use the cafes, pubs and restaurants. Spending money locally will help our High Street survive and ensure Edwinstowe remains a great place to live."



Dog fouling - scoop it, bag it, bin it

Most dog owners do just that. In fact, many of the complaints councillors receive about dog fouling around the village come from dog owners.

They resent the fact that they are doing the right thing but that some other dog owners aren't. Dog fouling spoils our village: it's unpleasant and potentially dangerous to young children especially.

The fines for culprits are pretty hefty too!



Edwinstowe's Robin Hood and Maid Marian statue damaged in motor accident

An unfortunate motor accident occurred on the High Street at the end of May causing significant damage, including to Edwinstowe's iconic statue of Robin Hood and Maid Marian which has stood proudly in the centre of the village for twenty-two years. Reports suggested the driver of the car blacked out after turning into the High Street and the out of control vehicle travelled down the road causing significant damage on the way, eventually coming to a halt after hitting the statue. Emergency services were quickly on the scene and the driver was taken away in an ambulance. Thankfully and perhaps amazingly, no pedestrians were injured and it is thought the driver of the vehicle has made a recovery.

As for the statue, Maid Marian lay on the ground and Robin Hood whilst still standing, was minus part of his right arm. A County Council Highways team arrived promptly and made the accident scene safe and began the process of clearing up. Several parish councillors also arrived to assist the clearing up and assess the scale of the damage. They made sure Maid Marian and other parts of the statue were placed safely into storage. Parish Council amenity staff were there the next day, working hard to finish the clean up. Apart from the statue, several benches, cast iron litter bins and a planter were destroyed. A tree was also knocked over. Chair of the Parish Council Councillor Celia Brooks said, "Our first thoughts are with the driver and we are relieved no pedestrians were injured. We're obviously saddened by the scale of the damage and especially to our iconic statue."

Edwinstowe's County Councillor, John Peck has made contact with County Council officers to discuss the replacement of the tree, the street furniture and of course the statue. John said, "I've been assured everything will be replaced as quickly as possible although the statue may take a bit longer to repair or replace. Residents will be pleased to hear this work has been given a high priority by the County Council and I've been very impressed by how quickly they've set about with dealing with the situation. I'm also grateful to the parish council amenity staff for their work clearing up."

The statue, all the street furniture and lamp posts on the High Street, the paving and many of the shop frontages were installed 22 years ago, as part of a million pound project to regenerate the High Street, involving several local councillors, community groups, District and County Councils.



Robin Hood after the accident minus his beloved Maid Marian

Edwinstowe and the Coronavirus

As the lockdown eases nationally it's worth looking over the weeks from early March when it became clear that the pandemic had reached our shores.

All our hearts go out to those who have lost loved ones to this virus and also to those who have contracted it and are now recovered. There are also those in the Village who may well have had the virus but were undiagnosed or asymptomatic.

We all owe a big thank you to all the people and businesses who have made sure that the people of Edwinstowe were catered for in a number of ways.

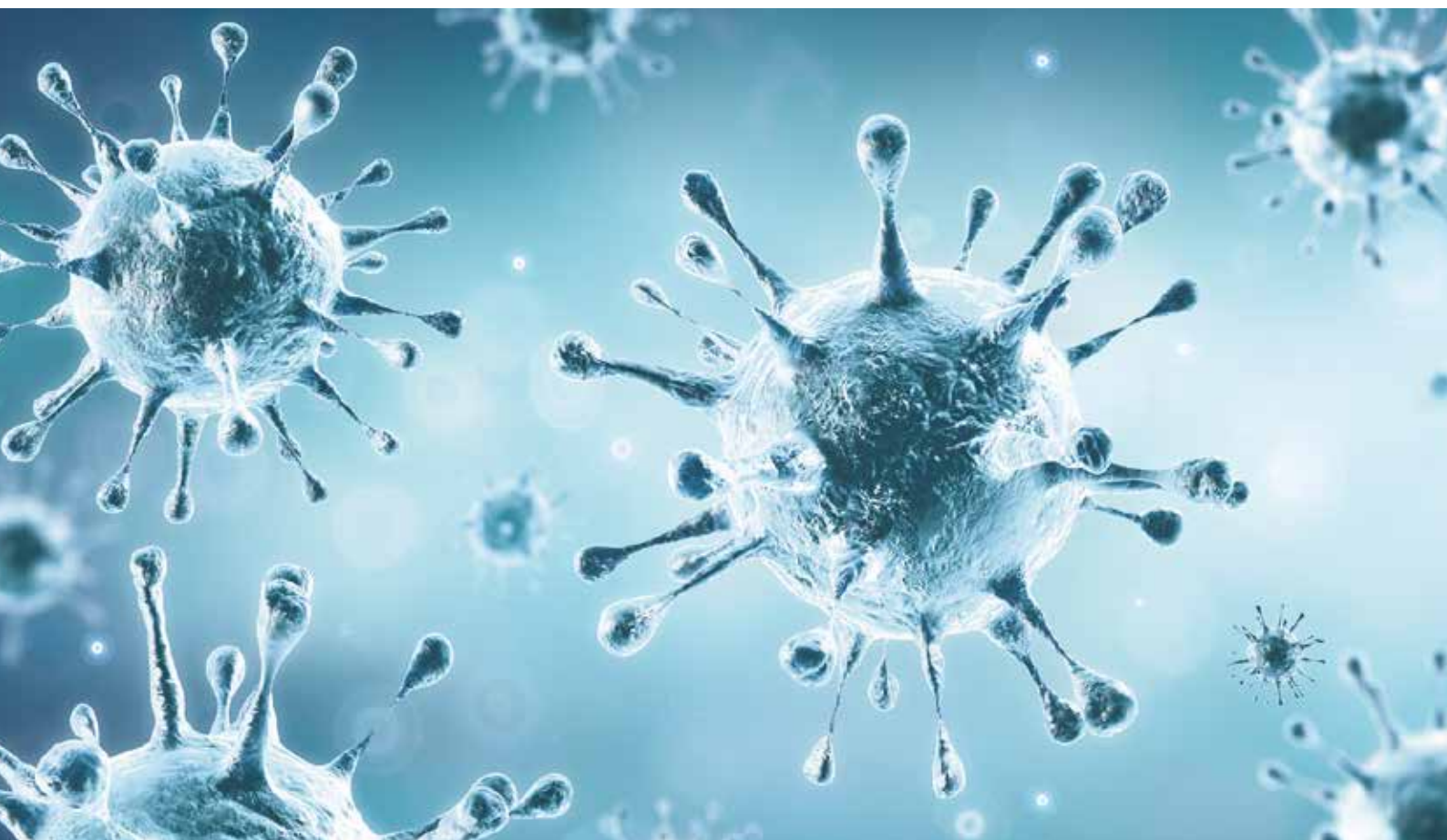
Thanks go to the large volunteer group and co-ordinators who made sure that no-one in the Village need be forgotten. Shopping has been done, prescriptions collected and other needs met for those unable to leave their homes.

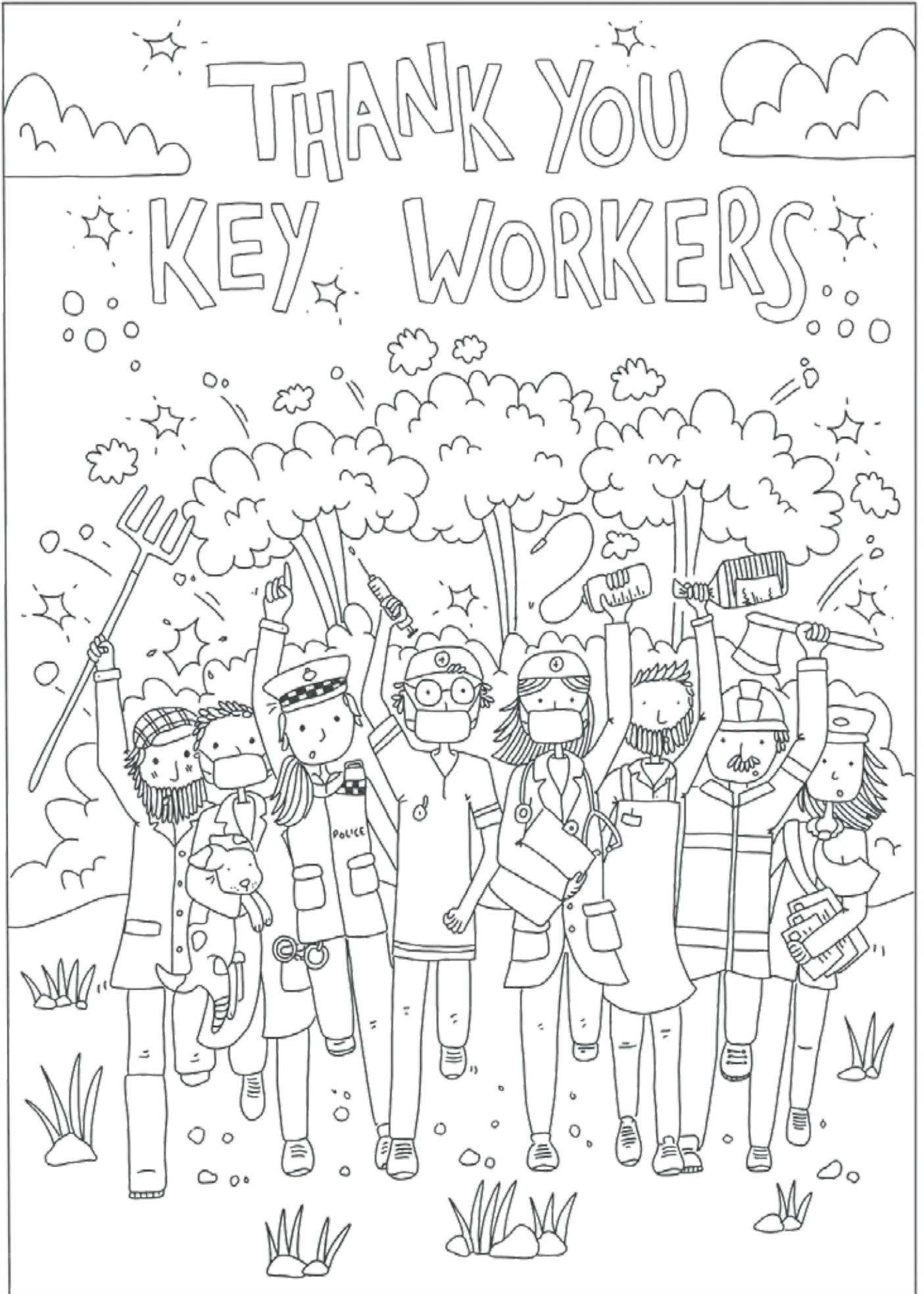
Local shops and businesses all over Edwinstowe have provided delivery services as well as being open for customers to visit if they were able. Some have diversified in creative ways! As an Edwinstowe resident I feel very fortunate that in this time of national pandemic I have been able to get everything I need for day to day living in my own village.

I would also like to give a big thank you to our Edwinstowe Parish Council staff, both those in the office and the amenity workers. In spite of being in lock down and, for the most part, working from home the office has continued to carry out the usual work connected with such areas such as the allotments, the cemetery and general enquiries. Our amenity workers have continued to keep Edwinstowe clean and tidy as well as doing essential maintenance work.

There has been an easing of lockdown but the pandemic is still out there. We are all looking forward to the time when we can socialise, shop and work freely again but until then please take care.

Celia Brooks





The Community

The word “community” is often taken for granted, a word that some may feel is more associated with a by-gone era, particularly when it is affixed with the word “spirit”. However, in recent months, we have realised how much community spirit still actually exists within our amazing village. Mixed with a little hope and the whisper of a solution, the answer can be found in the rekindled community spirit.

I have been amazed and truly humbled at the response of our village when called upon to help those most in need. Thursday evenings have become a symbol of our thanks to those working in the NHS, key workers and other essential workers, who have worked day and night throughout the pandemic to keep the people of our country cared for and safe. On a local level however, I wanted to take a more direct approach to you, hence my words now.

To the local volunteers, who stepped forward to help those in need, whilst potentially putting themselves in harms way, you truly have my respect and thanks. It really has brought about a reminder, of how important it is to be a good neighbour.

To the business community, that has gone the extra mile in delivering its services to keep residents, fed and watered, I say thank you. I am sure all your efforts are greatly appreciated by residents and won't be forgotten.

To the essential services, such as the Medical Practice, and Pharmacy, I say thank you for all that you have done and the professionalism with which you have continued to serve our community especially over the last few challenging months, in order to keep us fit and well.

To community groups and organisations, I thank you for being there when most needed, offering a guiding hand and reassurance.

There is still a long way to go in the battle against the virus, and it seemed quite apt in us celebrating, (albeit in a slightly different format), the 75th Anniversary of VE Day in the midst of a new battle, that, whilst we were (and still are) surrounded by sadness and worry, we can unite, endure and overcome.

These have been and still are, testing times for us all. I hope we never have to face these challenges again, in this generation, the next or beyond. Incredible sacrifices have been made to try to bring the virus to a halt, and I thank you, the residents of Edwinstowe for following guidance to keep yourselves and others, safe and well.

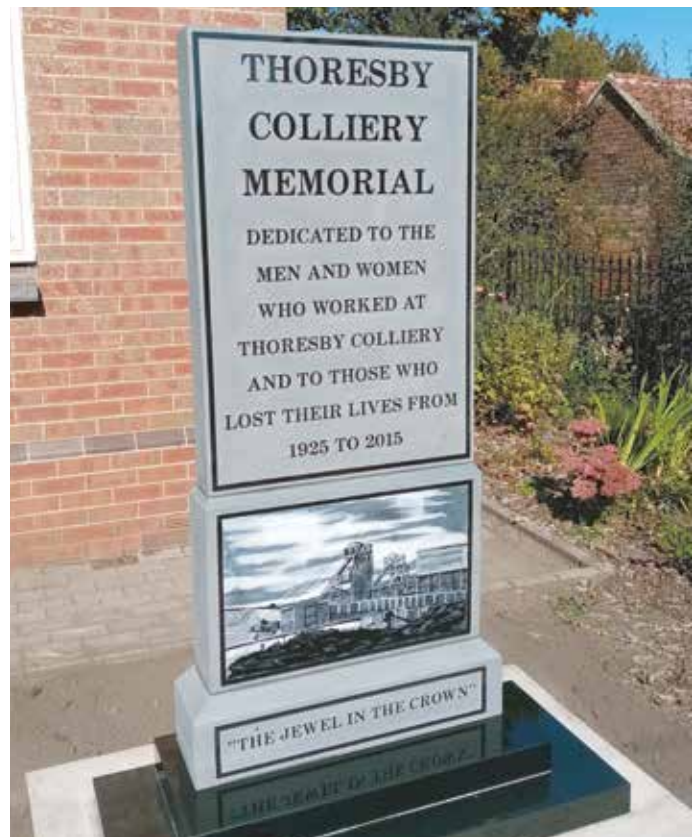
When the virus ends, there will be a new battle to be had, in helping many lives return to some sense of normality and for those businesses that are still closed, they will all, like never before, need our support to rebuild.

Together we can. As a community we will prevail.

Cllr Scott Carlton

Thoresby Colliery memorial garden in bloom

The memorial garden created by the Parish council last year to remember those who worked at Thoresby Colliery and those who lost their lives, is now in full bloom. Residents might want to stop by and enjoy a few moments peace and tranquillity. Councillor John Peck who chaired the working group which led the project said, “This is the first year and the garden is already full of colour. We have managed to transform an unsightly bit of land into a beautiful garden, which is a fitting memorial to the Colliery and those who sadly lost their lives.” The garden is situated next to the Village Hall on Mansfield Road.



The Community



Council provides grants to improve home heating

Newark and Sherwood District Council currently has grant funding available to help local residents on low incomes to repair or replace inadequate heating systems.

If you or someone you know is on a low income and suffering with a long term health condition made worse by living in a cold home, the council may be able to help thanks to the Warm Homes on Prescription scheme.

Last year Newark and Sherwood District Council supported more than 45 residents (private home owners and those in private rented accommodation) to make their homes warmer, potentially avoiding unnecessary hospital admissions due to cold-related illnesses.

A Newark and Sherwood resident who recently benefitted from the scheme said:

“As I’ve got older I was finding it more and more difficult to manage my solid fuel heating. I can’t get down to clean out the ashes and I’m not strong enough to carry the buckets of coal any more. I hadn’t got enough savings to fit a new gas central heating system but I was worried about relying on family and friends to keep my fire going. My neighbour said help might be available through the Council so I asked her to call them for me because my hearing isn’t so good. They were great and sorted everything out for me and I didn’t have to pay a penny. I’ve now got a brand new gas central heating system which can be set to come on automatically. It keeps me lovely and warm without any of the hassle of solid fuel!”

If you would like to know more about the Warm Homes on Prescription scheme, contact Newark & Sherwood District Council on 01636 650000.



Edwinstowe's High Street Chemist

I have always considered Edwinstowe to be a fantastic place to live, my view is regularly reinforced when outsiders tell me that they would love to live here. We are blessed with so many local people who care about the village and the people living here, evidence of the village's response to the Covid 19 proves this point. Over 100 people signed up to volunteer to make sure our residents were not left without vital supplies and hundreds more have taken the time to look out for their neighbours, this has been so heart-warming.

One of the things we do in normal times is take things for granted, I have to say I can be guilty of this. One of the things that I took for granted was the importance of Edwinstowe's Chemist. Not anymore.

Alongside other people I have been lucky enough to volunteer as a 'door control' at the Chemist during the lockdown, ensuring social distancing and allowing the staff to get on with their job. I have been able to see at close proximity the fantastic commitment and professionalism that the staff have. Every customer is met with a friendly face and are looked after in a caring and comforting way, the activity behind the counter never stops.

Only now do I realise how hard the staff work and how valuable our High Street Chemist is. As lockdown restrictions are relaxed and our village gets back to normal, I hope we will all celebrate our brilliant Chemist staff alongside other vital key workers



Edwinstowe's Covid -19 Community Response

Edwinstowe Parish Councillors have been working to support older and vulnerable residents, who have been self-isolating, from the very start of this crisis. It was clear from the outset, that Edwinstowe residents were desperate to help those in need and our role in community support was developed by Councillors Alison Troop, Adam Murphy, Paul Peacock and Karen Peck who formed the Council's Covid-19 response group and formulated a plan to bring together a comprehensive network of support across the village. Our goal was that no resident would be self-isolating and find themselves scared and without help. This was supported by all councillors and when launched, the response from our community was overwhelming.

An appeal for volunteer coordinators by Cllrs Peck and Peacock quickly created a team who would match residents in need to volunteers who wanted to help. Cllr Murphy used his IT skills to create an online form that residents could securely fill in to provide a database of volunteers. Cllr Murphy said, "I couldn't believe how quickly the numbers of volunteers were going up. I knew then, this would be a success." Cllr Troop linked with voluntary groups who were ready to offer support and Cllr Scott Carlton joined the group and liaised with businesses to identify home delivery options.

It is a tribute to the residents, businesses and community groups of Edwinstowe that within 48 hours we were able to create the leaflet with a comprehensive package of support. This leaflet provided valuable information about the Community Volunteer Scheme, home delivery options and useful contacts for all residents who were self-isolating or shielding. By joining with Reverend Ian Webb and St Mary's Church and their project to offer residents help with emergency shopping, the leaflet was printed and delivered to every home before full lockdown was announced on 23rd March.

As a council we could not provide the services residents needed, but as councillors we could help bring the community together to care for each other. The council's Covid-19 group have continued to support the community volunteers and by working closely with Rev. Ian Webb, have extended the community support network to include the Ollerton Community Action Response group to provide food parcels for those residents in the greatest need, with no food, no money and no help. Read Reverend Ian Webb's article about this scheme to find out more.

We are living in extraordinary and uncertain times, but we know our community will continue to work together and care for each other.



Edwinstowe Community Volunteer scheme: meet the coordinators

The Edwinstowe Community Volunteer scheme was launched on 17th March as lockdown commenced. The scheme has enabled residents who were self-isolating and did not have family, friends or neighbours locally to help them with life's essential tasks such as local shopping, collecting medication or simply posting a letter.

The team of volunteer coordinators, whose names you will have seen on leaflets, have been key to the project's success and you will have recognised them as residents who are known and trusted in the village. They each have been prepared to dedicate their time and skills to answering calls and ensuring residents in need are matched with local volunteers ready to help them. Parish Councillor Karen Peck, who has been working with the coordinators, says "They are the 'A' team! Individually they're amazing, as a team they have solved every problem and worked together to provide the very best support for our village. I've been told, our scheme is the 'gold standard' and they have made this possible." Coordinator Tracy Walker said "We got this off the ground so quickly! Each of the coordinators has used their strengths to support our network of volunteers and I'm so pleased our matching process has enabled new friendships to build up between volunteers and residents." Coordinator Tee Ailward said, "Being part of the coordinating team is about bringing together our wonderful team of volunteers, who are giving up their time to help those members of our community who really need it." So far over 150 matches have been made and we know that many residents have established new friendships and had continued support from volunteers who they have been matched with. A family member who was unable to help her father said, "A huge thank you for doing my dad's shopping, it really is appreciated at this difficult time." Coordinator Chrissie Ayre described her role as "Marvellous! When I tell family and friends about our scheme, they can't believe it."

The government is lifting restrictions on households, but we know that vulnerable residents who need to self-isolate or be shielded still need help and our community coordinators can still be contacted. The recent leaflet for contact numbers and services has been delivered to all households in Edwinstowe, and can be found in this magazine.

Edwinstowe Community Volunteer scheme: how our volunteers have been supporting residents

Edwinstowe Community Volunteer scheme: how our volunteers have been supporting residents

Across the whole of Edwinstowe, neighbours, family and friends have been helping residents to self-isolate and shield those who are most vulnerable to the worst effects of coronavirus. The support, friendship and kindness has been overwhelming. From the outset, it was clear that some residents who were self-isolating would not have friends and family in the village and this is where the Community Volunteer scheme stepped in. The community coordinators have been matching residents to the many volunteers who signed up through the online form to offer their help. We realise that not every volunteer has been called on, but all have been keen and willing to help and over 150 acts of kindness have been provided so far to residents in need. What have our volunteers been doing? 94 prescriptions and medication have been collected and delivered; we have had over 50 requests for shopping and volunteers are now regularly shopping for over 25 households. In many cases, after the initial match, volunteers have maintained support for residents and have built lasting friendships. Volunteer Trevor Haywood said, "I'm getting to know people I haven't met before. I've made new friends who live locally, but I haven't had the opportunity to meet until now. It makes me feel good to have been able to contribute to helping people who have found this situation so difficult."

As a new resident to Edwinstowe, Sophie Collier said, "The volunteering scheme has confirmed to me what a strong community spirit there is in Edwinstowe. It's been nice to give back to a community where my family and I have felt so welcome."

Sophie has been a keen volunteer and those leaflets didn't deliver themselves! Like many volunteers Sophie has delivered 100s of leaflets around Edwinstowe.

Sometimes our volunteers have been asked to do slightly more unusual tasks. Carly Hall recalls, "I have grown up in Edwinstowe and people have always tried to help each other. I've been really happy to help and as I drive, I have even picked up a pet's prescription for a resident. I know how important pets are to people, especially when they are on their own." We all join together to thank our many volunteers and everyone who is helping friends and neighbours in the village. Times are changing for our volunteers and many will soon be returning to work. If you would like to offer your services to help others please follow this link and complete our on line form or call 07718493404.



By Cllr Karen Peck



Looking for a Church Service online

Lifespring is online
Every Sunday 10.30am

Just go to:

[www.https://lifespring.freeonlinechurch.com/](https://lifespring.freeonlinechurch.com/)

<https://www.facebook.com/lifespringcentreollerton/>



www.lifespring.org.uk



Community Action Response
OLLERTON & DISTRICT

Community Action Response operates out of Lifespring Church and Centre. It is a "consortium" of local organisations responding to COVID-19. So far the project has delivered 774 free hampers of food (4,644 shopping bags) to 1175 adults and 721 children. The project provides telephone support to hundreds of people.

If you need help - a food hamper, telephone support, a mental health pack or children's activities, please ring:

01754 536530

Alternatively, you can email us at:

office@lifespring.org.uk



www.lifespringcentre.net

Lifespring Centre, Sherwood Drive, New Ollerton, NG22 9PP | Tel: 01623 860303 | Email: office@lifespring.org.uk

Update on the former Thoresby Colliery redevelopment – Thoresby Vale

Newark and Sherwood District Council Planning Committee considered the latest phase of the Thoresby Vale development on the 2nd of June, giving full planning permission for 219 homes to be built by David Wilson Homes.

District Councillors Michael Brown, Scott Carlton and Paul Peacock have been following the progress of the application since it was submitted in October 2019 and many changes have been made to the original application including the planting of more trees, changes to the housing mix, more parking spaces, better screening and increased green open space. Assurances have also been made about minimising construction pollution and flood mitigation.

Further concerns about details of the application were raised at the meeting by all three local District Councillors in a joint written statement to the Committee. These concerns included increased traffic within the village, extending the 30mph limit along Ollerton Road, improving pedestrian linkages into Edwinstowe, linking green spaces together, and the need for bungalows on the site.

This application is the second phase of potentially 5 phases, Planning Officers acknowledged the concerns raised explaining that measures that deal with the concerns raised will be taken in future phases.

The Parish Council and local District and County Councillors will continue to monitor the development of Thoresby Vale. Housebuilding has begun on site and is likely to continue for 8 years or so.



Update on the former Thoresby Colliery redevelopment – Thoresby Vale

Following an update on the development in March 2020, the developer, Harworth Estates has made progress on the earthworks, infrastructure, foul/surface water & utility connections and associated landscaping. The above works commenced in October 2019 and are nearing completion, construction is to start on the entrance improvement and Ollerton road which should last for 3 months. Upon completion, the Parish Council with support from Harworth will erect a new village sign at the entrance to improve the aesthetic connectivity of the Thoresby Vale development to the existing village.

Harron Homes has commenced work with the first of 132 new homes to be completed in the autumn with sales commencing soon. David Wilson Homes is awaiting the determination of a Reserved Matters planning application on Phase 2 of the site comprising 219 new homes (16 provided as affordable housing), due at committee in early June.

Transformation of the soil heap into a 350-acre country park is underway with landscaping and approximately 3000 trees have been planted so far with more due to be planted in autumn 2020. It is hoped some areas can be open to the public within the next 12 months.

A new website has been launched to provide further information and opportunities relating to the site and the surrounding area. Details can be found here: <https://thoresbyvale.co.uk/>



Major Oak Medical Practice

Patient Perspective on the Coronavirus arrangements at The Major Oak Medical Practise.

Thank you to our Medical Centre for the way they have managed the Coronavirus pandemic from their end.

The usual medical help that we would expect in pre Covid-19 times has been organised effectively. For example, immunisations, vaccines, smears and blood tests for long-standing conditions have all been carried out.

Those needing health checks have been able to have them and triage arrangements have been available throughout the lockdown. Face to face appointments have been, and continue to be, screened as necessary.

Video consultations and technology were introduced during the second week in March, just prior to lockdown, to reduce footfall if appropriate.

Reports that I have had back from various people have noted how efficient the system has been for seeing a doctor or nurse.

So a big thank you goes to all who help keep our Medical Practice serving the people of Edwinstowe in the way it does and a particular thank you to Jackie Mikail, the practice manager, for over-seeing the organisation that makes such service possible.

Chrissie Ayre, Parish Councillor

Edwinstowe Merry Women WI

I am sure that it will not surprise you, dear reader, when I report that Edwinstowe Merry Women WI (EMWWI) has not met over the past few months. The WI, like everyone else, has been affected by the necessary restrictions put in place following the outbreak of the coronavirus.

Whilst we haven't been able to come together as a group, we have stayed in contact with members via social media, sharing photos, comments and a quiz or two, and the group has recently introduced a weekly email, sharing amusing stories with members.

We don't yet know when the group will be able to meet next, but from everything that is being reported (speculated) it is looking increasingly likely that we will have a meeting-free summer, and may not meet again as a group until September.

Some of you may recall a popular game show from the 80's whereby the host would invite the 'losers' to "Look at what you could've won!" Well, in true game-show style... EMWWI members could have enjoyed a variety of engaging talks regarding: Blood Bikes; the code breakers of Bletchley Park; and women's health. They could have taken part in defibrillator training; or tried a new craft and shared a meal together.

Hopefully, members will be able to meet again in the Autumn and take part in a dance class (Sept); have-a-go at indoor curling, plus eat lots of cake (Oct) & make a decoration for Christmas (Nov). We have our fingers crossed.



Gas Care

Service | Installation | Repairs

Gas Care in Mansfield Woodhouse is a family run local firm that specialise in:

- Boiler Replacements & upgrades
- Power Flushing
- Same day boiler repairs
- Additional Radiators
- General plumbing
- Maintenance plans
- Landlord certificates

FREE 10 YEAR WARRANTY Available

24 HOUR CALL OUT 365 DAYS A YEAR

OVER 25 YEARS Experience

GAS safe REGISTER

Facebook at Gascaremansfield

e: info@gascaremansfield.co.uk Call TODAY for a FREE QUOTE on 01623 635635
w: www.gascaremansfield.co.uk



Spring into action!



★ STOCKISTS OF: B-B-Q GASES,
COMPOST, BARK, TOPSOIL,
GARDEN EQUIPMENT,
DECORATIVE GRAVEL,
PAVING, PATH EDGES,
DECKING, FENCING,
TRELLIS, POSTS & PLINTHS.



WE ALSO STOCK: Blocks, Bricks, Cement, Aggregates, Plasters & Boards, Lintels, Roofing Materials, UPVC Fascia's, All Sheet Materials including Plywood, MDF etc, Studding, Skirting, Door Frames, R.S.T, P.S.E.

EVERYTHING YOU NEED: Our ranges are plumbing and electrical fittings, building additives & adhesives such as silicone, no nails & sealants. Screws, nails and fixings, tools, paints, stains and varnish, PPE & work wear.



WE ARE VERY COMPETITIVELY PRICED & OFFER ADVICE & ESTIMATES FREE OF CHARGE!



For More Details Please Call
01623 861735

ROAD C | BOUGHTON IND. EST | BOUGHTON | NEWARK | NOTTS | NG22 9LD

e:sales@keybuildingsupplies.com | www.keybuildingsupplies.com

Brick cutting service and brick slips: www.keybrickcutting.com

Robin Hood figures for St Mary's Church

Over the past year it has been good to see St Mary's Church open during the day. There have been over 5,000 visitors from over 45 different countries. These times will return.

You may have noticed that many of the 2D Robin Hood figures from the old visitors' centre have been beautifully replaced by volunteers from the village, and church, with support from the artist, Peter Annable and Sherwood Forest Trust.



Peter Annable & Harold Green, volunteer

The church is now beginning to open but some of the new figures have already been placed in the grave yard for walkers to see as they enjoy walks.

We are delighted that a generous grant has been awarded from the Miner2Major Community Grants Scheme so the rest of the figures can be reproduced. We are optimistic that later in the year we will start work again and complete the rest.

New window in St. Mary's Church

At church we are privileged to have a number of local artefacts. The hand-stitched Parish Map is one focal point. Now however, we have a new addition to the range. Some time ago when the library was to be re-furbished, the Millennium Stained-glass Window Screen needed a new home and we gladly accepted it in church. It would be given a home in the heart of the community.

We placed it by the side of the main entrance. Although it could be seen, it was rather dim and not seen to its best advantage. We thought about putting in some lighting but there were other priorities that needed attention.

Then recently, a resident of the village, Maria Aylott, approached the church about the possibility of placing a 'Tree of Life' within the church. After looking at a number of options, we realised the 'tree' was already there – the Millennium Window Screen. Conversations led to setting the window up by the organ and putting in lighting to enhance it as a focal point for those wishing to remember their loved ones.

The project has, I believe, exceeded all expectations. Thanks to Maria Aylott, Sue Ford, Jim Rolfe (electrician), Graham Harley and Harold Green, ably supported by others at St. Mary's, we now have a fitting memorial to local history and a focal point for bereaved relatives and friends.

Pam Bird, the original organiser and others guided by Stain Glass artist Deb Morbey, cut and put together the magnificent window screen commemorating the Millennium Festival Production on the Forest.

They literally gave blood to see it completed (glass cuts etc.). Sadly, several of the 'worker/artists' are no longer with us but I am sure would be thrilled to see it displayed, as it was intended.

It is now in St. Mary's Church for all to enjoy.

The Millennium Window Screen

All are welcome – particularly those who helped to create this lovely piece of art. I was pleased to bring Pam Bird to church to see the screen in its new spot. It is lit and displayed in all its glory - Pam was stopped in her tracks when she first turned to look. I'm sure she shed a tear or two knowing future residents and visitors will be able to enjoy its beauty and uniqueness.

St Mary's Church, your church, is normally open during the day. Why not come and see this beautiful tribute to our community and spend a quiet time getting to know more about your local church?

Every Blessing. G

Edwinstowe Village News photos of Ashgrove House West Lane

Can you help? We're looking for pictures of Ashgrove House (Queen Anne/ Regency) on West Lane which was demolished in the 1960's to make way for the new Vicarage.

In the 1841 Census Mrs Dracott and her daughter ran a Girls School in this house (on what was then called Dog Kennel Lane or Back Lane West.)

In the 1930's Dr Rogerson had his Surgery at the house. Then in 1947 Dr Grey moved into the Vicarage on Mansfield Road having exchanged Ashgrove House with Rev. Basil Evans.

Do you remember Ashgrove House? Contact secretarystmaryst@gmail.com



Need an Electrician?

- No job too small
- D.B.S. enhanced checked (for your added safety)
- Reliable & friendly
- Workplace left clean & tidy
- All work carried out to current BS:7671 Regulations

24hr CALL OUT Available

All Work FULLY INSURED

Call Now for a FREE QUOTATION

Atkinson Electrical Services

01623 888477 or 07732 932596

e: info@atkinsonelectricalservices.co.uk
www.atkinsonelectricalservices.co.uk

1st Edwinstowe Scout Group Boys and Girls aged between 6 and 18 years

Well things are very different in scouting at the moment, on the 16th of March we were informed by the scout association that face to face scouting was not permitted due to Covid 19 pandemic.

In anticipation of closing the leaders created booklets for our young people so they could do some badge work at home. We then used our Face book page to send challenges to the group and the majority of the scouters are engaging with us and taking part in the activities. We then took it one step further and started having ZOOM meetings and this is a great success. It is lovely to see all the young people and the leaders.

St George's day is a very big day in the Scouting calendar it is the day when we get together with all the scouters in our district and re new our promise. Obviously we could not do that this year so we held a Group ZOOM meeting, all the members put on their uniforms and section by section we all stood up made the Scout sign renewed our promise.

Since the lockdown we have had a virtual St Georges day camp, and they had to make their den/camp, cook a meal for the family and have a virtual camp fire.

Some of the tasks they have completed include, making a family coat of arms, build a castle, lots of puzzles and colouring in, bingo nights, VE day ZOOM quiz and a murder mystery quiz.

Altogether whilst in lockdown the Beavers, Cubs, Scouts and explorers have earned over 170 badges between them. In the next few weeks we will be investing new beavers, cubs and scouts into the scout group and again this will be very different and special as we will be doing this on ZOOM

All the leaders are so proud of our young scouters and they are a credit to their parents. I would like to say a big Thank you to all the Leaders for coming up with some fantastic ideas, to the Beavers, Cubs, Scouts and Explorers for doing all the things we are asking you to do and most of all to all the parents who are being stand in leaders and providing all the equipment for our young people to engage in all our tasks.

If you have interest in your child joining scouts please get in touch with Sue Cocking Scouter in Charge on 01623 823761.

An update from the RSPB at Sherwood Forest Visitor Centre

A huge thank you from the team at the visitor centre for your patience while we navigate government guidance during the pandemic. A small staff team has been operating to keep the trails safe for locals to exercise throughout the lockdown. In that time the forest has burst into life! If you have been walking the forest regularly we hope you have enjoyed seeing Spring take hold on the unusually quiet trails.

There has been amazingly little litter in the forest over recent weeks, especially considering that we made the difficult decision to close bins while staff capacity is too low to maintain them. Thank you for taking your litter home and for following the Countryside Code around closing gates, refraining from barbeques and keeping dogs under effective control. We are still operating with a very small team so we would appreciate you continuing to take litter home and leaving nothing but footprints. We have now reopened the visitor car parks with a limited capacity to reduce dangerous fly parking on the road and in the village, and to keep the number of people in the forest low.

This is to enable social distancing and ensure those of you within walking distance can still safely exercise. We have also sign posted a one-way system to make this easier for everyone. Unfortunately our toilets, shop, café and play area remain closed for now. Follow us on Facebook for latest updates over the coming weeks.

Thanks, The Sherwood Team





S & E TIMBER



SUMMER HOUSES
DOG KENNELS
WENDY HOUSES
CHICKEN COOPS
RABBIT HUTCHES

SINCE 1980
HEAVY DUTY BESPOKE
SHEDS/KENNELS
MADE TO MEASURE

Heavy Duty Fence Panels
Oriental Garden Features
Garden Trellis

Skirting/Architrave
 • Handrails • Dado Rail
 • Door Casings • Shiplap

Heavy Duty Fence Panels, Concrete Posts & Plinths



All Planed and Rough Sawn Timbers

Decking Kits
 10' x 10' – £170
 12' x 12' – £250

SLEEPERS!
 – New & Reclaimed

Natural Sandstone Paving – Patio Packs from £17.50sq/m

• Matchboard • Floorboards
 • T & G Cladding • Loft Insulation • Beading

• Wide Range of Plywood • Chipboard
 • Eliotis • Plaster Board • M.D.F.

UNIT 45, TRENT ROAD, BOUGHTON INDUSTRIAL ESTATE SOUTH
 Telephone: 01623 861364
OPEN:- 8am – 5pm Mon-Fri; 8am – 3pm Saturdays

Stockists of PICNIC TABLES & GARDEN BENCHES

Thoresby Colliery Cricket Club

2020 hasn't been a great year for cricket or for the country in general. No sports activities have been allowed on the Fourth Ave ground since the March lockdown.

At the time of writing the club is operating under some relaxation of the Coronavirus lockdown in accordance with Government and ECB guidelines. This allows some limited use of the practice nets for club members. Juniors are taking advantage on their normal Friday training days with the seniors on weekends and Wednesday evenings.

Hopefully when this issue has been published the relaxations will have been successful and we will be able to play some cricket with the 3 senior Saturday teams, Sunday League team and Midweek team. The Junior section will be playing games at AllStars, Dynamos, U9's kwik cricket, U11's and U13's hardball levels.

As can be seen with the extensive range of teams covering all abilities and age groups the club can offer the chance to play cricket to everyone. It offers a pathway for beginners to progress through the system to County Cricket level.

For anybody out there interested in getting into the game please contact the club through:

Secretary - Martin Cheshire: 07896742669

Chairman - Trevor Haywood: 07794971586



While we are in Lockdown

by Samuel Harrison who is in Year 4 at King Edwin Primary school. It was written by Sam and his Mum, Cathy, who is a midday supervisor at King Edwin. He shared it with his teacher Miss Trolley who then shared it with all the staff at KEPS. Sam lives in Edwinstowe and is a true KingEdwinner and we're really proud of him and his poem!

*"While we are in lockdown, we had to stay home,
No seeing family we had to use the phone.*

*While we are in lockdown they closed all the schools,
Pubs and restaurants, even swimming pools.*

*While we are in lockdown home schooling was the new plan,
My mum tried her best but I wasn't a fan.*

*While we are in lockdown Captain Tom was our hero,
Raising over 30 million and that was from zero.*

NAVIRUS LOCKDOWN

King Edwin Primary and Nursery School

Although these times have been challenging, and certainly one's that none of us will have experienced before, the children from our local community have made us all so very proud. Under circumstances beyond their control, many of them have managed to continue their education not from at school, but in most cases, their own bedrooms. The pupils of all ages have been able to regularly communicate with their teachers on video calls. This has led to many live scavenger hunts, reading sessions and even class quizzes. A massive thank you must go out to all the families that have helped facilitate this - it really has made a difference to your child's education and more importantly, their mental well-being.

A special mention has to go to all those Year 6 children living in Edwinstowe who have all had their final year in primary school taken away from them. They've missed out on residential, SATs examinations, transition activities and not forgetting those end of year leavers services. And throughout all of this, they've continued to work and educate themselves from home, and not once have they moaned - amazing resilience in the face of adversity. King Edwin will certainly miss this particular year group when the time comes to say goodbye. We are sure they'll be able to cling on to some memories forged at the beginning of the year - such as the WW2 day, army experience, trip to the Holocaust Centre, Rockstar day and many sporting events and competitions. Hopefully recalling these 'said activities' in years to come will bring them memories for the right reasons.

Andy Ogle
Apple Teacher
Assistant Head Teacher

Andy Callaghan-Wetton
Headteacher
King Edwin Primary and Nursery School
Fourth Avenue
Edwinstowe
Mansfield
NG21 9NS

CORONAVIRUS LOCKDOWN

*While we are in lockdown Boris Johnson did his best,
Even he tested positive and had to rest.*

*While we are in lockdown at 8pm every Thursday night,
We clapped on our doorstep for NHS & key workers, oh what a sight.*

*While we are in lockdown the planet stood still,
Animals were roaming, playing on parks and it was brill.*

*While we are in lockdown it's now week 7 and we don't know how
long it will last,
But think of the stories we can tell in the past. "*

By Samuel Harrison (with a little help from mum)

Parkside Rd VE Day Celebrations

Thank you for your reply on the Parkside Rd VE Day Celebrations 8th May 2020.

I would like to say that all neighbours celebrated the 75th VE Day celebration social distancing in practice on their own gardens and had a lovely community day. It was an honour to remember the Veteran's who gave their all for our freedom today and a vast amount losing their lives for this cause.

We remembered them with a reading provided by Neil Jackson of which I read out to everyone.

We will all trully be grateful forever to them for their sacrifice.

Kind regards
John Broom





At this very difficult time of our lives, on behalf of The Dukeries Singers we would like to send our best wishes to every-one. We sincerely hope you have kept well in body and spirit and continue to do so.

The Choir last met to sing together 11 weeks ago on the 11th March and it seems eons ago. I'm sure we are all missing the friendship and companionship and fun we experience from being in such a supportive group of friends. We keep in touch by phone and have had a "Zoom" meeting which was good. Let's hope that life soon reverts to something like normal and we can all return to the activities we so enjoy.

You can find more about us on our Website: thedukeriessingers.com on Facebook and YouTube and our email address is thedukeriessingers@gmail.com

We SHALL resume activities and will have spaces for all voice parts, so if you would like to try us out or come and listen to us, when we restart rehearsals, we shall meet every Wednesday evening at 7-30pm until 9-00pm in the foyer of the Theatre at the Dukeries Academy in Ollerton. This is accessed via the main entrance and car park on Whinney Lane.

Optimistically looking forward.....Our Concert Secretary is Margaret on 01623 642464 or 07896491314. Let's hope we can soon begin rehearsal and performance plans.

Keep well, Jan

Parish Council wins grant for solar panels on Sherwood Fields pavilion

Edwinstowe Parish Council are very aware that Climate Change is having an adverse impact on the lives of our residents and our environment, we are committed to lowering our Parish Council's carbon footprint and we are encouraging other organisations to lower theirs. With this in mind the Parish Council have been working with Robin Hood Colts to look at ways to improve the carbon footprint of the John Benson Pavilion at Sherwood Fields; making it greener and lowering energy bills.

We have agreed to look for funding to have a solar panel and lithium battery installation that will generate all the energy needs of Robin Hood Colts and allow for electricity to be sold onto the electricity market. The project took a massive step forward in May when the Parish Council was awarded £20,000 from Newark and Sherwood District Council's Parish/Town Council Initiative Fund. The fund is aimed at supporting local 'green' initiatives.

The Parish Council have committed to using monies available from local housing developments, these monies are called Section 106 funds as a contribution to the project. Further funding is being sought from other sources and positive talks have already taken place with the Football Foundation, who part funded the building of the pavilion back in 2007.

Councillor Paul Peacock who has led on the project commented, "It's great news and I'm really pleased that the District Council can support this project. We have some way to go in terms of funding, but in my experience once substantial amounts are in place other funders are more willing to invest. It's good news for the Colts, good news for the Parish Council and good news for our environment."



D.W CONSTRUCTION

Local Builder & Bricklayer

PROFESSIONAL, AFFORDABLE, RELIABLE
SERVICE

New Conservatories, Conservatory Renovations,
Garage Conversions, Single Story Extensions, Porches,
Boundary Walls, Re-roofs, Chimney & Roof Repairs,
Lintels, Insurance Work & Much More...

Visit: www.dwconstruction.co.uk

Call Now for FREE Quote: 07952093143 or 01623 847267

EGMANTON PLANT HIRE

For a full list of hire equipment please see:

www.egmantonplanthire.co.uk

ANDREW BANKS

Phone/Fax: 01777 872316

Mobile: 07971 627588

VAT registered

Please see our website for current price list

PETER WARD SOLICITOR

TURNER ATKINSON & WARD SOLICITORS

23, HIGH STREET EDWINSTOWE NOTTS NG21 9QP

TURNER ATKINSON & WARD OFFER
A FULL RANGE OF CONVEYANCING
SERVICES, PREPARATION OF WILLS,
AND ADVICE AS TO PROBATE

APPOINTMENTS ARE AVAILABLE AT
SHORT NOTICE AND HOME VISITS ARE
MADE UPON REQUEST

TEL 823450

FAX 823456

WE ARE AUTHORISED AND REGULATED BY THE
SOLICITORS REGULATION AUTHORITY
REGISTRATION NUMBER 101320

Ok Blinds

Affordable Stylish & Quality Blinds Made To Measure

07555618555

Find us on
Facebook

Edwinstowe, Notts

Verticals Venetians Wooden Pleated
Romans Rollers

D.A Williams

Electrical Contractor

REWIRES, SHOWERS, INTRUDER ALARMS
SECURITY LIGHTING
& GENERAL ELECTRICAL WORK UNDERTAKEN

TEL: 01623 836517
07719999781

The ROCAS Green Project

I've rented an allotment site from the Parish council for the last umpteen years and so have acquired a certain expertise in the cultivation of several plants of interest to the vegetable growing community. Would that be cabbages, broad beans or maybe carrots, you ask?

I'm afraid not. What I am unintentionally good at is the cultivation of weeds. (Ask anyone.)

The attention most gardeners give to weeds is a kind of inverse square law. The harder they are to eradicate the more consideration they give them, but unlike the "scorched earth" weeders, I have developed a sneaking respect for plants that manage to survive, despite the attention of spade and hoe and against all the odds. It is therefore with a great deal of interest that I see that the western edge of the Communal Plot has a range of weeds (I think we can call them wildflowers now they are not actually threatening my broccoli...) that is remarkable considering the limitations of the habitat. Marked on older maps as a Lane, it no longer goes anywhere, being fenced off at the Naishes Field end, but the species present here are typical of good, old-fashioned hedge bottoms - plus a few garden escapes. I have yet to find any great rarities, but the list, expanding all the time as the seasons progress, includes some which are locally uncommon and worth protecting.

With a little light management, to include limiting the spread of Ivy, replacing the boundary ditch and bank and the much-needed addition of brush piles and a shallow pond, the biodiversity of the area could be greatly enhanced. What once was a dump of asbestos sheets, and other waste could become a valuable haven for wildlife, compensating in a small way for the inevitable habitat losses caused by housing developments in the village.

Species already known to visit the site include:-

Mammals: Fox, Mole, Wood Mouse, Short tailed field vole, Grey Squirrel, next door's cat.

Birds: Robin, Great Tit, Blue Tit, Dunnock, Gold Finch, Green Finch, Pheasant, Blackbird, Jackdaw, Crow, Starling, Magpie, Skylark, Buzzard, Red Kite and, of course, Wood Pigeon, whole flights of Wood Pigeon!

Reptiles: Common Viviparous Lizard. Notified to and recorded by the Amphibian and Reptile Conservation Trust. This is a Protected Species (Wildlife and Countryside Act 1981) and a Priority Species under the UK Post-2010 Biodiversity Framework.)

Amphibians: European Common Frog.

Arthropods: Numerous. See species lists prepared by ROCAS.*

Plant Species: (See additional ROCAS lists and photographs.)

Hawthorn, Elderberry, Bramble, Green Alkanet, Greater Celandine, Lesser Celandine, Red Campion, Snowdrop, Chervil, Hedge Parsley, Knapweed, Mallow, Violet, Wood Avens, Stinging Nettle, Lesser Nettle, etc....

For more information about the allotments, ROCAS and related matters don't call me, call our Chairman Adam Murphy.

*Species lists and illustrated plant and animal profiles are a work in progress and will be posted on the ROCAS website in due course. New species and comments will be added as they appear. - AJL



**NEWARK
BOOK
FESTIVAL**
on Tour

EDWINSTOWE

9.30am - 4.00pm

Saturday 19th September 2020



**Join us on tour as we
bring a mini Festival
to Edwinstowe for
the day!**

**Stalls, music, book swaps, authors, trails,
storytelling, crafts, workshops, author
events, talks and more.**



**Follow us on social media or join
the mailing list on our website to
keep up to date with the full
programme.**



Visit www.newarkbookfestival.org.uk
hello@newarkbookfestival.org.uk



NEWARK
BOOK
FESTIVAL
ON TOUR



Edwinstowe 19th Sept 2020

Newark Book Festival is delighted to announce that we have been asked to go on tour and will be visiting Edwinstowe on Saturday 19th September 2020, bringing a programme of events, authors, walks, stalls, Storytelling and more to Edwinstowe for the day!

The festival is now in its fourth year and we are looking forward to working with everyone to create a mini book festival for all your residents and visitors to enjoy. Our authors are excited to come on tour, and turn the day into a real celebration, with books at the heart of everything we do.

During the day we would like to celebrate our theme for 2020...

'A Festival Through the Ages' celebrating culture and creativity over the years including Nottinghamshire's literary and heritage stories.

We will be decorating the village, creating a festival trail map and dropping off books for people to find.

But we need you to take part too! As part of the celebration we would be delighted if you could get involved by inviting you to create fabulous window display's based on our theme of village fetes throughout time or a book theme and hide a picture of our new mascot Barry the Bookworm in your display!

We will produce sheets that children and families can pick up from the Festival Stall to come and find where all the Barry's are hidden too.



Best Dressed Window Competition

There will be a prize for the 'best window' and for anyone who completes the trail and finds Barry in your wonderful displays.

We cannot wait to work with everyone, please get in touch if you have any questions...

Newark Book Festival Manager clairrobshaw@outlook.com

Visit our website newarkbookfestival.org.uk



Sherwood Grange is surrounded by extensive grounds and patio areas with a range of tables and chairs where residents may sit out in the warm weather. The perimeter to the garden areas is enclosed allowing those residents who suffer from Dementia to be able to wander outside safely.

The main entrance to the Home opens into a small foyer. The corridors have grab rails fitted to assist residents and are generally of a good width allowing unimpeded wheelchair access. The combination of carpeting, wall lighting and pictures help to give a homely atmosphere to the building.

Top quality food is prepared on the premises under the careful supervision of our head Chef. Fresh local produce is delivered daily. Service users can choose their meals from our varied and tempting menus which are distributed daily to ensure individual choices can be met. All tastes and special dietary requirements are easily catered for. Visitors are welcome to join relatives for a meal or snack.

Bedrooms have been tastefully decorated Residents may wish to choose their own décor or partially furnish their bedroom with their own belongings. This is both welcomed and encouraged to enhance the informal and home-like atmosphere of the home whilst promoting familiarity and belonging. All bedrooms and en suites are fitted with a call aid system.

The home is equipped with a Fire Alarm System and all staff receives regular fire awareness training and fire drills are carried out weekly. "Monitored Dosage System" has been recently employed to safeguard best practice in relation to the storage and administration of medication.



Inspected and rated

Good

Regulated by



Sherwood Grange Care Centre, Mansfield Road,
Edwinstowe, Mansfield, Nottinghamshire, NG21 9HF

CQC inspection area ratings
(Latest report published on 24 September 2019)

Safe	Good ●
Effective	Good ●
Caring	Good ●
Responsive	Good ●
Well-led	Good ●

Telephone: 01623 824054 . Email: manager@sherwoodgrange.co.uk

Sherwood Grange Care Centre is registered with the Nottinghamshire Health Authority and Social Services

St Mary's Church help residents in the greatest need

The people of Edwinstowe have rallied together in a remarkable fashion to help their fellow residents during the Coronavirus crisis. Our early efforts were focussed on collecting food, with King Edwin School leading the way. But we were soon faced with unprecedented challenges: how to organise emergency food provision without spreading the virus? Our response to this was a shopping service staffed by a remarkable network of volunteers. But then, what about those who lacked the means to buy shopping? Mercifully, we had the means: some incredible individual donors stepped forward and we were also successful in applying for funding from various sources.

After testing out various solutions Councillors Karen Peck, Paul Peacock and I opted to direct the grants and donations we had received to Ollerton's Community Action Response (CAR) project at Life Spring Church. When we had our initial discussions with CAR at the end of March they were struggling to find any food in the supermarkets to fill their hampers with. But it quickly became obvious that cooperation between the groups was the best way forward: CAR would collect the food and pack it up, and our fabulous volunteers would distribute the hampers.

The result? Dozens of food hampers going to Edwinstowe residents who needed a bit of help in the midst of a crisis. This barely tells the tale of the countless Zoom meetings, WhatsApp messages, incredible generosity, huge goodwill and tireless energy which have made this possible. The help is still there - don't hesitate to get in touch if you need it. Rev. Ian.



St Mary's Edwinstowe

The Churches of Sherwood Forest
Love at the heart of life



WOODHEAD
FUNERALS

empathetic • considerate • respectful
A Compassionate and Caring Service

Continuing to serve Edwinstowe and the surrounding area with our Funeral Services since 1946 and with roots in funeral undertaking dating back as far as the mid 1800's

Contact — Melanie Bainbridge

Office: 01623 871101 or
Mobile: 07817 120487

Please ask us about our pre-payment funeral plans



Perfect Choice
FUNERAL PLANS

Foot Care In Your Own Home

Laura Leivers MAFHP MCFHP

Mobile Foot Health Practitioner



07540 798 161

- Routine Foot Care
- Fungal Nail Infections
- Corns & Callus
- Diabetic Foot Care
- Thickened Toe Nails
- Foot Pain
- Ingrowing Toe Nails
- Specialist Advice

Fully qualified and insured professional

15% OFF

Your First Treatment

www.nottsfoothealth.co.uk

THE TYRE SHOP

New & Quality Part Worn Tyres
Wheel Balancing
Wheel Alignment

Unit 17 Beacon Court
New Ollerton
Nottinghamshire, NG22 9QL

Tel. James:
01623 836306

Mobile:
07866507083



theyreshopollerton.co.uk



WHAT GOES ON HERE AT THE ABBEY ROAD COMMUNITY CENTRE

Monday Emily's Friendship Group	Starting at 10.00am
Monday Evening Evergreen Club - Social/Bingo	Starting at 5.00pm
Tuesday Afternoon Emily's Exercise Class	Starting at 1.00pm
Wednesday Evening Evergreen Club - Dominoes/Bingo	Starting at 4.00pm
Friday Afternoon Abbey Road - Art/Craft Group	Starting at 1.00pm
Friday Evening Evergreen Club - Social/Bingo	Starting at 5.00pm

Keep this number handy to contact your

LOCAL ELECTRICIAN

Call Chris: (01623) 368 603

We will do the small jobs, and turn up when we say we will!

Edwinstowe Parish Council

Councillors Can Be Contacted Via The Parish Council Office

Edwinstowe Parish Council

Working to make a difference

Tel: (01623) 824243

info@edwinstowe.co.uk

theclerk@edwinstowe.co.uk

www.edwinstowe.co.uk

The Parish Council is OPEN TO THE PUBLIC on

Mon..... 10.00am - 2.00pm

Tues..... 10.00am - 2.00pm

Weds..... 10.00am - 2.00pm

Thur..... 10.00am - 2.00pm

Fri..... 10.00am - 12.00pm

Clerk - **James Gamble**

Administrator - **Beverley Whitworth**

Mark Spencer MP

Parliamentary,
House of Commons,
London, SW1A 0AA

www.markspencermp.com
Social media: @mark_spencer

T: 020 7219 7143 / 0115 9681 186
Email: mark.spencer.mp@parliament.uk

Constituency - Sherwood Constituency Office
Room 3, under One Roof, 3A Vine Terrace,
Hucknall, Nottingham,
NG15 7HN

County Councillor John Peck,

T: 07748181719

E: cllr.john.peck@nottscc.gov.uk



Cllr Celia Brooks
Chairman



Cllr John Peck
& County Councillor



Cllr Adam Murphy



Cllr Chris Ayre



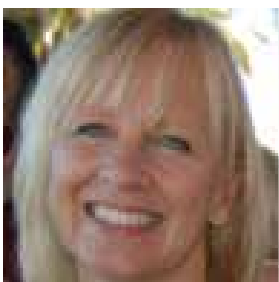
Cllr Michael Brown
& District Councillor



Cllr Scott Carlton
& District Councillor



Cllr Paul Peacock
& District Councillor



Cllr Karen Peck



Cllr Andy Freeman



Cllr Alison Troop



Cllr Rob Rodgers

LOCAL SERVICES & GROUPS DIRECTORY

Local (01623) number applies unless otherwise stated

IF YOU WOULD LIKE TO ADD YOUR GROUP TO OUR DIRECTORY LIST

Helpful Numbers

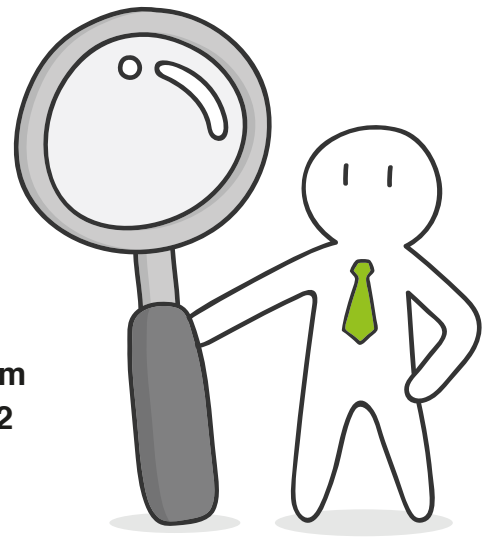
Parish Council Office - **824243**
Newark & Sherwood District Council - **01636 650000**
Nottinghamshire County Council - **0300 5008080**
Citizens Advice Bureau - **0344 411 1444**
Major Oak Medical Practice - **822303**
Edwinstowe Library - **822280**
Sherwood Forest Trust - **821490**
Sherwood Forest Visitors Centre - **823202**
The Village Hall - **07594 460846**

Please contact
The Parish Council Office on 824243
or email: info@edwinstowe.co.uk
/ theclerk@edwinstowe.co.uk

Local Groups

Evergreen Club - **07775 902912**
Edwinstowe Historical Society - **822264**
Edwinstowe Hospice Support Group - **822070**
Edwinstowe Leisure Painters - **01777 870588**
Edwinstowe's Helping Hands - **07800 803728**
Major Oak Pop Choir - **07450 316756**
Dukeries Singers - **642464**
Abbey Road Art & Craft Group - **822534**
Royal British Legion - **824787**
Dukeries Tai Chi Society - **822827**
Lynds Close Luncheon Club - **07800 803728**
Sherwood Forest Probus Club - **822256**
Abbey Road Whist Drive - **822374**
Edwinstowe Youth Club - **07960 481488**
Royal Oak Court Allotment Association - **roc.allotment@gmail.com**
Robin Hood Colts Football Club - **07921 250583** and **07772 908542**
Edwinstowe Handbell Ringers - **01623 822326**

1st Edwinstowe Guides Group - **823165**
1st Edwinstowe Beaver Scouts - **823761**
1st Edwinstowe Brownies - **07716 818327**
1st Edwinstowe Scouts Group - **07511 363328**
2nd Edwinstowe Brownies - **824782**



Schools

St Mary's Church Of England Primary School - **822518**
King Edwin Primary School - **822111**
Dukeries Academy - **860545**

Churches

St Mary's Church Office - **822430**
St Mary's Church Rooms - **07840 435796**
Methodist Church - **825469**

Nurseries

Bright Beginnings Day Nursery - **822440**



CONTACT The Parish Council

on **01623 824243**

or email: **info@edwinstowe.co.uk**

Business card sized advert - £25

1/4 page advert - £50

1/2 page advert - £75

Full page advert - £100

Inside front or back cover - full page - £200

Outside back cover / full page - £225



EDWINSTOWE VILLAGE NEWS EDITORIAL TEAM

Cllr John Peck, Cllr Karen Peck, James Gamble

COMMENTS

Please email your comments to:

info@edwinstowe.co.uk or drop this form in at The Village Hall.

.....

.....

.....

.....

.....

.....

.....

.....

If you would like to submit an article or an advert for the next issue email us at: info@edwinstowe.co.uk



CARPET Bargain Centre

Unbeatable Value All Year Round!



Carpets From £3.99m²

Quality, Value & Service

From Your Local, Friendly Family Run Store
Call Today To Arrange A Free Quotation

Tel: **01623 869500**

Ollerton 3 Central Buildings, Sherwood Drive, New Ollerton. NG22 9PP
Warsop 11 Sherwood Street, Warsop. NG20 0JP
Blidworth 83-85 Mansfield Road, Blidworth. NG21 0RB



*The Latest Rugs
& Runners In Stock*



Vinyls From £4.99m²



*Mattresses & Bed
Sets From £89.00*

Why Choose Us ?

- Over 30,000m² Of Top Quality Flooring In Stock & Available For Immediate Delivery
- Measuring, Estimating & Home Selection Service
- Underlay, Gripper & All Accessories Stocked
 - Friendly & Professional Fitting Service
- Moving & Replacing Of Furniture As Part Of Our Diamond Service
- Uplift & Disposal Of Old Flooring As Part Of Our Diamond Service



*Laminate Flooring
From £8.99m²*

Find Us On **facebook** "Like Us" To Receive Special Offers, Discounts, Promotions & Check Out Our Fantastic 5 Star Reviews !