

EDWINSTOWE VILLAGE

NEWS

Nov 2012 - www.edwinstowe.co.uk - edwinstowe.pc@btconnect.com - 01623 824243

SHOCK NEWS WELFARE CLOSED

Many Edwinstowe residents will be shocked to hear the news that Thoresby Miners' Welfare closed its doors for the last time on 14th October.

The Welfare, in its central position on "the Avenues" was at the heart of Edwinstowe's social life for so much of the last century and older residents will remember all the dances and social events which were held there. The other Welfare was demolished and replaced by the Nightingale Nursing Home some years ago.

The present management have made valiant efforts to revive the Welfare's fortunes and only a few months ago a team of enthusiastic volunteers could be seen working hard, giving the building a makeover inside.

However, the Trustees took a recent decision that the Welfare was no longer financially viable and voted to close it. Parish Councillors expressed dismay at their recent meeting. A discussion with a CISWO official revealed there would be no going back on the decision and they were looking to demolish the building as soon as possible to prevent the sort of vandalism that happened after the Ollerton Welfare closed. An assurance was given that the sporting clubs would be safe.

The closure of the Welfare means Edwinstowe will lose its largest venue. The Village Hall and Church Room

are smaller and only King Edwin School has a hall which comes close in size, but no stage. In recent years, Edwinstowe has lost the leisure centre, Rufford School and the youth club. It will be hard for groups who used the Welfare to find a new venue as the Village Hall is mostly fully booked.

The Thoresby Colliery Band have at least found a new home: they are now based at the National Trust's Clumber Park. We understand they will retain their historic name to retain the link with Edwinstowe.

At the time of writing, we don't know what the plans for the Welfare site are. Your County Councillor, John Peck, has asked for urgent talks with the County Council to suggest the building could be used for young people's provision.

However, it seems any last ditch attempt to save the Welfare maybe in vain, but Councillors will press that any development on the site must be appropriate, must take account of local residents and there must be some benefit to Edwinstowe.



A.W. LYMN

The Family Funeral Service

*Manvers House
Sherwood Drive
Ollerton
NG22 9PP
01623 860 045*

Branch Manager: David Summers



24 hour personal service
Pre-paid funeral plans
Rolls-Royce and Bentley fleet
Chapel of rest and car parking at all of our locations
Finance terms available



Quality at affordable prices
please call to arrange a free,
no obligation, quotation or home visit.



MANSFIELD

Standard House
16 Chesterfield Road South
01623 622 116

MANSFIELD WOODHOUSE

The Old Farm
2 Welbeck Road
01623 623 765

SHIREBROOK

Shirebrook Funeral Service
32-34 Patchwork Row
01623 742 813

Owned and personally managed by the Lymn Rose family since 1907

www.lymn.co.uk

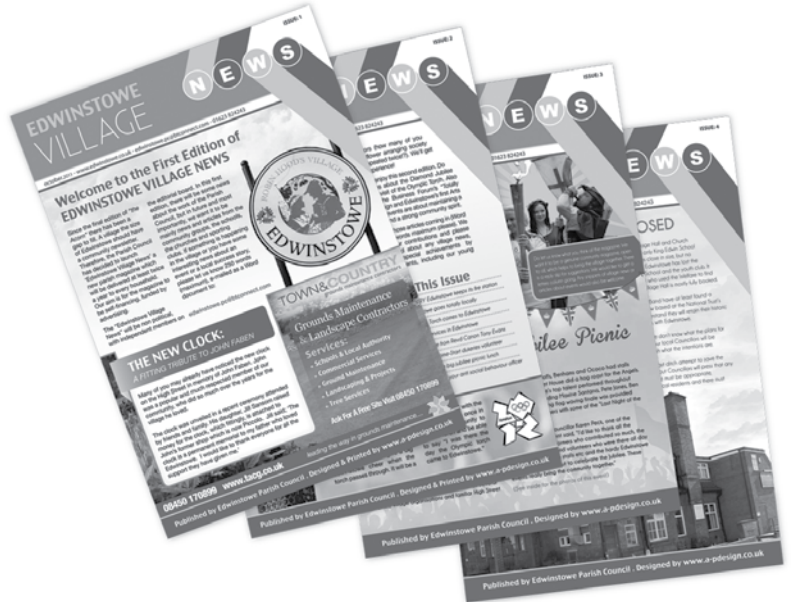
"Our family serving your family"

Welcome Readers

to the fourth issue of the Edwinstowe Village News

Welcome to our fourth edition of the Parish magazine "Edwinstowe Village News." As usual, you will find a wide variety of articles submitted by many of the varied clubs, community groups, churches and schools in Edwinstowe. Also the local news and notices of events, to keep you up to date with what is happening in the village.

An important date for your diary is the annual switching on of Edwinstowe's Christmas Lights. This will be from 5pm until 8pm on Thursday 29th November. Please note the slightly later than usual starting time of 5pm. We hope to see you there!



The event and lights are organised by the Parish Council Events Committee who work very hard to make it a success. What can't be organised is the weather- rain last year and snow the year before. Perhaps 2012 will be a better year weather-wise. As usual, there will be lots to keep everyone entertained and it would be great to see everyone turn out in big numbers to enjoy a real community event- it's always a great Christmas atmosphere.

Thursday 29th November 5pm until 8pm

**PETER WARD
SOLICITOR**

TURNER ATKINSON & WARD
SOLICITORS

23, HIGH STREET EDWINSTOWE NOTTS NG21 9QP

TEL 823450

FAX 823456

**TURNER ATKINSON & WARD OFFER
A FULL RANGE OF CONVEYANCING
SERVICES, PREPARATION OF WILLS,
AND ADVICE AS TO PROBATE**

**APPOINTMENTS ARE AVAILABLE AT
SHORT NOTICE AND HOME VISITS ARE
MADE UPON REQUEST**

**WE ARE AUTHORISED AND REGULATED BY THE
SOLICITORS REGULATION AUTHORITY
REGISTRATION NUMBER 101320**

Announcement due about the New Visitor Centre

At the time of going to press we do not know the details about the new Visitor Centre. We understand the County Council will make a public announcement on 30th October.

Edwinstowe residents will be very interested in this announcement as the new Centre will be on the edge of the village on the fields opposite the cricket pitch.

The County Council have to close the present Visitor Centre site as English Nature intend to restore that part of Sherwood Forest.

Whatever form the new proposal takes, we hope there will be a real economic benefit and jobs for the village. There will also need to be consideration given to the traffic management on Swinecote Road and disturbance to local residents.

CARPET Bargain Centre

We've Got Floors Covered!



Save up to 75% on all Carpets Vinyls Laminate Floors

All Professionally Fitted At Unbeatable Prices!

We Can...

- Uplift Old Flooring
- Dispose Of Old Flooring
- Move & Replace Furniture

Come & See Us At...

The Shop, 3 Central Buildings, Sherwood Drive, New Ollerton, NG22 9PR. (Opposite the Co-Op)

The Warehouse, The Unit, Fairholme Park, A616 Wellow Road, Ollerton Village, NG22 9AP.

Telephone: **01623 869500**

Rugs in Stock

Free... Measuring & Estimates, Home Selection, Insurance Quotations.



S & E TIMBER



- SUMMER HOUSES
- DOG KENNELS
- WENDY HOUSES
- CHICKEN COOPS
- RABBIT HUTCHES

SINCE 1980

HEAVY DUTY BESPOKE SHEDS/KENNELS MADE TO MEASURE



- Heavy Duty Fence Panels
- Oriental Garden Features
- Garden Trellis

Skirting/Architrave

- Handrails • Dado Rail
- Door Casings • Shiplap

Heavy Duty Fence Panels, Concrete Posts & Plinths

All Planed and Rough Sawn Timbers

SLEEPERS!

– New & Reclaimed

Natural Sandstone Paving –
Patio Packs from £17.50sq/m

Decking Kits

10' x 10' – £170

12' x 12' – £250

- Matchboard • Floorboards
- T & G Cladding • Loft Insulation • Beading

- Wide Range of Plywood • Chipboard
- Eliotis • Plaster Board • M.D.F.

UNIT 45, TRENT ROAD, BOUGHTON INDUSTRIAL ESTATE SOUTH

Telephone: 01623 861364

OPEN:- 8am – 5pm Mon-Fri; 8am – 3pm Saturdays

Stockists of PICNIC TABLES & GARDEN BENCHES

..... www.sandetimber.co.uk

The Ladies Probus Club of Sherwood Forest

What's in a name? Probus stands for Professional & Business, and this organisation is aimed at retired and semi-retired women who have had careers. Probus fosters friendship and fellowship, and is an ideal organisation in which to meet people, make new friends, enjoy visiting speakers and have a chat with like-minded people over lunch.

Ladies Probus meets every third Thursday in the month at the Forest Lodge Hotel in Edwinstowe. There is a presentation from a Visiting Speaker, lunch, and then Group Business. The atmosphere is friendly and informal, and the speakers both entertaining and informative.

Twice a year the group eats out to celebrate birthdays and Christmas, and every year a charity is decided upon and donated to.

Come along one Thursday and join us for a chat and lunch. There is no compunction to join but, should you decide to, the annual subscription is a mere £12 - very good value for a chance to get out of the house, meet new people and have a good time!

Please visit us soon - you'll be made very welcome!
Ring Mansfield

(01623) 490190

for more details.

.....

Nottinghamshire County Council's new Autumn and Winter Guide for events

from October to March 2013 is out now

In the current challenging economic climate, many of the events which take place in Nottinghamshire's country parks, libraries and other venues are free, or providing good value for money.

For people locally, there is much to offer at both Rufford Abbey County Park and Sherwood Forest National Nature Reserve this autumn and in the run-up to the festive season.

The published guide is available at a range of outlets across the county including libraries, schools, leisure centres and tourist information centres.

These and many other events are also listed on Nottinghamshire County Council's What's On listings online.

Check out the council's website:

www.nottinghamshire.gov.uk/whatson

to find out more about what is on.

Royal British Legion

At the annual general meeting of the Warsop, Meden Vale and District branch of the Royal British Legion I was asked if I would take on the mantle of the Edwinstowe's representative, for the legion, (Edwinstowe branch are now part of the above Branch) which holds meetings every second Monday of the Month at the Memorial Club Church Warsop. from 19-30 on all are welcome.

I was honoured to do so, the launch of the Poppy Appeal will commence on the 27th of October with an open house at the Tudor Barn Church Warsop. from 10 am to 12 noon free teas and coffees available, the members will be there to answer any questions you may have about help from the legion. Poppy Boxes will be distributed around the village shops and Pubs on the 25/10/2012. Please give generously.

Yours Aye Dave.

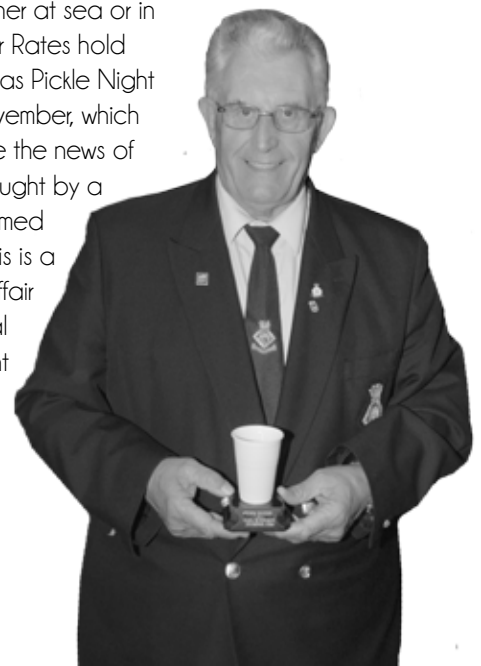
Trafalgar Day Oct 21st

207 years ago, one of the most historic Maritime battles was fought off Cape Trafalgar between the English fleet and the combined fleets of the French and Spanish by 1630 of that day, we had won a great and glorious victory, but had lost the Royal Navy's greatest Admiral, namely Admiral Lord Horatio Nelson, his famous signal is as evocative today as it was then "England expects that every man will do his duty"

On the 21st of October Sea Cadet units from around the country will parade through selected towns, this year there will be a parade through streets of Mansfield from the Civic centre through town to St Peter and St Pauls Royal Naval Associations will celebrate the event by holding a Trafalgar night dinner, on the Day.

The Royal Navy will hold a wreath laying ceremony on board HMS Victory at Portsmouth, and Officers will hold a dinner whether at sea or in harbour, senior Rates hold what is known as Pickle Night which is in November, which is to celebrate the news of the battle brought by a fast frigate named HMS Pickle. This is a much lighter affair than the formal Trafalgar Night Dinner.

Dave



Major Oak Medical Practice

We are delighted to welcome our new permanent male GP, Dr J Calinas, to the practice. He will start with us from the beginning of October 2012. Dr Calinas has a wealth of experience and will be a real asset to the practice and our patients.

Following discussions and planning with our Patient Participation Group, in July 2012 the practice started a nurse triage system for all emergency requests for appointments. To prepare for this Nurse Sarah attended training sessions with the Out of Hours service and other practices that have successfully done this already. This means when you call for an emergency appointment you will initially speak to our trained nurse who will ask you about your symptoms and book you in with the most appropriate clinician either the doctor or nurse. This has proved to be an extremely successful service and it has vastly reduced the wait for appointment booking with a GP down to a couple of working days.

Our Patient Participation Group is holding a Christmas Fayre on Saturday 1st December 10am to 1pm to raise funding for waiting room improvements. Entrance fee will be 30p, there will be a raffle, guess the weight competition and a variety of stalls selling items such as Bric-a-brac, cakes, toys, etc. Refreshments will be available.

Please visit our surgery website for news and surveys, the address is: www.majoroakmedicalpractice.co.uk

Edwinstowe Art Class News

Members from Edwinstowe and Ossington artists' groups enjoyed a brilliant outing visiting Brimham Rocks park and Skipton in West Yorkshire.

The weather was kind and everyone was fascinated by the fantastic natural rock formations, which have inspired painters and sculptors for centuries. Some of us visited Skipton Castle and enjoyed a pint in some of the many pubs in town.

Edwinstowe Art Class are hoping to stage a Spring Exhibition in April/May 2013 at Edwinstowe Village Hall. more to follow on this event soon. We are always willing to welcome new members to our Monday art class at 2.00-4.00pm.cost of £5.00/class with tea and biscuits.

Contact Graham Laughton 01777870588 for more info. also look at web. grahamlaughton.com.

Drawing and painting buildings is the next demo feature for October.

RightClick

ALL YOUR COMPUTER NEEDS



LAPTOP UPGRADES & REPAIRS CUSTOM BUILT PC'S
INKS & PAPER PRINTERS DVD & CD'S DATA RECOVERY
VIRUS REMOVALS & HEALTH CHECKS HOME VISITS
2ND USER SYSTEMS AVAILABLE
WIRELESS NETWORKS

Call today! 01623 825525 . 0790487842
Edwinstowe Highstreet, Old Library

The Dukeries Singers

We are well into our Autumn term of rehearsals and events and the Christmas music has been added to our folders. At the time of writing we have already performed a concert at The Dukeries Riding Stables which was a great success and a lovely place to sing.

We have a busy time ahead of us, which is good as we love to perform and we have some new venues at which to sing. Our programmeso far is;

Hallcroft Methodist Church-Retford

Friday 23rd November 2012 @7.30pm

St Nicholas Church-Tuxford

Saturday 1 December 2012 @7.00pm

Hospice Christmas Concert-Tudor Barn

Tuesday 4 December 2012 (TIME TO BE CONFIRMED)

Civic Carol Concert-Kelham Hall

Wednesday 5 December 2012 @5.30pm

St. Andrews Church-Eakring

Saturday 8 December 2012 (TIME TO BE CONFIRMED)

Edwinstowe Village Hall

Saturday 15 December @7.00pm

Tickets for the Edwinstowe Concert may be available.

Our contact number for any enquiries, as usual is our Chairman Alan Sinclair on 01623 823271

The Dukeries Singers would like to wish you all A Very Happy Christmas and a Healthy and Peaceful Year to follow

The Lingerie Lounge

Exquisite Lingerie

Formally of Edwinstowe, we have moved to:
The Forest Centre - Forest Rd - Ollerton NG22 9PT

Call: 01623 835 256

Back sizes 29-44 Cup sizes A-K

Clubs to suit every one's interests at King Edwin

We have started back this year with yet another wide range of after school clubs for children of all ages.

Children have a choice ranging from yoga, to scrabble, and to Choir. All children are encouraged to join something as part of our wider extra curricular education, other clubs include dance chess and book club.



BIRTHDAY PARTIES...ANNIVERSARIES...WEDDINGS...PRIVATE PARTIES
"We can put together a combination of services to suit YOU"
A wonderful range of activities for all the family!



Circus Workshops
Face Panting
Balloon Modelling
Stilt Walking
Clowns
Musical Games
Parachute Games
Mascot Costumes

Working in any area. Providing services to suit every venue and any amount of children from 5 to 50 or more.

**Your local Party Entertainers-
based in Edwinstowe!**

THE JOKER ENTERTAINMENT



Tel: 07961 884 973
martin@the-joker.co.uk
www.the-joker.co.uk

Fully CRB checked with
Public Liability Insurance

Our Village PCSO Has A New Base

Our Police Community Support Officer, PCSO Danny Childs, is now based in the Parish Rooms in the Village Hall. This gives him a permanent base in the centre of the village. He obviously won't be there most of the time but he will be dropping in to pick up messages. If you want to leave any message about any issue, you can either drop a note in or ring the Parish Clerk, Alice Dunn, who will pass the message on.



Edwinstowe Pre-School Playgroup

Did you know that you, as a parent/carer you are entitled to 15 hours Free childcare per week of government funding, (children aged 3-5 year old). This can be used in our OFSTED "Outstanding" and award winning Pre-School Playgroup and Forest sessions.

Edwinstowe Pre-school playgroup is a registered charity and has been running for over 40 years in the heart of your community. We have grown from strength to strength and provide excellent pre-school education opportunities for your children. We hold

Playgroup sessions on a Monday, Wednesday and Thursday in the Village Hall for children aged 2 ½ up to 5 years old. These are the perfect start to your child's educational journey.

We also hold our multi award winning Forest sessions. These are a unique opportunity for your child as no-one else locally offers this. We are able to give your child the chance to explore safely the wider world and to use their imagination in child led play. These unique sessions are based in the St Johns hut at Forest corner on Tuesdays and Fridays and we are now able to offer morning and afternoon sessions.



If your child is not old enough yet for our playgroup or Forest sessions. Don't worry, you can come along to our friendly "Stay and Play" Toddler sessions on Tuesday's and Friday's in the Village Hall. These are great for newborn to 2 ½ and you can relax, chat and socialise with other parents/carers in a child friendly environment.

For more information contact us on

07989 892831



**WOW...15 Hours FREE
childcare per week!!!**

Parking On The Pavements

Local Councillors receive regular complaints from disabled people on mobility scooters and parents with children in buggies, that they have been forced to go on to the road to get round cars which have been parked fully on the pavement, leaving hardly any room for pedestrians.

The complaints mainly relate to First Avenue, Fifth Avenue and Mansfield Road. Would people who use the pavement as a car park (and we are talking about the whole car, not a couple of wheels) please stop and show consideration to pedestrians, particularly the disabled. The matter has been raised with the police.



Sherwood on the airwaves!

The beautiful village of Edwinstowe lies at the heart of the remnants of medieval Sherwood Forest. There are less than 500 ancient oak trees left in the National Nature reserve. To be classed as ancient, an oak tree must be at least 500 years old, and some of ours are around 1000 years old. This means that they were small saplings when the Vikings were invading and settling the area. All mind blowing facts, and it's always good to hear interesting news about the area.

During the Spring of 2012 The Sherwood Forest Trust initiated the 'Sherwood Bulletin' which is broadcast live on the BBC Radio Nottingham Richard Spurr Show once every two months. The next Sherwood Bulletin will be on December 4th between 2 and 3pm. The Sherwood Forest Trust, who are based in Church Farm Business centre (the old craft centre), believe that by raising the profile of the entire area, promoting events and supporting local communities, that this will make a difference to the rural economy, to peoples knowledge of this fascinating land, and ultimately to the land itself, protecting the rare and ancient habitats and its spectacular wildlife.

For more information we have a wonderful website www.sherwoodforest.org.uk and a great facebook page [facebook.com/sherwoodforesttrust](https://www.facebook.com/sherwoodforesttrust).



Peter Borrowdale

P&A Masonry Services

202 Mansfield Road
Worksop Notts S80 3AB

MEMORIAL SPECIALISTS

Tel/Fax: 01909 473239 :-07890 589147
E-mail: peterborrowdale@yahoo.co.uk

A family business for over 110 years
Memorials-Lettering-Renovations

March 10th 1863 The Prince of Wales Marriage

A subscription was made through this township amounting to £34, with this the whole of the working classes were entertained.

All the men, who were not feasted elsewhere by their own masters, had a dinner of Roast Beef & Plum Pudding. All the women (about 180) had a meat tea and all the children (about 300) had tea & cake. A band and good fireworks were provided.

(I wonder what they thought of separating husbands and wives and treating them differently but I have noticed that it was common practice to feed the men better than the women.

Margaret Woodhead

Nightingale Care Home

Nightingale care home in Edwinstowe would like to thank every one who attended the open day on Wednesday 26th September 2012. People commented on the good workmanship of the new rooms and the extension and enjoyed chatting to staff and residents over tea and cakes. We will be holding more events in the future, below are just a few you have to look forward too.

Planned Events:

1st November 2012

Halloween fun afternoon from 4pm-6pm - ALL WELCOME

Includes apple bobbing, pie and pea tea, tombola stall, Prize for the best fancy dress

Future events:

12th December 2012

Christmas party - RESIDENTS AND RELATIVES ONLY

Abbey Road Craft Group

After all the festivities of the Diamond Jubilee, Olympic Games and Para Olympic Games we settled down to make an early start making christmas cards, our members enjoy exchanging ideas and passing on tips to one another and enjoy the company.

We were well looked after by everyone at Rumbles Catering Project at Clipstone when we went as a group for lunch along with friends and family on the 10th of September and a good time was had by all.

Our Friday afternoon Art and Craft meetings are well attended at The Community Centre Abbey Road (1-4pm) should anyone wish to attend they would be made very welcome.

Barbara Freer

01623 825518

ABS Tiling and Plumbing

01623 822350 07771 794037

My team specialises in Bathroom and Wet Room installation. We can manage the project from the planning stage onwards, supply the stock or simply come in to fit your new suite and tiles.

You won't need to bother finding traders with the skills required to complete your bathroom, we have qualified craftsmen for planning, surveying, tiling, plastering, joinery, plumbing and electrical work.

We install level access Wet Rooms to NSDC approved standards for customers with mobility and access problems. We can also advise whether your wet room qualifies for full or partial exemption to VAT if you are disabled.

Of course we also install luxury high specification Wet Rooms at prices that can be significantly less than a bath/shower combination.

Traditional bathrooms are usually installed within 5 days and we never leave you without a loo!

Call now for first class service from a local business offering:

- Free quotation, planning and survey (regardless of the number of meetings needed)
- Installation costs are half those of leading DIY retailers
- Tiles and suites from leading suppliers charged to you at the trade prices available to me
- Removal of all waste at the end of every day
- You pay when the job is complete and you are completely satisfied
- Two year workmanship guarantee

I don't have a website I live in Edwinstowe! Come and see me at 20 High Street where I can show you examples of my work. I can come to if you call either of the numbers above.

Goff's *This Christmas*

Of Edwinstowe

goff's festive roast

Succulent Turkey breast with our own special forcemeat filling of sage & onion, apricots and home made sausage meat dressed with streaky bacon and herbs.

"a winner every Christmas" from £18

free range local turkeys

Superb birds from a local farmer, some bronze, some traditional white.

Not to be mistaken with mass farmed turkeys!!!

fresh meats

21 day minimum matured beef Sirloin, topside, rib roast for superb flavour and taste or try our boneless stuffed pork roast with cranberry & orange forcemeat.

game to eat

3 bird roast - boned Guinea fowl stuffed with Gressingham duck breast, pheasant and a seasonal stuffing wrapped in streaky bacon and herbs £19.50.

Locally shot Pheasant, Gressingham duck, Traditional Geese.

cooked to perfection

Goff's Festive roast ham - English slow roasted ham joint topped with Cranberry & fresh orange glaze individually prepared to our time honoured family recipe, cut to your requirements.

Hand Made pork pies, Turkey & Cranberry pie and more!

selection of artisan english cheeses.

"All you could wish for a fantastic Christmas meal from your village, pop in to discuss your requirements with our passionate team" or log on to our website or email for more info!

David+Kate
X

Goff's Butchers, 43 High Street Edwinstowe tel 01623 824598

email davidgoff@tiscali.co.uk website www.goffsbutchers.co.uk

News from Church Farm Business Centre

It's been quite a while since the units at Church Farm Business Centre have been fully occupied but it's now buzzing with new activity and there's something for everyone. . . .

The Cake Hole is the latest addition to the centre. Run by Lynne and Bob you're assured a warm welcome and the chance to treat yourself to a delicious cake or lunch from the 'build your own sandwich' menu. Their homemade range includes diabetic and gluten free. Tea and coffee is also available so why not pop in and say hello.

Sherwood Forest Trust continues to develop partnerships with organisations and landowners across the Sherwood area to secure the future of the Forest. They recently supported the Robin Hood festival and are busy working on the next phase of funding applications for future projects.

Pat Dodds School of Sewing is getting ready for Christmas with a busy programme of workshops. Spend half or a full day in tranquil surroundings making handmade gifts or decorations for the festive season. Courses are designed to suit both beginners and experienced sewers. Course run right through until mid-December. www.patdodds.co.uk

Locke's Chocolates are meticulously hand painting Santas, Snowmen and Christmas trees for what will be one of their busiest seasons. Next on the production line will be mini Christmas puddings which sound absolutely delicious. They also have plenty of stocking fillers if you're looking for ideas.

DT Collectable Toys are in residence and although not officially open for business, visitors are welcome. They deal in a variety of toys from tin plate and clockwork right through to modern day collectables. Well worth a visit.without the children!

St Marys Church Parish Office is open on Tuesdays and Thursdays 10-12pm where you'll always be met with a friendly smile.

SAY HELLO to Rev Louise Holliday

My name is Louise Holliday and on the 1st of July I was ordained deacon at Southwell Minster and along with my family moved into the area to serve as your curate here in Edwinstowe with Perlethorpe and Clipstone. My role includes leading services and supporting others in maintaining the life of St Mary's church as well as taking funerals and baptisms.

During the summer I have enjoyed getting to know the area and meeting many of you in and around the village. It is great to have the lovely forest on the doorstep and we are looking forward to exploring more of the cycle routes and fabulous walks.

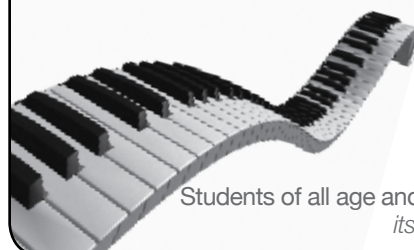
If you see me around the village please stop and introduce yourself, I'd like to learn more about the area and get to know you all.

Blessings,
Rev Louise Holliday



Music Tuition - Edwinstowe

Piano, Keyboard, Clarinet, Saxophone,
Recorder, Bassoon, Music Theory



Debbie Reilly B.E.d.
(Hons) L.T.C.L., A.L.C.M

TEL: 0774 679 4005

Students of all age and experience welcome -
its never too late to start!!

Established 21 Years

Pets Paradise

Edwinstowe High Street (Next to the Doctor's Surgery)

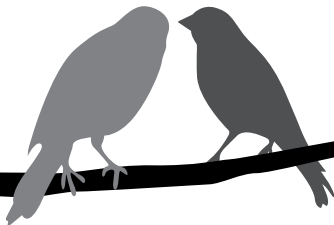
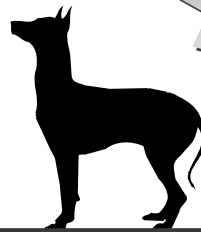


Suppliers of Pet Food for all pets

Cats & Dogs - Beds, Collars, Leads, Toys

Fish Supplies - Indoor & Outdoor

Bird Supplies - Domestic & Wild



We also supply bedding, food and cages for small domestic pets such as hamsters, guinea pigs and rabbits.



Visit the shop to see our full range of products!!



Garden Supplies
Seeds, Plants, Tools

DIY Supplies

Emulsion & Gloss Paint
Varnish, Brushes,
Rollers, Tools



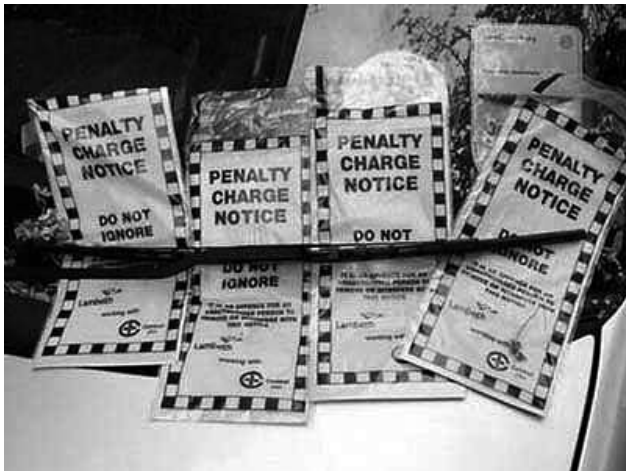
**Household cleaning
supplies**

Gas *Bottles*

Starting from

£16.00

PARKING FINES IN EDWINSTOWE CAR PARKS HAVE YOU BEEN CAUGHT OUT?



Two Edwinstowe residents were recently fined by over-zealous traffic wardens for parking outside the designated white lines in East Lane Car Park.

This was drawn to the attention of local councillor, John Peck. John contacted the car park manager at Newark and Sherwood District Council who own the car parks and pointed out there was no notice advising residents of parking restrictions and it was therefore illegal to fine anyone. The two residents, who were understandably annoyed, successfully challenged their fines.

Notices have now been installed in all Edwinstowe car parks, so people do need to make sure they park in a designated bay. However, John advises anyone who did get a ticket and who paid the fine, before the notices were put up, to make a retrospective challenge. You should be entitled to a refund.

Contact the Car Park Department on **01636 655720** or ring Coun. John Peck on **825313** if you would like further advice.



Royston has been making fine chocolates for **12 years**

Open Tuesday To Saturday 11am - 4.30pm
(MAY TO SEPTEMBER ONLY)

Studio 7-Church Farm Business Centre - Edwinstowe
Nottinghamshire - NG21 9NJ

Tel 07789 916006 Email: roy@lockes-chocolates.co.uk

Give hunger the boot WELLY WALK!



On Thursday 29th September, St Mary's school marched to St Mary's church in their wellingtons for an amazing charity, Farm Africa.

We all decorated paper wellingtons so St Mary's school council could make them into bunting to hang around St Mary's church. Every Class in St Mary's school did a presentation of what they did: Class 1 drew harvest fruits; Class 2 made baskets with fruits they drew in; Class 3 wrote poems of harvest; Class 4 read a reading and wrote prayers. We sung 3 harvest songs: Cauliflowers fluffy, the farmer comes to scatter the seed, When God made the garden of creation.

We raised £148.96 which means we can buy a camel for milk and travel and some gardening tools. Everyone tried to help as much as they can.

Everyone really enjoyed the harvest festival and we hope it helped Farm Africa!

By Pip Williams (school council secretary)

Edwinstowe Bowls Club

Just to say we had a successful competition last weekend when our sponsors Brian Hawkins and Ron Mapletoft were on hand to present the prizes for our open 4 woods pairs trophy. the 2012 season is now over but to refute comments made in last weeks "CHAD" our green is still in use and has been for over 70 years!

Although it is sad to witness the demise of the "Welfare" nevertheless we would welcome anyone, whether ex-miners or not interested in playing bowls. the club is financially sound but we cannot thrive without new members.

Anyone interested please contact Rod Sampson on **01623 822448** or write to 16 Greendale avenue Edwinstowe.



safer neighbourhoods

At the SNG last night I mentioned the 'fatal four' proactive operations that are ongoing in the Sherwood area at the moment specifically targeting speeding drivers, mobile phone use, not wearing seat belts and drink/drug driving in order to improve road safety.

As luck would have it a team came on duty this morning at Ollerton for this purpose and so I took the opportunity of mentioning the concerns raised about speeding drivers etc in Edwinstowe raised at the meeting last night. The team therefore took up positions on Mansfield Road, Edwinstowe between 0830-0930hrs and found that most drivers were complying with the speed limit but did issue one ticket for mobile phone use. The officers then went to Ollerton and other areas.

The team then revisited Edwinstowe between 1.30pm until 2.30pm and took up a position on Rufford Road.

The team issued 8 fixed penalty notices for speeding offences, and reported one driver for summons for travelling at 60mph in a 30mph zone.

One driver was also arrested for possession with intent to supply controlled drugs following the recovery of a quantity of cannabis.

I thought that you might like to know about this, and please feel free to share this with other interested parties who may or may not have attended the meeting last night.

These operations will be repeated in the coming weeks and I will encourage the supervisors taking these operations to visit your area.

The Family of God

My husband and I recently came back from a week's holiday in Charmouth, Dorset where we had a wonderful time. One of the first things we do whenever we have unpacked is to go and find the local church, whether it is Methodist or Anglican makes no difference to us as we feel at home in both.

We came upon St Andrews Church in Charmouth 15 minutes away, the notice board stated the service started at 9.30am and it was a Communion Service. We attended the Sunday Morning Service where we received a warm welcome. After the service we were asked to stay for refreshments and a chat. Before we left we were invited to the joint evening service at the United Reform Church as it was going to be a Songs of Praise Evening. When we arrived at the Church again we were made to feel extremely welcome.

This got me thinking about the holidays that we have had over the last 46 years. We have gone to so many different

places and a variety of Churches. We have always been made most welcome where ever we have worshiped. It is so wonderful and a privilege to belong to The Family of God. It is like an extended family sharing the love of God. It makes me very proud to be a part of it and being surrounded by the love of Jesus and helping each other grow in our journey of faith.

God Bless
Irene Shawcroft

One-2One Personal Training

Based in the Nottinghamshire area
<http://www.danehuddart.com>

Will train at the home, outdoors
or arranged venues.

Call 07540 240 511
for details



Dane Huddart
Advanced Personal Trainer and Nutritionist
dane.huddart@gmail.com

St Mary's church to close!

St Mary's church to close! This was the headline we put out to try and encourage people to support our village church during the next few years. 'Surely the church will never close', some people have said to me. Of course our church will not close in the near future, but churches do come and go if the finance and support is not there.

We do of course welcome anyone from anywhere who wants to worship with us. But St Mary's is first of all for our village. So in November (Sunday the 4th at 3.00pm) we hold a special Remembering Service for all who have been bereaved, especially this past year. And it will not be long before we are circulating the village with Christmas service details.

One of the interesting things about Edwinstowe however is the number of visitors we have. Russians from their summer camp, people from Poland, Denmark, Japan, Australia, the States, film crews from Germany, so many different countries. Most of them come because of Robin Hood; but read their comments in our visitors' book and you will see how much they appreciate the present beauty and quiet, and the special atmosphere of our church. And that is there because people pray there and bring their joys and sorrows to God.

So please use your church; and a big thank you for all your love and practical support. It is really appreciated by many people locally and also the world over.

With my love and prayer
Tony Evans, vicar.



.....

Oddsocks present...

'Robin Hood'

'A festive spin on this classic folk tale. An energetic romp suitable for all the family with live music, lots of action and plenty of opportunity for audience participation!'

At Thoresby Riding Hall Theatre
Thursday 6th, Friday 7th, Saturday 8th December
7.30pm

Plus a matinee at 2.00pm on
Saturday 8th December

**Tickets are full £15, conc.
£13.50, child £9**



20th Anniversary of the Dukeries Tai Chi Society at Edwinstowe

The Senior Instructor, Bryan Frettsome and colleague Linda Howman, both of Edwinstowe, wish to record their thanks for the support of the other qualified instructors and the students alike for their continued participation into the realms of TAI CHI and its attendant arts over these many years; together with the Parish Council for the use of the well maintained Village Hall.

The Society who meet weekly at Edwinstowe Village Hall, adjacent to the Church, have adopted many members over these twenty years who have felt the benefit of a calming hand in working with the Tai Chi and Qigong system of exercise under qualified instruction much as recommended by an increasing number of Health Practitioners.

The Senior Instructor, Bryan and his colleagues continue to accept members from all adult age ranges who have a desire to participate as complete novices or semi-experienced candidates.

He explains that initially students begin with a process of learning a series of soft movements you see performed in the parks in China progressing towards a system of moving meditation. It takes the average student about six months to gain any real proficiency; even so, most students begin to improve posture, balance and breathing, bringing stress under control after only a few lessons.

The group meet in the Edwinstowe Village Hall on Mansfield Road which has excellent facilities and free parking to the rear, each Wednesday 8pm till 10pm. New members are always welcome.

Contact can be made through Bryan A. Frettsome on 01623 822827 or e-mail at bryan.frettsome@btinternet.com or snail mail to Forest Glade, 17, Robin Hood Ave, Edwinstowe, Mansfield Notts. NG21 9LG



SOUTH FOREST COMPLEX

ROBIN HOOD CROSSROADS, CLIPSTONE ROAD, EDWINSTOWE, NOTTS

TEL: 01623 823866 EMAIL: southforest@yahoo.co.uk

Future Events

Introducing chaplins pantos
the pantomime that comes to you will present:

Dick Whittington



Sat 8th Dec, 2pm - 4pm
in our marquee

£12.50 Adults - £10.50 O.A.P

£10.50 Children -
includes child's goody bag

Christmas Crafts Fayre - In aid of Help for Heros
Sun 25th Nov

Thoresby Colliery Band - Christmas Concert
Sun 9th Dec

BOOKINGS NOW BEING TAKEN IN OUR PINWOOD RESTAURANT FOR CHRISTMAS FAYRE - PLEASE SEE MENU FOR CHRISTMAS DAY & BOXING DAY

Christmas Fayre Daytime Menu Available 3rd-23rd December

Fan of Melon - Served with raspberry coulis
Bacon & Mushroom Melt - Served on a slice of garlic bread
Chef's Homemade Cream of Leek Soup - Served with crispy croutons

Roast Breast of Turkey & Roast Pork - Served with all the trimmings
Well Known South Forest Roast Beef - Served with Yorkshire pudding
Darne of Salmon - Served with watercress sauce
Mushroom Stroganoff (v) - Served with wild rice

Traditional Homemade Trifle - Served with fresh cream
Lemon Cheesecake - Served with sweet lemon drizzle
Luxury Individual Christmas Pudding - Served with brandy sauce

Freshly Brewed Tea or Coffee - Served with luxury chocolate mints

£16.95 per person

Christmas Fayre Evening Menu

Available through December on Fri 7th . Sat 8th . Sun 9th . Fri 14th . Sat 15th
Sun 16th . Wed 19th . Thur 20th/Fri 21st . Sat 22nd . Sun 23rd

Strawberry & Pineapple Platter - Served with champagne sorbet
Bacon & Cheese Potato Skins - Served with BBQ & Sour cream dips
Breaded Mushrooms - Served with garlic mayonnaise
Chef's Homemade Cream of Mushroom Soup - Served with crispy croutons

Roast Breast of Turkey & Roast Pork - Served with all the trimmings
Medallions of Beef - Served with either Madeira sauce or creamy pepper sauce
Plaice of prawns - Enveloped around luxury King prawns and served with a light hollandaise sauce
Mushroom & Courgette Carbonara (v) - In a light cheese sauce served with tagliatelle

Luxury Individual Christmas Pudding - Served with brandy sauce
Strawberry Shortcake - Homemade shortcake biscuits with fresh strawberries & fresh whipped cream
Peach Melba - Half peaches in a peach sauce with luxury vanilla ice cream & fresh cream

Restaurant - £19.95 per person
Function Room with Disco - £22.50 per person

KEY BUILDING SUPPLIES LTD

ROAD C, BOUGHTON INDUSTRIAL ESTATE, BOUGHTON,
NEWARK, NOTTS, NG22 9LD. Tel: 01623 861735

email: keybuildingsupplies@hotmail.co.uk • www.keybuildingsupplies.com

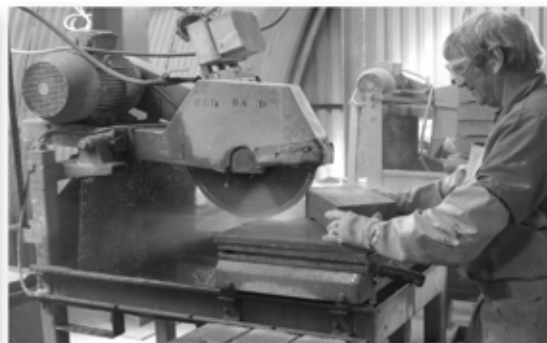


FOR ALL YOUR BUILDING AND LANDSCAPING NEEDS...

***MASSIVE STOCKS OF HOUSE
COAL, SMOKELESS FUEL,
DRY SPLIT LOGS - BULK BAGS
& NETS, GAS & ROCKSALT***

**STOCKISTS OF BLOCKS, BRICKS,
CEMENT, AGGREGATES, PLASTERS &
BOARDS, TIMBER, TILES & FENCING,
ETC. VARIED RANGE OF DECORATIVE
MATERIALS INC GRAVELS AND**

**PAVING. CRANE AND TIPPER LORRIES AVAILABLE
FOR DELIVERIES. EXTENSIVE RANGE OF PRODUCTS
IN OUR ON SITE SHOP!**



Brick cutting service, also brick slips & arches: www.keybrickcutting.com



School uniforms more unaffordable than ever

As the recession has deepened, schools are adding to stressed parents' financial troubles by ignoring government guidance on keeping down the cost of school uniform. Too many schools still insist that uniform items can only be bought from an exclusive supplier, instead of making sure parents can take advantage of cheaper deals widely available from supermarkets and high street chains. Some even compel parents to buy items from the school itself – often at twice the price.

As thousands of young people have returned to school this September, more and more families are struggling with the high costs of school uniforms and kit. In such economically pressured times, and with the numbers of academies increasing (many with expensive new uniforms) Ollerton & District CAB is calling on schools in the area to help families by adopting sensible, low-cost policies on uniform which comply with Government guidance on affordability.

The Citizens Advice Adding Up campaign shows how schools can help families by following five recession-busting tips:

1. Make sure uniforms are available from a range of outlets, and not one sole supplier
2. Offer sew-on badges that can be put on plain clothing
3. Encourage recycling or swap schemes
4. Go for colours that can be carried over from one school to the next
5. Appoint a governor to keep a check on the affordability of parental expenditure.

Information and Advice Available

General Advice drop-in Service at Ollerton & District CAB, Forest Court, New Ollerton Nottinghamshire, NG22 9PL

Including Specialist Advice in Welfare Benefits and Money Advice

Mon/Wed/Fri 9.30 am – 2.30 pm

Telephone Advice: North Notts Help Line: Monday to Friday 10.00am – 2.00pm

From landlines: (0844) 856 3411

From mobiles: (0300) 456 8369

Outreach Services – Bilsthorpe, Clipstone, Blidworth and Rainworth

www.adviceguide.org.uk

Catherine was nominated as Volunteer of the Year 2012, for all the dedicated work that she has carried out not only in and around Edwinstowe or Ollerton and Thoresby Market and the Stables. She also travels from Ollerton to Mansfield to cover the Palace Theatre productions 2/5 times a week.

Throughout a year she can cover over 1,000 hours a year Public Duty. Catherine also has to ensure that the members of Thoresby Division are all kept up to date with the skills required within St John so that they are also allowed to carry public duties.

Any funding from these duties are used to keep the Headquarters in full repair and Catherine and her members do not claim any expenses for their travelling etc.

The Headquarters are on Forest Corner and this Division is always very willing to welcome new members on a Tuesday evening.



THERE'S PEACE AND HOLY QUIET THERE

On Remembrance Sunday, we pay tribute to those who made the supreme sacrifice, and pray they have attained 'peace and holy quiet'

Fourteen young men from Edwinstowe gave their lives in WW2; some enlisted straight from school or college, others had worked for a few years.

On Remembrance Sunday, we listen with pride as the names of all those who lost their lives are read out at the War Memorial.

Gerald Askew - Thoresby Colliery surface worker and only son, Gerald enlisted in the Royal Welsh Fusiliers. On Sundays and holidays, he sold sweets and drinks on a Forest Corner stall.

Jack Foy - The only child of the Colliery Manager's gardener, Jack worked in the Pit Offices before enlisting as RAF aircrew.

John Greenfield - The only son of Farmer Greenfield of Villa Real Farm, John was an RAF volunteer and aircrew officer. During potato-picking week in October, John rode a horse pulling a plough and cart along rows of potatoes. As potatoes were unearthed, we picked them up and threw them into the cart.

Eric Hoe - Leading Aircraftman Eric was killed-in-action while serving with the Queen's Royal Regiment and is buried in a war cemetery in Marseilles, France.

Jack Jones - The only son of Thoresby Colliery Under-manager, Jack suffered with pneumonic fever in his youth. He passed fit to join the army in India, but suffered a recurrence of this disease and died. Eric, Jack and I spent many hours walking along the River Maun and in Sherwood Forest, stopping to swim in the river or throw a cricket ball. Eric played in Edwinstowe Cricket Club's Second XI and always carried a cricket ball.

Jack Lacey - Jack worked for Farmer Greenfield who missed his youthful vigour and strength after he enlisted. Jack's family lived in a cottage, now dismantled, along a track opposite Sherwood Grange Nursing Home.

Ernest Reddish - Ernest, a qualified teacher, worked at a Worksop school before training as an RAF Navigator.

Charlie Reedman - The only son of a railway signalman, Charlie enlisted in the Royal Navy. He had worked as an apprentice shoemaker for Jack Lacey, the High Street Cobbler.

Ralph Richardson - Ralph was the son of St Mary's Churchwarden. Before he enlisted into the RAF, was a chorister and crucifer - leading the choir from the belfry to choir stalls at the beginning of Sunday services and to the War Memorial on Remembrance Sunday.

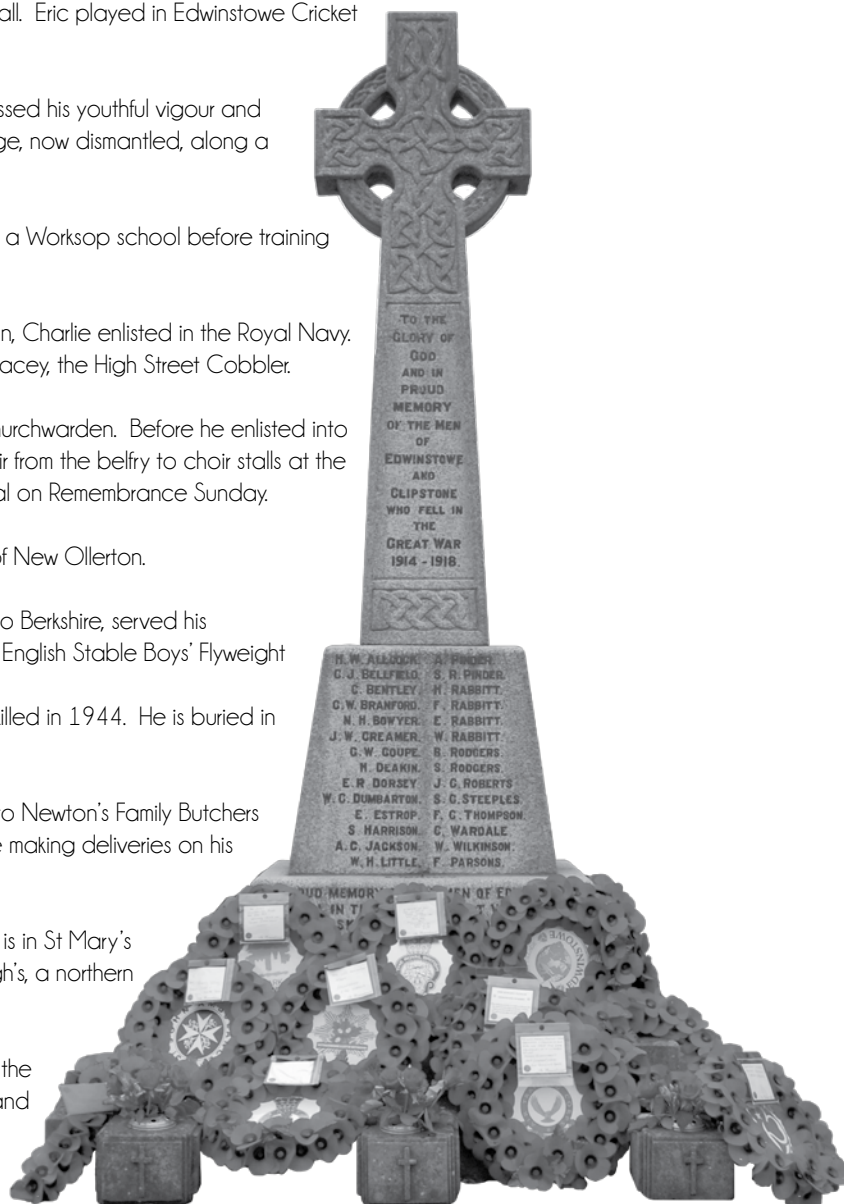
Frank Sargent - Frank worked for Henry Waby, printer of New Ollerton.

Harold Sperink - Harold was a stable-lad; he moved to Berkshire, served his apprenticeship and qualified as a jockey. He was the English Stable Boys' Flyweight Boxing Champion. Harold served with Queen's Royal Regiment and was killed in 1944. He is buried in the Gradara War Cemetery, Italy.

Charlie Winter - Only child, Charlie was apprenticed to Newton's Family Butchers in the High Street. He was a familiar and likeable figure making deliveries on his purpose-built bicycle.

Oswald Woodhead - A Flight Sergeant, whose grave is in St Mary's churchyard, Ossie was a travelling salesman with Brough's, a northern grocery firm with a store in the High Street.

Charles Wright - Corporal Charles Wright, served with the Worcestershire Regiment, was killed in action in 1940 and is commemorated in the Dunkirk Memorial, Northern France.



Sherwood Forest Arts and Craft Centre

Clare Hawley Jewellery

The Sherwood Forest Arts and Craft Centre continues to evolve as its dynamic changes to accommodate our newest tenant Clare Hawley Jewellery.

Clare specializes in hand made jewellery using the time honed skills of the traditional silversmith. Her techniques and artistry is on display in her studio where you can see Clare actually work on pieces of jewellery, as well as admire her finished work. Clare enjoys sharing her enthusiasm and knowledge with others and offers personalised, individual tuition to those interested in learning more.

Clare's studio is a welcome addition to our centre, adding another point of interest for visitors. The Craft centre website give information about all the studios and plenty more.

www.sherwoodcraft.co.uk

The Evergreen Club

The Evergreen club is Located at the Abbey Road Community Centre.

Events in 2012 have included outings, on 24 July an outing to Buxton and Masson. 21 August an outing to the popular Yorkshire seaside resort of Scarborough. Our next planned meeting is on the 25 September to Melton Mowbray. We held an afternoon lunch, on the 25 August of either fish or pie, with chips and peas. This was enjoyed by 27 members.

Members have attended at least eighty evening events over the past year and travel has been free to all these events.

A Day out to Scarborough Evergreen Club

The weather on the day of the Evergreen Club's outing to the North Yorkshire seaside town of Scarborough was blissful. In a summer of record rainfall, for us the rain held off until our return journey in the coach.

The members of our party had a wonderful day out on the diverse attractions and would warmly recommend them.

Several of our party went on the Funicular Railway which is located on the South Cliff. The Railway is operated by a cable which is attached to the car's, they are counter-balanced, as one goes up the other one comes down.

Some of our members enjoyed a cliff top stroll, which gave them a wide view of the bay and the town.

Others were reminded of their childhood when they witnessed children taking donkey rides.

The rest of the members enjoyed a boat trip around the bay. The whole party took advantage of sea-front fish and chip shops and dining restaurants.

We all had a wonderful day out and we would all warmly recommend a visit to Scarborough with its diverse attractions.

D.W.



Natural Hair and Beauty

Welcome to Natural Hair and Beauty, Love Lingerie and the Ivory Suite all at Sherwood House, a beautiful converted barn on Ollerton Road, Edwinstowe. Pamper yourself with a new hairstyle or facial using natural products sourced locally. From hair extensions to nail extensions, the professional experienced team are always available for a consultation.

Love Lingerie has a beautiful and diverse selection including curvy, nursing, bridal, mastectomy etc. including mastectomy swimwear. There is a professional fitting service by the friendly team. There is also wheelchair access to all the downstairs facilities. Upstairs offers bridal gowns and evening wear with all the accessories in a stylish boutique room.

Sherwood House offers a new shopping experience, well worth a visit and a supportive of Totally Locally.

Sherwood House, Ollerton, Edwinstowe, NG21 9QE
01623 825888 - 01623 822666

TRIBUTES PAID TO LES WARD

Since the last issue of Edwinstowe Village News many villagers will have heard of the death aged 69, of our well known former County Councillor Les Ward, after a long illness.

Les was the County Councillor for the Rufford Division, which includes Edwinstowe, since 2009. He had also previously served as an Edwinstowe Parish Councillor and had been a member of the Police Authority. He was a trustee of the Ollerton and District Citizen's advice Bureau and director and trustee of the Edwinstowe Arts, Heritage and Festival Organisation.

Les was a former police officer, until he retired following an injury sustained on duty.

Amongst the tributes paid to Les, the leader of Nottinghamshire County Council, Kay Cutts, praised his work for the local community and said he was an "excellent County Councillor." He leaves behind his wife, Sandi, four children and nineteen grandchildren.



PARISH COUNCIL TAKE OWNERSHIP OF THE VILLAGE HALL

Ownership of Edwinstowe's Village Hall which includes the Parish Council office was formally handed over to the Parish Council by the previous owner, Newark and Sherwood District Council.

The deeds were presented to the Chair of the Parish Council, Councillor Celia Brooks, by Cabinet Member, Councillor Richard Jackson, representing the District Council.

Celia Brooks said: "We are delighted to be taking over the ownership of the Village Hall. It means we can safeguard the future of this important community asset, which is also one of Edwinstowe's important historic buildings.

We will continue to work closely with Pat Bamford and the Village Hall Management Committee who do such a wonderful job in managing and looking after the Village Hall, which is very well used by a whole range of community groups."



Friars Park Update

We reported in the last issue of Edwinstowe Village News that the Parish Council would be taking over the park next to the Friars Park development on the ex Rufford school site.

This will happen sometime soon but the legal formalities are taking longer than expected. In the meantime, Barratt Homes who are still responsible for maintaining the park until the handover takes place, have been negligent in their responsibilities, when it comes to such things as emptying the litter bins and installing dog waste bins. The sooner the handover takes place, the better because our Parish Council staff will make a much better job of looking after the park.

In the meantime the Parish Council has decided to officially name the park, "Edwinstowe Jubilee Park" once the takeover is complete. The adjacent housing development will of course keep its name "Friars Park" as that name was given to it by Barratts.

SPEEDING AND MOBILE PHONE USE AT THE WHEEL- IT'S DANGEROUS!



It's stating the obvious to say that speeding through built up areas like Edwinstowe is dangerous and so is using a hand held mobile phone whilst driving.

Despite the measures which have been taken, speeding is still a big concern, particularly on all the roads in and out of the village. There has been another accident on Mill Lane for example. It's also amazing how many people can be spotted every day driving through the village holding a phone to their ear, usually in their right hand (how do they change gear without both hands off the wheel?).

Sooner or later there will be an accident in the village due to this dangerous activity, which studies have shown to be every bit as dangerous as drink driving.

Your local Councillors are going to ask if the police can have a crack-down on both the problems.

P&G LOCK FAMILY BUTCHERS

WEST LANE, EDWINSTOWE
01623 822200

**PRIME BRITISH BEEF,
PORK & LAMB,
YORKSHIRE CHICKENS,
SELECTION OF HOME
MADE SAUSAGES,
FRESHLY COOKED HAM,
BEEF & TURKEY**



**5 Star Food Premises
Hygiene Rating**

**ORDERS NOW BEING TAKEN
FOR YOUR CHRISTMAS FAYRE
SELECTION OF GAME AVAILABLE**

History Group

Also to let you know that the art history group has started up in Ococo Cafe every other Thursday from 7.00 until 9.00pm.

All are welcome to come along and find out more about art history, demystifying contemporary art and enjoying great coffee and chat but let us know if you are coming.

Telephone Caroline on 01623 825529 or
Hughestock@aol.com for details.

Cheers mi dear, Caroline

DANNY DAVIS

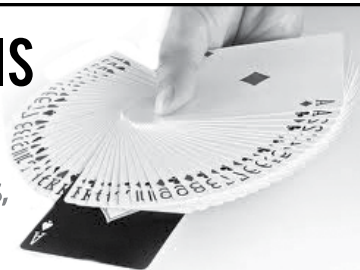
*CLOSE UP MAGICIAN
& MENTALIST*

**BIRTHDAYS, WEDDINGS,
PRIVATE PARTIES
& CORPORATE EVENTS**

And magic lessons available,
teaching you all the mysteries
and secrets of magic

FULL EQUITY MEMBER
0781 82 83 907

You never know you could be the next Dynamo



LANGMEAD

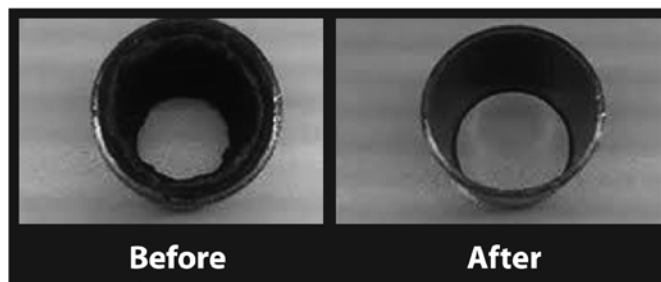
HEATING

Advice Design Installation Maintenance

Langmead Heating is a local business that specialises in gas central heating. We supply, install, service and repair a wide variety of boilers and heating systems (not just combination boilers). We have done a vast amount of work locally, with a vast amount of satisfied customers. We have experience in fault finding on heating systems where others fail. We are fully insured and fully qualified with the philosophy of 'do it how you'd like it in your own home'. Langmead Heating is a GAS SAFE REGISTERED company and the number is 513290 if you would like to research it for peace of mind.

Due to the rising gas prices, it is important that you make your central heating system as efficient as possible. Upgrading your boiler and radiators isn't the only way to do this. Power flushing is a way of achieving great results on older systems. It works by using strong chemicals to break up the sludge inside your radiators and then a machine to extract the debris. Here are some of the advantages:

- **Makes systems up to 50% more efficient**
- **Prolongs the life of boilers, pumps and valves**
- **Makes radiators warmer**
- **Boilers don't have to work as hard to achieve a warm house**
- **Takes 1 day to do**
- **Minimal mess**
- **Quieter heating systems**
- **Works with a new installation onto older systems**



Any new boiler installed by Langmead Heating before December 31st 2012 will receive a free power flush (usually from £250).

The following is a brief insight into the work Langmead Heating carries out:
Boilers, fires, cookers, unvented cylinders, radiators, fault finding, full heating systems, heating upgrades, power flushing (from £250), servicing, landlord safety checks, all general plumbing and drainage.



Liam Tebbett
2 Old Station Yard, Occupation Lane,
Edwinstowe, Mansfield, Notts
07814915978

EDWINSTOWE VILLAGE NEWS EDITORIAL TEAM

Cllr Josie Cocking, Cllr John Peck, Jill Sansom, Robin Woodhead, Alice Dunn

FEEDBACK

Let us know what you think of the Village Magazine

If you have any feedback on the Village Magazine, please email your comments to **edwinstowe.pc@btconnect.com** or drop this form in at the Village Hall.

.....

.....

.....

.....

.....

.....

.....

.....

If you would like to submit an article or an advert for the next issue email us at: **edwinstowe.pc@btconnect.com** for more information.



COUNTY COUNCIL BY-ELECTION RESULT

It seems a long time ago but just in case anyone didn't catch the County Council by-election result held on 20th September, the result was as follows:



Therefore Edwinstowe's John Peck was elected as the new County Councillor for the Rufford Division, which covers Edwinstowe, Clipstone, Bilsthorpe, Kings Clipstone and Rufford villages. John Peck said after the election result was announced, "I'm obviously delighted with the result and looking forward to the challenge."

There is a lot to be done to promote jobs and economic growth in the area, but also to tackle many of the issues such as the state of some of the pavements, potholes in the roads.

There are big issues to tackle in the other villages, but as far as Edwinstowe is concerned, I want to make sure the village gets some genuine benefit from the new visitor centre and will campaign for improvements to Ollerton roundabout and the Robin Hood line to be extended to Edwinstowe. I will be able to work with the Parish Council and my fellow District Councillor, Celia Brooks so we are all pulling in the same direction for Edwinstowe."

The by-election was called following the sad death of the sitting Councillor, Les Ward, who many Edwinstowe people will have known.



ROYAL OAK

Bookings Now Been Taken

Christmas Fayre / & Christmas Day

30th November to 6th January

25th December

Christmas Fayre 30/11/12 to 6/1/13

Christmas Day 25/12/12

Starters

Melon Balls • Prawn Cocktail • Tomato and Basil Soup • Pate and Melba Soup

Main

Turkey • Ham • Beef • Broccoli Brie Tart

Deserts

Christmas Pudding with Brandy Sauce • Profiteroles • Cheesecake
Warm Fudge Cake With Either Cream Or Ice Cream • Mince Pies • Cheese Board

Veg and Extras

Creamed Mash • Buttered Brussels • Pigs in Blankets • Stuffing Balls • Roast Potatoes
Cauliflower Cheese • Carrots • Peas • Yorkshire Puddings • Broccoli
Green Beans • Leeks in White Sauce

Starters

Melon Balls • Prawn Cocktail • Tomato and Basil Soup • Pate and Melba Soup

Main

Turkey • Lamb • Ham • Beef • Broccoli Brie Tart

Deserts

Christmas Pudding with Brandy Sauce • Profiteroles • Cheesecake
Warm Fudge Cake With Either Cream Or Ice Cream

Veg and Extras

Creamed Mash • Buttered Brussels • Pigs in Blankets • Stuffing Balls • Roast Potatoes
Cauliflower Cheese • Carrots • Peas • Yorkshire Puddings • Broccoli
Green Beans • Leeks in White Sauce

£15 per head
£6 a child

High Street, Edwinstowe, Notts, NG21 9QP Tel:01623 825775 Mob:07788497782

£25 per head
£6 a child

Winter Wonderland - Photo taken by David Goff





WOODHEAD

PERFECT CHOICE FUNERALS



Independent Family Funeral
Service

Available 24 hours a day

Perfect Choice Funeral Plans
(bespoke, prepaid and with
finance options available)



Serving Edwinstowe and the
surrounding villages with our
personalised service for over
65 years

Introducing our Perfect Choice Funeral Plans

Thinking about your own funeral is never an easy thing to do. However it can be a great comfort to know that you've taken care of the arrangements, which will provide financial and practical help for your loved ones at an already distressing time.

Anyone can arrange a plan, with no upper age limits, no medical and no health questions to answer. Once you've taken out a plan, all of the costs of our services will be covered when they are needed. Fully protected by the Financial Services Compensation Scheme, the plan also covers disbursements to third parties including crematorium, minister and doctors' fees.

Please call to arrange a **FREE**,
no obligation quote or home visit

We will tailor all elements to suit you and your budget



Visit us at www.woodheadfunerals.co.uk

Funeral Director: Melanie Bainbridge
Telephone (24Hrs): 01623 871101



For all postal enquiries - Woodhead Perfect Choice Funerals, 45 High Street, Edwinstowe, Nottinghamshire, NG21 9QR

Woodhead Perfect Choice Funerals is a trading name of Robert Woodhead Ltd Registered Company Number 1360957